

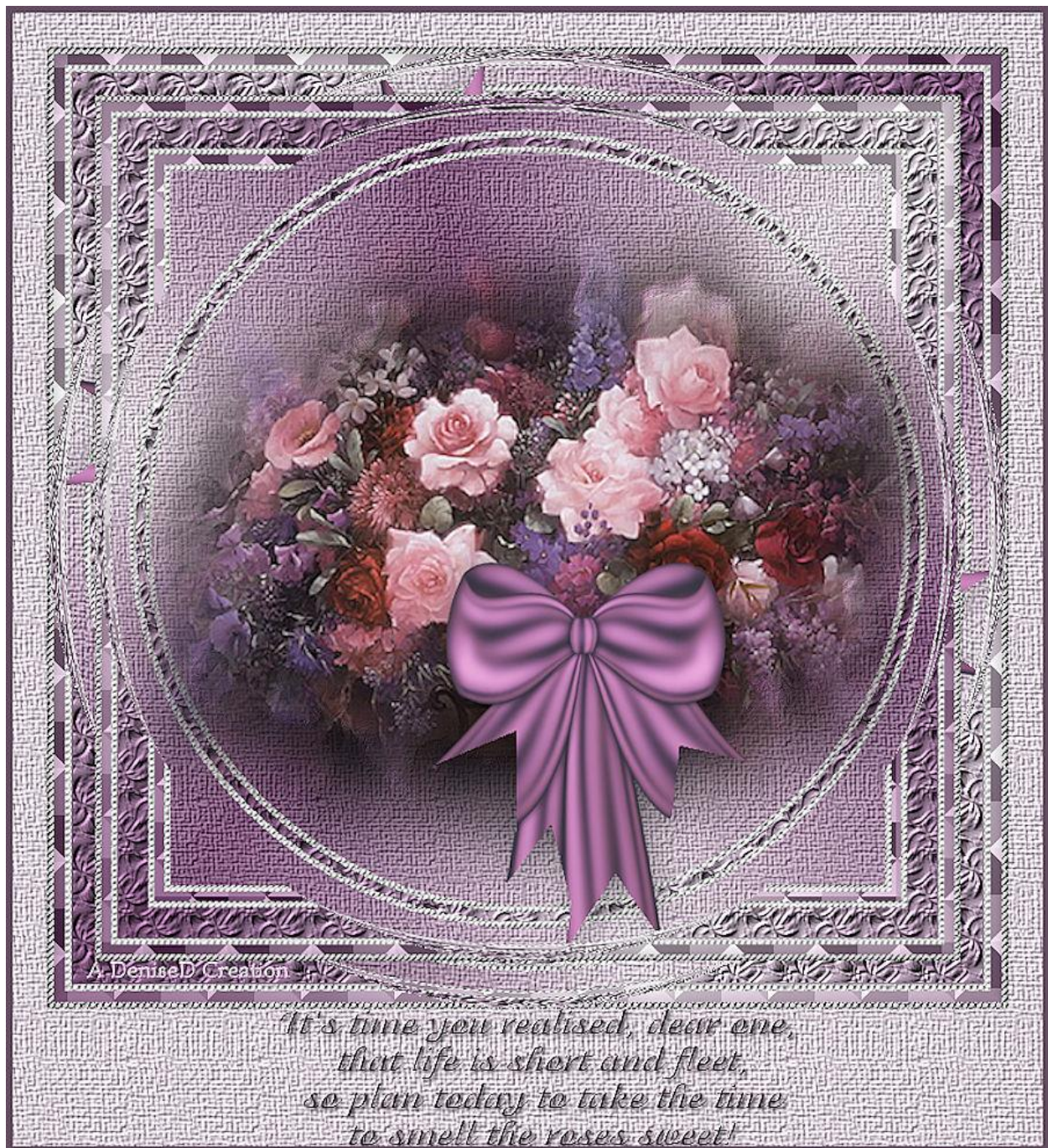
This tutorial is written by Denise D. on 5th December, 2013  
from my own ideas.

Any resemblance to other tutorials is co-incidental and unintentional.  
You may share my tutorials with other groups. All I ask is that you advise  
me  
and credit for the tutorial is given to me and linked to

<http://escapingtopsp2.altervista.org/Home/homeb.html>

Please do not upload any of my completed Tutorial images onto sites such  
as  
Fotki, Pinterest, Photobucket or similar  
as there is no provision on sites to give credit to the designer

## THE SWEET SMELL OF ROSES



<http://escapingtopsp2.altervista.org/TheSweetSmellofRoses/TheSweetSmellofRoses2.htm>



Thank you Inge-Lore for this German translation



Thank you for this Spanish translation



**Click Box to download supplies**

**Images:**

LlizMist~Floral018.psp

You can join this group at:

<https://groups.yahoo.com/neo/groups/Kiwi-madeByLliz/info>

D.D.bow2

**Selection:**

D.D.The.sweet .smell

**Texture:**

133

**Pattern:**

silverbeads.lt

**Signature.psp**

**Font:**

Adorable MLSSN.TTF

**Plugins:**

MuRa's Seamless

Graphics Plus

Filters Unlimited 2.0

Found here:

<http://www.chezviolette17.com/02filtres/Filtres.htm>

**Notes:**

This Tutorial was originally created in PSP X5 and now updated in

PSP2020..... other versions may need adjustment

Some of the graphics may be from Free to Use sites or Share Groups.

If you are the creator of one of these please let me know so that



appropriate credit can be given.  
No infringement of copyright is intended or intentional.  
Before opening PSP, download plugins and install  
Place Pattern in PSP Pattern Folder  
Place Texture in PSP Texture Folder  
Place Selection in PSP Selection Folder  
Open graphics in PSP, duplicate (Shift D) and close the original.

**View/Rulers** (I always have my rulers active)

***Some helpful information:***

*You can change the blend mode, opacity and drop shadow, as well as  
colourise the materials,  
according to the tubes/colours you are using.*

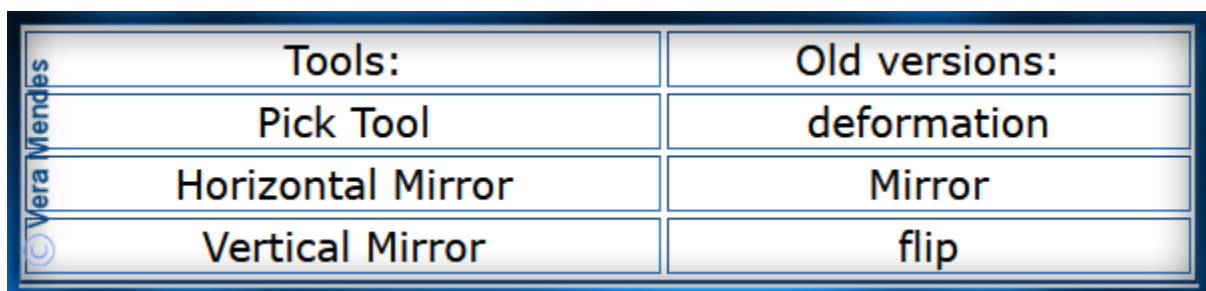
*When applying the Resize with the All Layers option checked, this will be  
informed in the tutorial,  
otherwise, apply the resize with this option unchecked.*

*Remember always to save your work.*

*Whenever you reduce an image, apply Adjust/Sharpness/Sharpen, to  
maintain the sharpness of the image.*

*Some tools or features have other names in earlier versions of the PSP.*

*<http://escapingtopsp2.altervista.org/Home/homeb.html>*



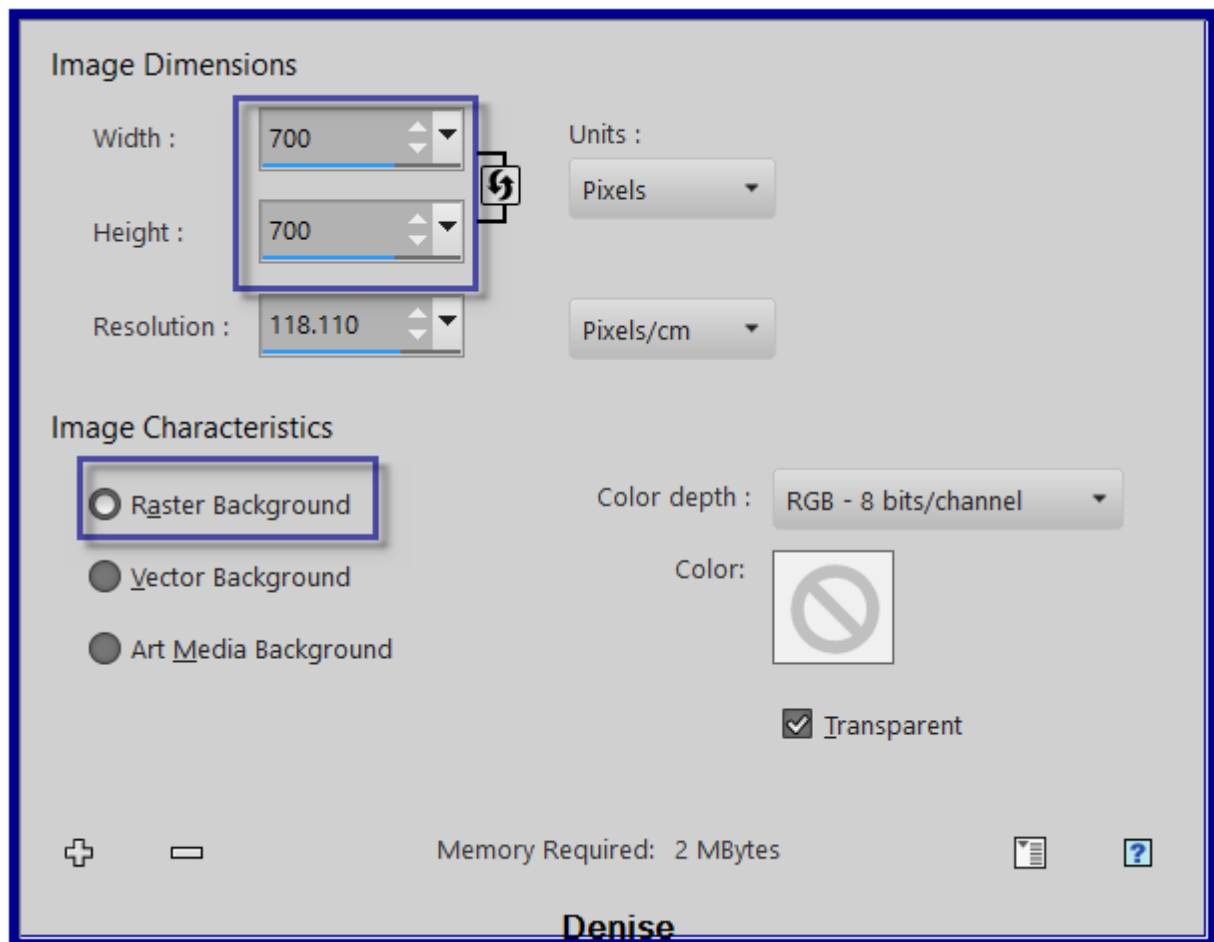
Tools:	Old versions:
Pick Tool	deformation
Horizontal Mirror	Mirror
Vertical Mirror	flip

**The settings remain the same throughout this Tutorial unless  
otherwise stated.**

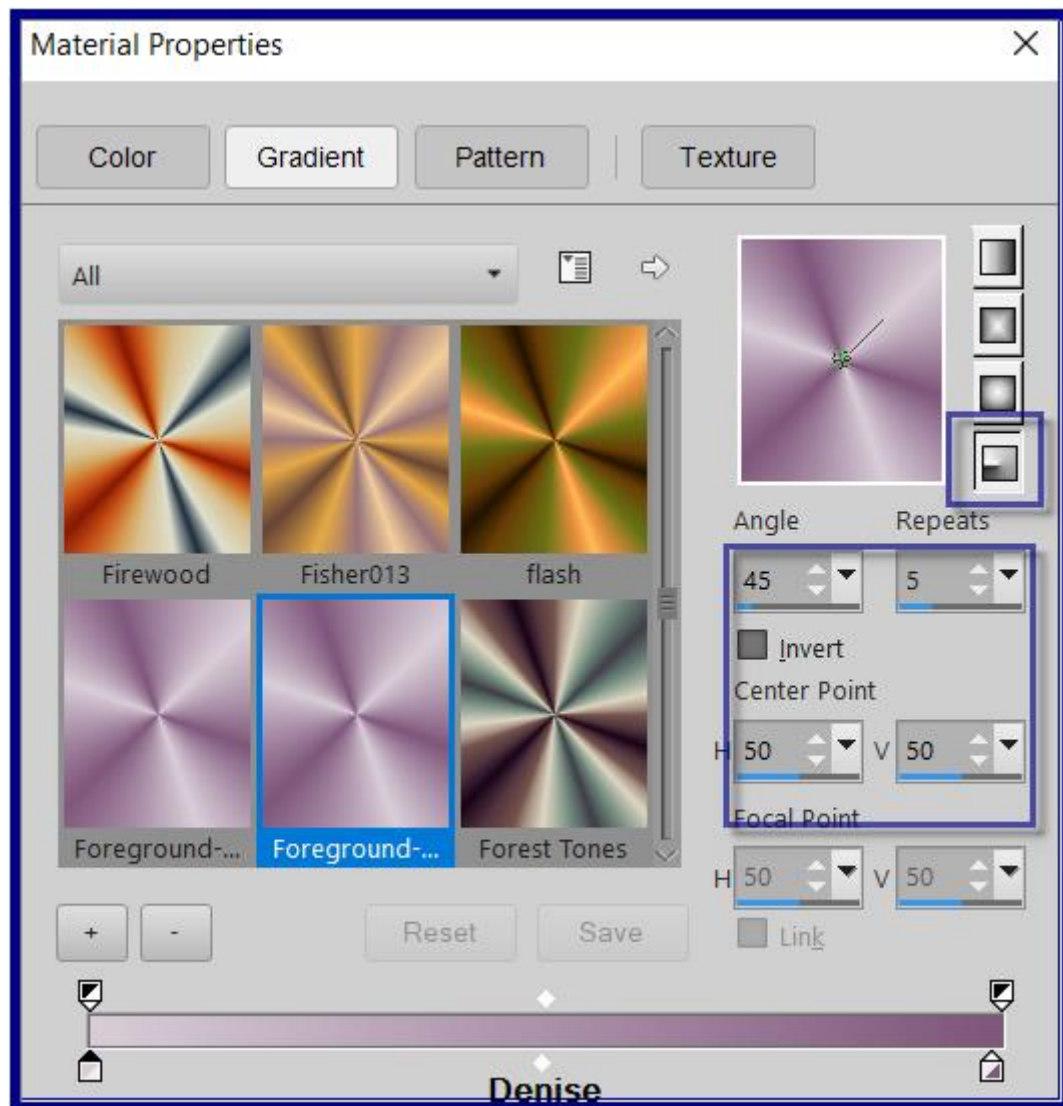
Set your Foreground colour to #d9ced8  
Set your Background colour to #80577d

**Step One:**

File/New/New Image 800 pixels x 600 pixels as follows:

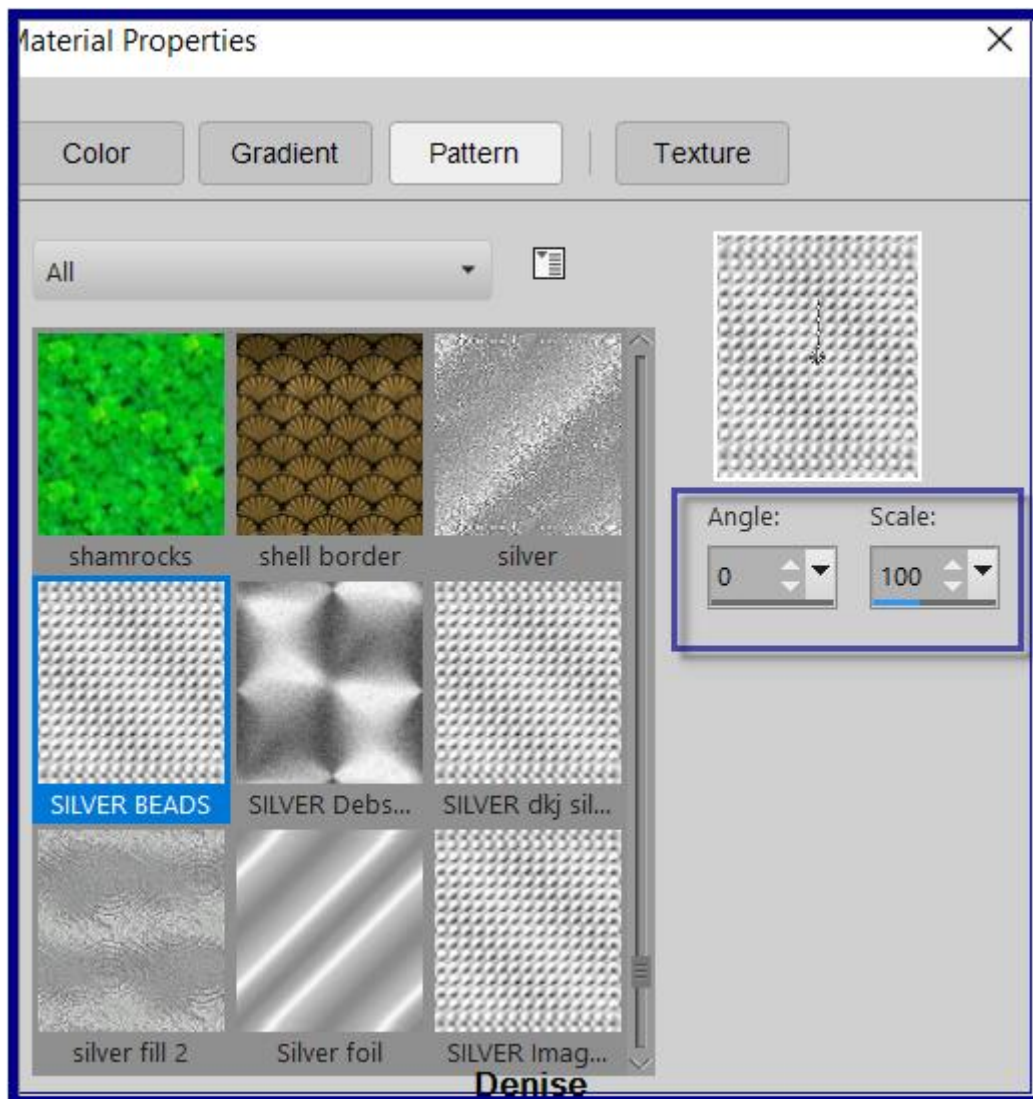


Change Foreground Colour to Foreground/Background/Linear Gradient as follows:

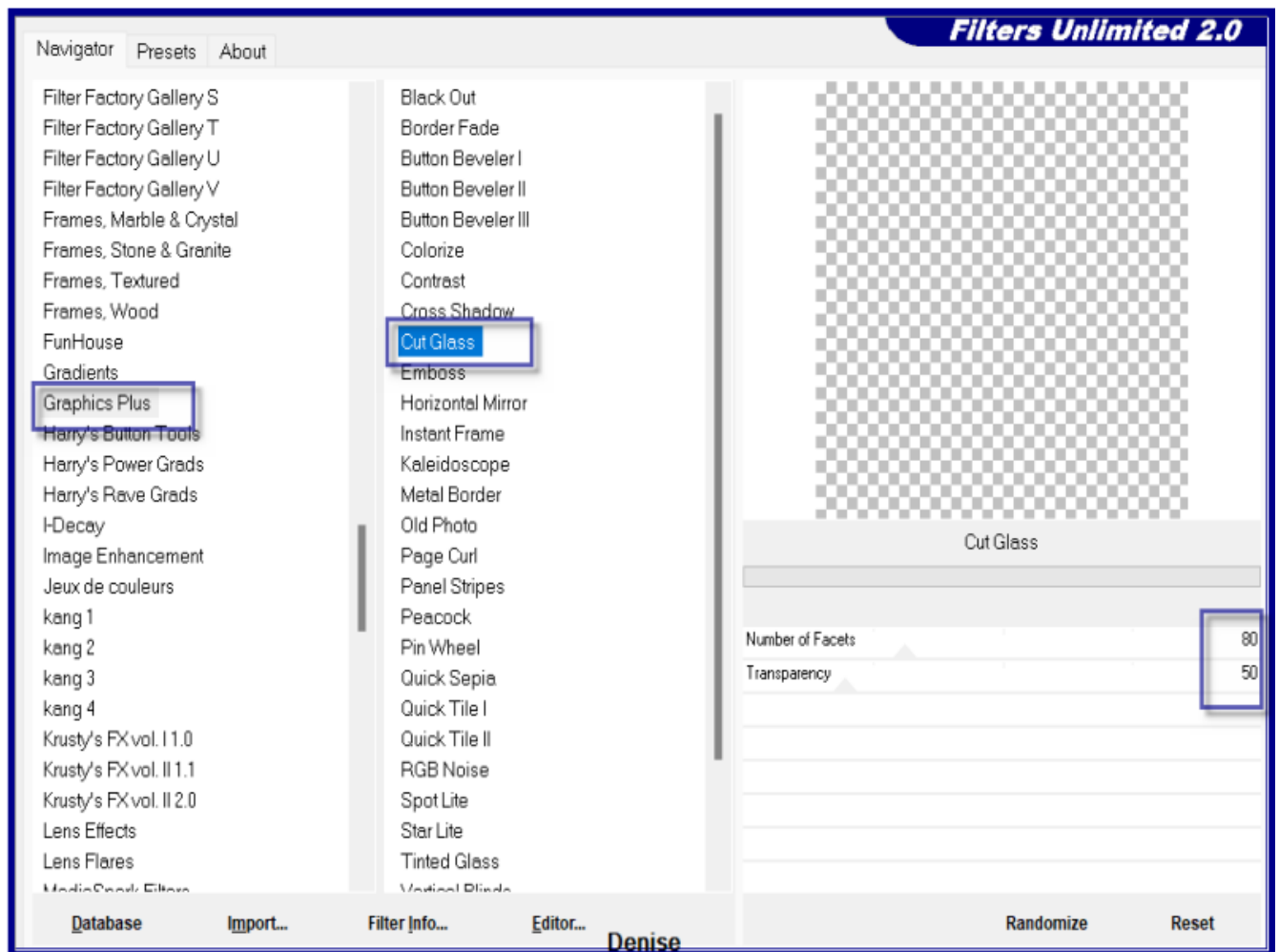


### Step Two:

Change Background Colour to Pattern silverbeads It.jpg as follows;



Flood fill with Background Pattern  
 Selections/Select All  
 Selections/Modify/Contract 5 pixels  
 Effects/Plugins/Filters Unlimited 2.0/Graphics Plus/Cut Glass as follows:

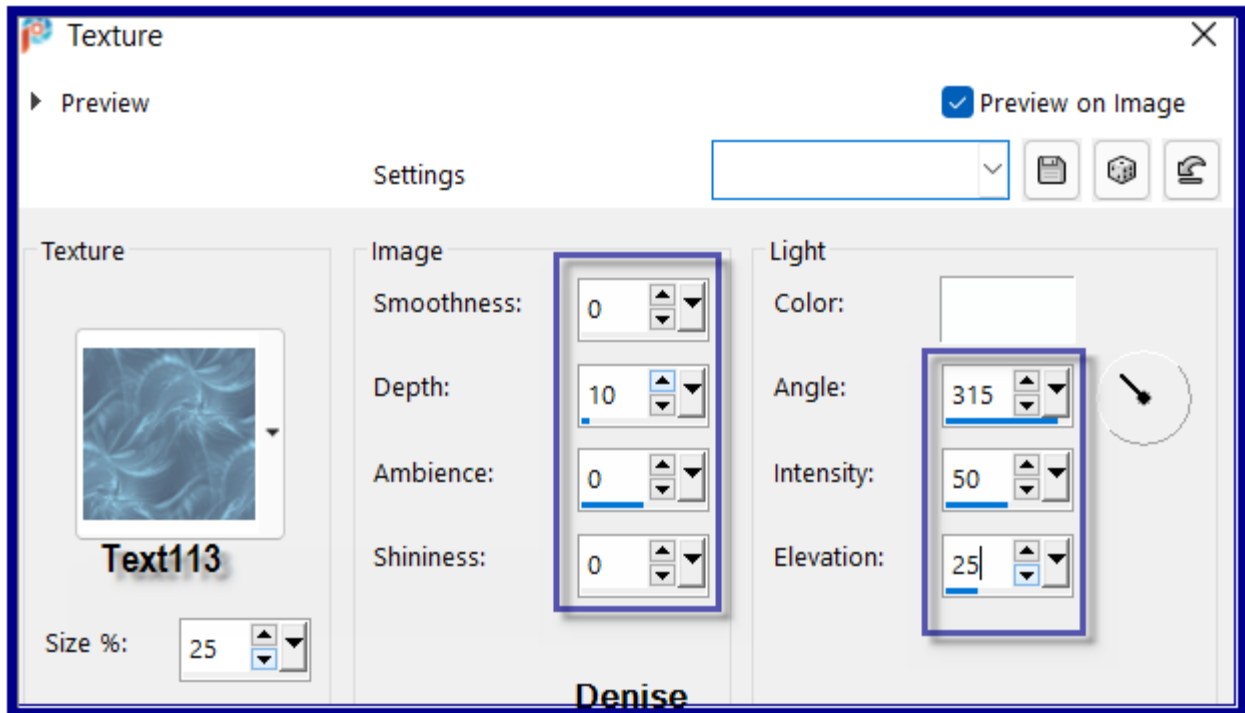


Selections/Modify/Contract 8 pixels  
Edit/Clear

### Step Three:

Flood fill with Foreground Gradient  
Effects/Texture Effects/Texture/113.psp as follows:





Selections/Modify/Contract 25 pixels  
Edit/Clear

Flood fill with Background Pattern  
Selections/Modify/Contract 5 pixels  
Edit/Clear

Flood fill with Gradient

Effects/Plugins/Filters Unlimited 2.0/Graphics Plus/Cut Glass

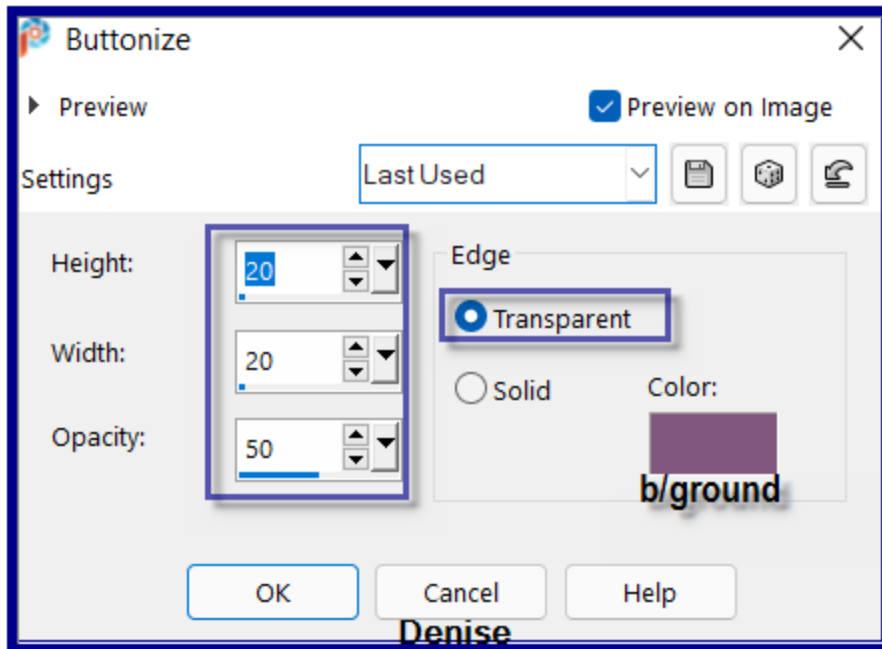
Selections/Modify/Contract 8 pixels  
Edit/Clear

Selections/Modify/Contract 5 pixels  
Edit/Clear

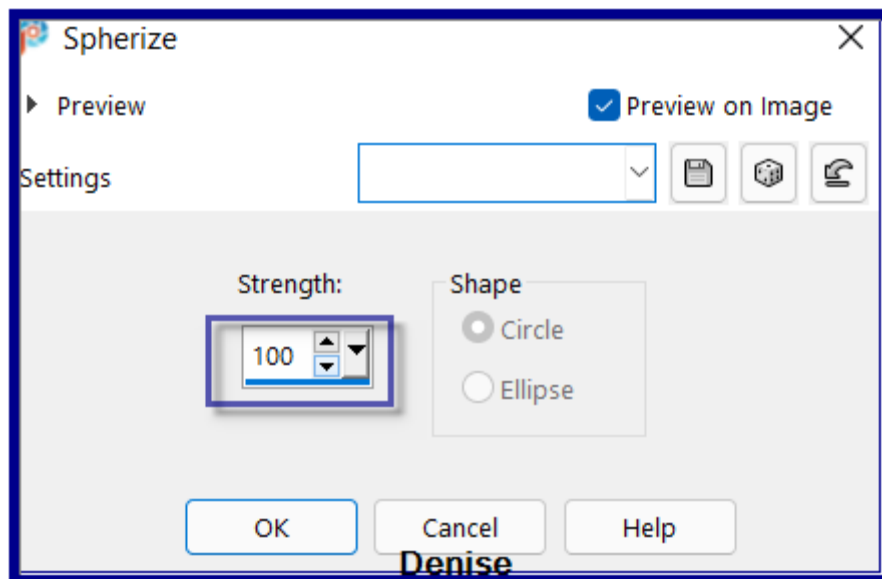
Selections/Select None

#### **Step Four:**

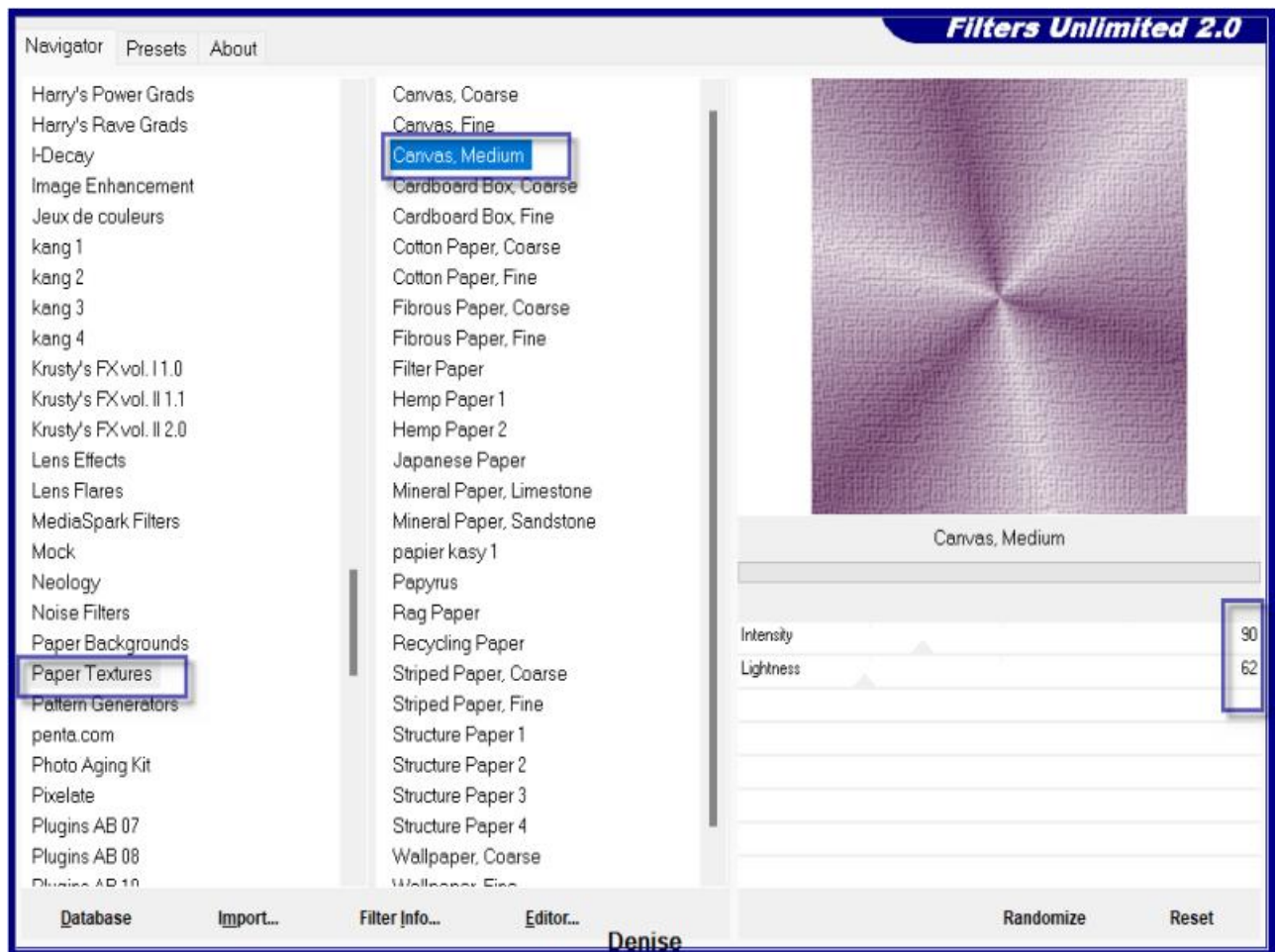
Effects/3D Effects/Buttonize as follows:



Effects/Geometric Effects/Spherize as follows:



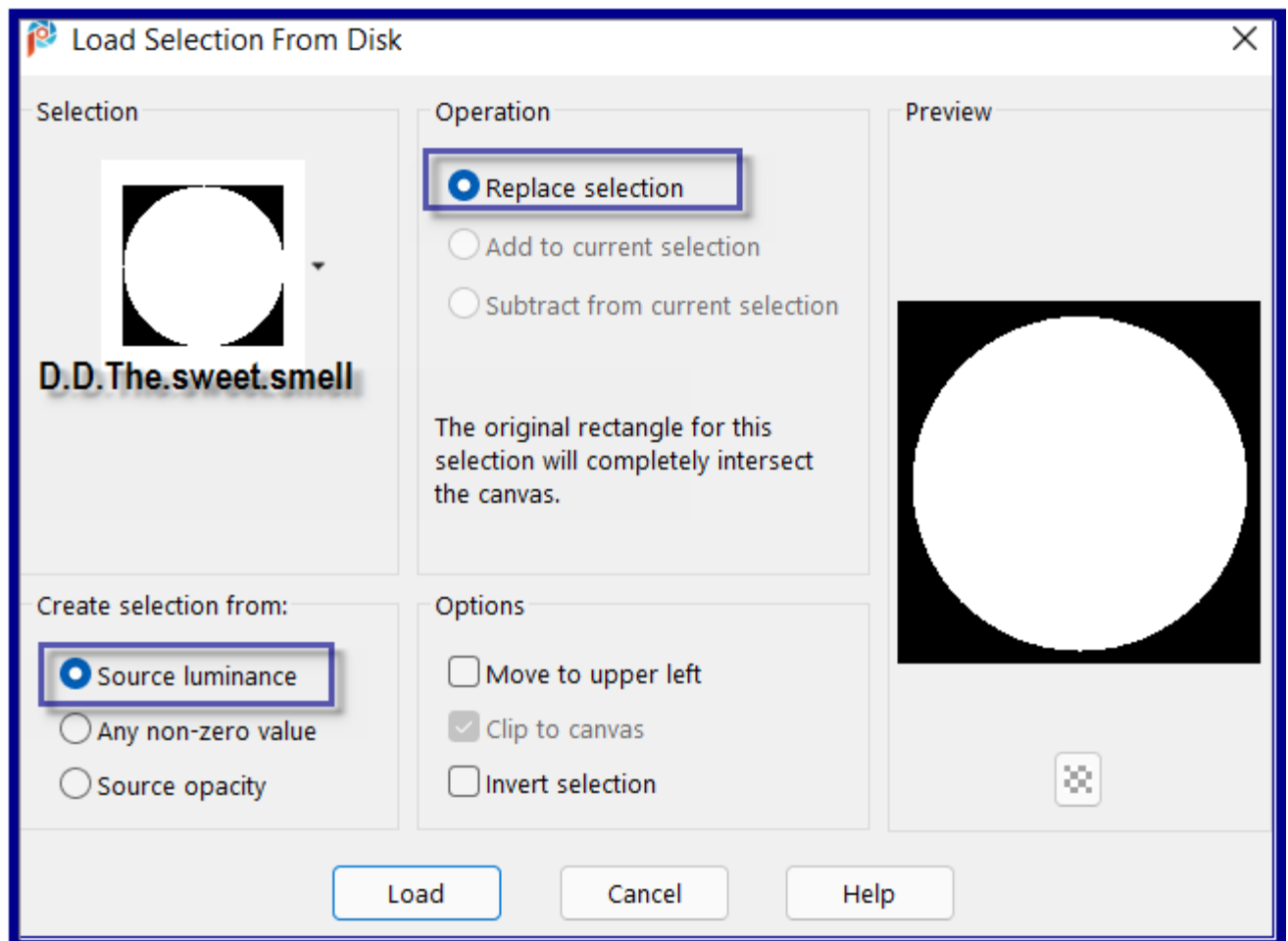
Layers/New Raster Layer  
 Flood fill with Gradient  
 Layers/Arrange/Move Down  
 Effects/Plugins/Filters Unlimited 2.0/Paper Textures/Canvas, Medium as follows:



Repeat Filters Unlimited 2.0/Paper Textures/Canvas, Medium

### Step Five:

Selections/Load/Save Selection/Load Selection D.D.The.sweet .smell from Disk as follows:



Flood fill with Background Pattern  
 Selections/Modify/Contract 5 pixels  
 Edit/Clear

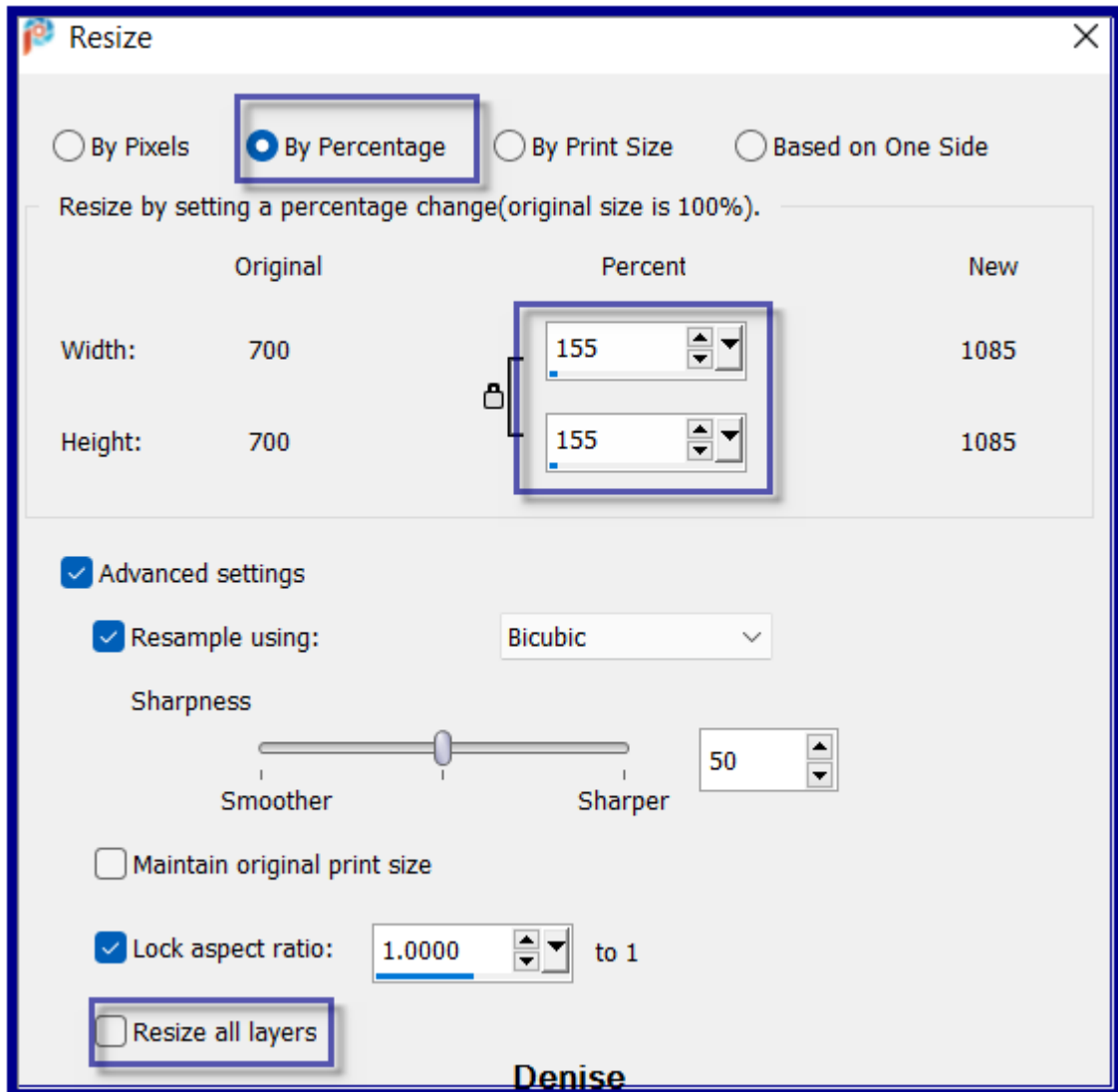
Floodfill with Foreground Gradient  
 Effects/Texture Effects/Texture  
 Selections/Modify/Contract 8 pixels  
 Edit/Clear

Flood fill with Background Pattern  
 Selections/Modify/Contract 5 pixels  
 Edit/Clear

Selections/Select None

### Step Six:

Maximise LlzMist~Floral018.psp  
 Edit/Copy    Edit/Paste as a New Layer  
 Image/Resize 155% as follows:

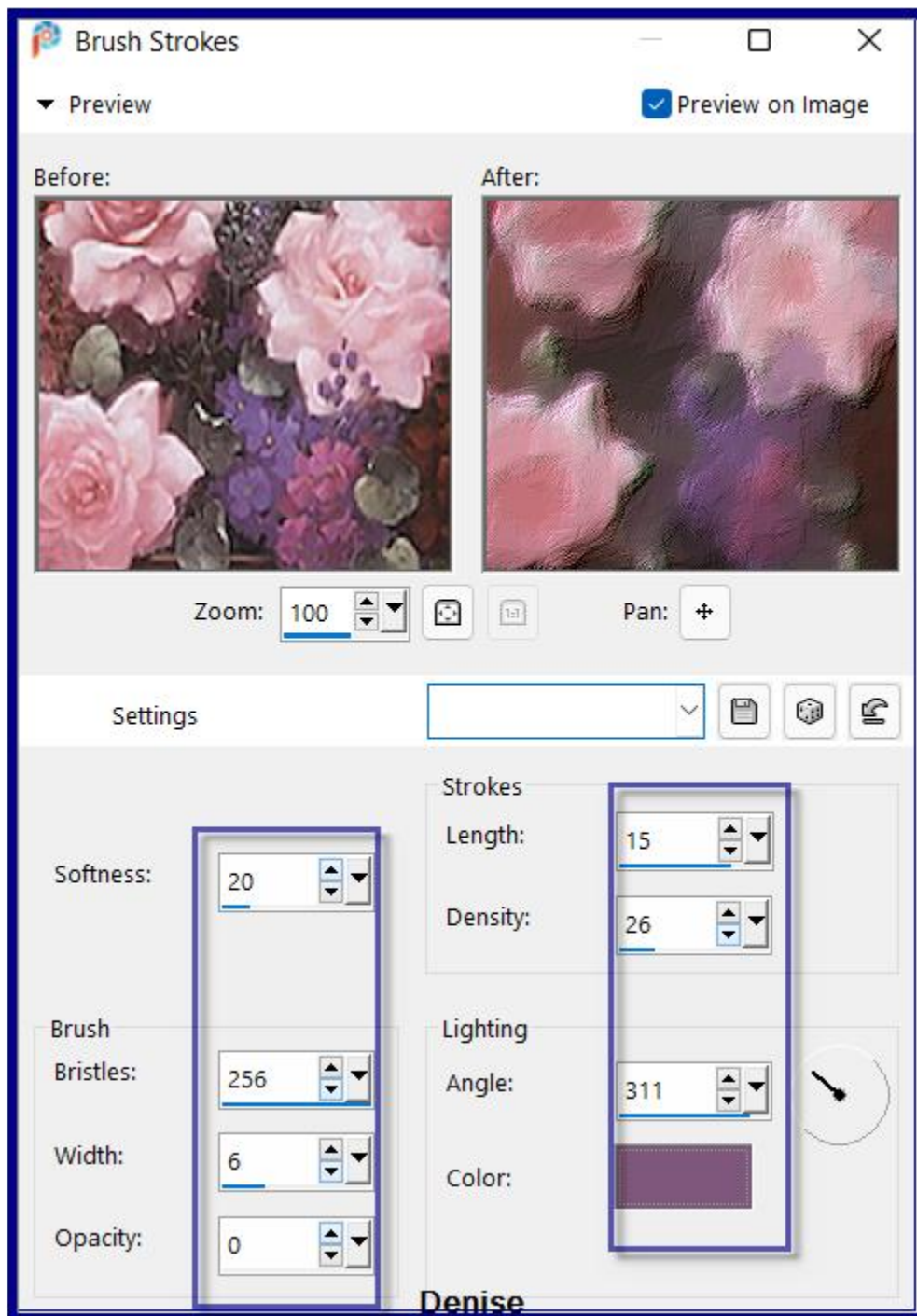


Adjust/Sharpness/Sharpen  
Select the Pick/Deform Tool

Use this tool to move the image up and down to fill in the space in the centre of the circle.

It's up to you if you need to do this with your image  
Effects/Art Media Effects/Brush Strokes as follows:

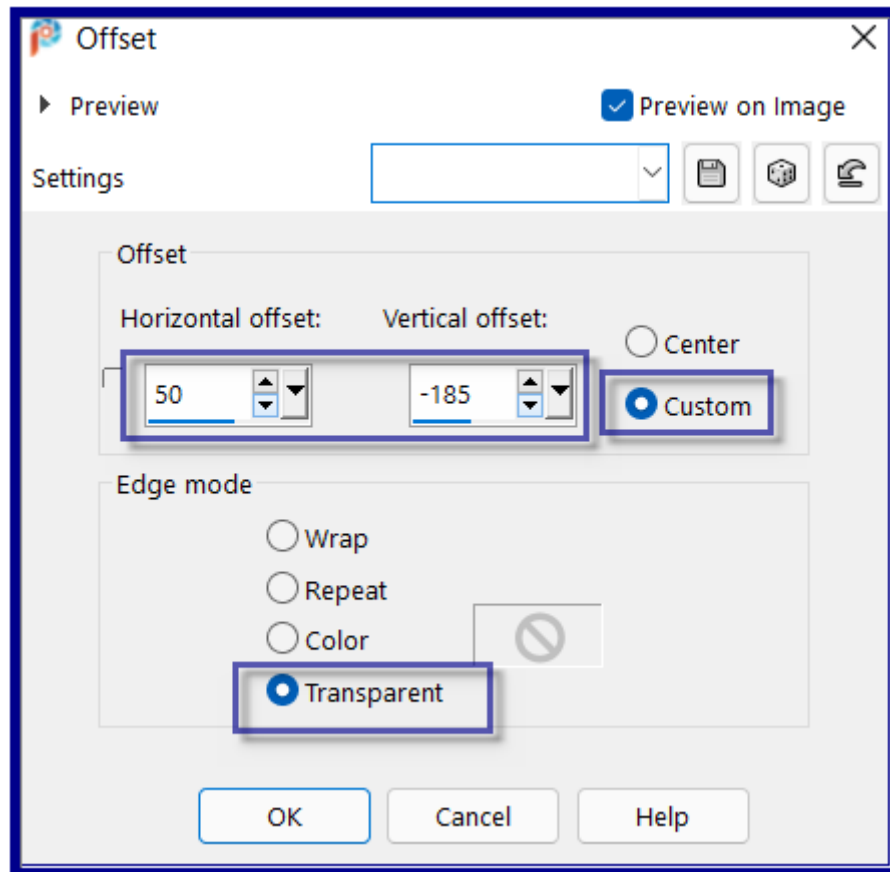




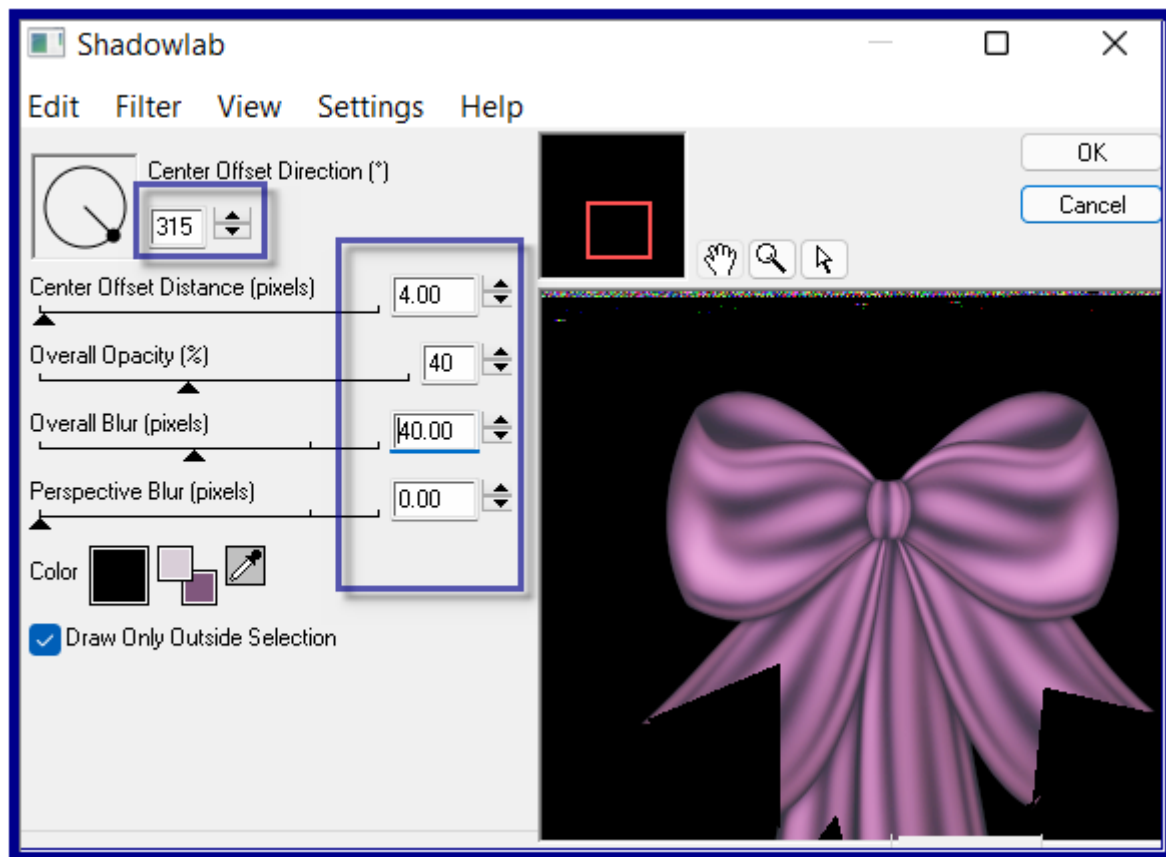
(this may take a little time before it works on the image - be patient)  
 Edit/Paste as New Layer (image should still be there)  
 Image/Resize/145%  
 Adjust/Sharpness/Sharpen

### Step Seven:

Maximise D.D.bow2.png  
 Edit/Copy Edit/Paste as New Layer  
 Effects/Image Effects/Offset as follows:



Effects/Plugins/Eye Candy 4000/Shadowlab as follows:



### Step Eight:

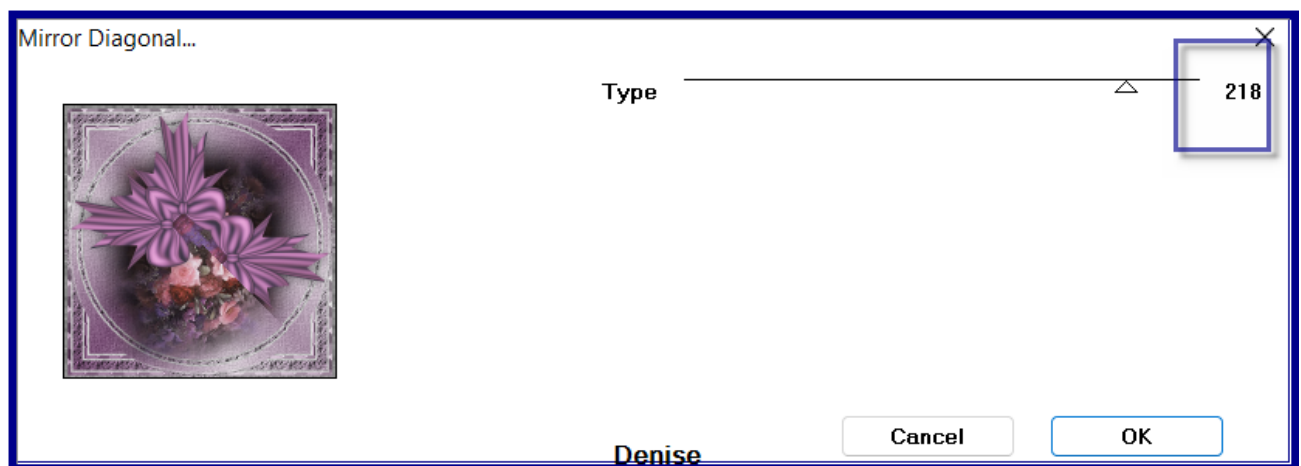
Layers/Merge/Merge All Flatten

Layers/Duplicate

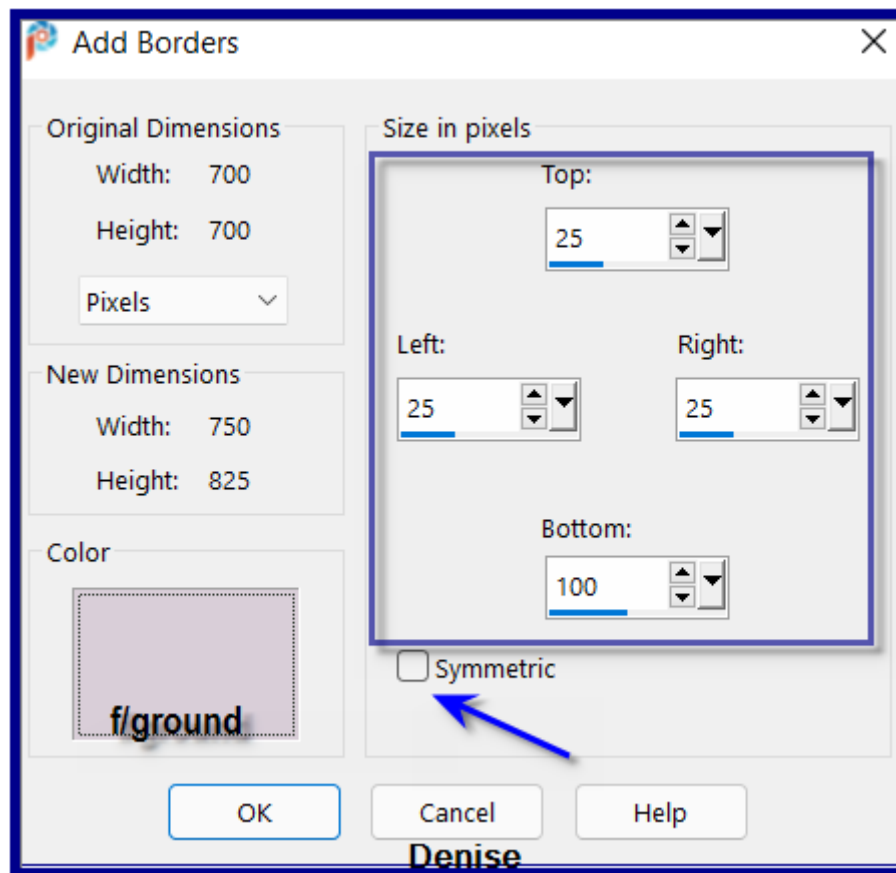
Image/Resize 90%

Adjust/Sharpness/sharpen

Effects/Plugins/MuRa's Seamless/Mirror Diagonal as follows:

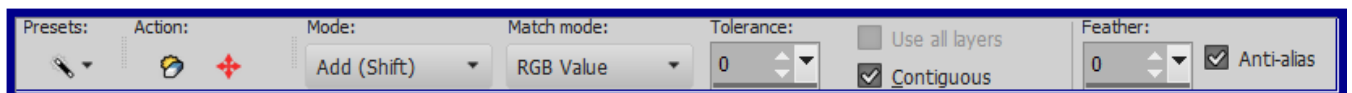


Image/Add Borders as follows:



### Step Nine:

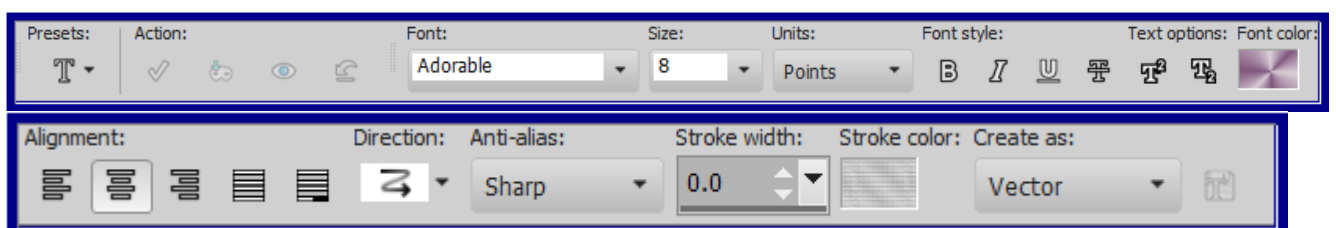
Magic Wand with the following settings:



Select border with Magic Wand  
Effects/Plugins/Filters Unlimited 2.0/Paper Textures/Canvas, Medium  
Repeat Canvas, Medium.

Change Background back to Background Colour

Text Tool with the following settings:

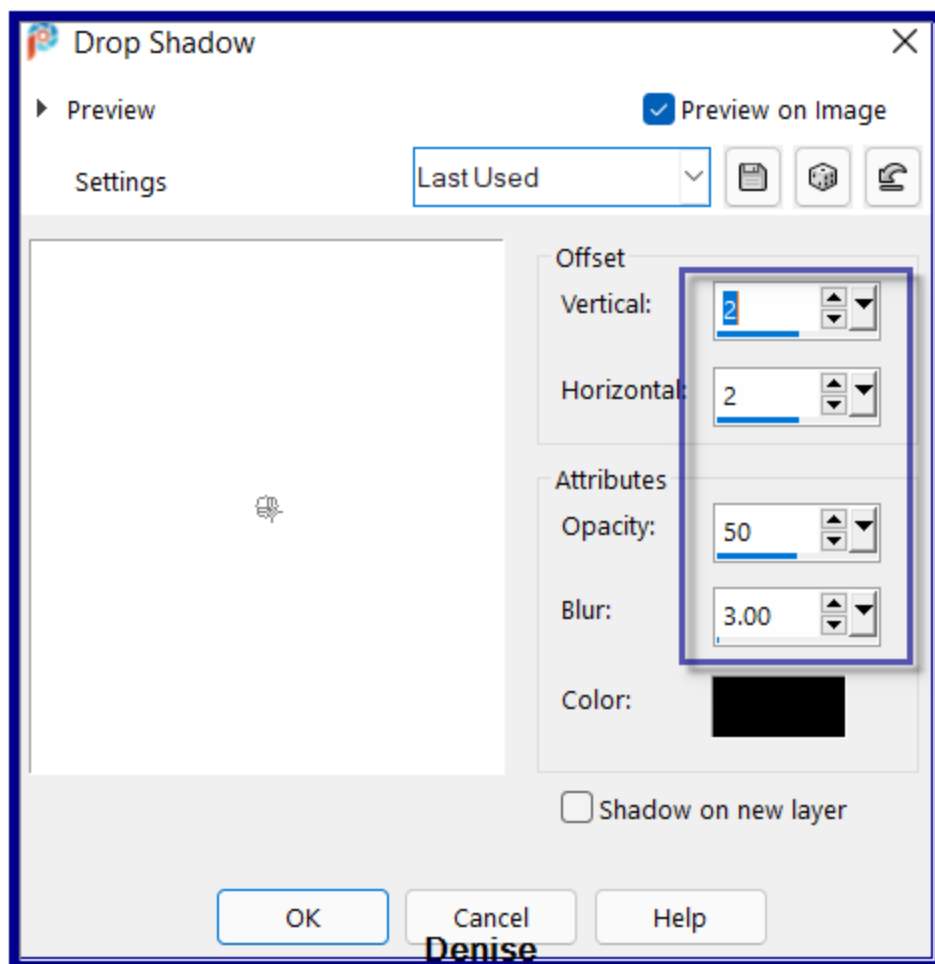


Settings may vary according to your version of PSP

Write:

It's time you realised, dear one,  
that life is short and fleet,  
so plan today to take the time  
to smell the roses sweet!

Convert to Raster  
Objects/Align/Horizontal Centre  
Effects/Plugins/MuRa's Seamless/Emboss at Alpha  
Effects/3D Effects/Drop Shadow as follows:



### Step Ten:

Image/Add Borders/5 pixels/Background colour

Maximise Signature.png

Edit/Copy Edit/Paste as New Layer

Place at bottom of image



Add your Watermark  
Layers/Merge All Flatten  
Image/Resize/900 pixels wide - height will adjust itself  
Adjust/Sharpness/Sharpen  
File/Export/JPEG Optimiser/Compression Value 20

I hope you have enjoyed this tutorial  
A big thank you to the ladies who test my Tutorials

## VERSION 2

