

This tutorial is written by Denise D. on 14th February, 2021  
from my own ideas.

Any resemblance to other tutorials is co-incidental and unintentional.  
If you wish to share my Tutorials, you **MUST** obtain my permission first.  
All I ask is that you advise me and credit for the tutorial is given to me and  
linked to

<http://escapingtopsp2.altervista.org/Home/homeb.html>

Please do not upload any of my completed Tutorial images onto sites  
such as Fotki, Pinterest, Photobucket or similar

## EASTER 2021





Thank you Inge-Lore for this German Translation



Click on the Box to download Supplies

### **Supplies**

Images:

Vintage Easter Postcard Lady With Stainglass Window by Donna.pspimage

You can join this Group at:

<https://groups.yahoo.com/neo/groups/TubesandMistsbyDonna/info>

lizztish\_easter-bunnies.pspimage

You can join this Group at:

<https://groups.google.com/forum/?fromgroups#!forum/emotivemists>

Easter image.png

Floral Spray.png

DeniseDSignature.png

Some of these image were obtained from the Internet

If you are the owner of this image, please contact me

so that credit can be given to you

### **Textures:**

JC\_060

### **Pattern:**

LACE prc\_lace030.png

### **Selections:**

D.D.Easter2021

D.D.Easter2021.1

### **Mask:**

creation.tine\_masque138.jpg

### **Presets:**

D.D.Easter2021

Double Click on the



icon in your supplies folder to install this Preset in your Plugin.

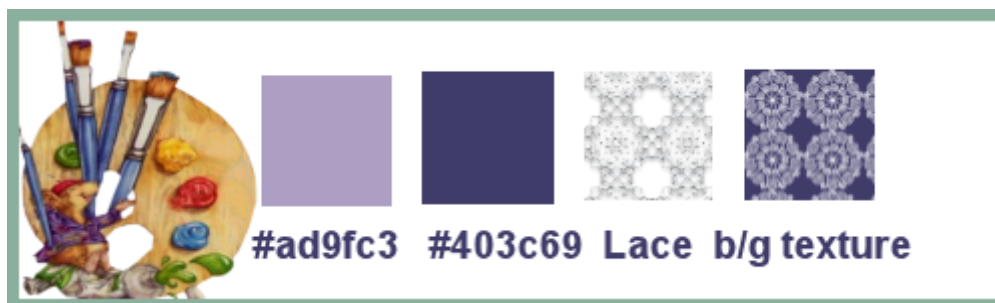
**Plugins:**

MuRa's Meister  
Eye Candy 4000  
Alien Skin Eye Candy 5.0/Impact  
&<Sandflower Specials"v">  
(Import into Filters Unlimited 2.0)  
Adjust/Variations  
Xero

Found here:



**Colour Swatch:**



**Notes:**

This Tutorial was created in Corel 2020.... **other versions may need adjustment**

Some of the graphics may be from Free to Use sites or Share Groups.

If you are the creator of one of these please let me know so that appropriate credit can be given.

No infringement of copyright is intended or intentional.

Before opening PSP, download plugins and install

**Please Note: Offset settings provided in this tutorial may vary according to size of your image.**

**Please adjust to suit.**

**The settings remain the same throughout this Tutorial unless otherwise stated.**

Set your Foreground colour to #ad9fc3

Set your Background colour to #403c69

**Step One:**

*Place Pattern in PSP Pattern Folder*

*Place Mask in PSP Mask Folder*

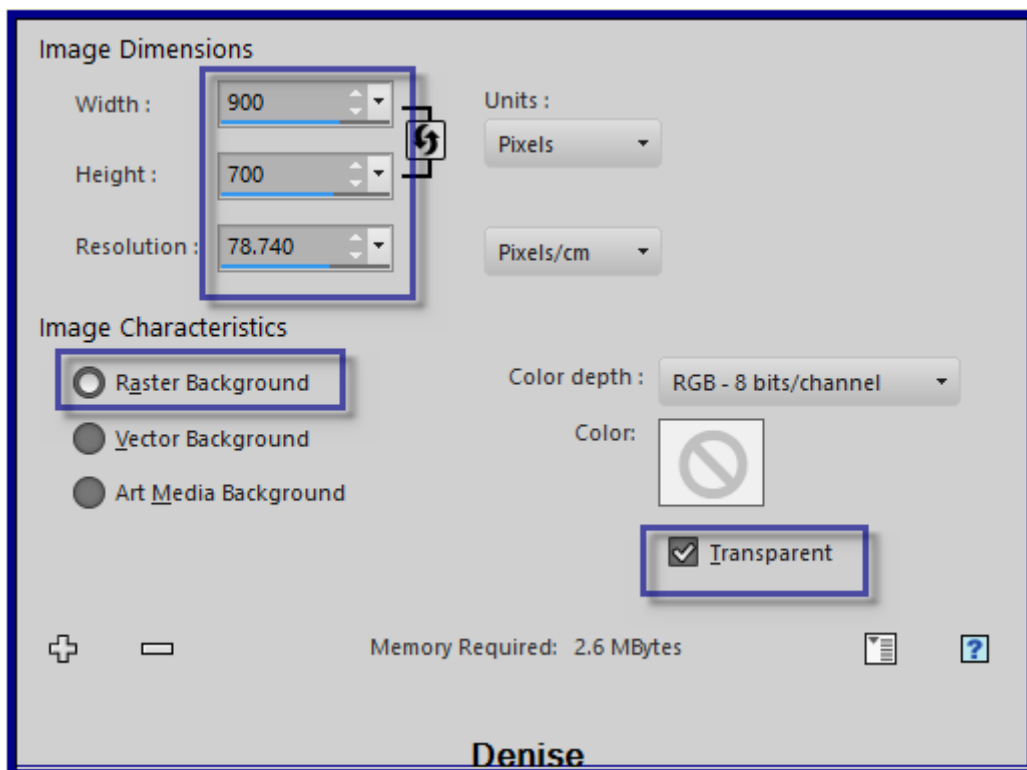
*Place Texture in PSP Texture Folder*

*Place Selections in PSP Selection Folder*

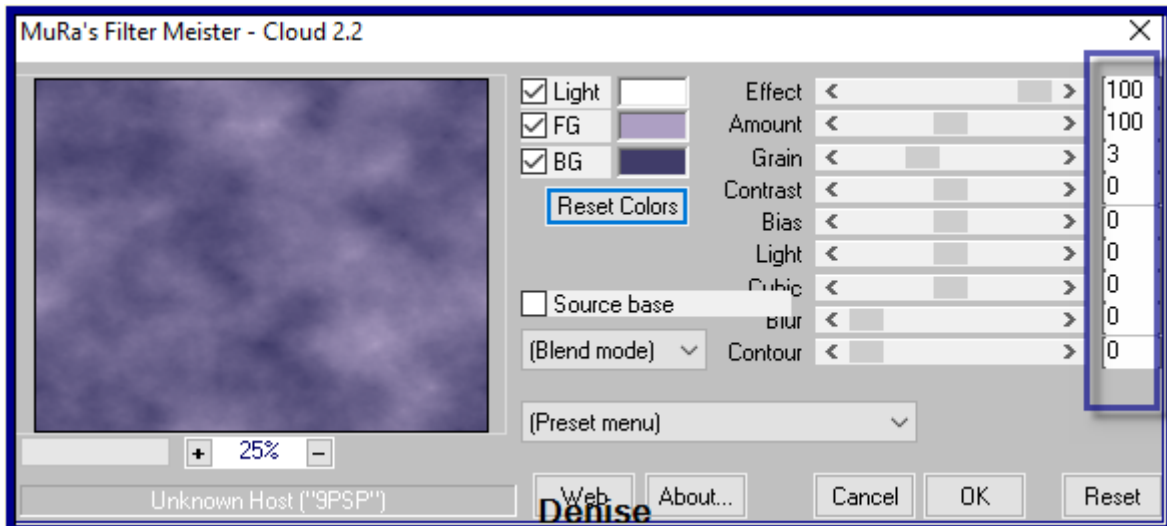
*Install Preset*

*Open graphics in PSP, duplicate (Shift D) and close the original.*

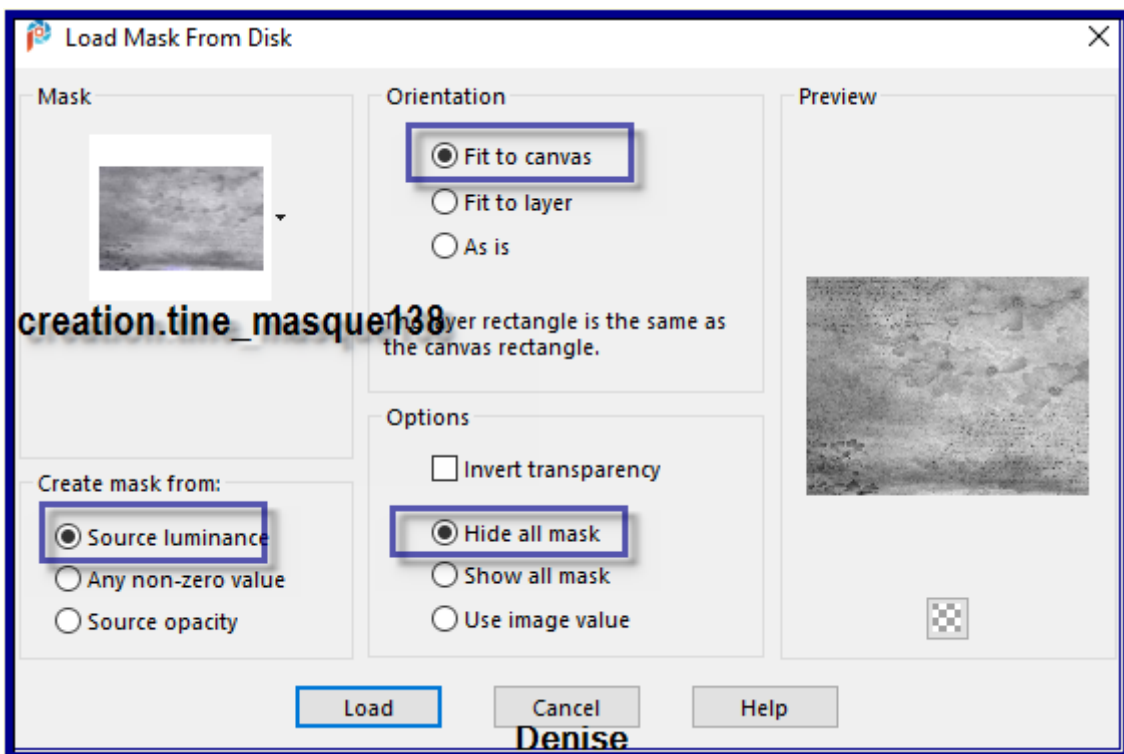
File/New/New Image 900 pixels x 700 pixels as follows:



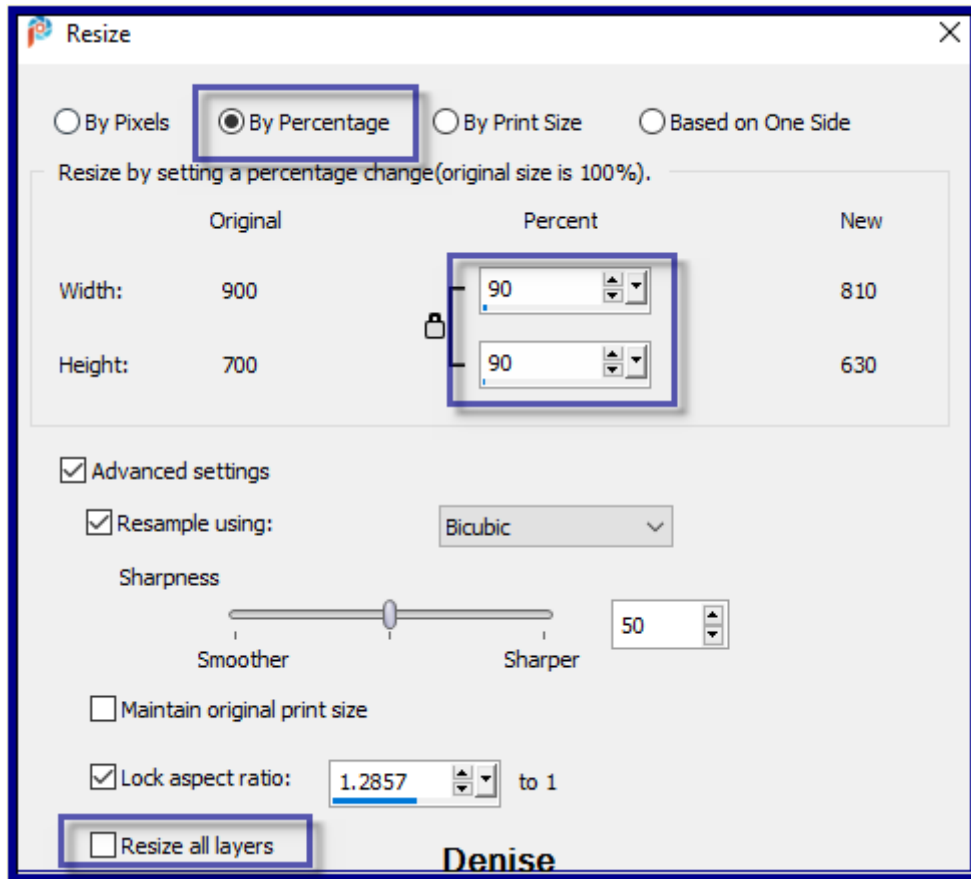
Effects/Plugins/MuRa's Meister/Cloud as follows:



**Step Two:**  
 Layers/Duplicate  
 Layers/New Raster Layer  
 Flood fill with Foreground Colour  
 Layers/Load/Save Mask/Load Mask creation.tine\_masque138 from Disk as follows:



Effects/Edge Effects/Enhance More  
 Layers/Merge/Merge Group  
 Layers/Merge/Merge Down  
 Image/Resize/90% as follows:



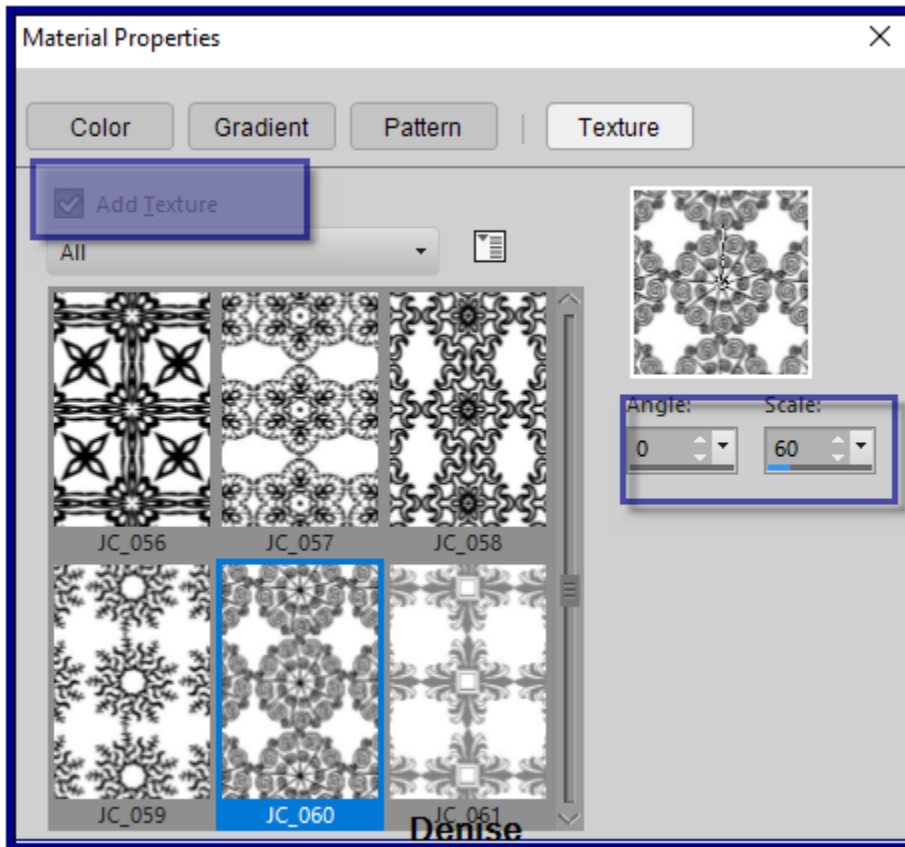
Adjust/Sharpness/Sharpen More

**Step Three:**

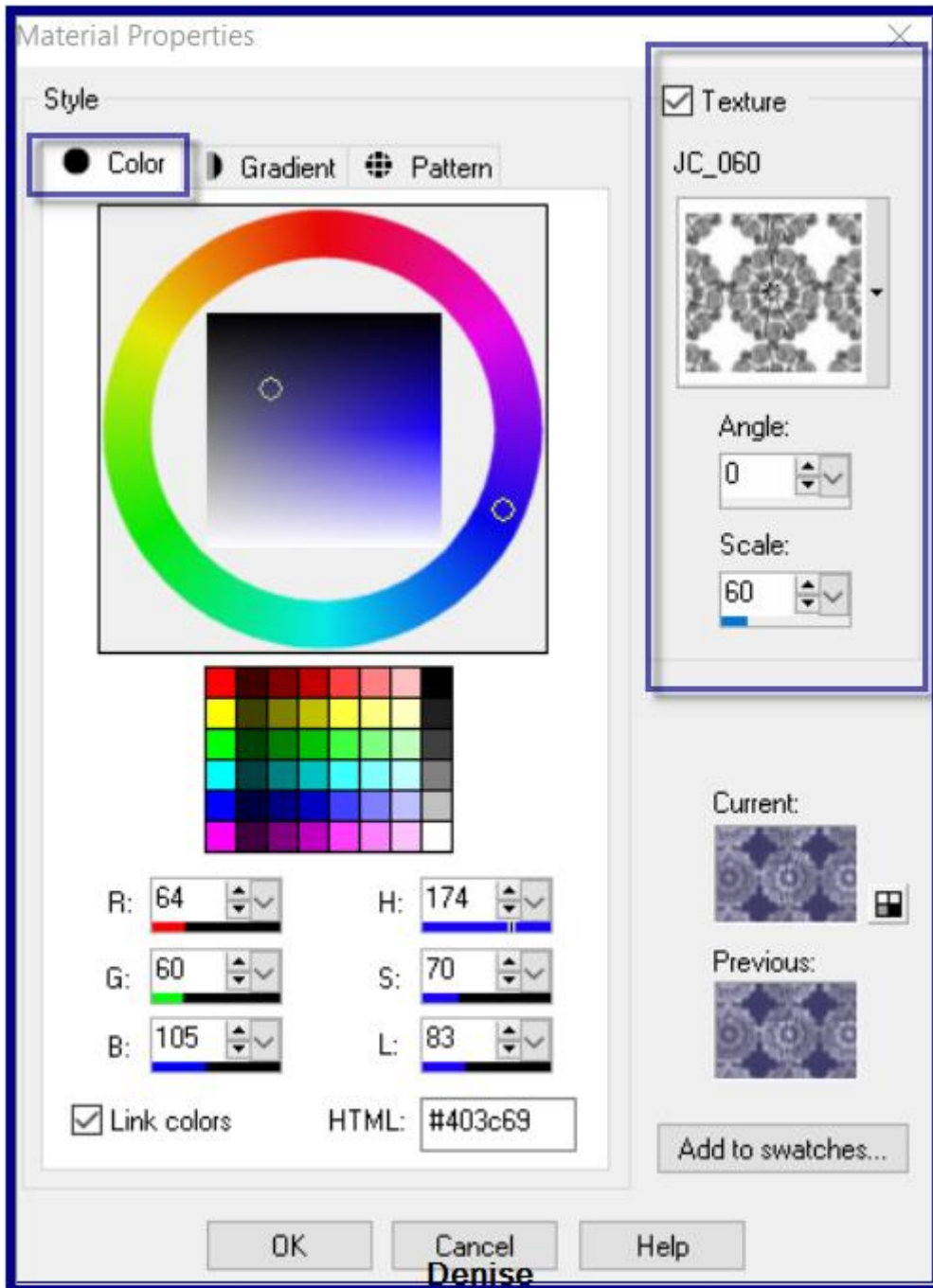
Select Raster 1

Layers/New Raster Layer

Select Background Colour and change the settings to the following:

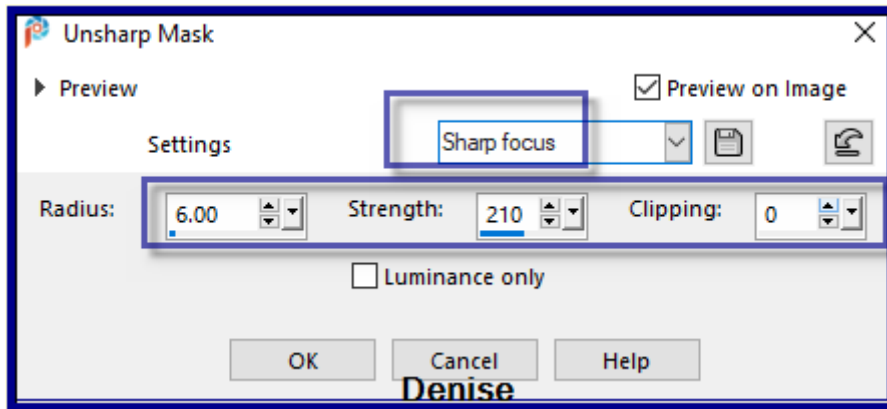


For earlier versions of PSP:



Flood fill with Background/Texture  
Layers/Merge/Merge Down  
Adjust/Sharpness/Unsharp Mask as follows:



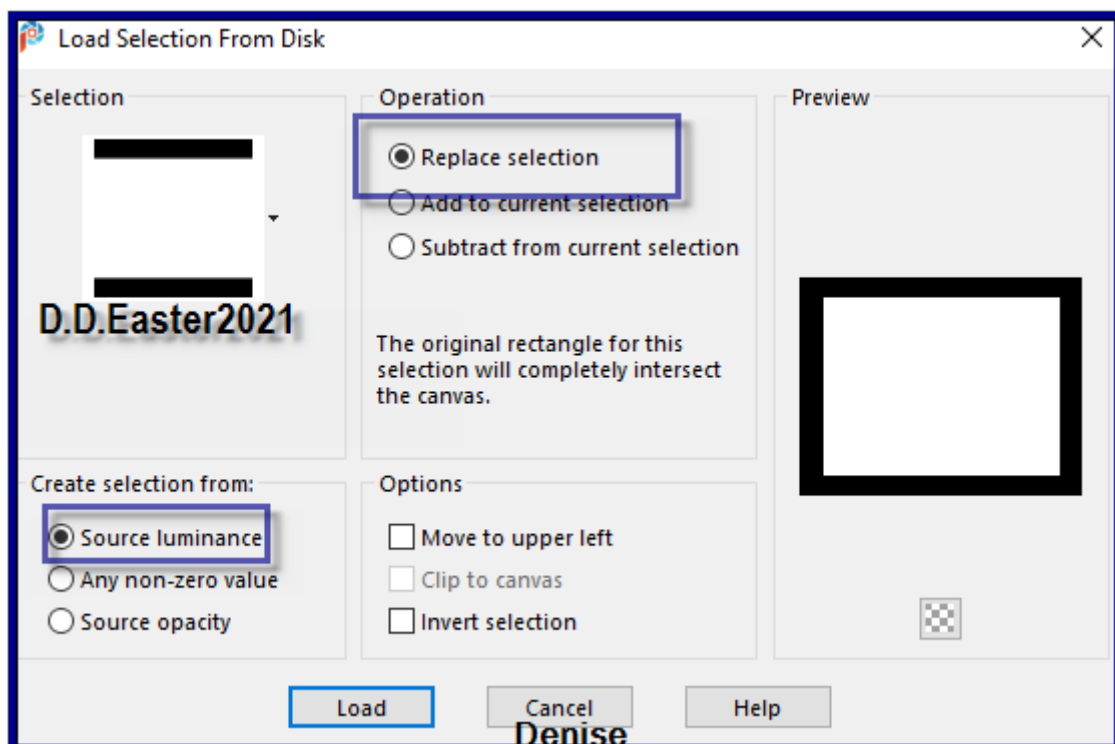


#### Step Four:

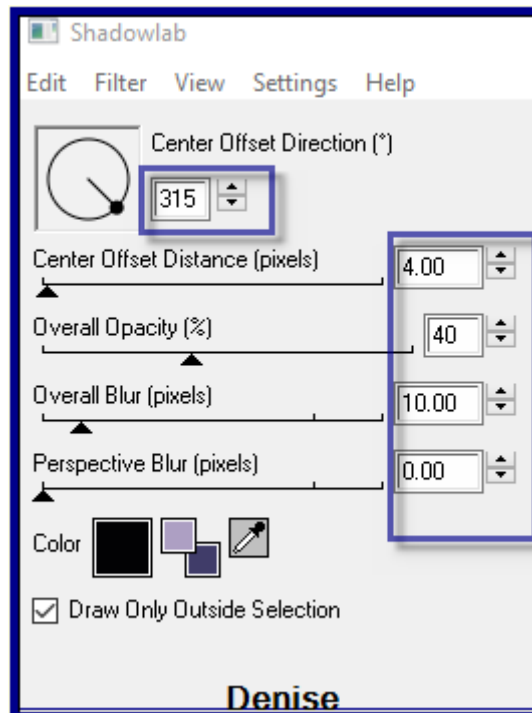
Select Copy of Raster 1 Layer  
 Selections/Select All  
 Selections/Float  
 Selections/Defloat  
 Layers/New Raster Layer  
 Flood fill with Background Colour/Texture BUT change Texture settings to  
 Scale 29  
 Effects/Plugins/Xero/Clarity/Default Settings  
 Selections Modify/Contract 28 pixels  
 Edit/Clear  
 Selections/Select None

#### Step Five:

Selections/Load/Save Selection/Load Selection D.D.Easter2021 as follows:



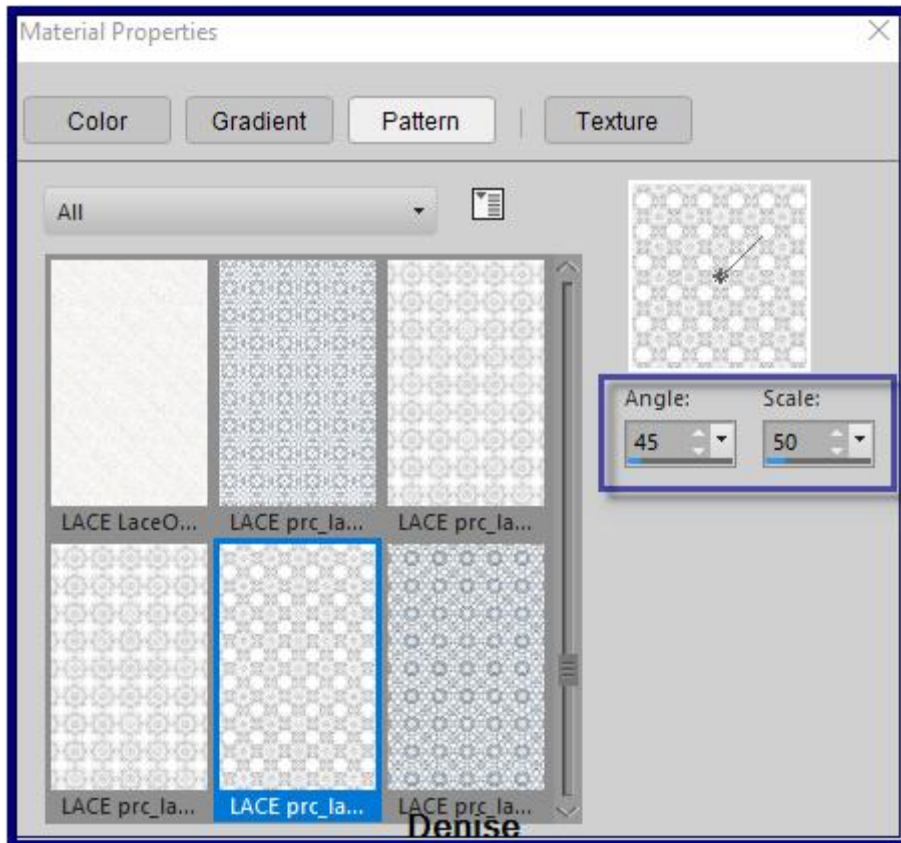
Effects/Plugins/Eye Candy 4000/Shadowlab as follows:



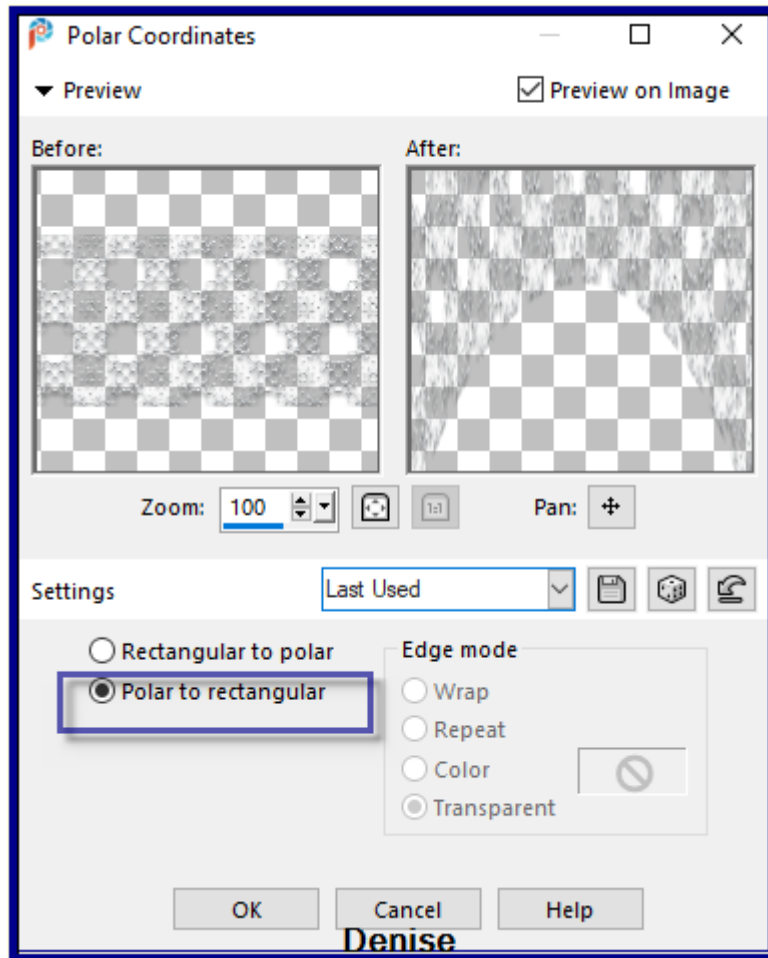
Repeat Shadowlab/Direction 135  
Selections/Select None  
Layers/Merge/Merge Down

**Step Six:**

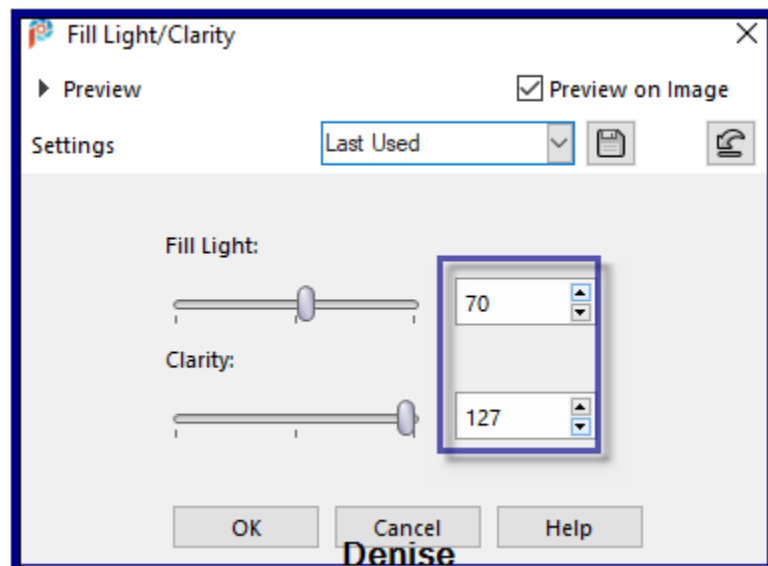
Selection/Load/Save Selection/Load Selection D.D.Easter2021.1 from Disk  
Layers/New Raster Layer  
Change Foreground Colour to Pattern LACEprc\_lace030.png as follows:



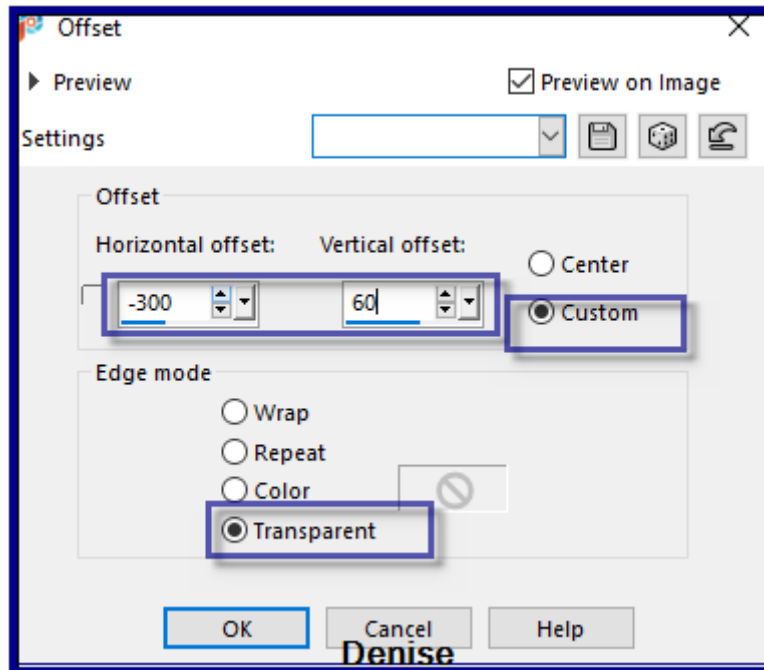
Flood fill with Foreground Pattern  
Selections/Select None  
Effects/Distortion Effects/Polar Coordinates as follows:



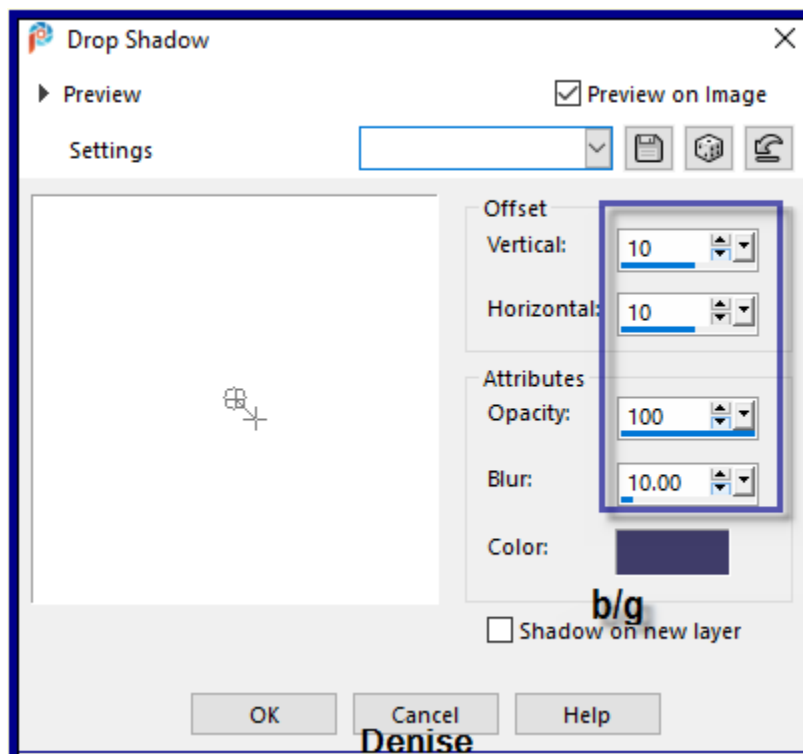
Adjust/Brightness and Contrast/Fill Light/Clarity as follows:



Effects/Image Effects/Offset as follows:

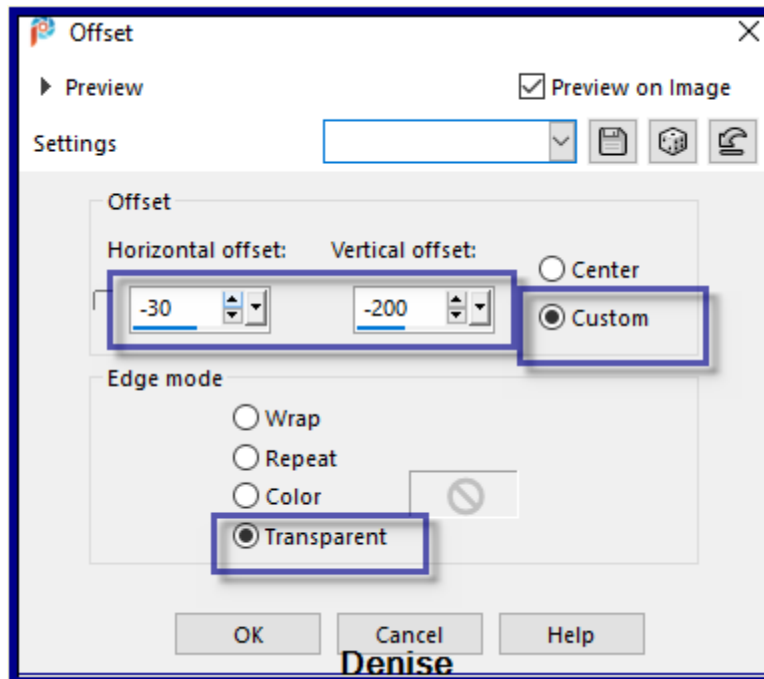


Effects/3D Effects/Drop Shadow as follows:

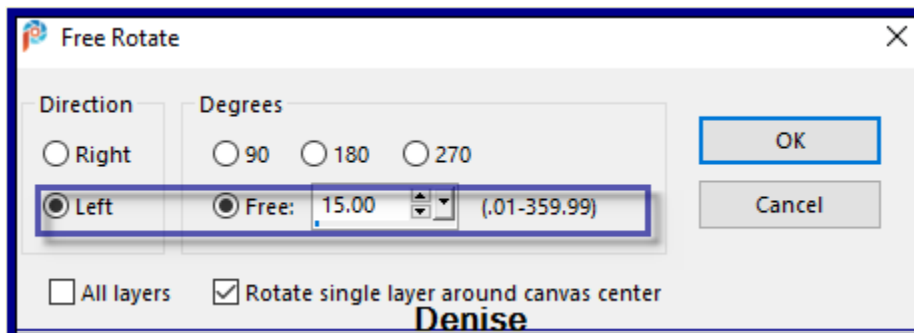


**Step Seven:**

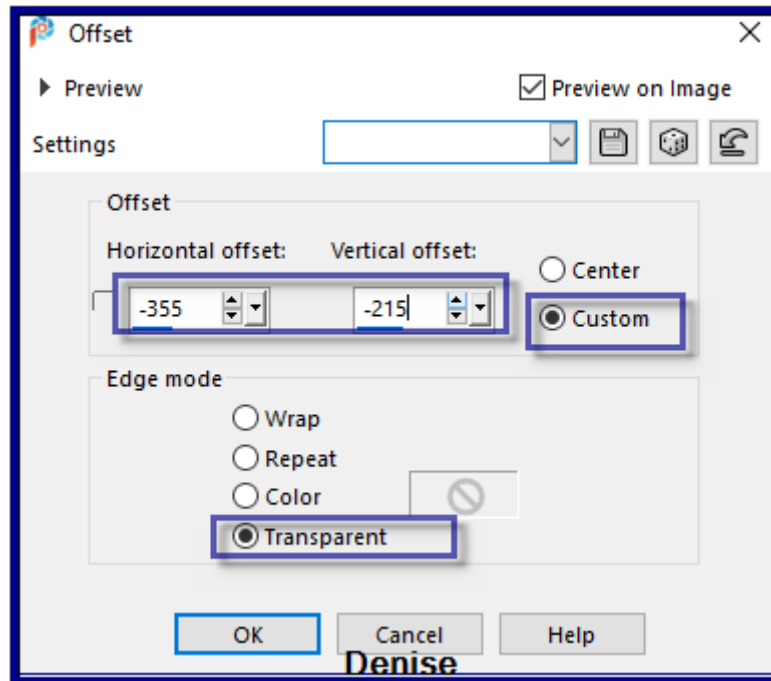
Maximise lizztish\_easter-bunnies.pspimage  
 Edit/Copy Edit/Paste as New Layer  
 Image/Resize/85%  
 Adjust/Sharpness/Sharpen  
 Effects/Image Effects/Offset as follows:



Change Opacity to 75%  
Maximise Easter Egg.png  
Edit/Copy Edit/Paste as New Layer  
Image/Free Rotate/Left/15 Degrees



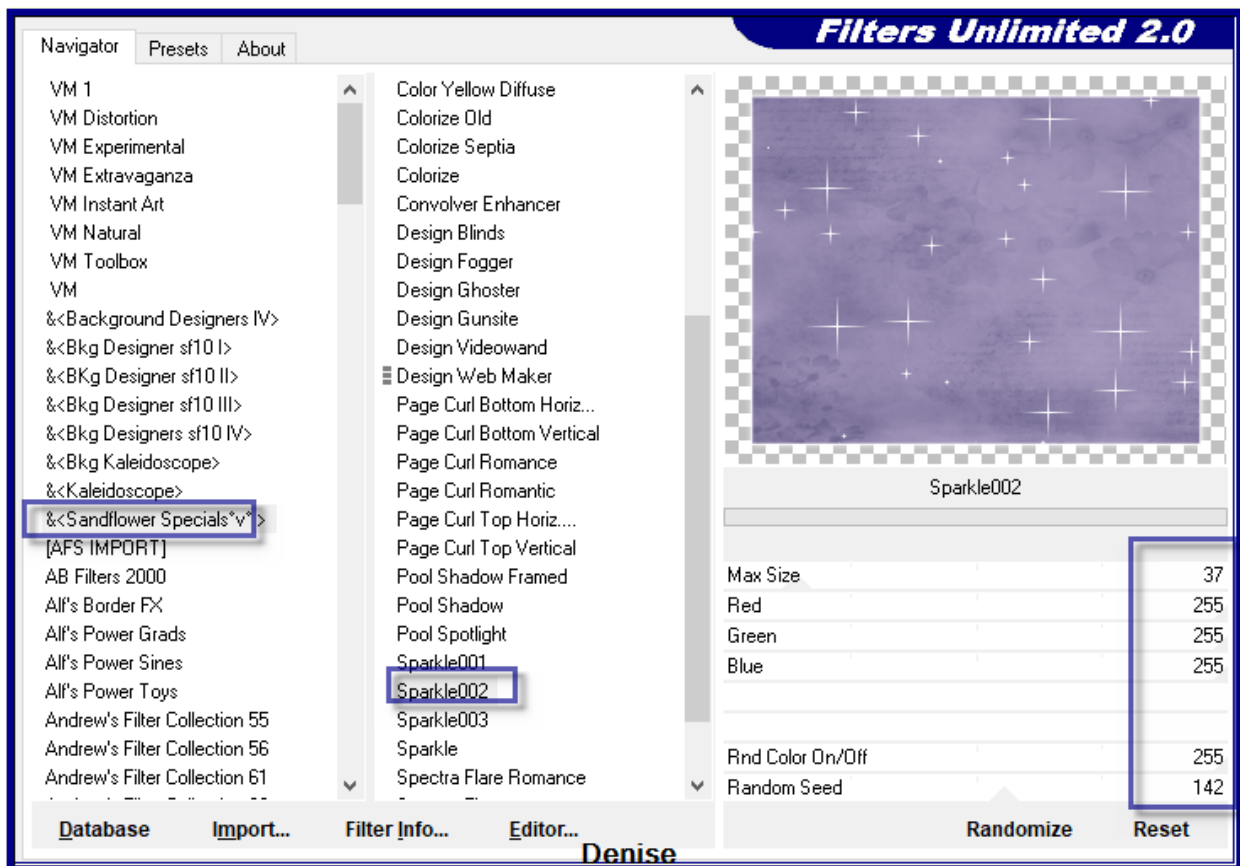
Effects/Image Effects/Offset as follows:



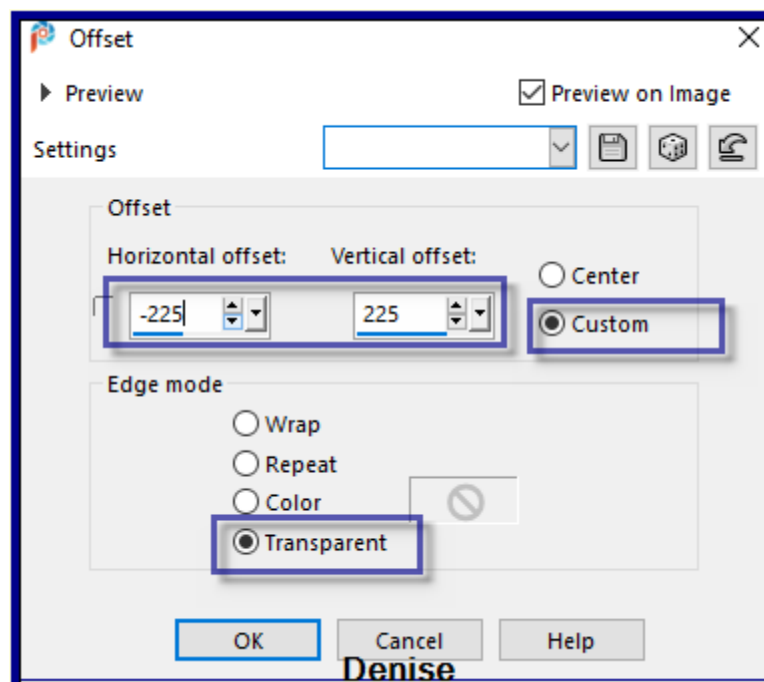
Adjust/Sharpness/Sharpen More

**Step Eight:**

Select Copy of Raster 1 Layer  
Effects/Plugins/Filters Unlimited 2.0/Sandflower Specials/Sparkle 2  
as follows:



**Step Nine:**  
Maximise Floral Spray.png  
Edit/Copy Edit/Paste as New Layer  
Effects/Image Effects/Offset as follows:

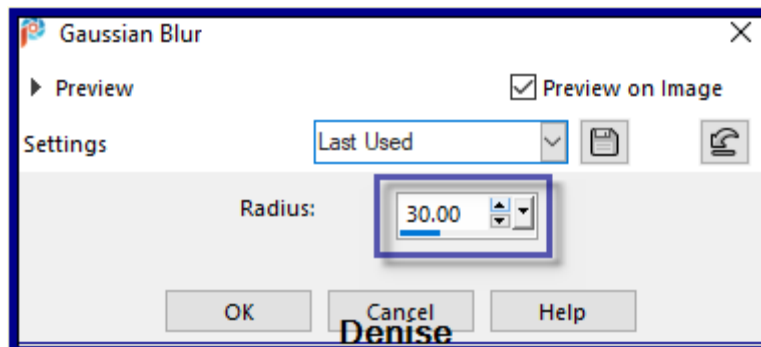




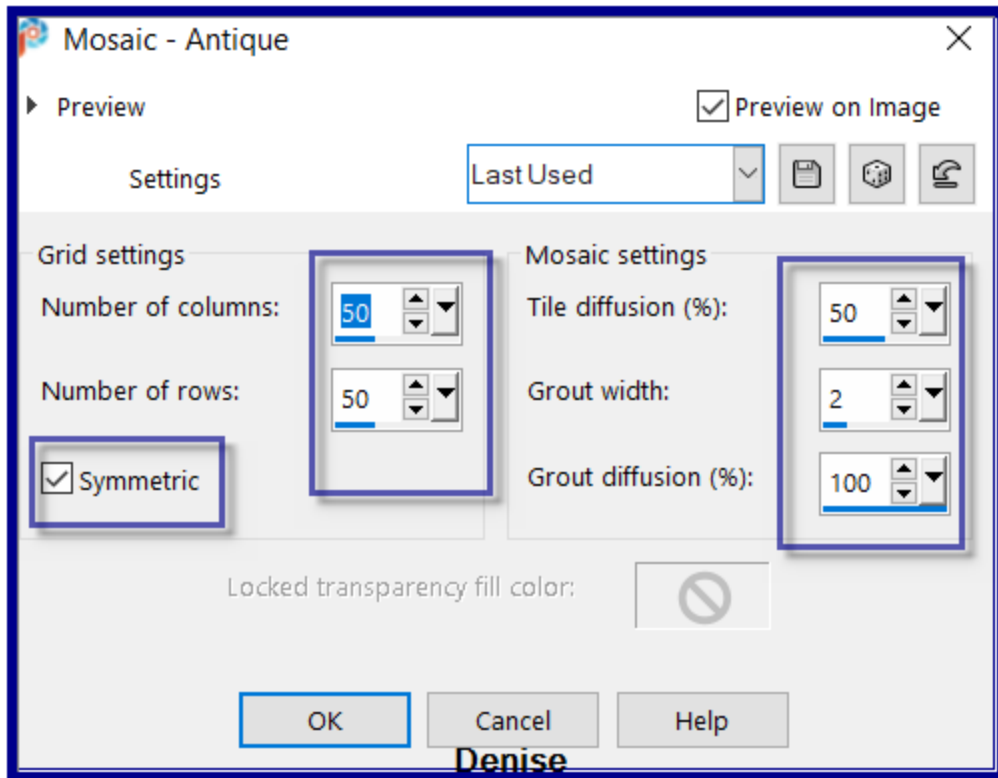
Layers/Duplicate  
Effects/Image Effects/Seamless Tiling/Default Settings  
Layers/Duplicate  
Image/Mirror/Horizontal OR Image/Mirror

**Step Ten:**

Selections/Select All  
Image/Add Borders/7 pixels/Background Colour  
Selections/Invert  
Effects/Plugins/Filters Unlimited 2.0/Sandflower Specials/Pool  
Spotlight/Default Settings  
Effects/Plugins/Eye Candy 4000/Shadowlab  
Repeat Shadowlab/Direction 315  
Selections/Select None  
Layers/Duplicate  
Image/Resize/90%  
Adjust/Sharpness/Sharpen  
Effects/Plugins/Eye Candy 4000/Shadowlab  
Repeat Shadowlab/Direction 135  
Select Background Layer  
Adjust/Blur/Gaussian Blur as follows:



Effects/Texture Effects/Mosaic Antique as follows:



Effects/Plugins/Filters Unlimited 2.0/Sandflower Specials/Sparkle 2

**Step Eleven:**

Selections/Select All

Image/Add Borders/10 pixels/Background Colour

Selections/Invert

Effects/Plugins/Filters Unlimited 2.0/Sandflower Specials/Pool

Spotlight/Default Settings

Effects/Plugins/Eye Candy 4000/Shadowlab

Repeat Shadowlab/Direction 315

Selections/Select None

Maximise Vintage Easter Postcard Lady With Stainglass Window by

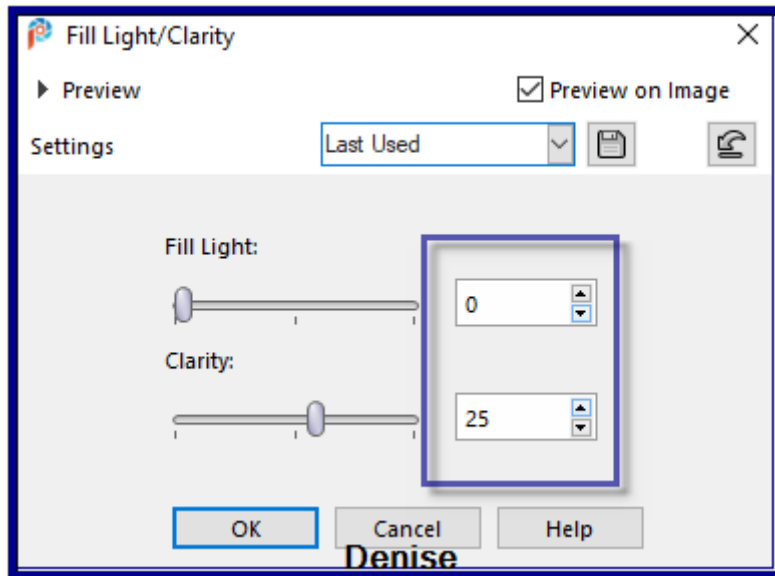
Donna.pspimage

Edit/Copy Edit/Paste as New Layer

Image/Resize/ 65%

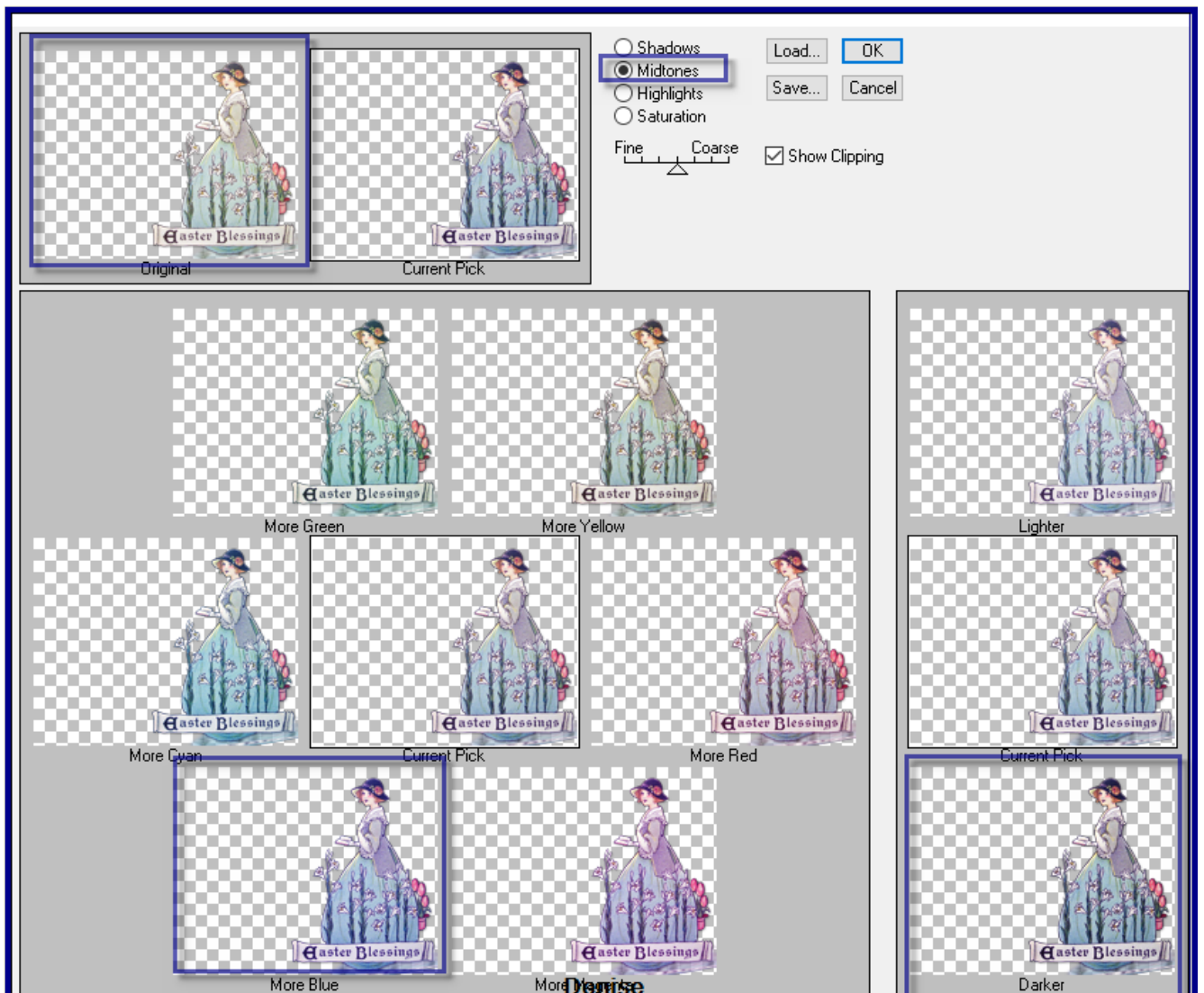
Adjust/Sharpness/Sharpen

Adjust/Brightness and Contrast/Fill Light/Clarity as follows:

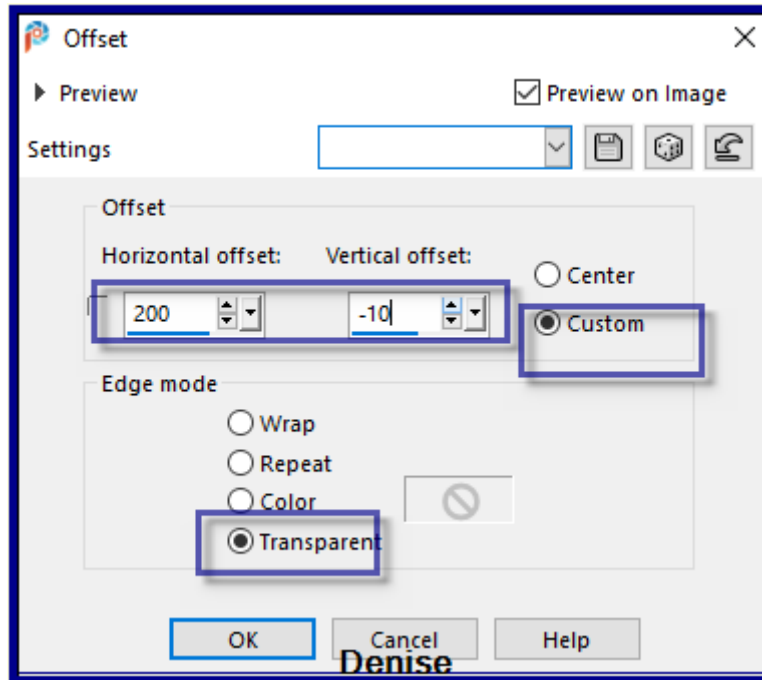


### Step Twelve:

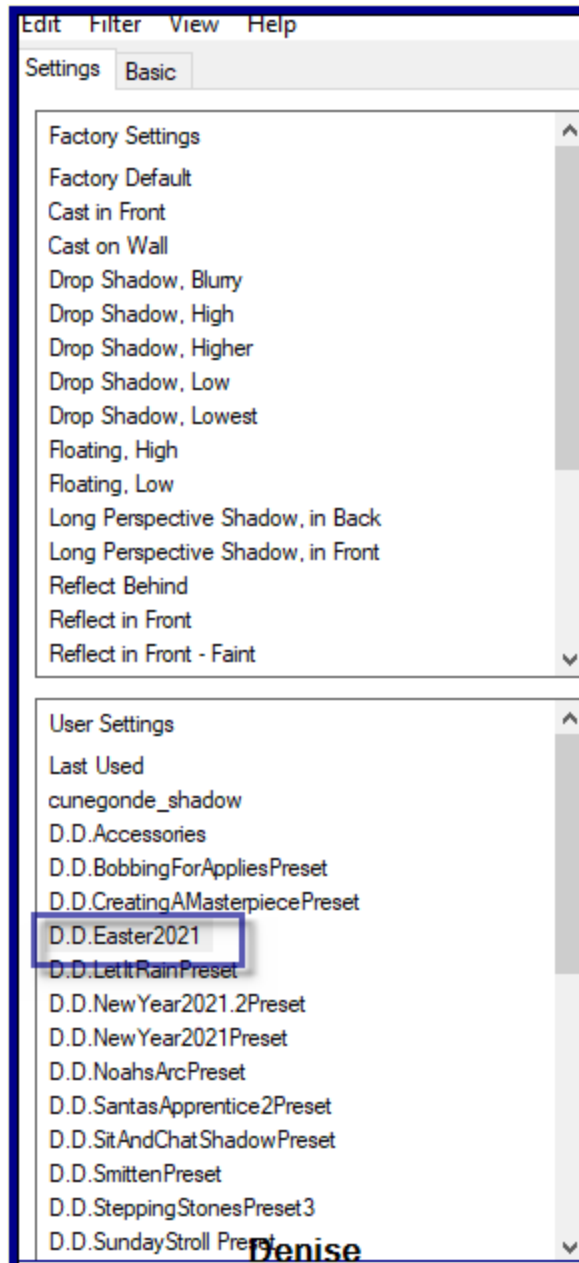
Effects/Plugins/Adjust/Variations/Original/More Blue/Darker as follows:

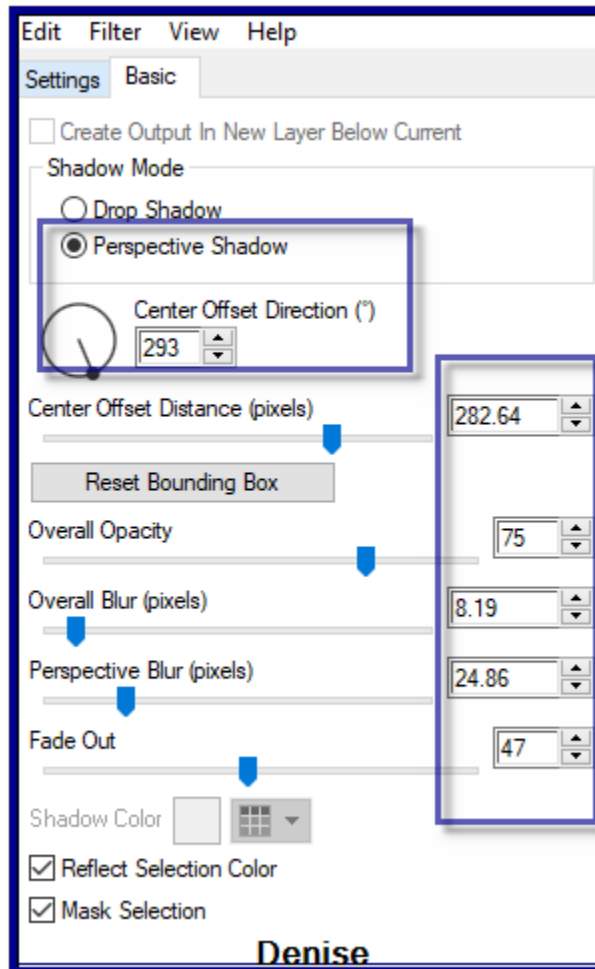


Effects/Image Effects/Offset as follows:



Effects/Plugins/Eye Candy 4000/Shadowlab  
Effects/Plugins/Alien Skin Eye Candy 5.0/Impact/Perspective  
Shadow/D.D.Easter2021 Preset OR as follows:





Maximise DeniseDSignature.png  
Edit/Copy Edit/Paste as New Layer  
Place at bottom of Layer  
Layers/New Raster Layer  
Add your Watermark  
Layers/Merge All Flatten  
Image/Resize/900 pixels wide - height will adjust itself  
File/Export/JPEG Optimiser/Compression Value 20

I hope you have enjoyed this tutorial  
A big thank you to the ladies who test my Tutorials  
TESTERS' RESULTS



FRAN



LILLIAN



<https://escapingtopsp2.blogspot.com/>