

This tutorial is written by Denise D. on 14th November, 2020  
from my own ideas.

Any resemblance to other tutorials is co-incidental and unintentional.  
If you wish to share my Tutorials, you **MUST** obtain my permission first.  
All I ask is that you advise me and credit for the tutorial is given to me and  
linked to

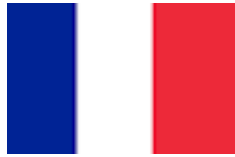
<http://escapingtopsp2.altervista.org/Home/homeb.html>

Please do not upload any of my completed Tutorial images onto sites  
such as Fotki, Pinterest, Photobucket or similar

## SURPRISE



Thank you Inge-Lore for this German Translation



Thank you Marion for this French Versions



Click on the Box to download Supplies

### **Supplies**

Images:

little girl-ducks.png

You can join this Group at:

<https://groups.yahoo.com/neo/groups/Safe-Haven-Graphics/>

lizztish\_simplicity-bg1.pspimage

You can join this Group at:

<https://groups.google.com/forum/?fromgroups#!forum/emotivemists>

Vintage Easter Basket by Donna.png

You can join this Group at:

<https://groups.yahoo.com/neo/groups/TubesandMistsbyDonna/info>

Text.png

decos232-sandi.pspimage

Some of these image were obtained from the Internet

If you are the owner of this image, please contact me

so that credit can be given to you

### **Patterns:**

GOLD arguld10.jpg

### **Mask:**

1250182292\_nikita\_masque.jpg

You can join this Group at:

<http://www.reveries.fr/accueil.php>

### **Selections:**

D.D.Surprise

D.D.Surprise2

D.D.Surprise2.1

D.D.Surprise3

**Plugins:**

AFS IMPORTS

&<Bkg Kaleidoscope>

Graphics Plus

(Import all into Filters Unlimited 2.0)

Texture

Eye Candy 4000

AAA Frames

Found here:



AND

**Notes:**

This Tutorial was created in Corel 2020.... **other versions may need adjustment**

Some of the graphics may be from Free to Use sites or Share Groups.

If you are the creator of one of these please let me know so that appropriate credit can be given.

No infringement of copyright is intended or intentional.

Before opening PSP, download plugins and install

**Please Note: Offset settings provided in this tutorial may vary according to size of your image.  
Please adjust to suit.**

**The settings remain the same throughout this Tutorial unless otherwise stated.**

Set your Foreground colour to #a96654

Set your Background colour to #efe8b5

**Step One:**

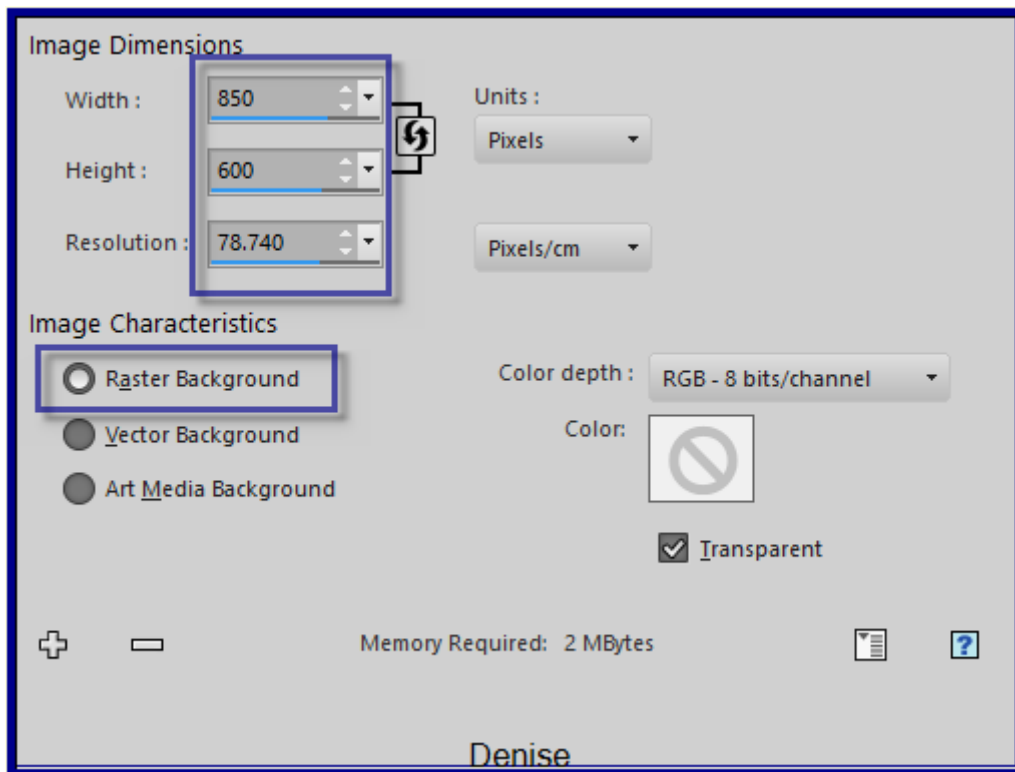
*Place Pattern in PSP Pattern Folder*

*Place Mask in PSP Mask Folder*

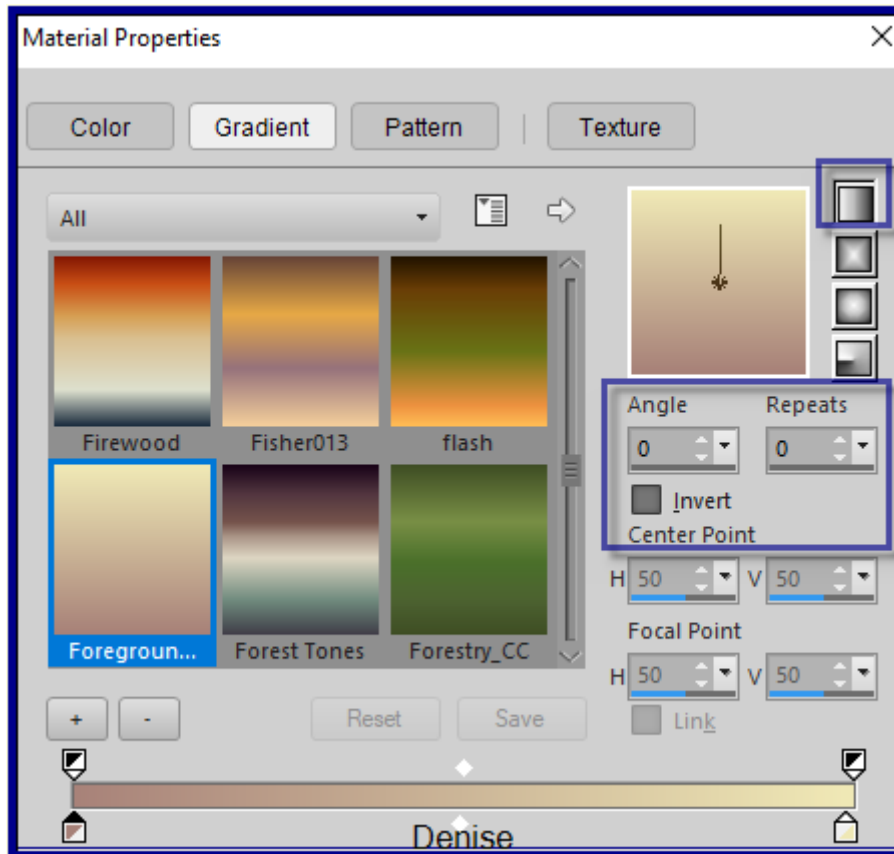
*Place Selection in PSP Selection Folder*

Open graphics in PSP, duplicate (Shift D) and close the original.

File/New/New Image 850 pixels x 600 pixels as follows:

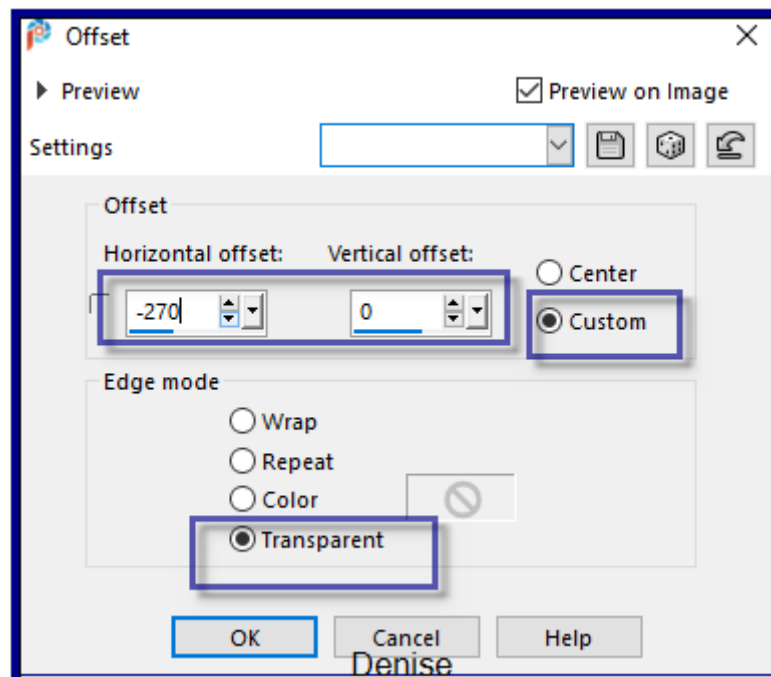


Change Foreground Colour to Foreground/Background/Linear Gradient as follows:



### Step Two:

Maximise lizztish\_simplicity-bg1.pspimage  
 Edit/Copy Edit/Paste as New Layer  
 Layers/Duplicate  
 Effects/Image Effects/Offset as follows:

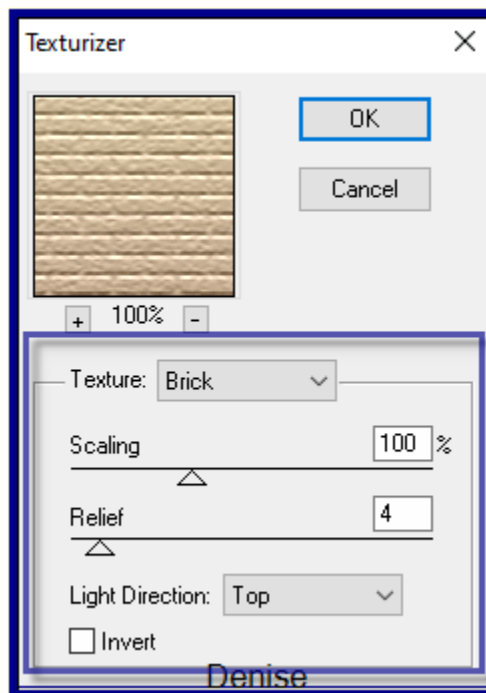


Layers/Duplicate  
Image/Mirror/Horizontal Or Image/Mirror  
Layers/Merge/Merge Visible  
Pick/Deform Tool with the following settings:

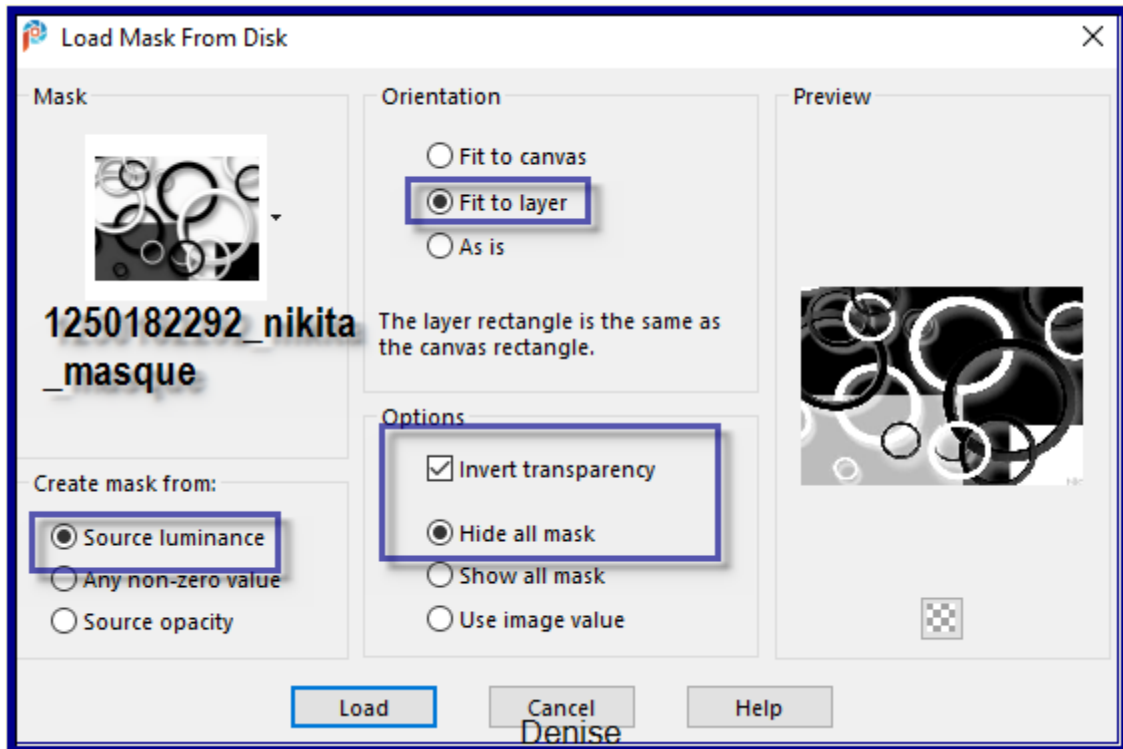


Drag the right and left sides out to fill the Layer  
Deselect Pick/Deform Tool

**Step Three:**  
Layers/New Raster Layer  
Flood fill with Foreground Gradient  
Effects/Plugins/Texture/Texturizer/Brick as follows:

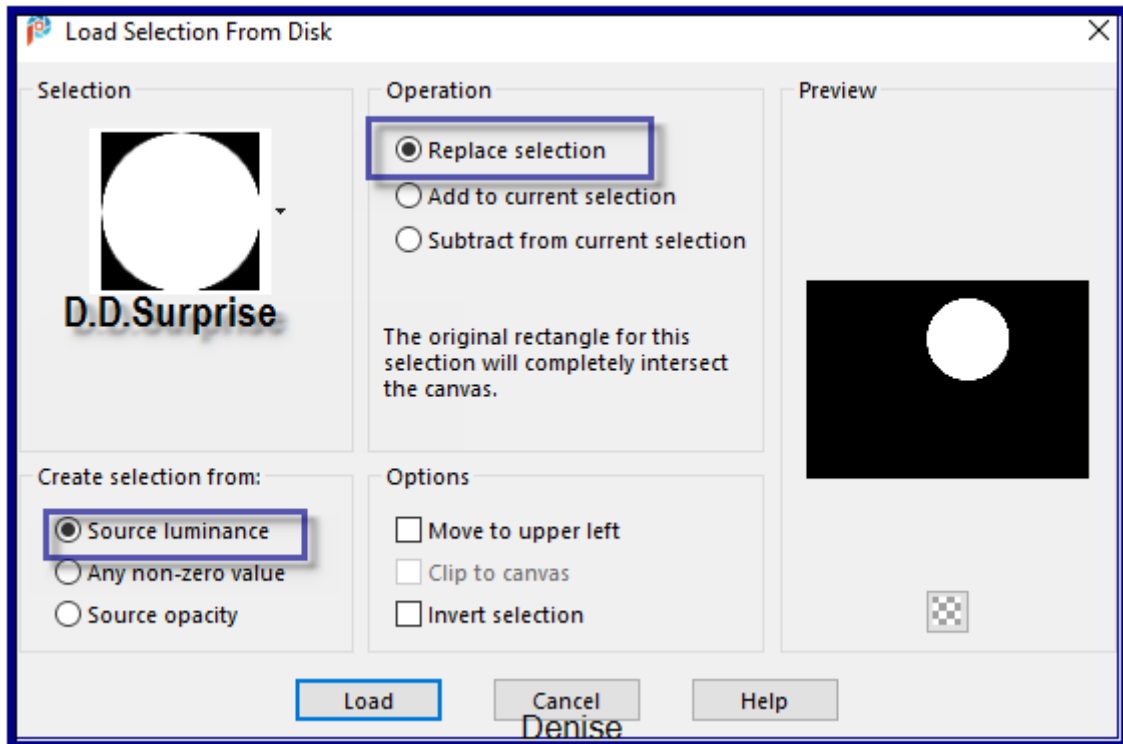


Layers/Load/Save Mask/Load Mask1250182292\_nikita\_masque.jpg as follows:



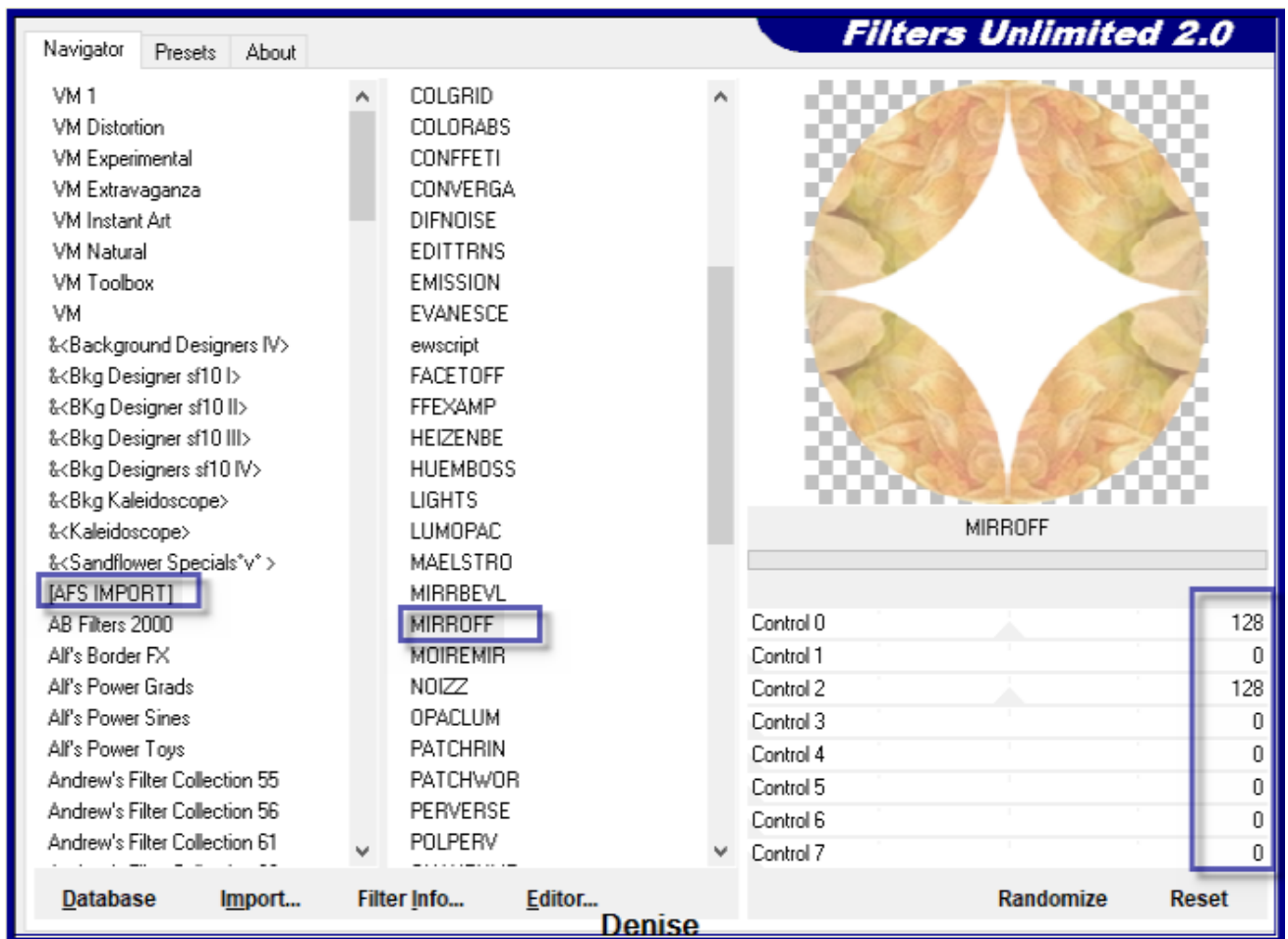
Layers/Merge/Merge Group  
Adjust/Sharpness/Sharpen More

**Step Four:**  
Layers/New Raster Layer  
Selections/Load/Save Selection/Load Selection D.D.Surprise from Disk as follows:

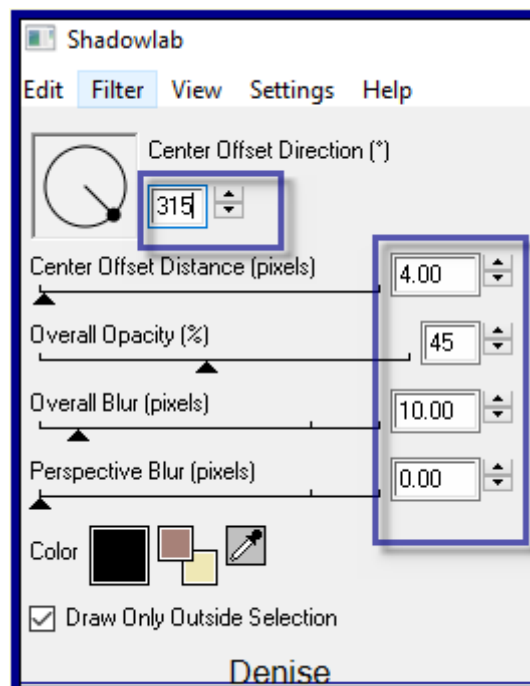


Select Merged Layer  
Promote Selection to Layer  
Effects/Plugins/Filters Unlimited 2.0/(AFS IMPORT)/MIRROFF as follows;



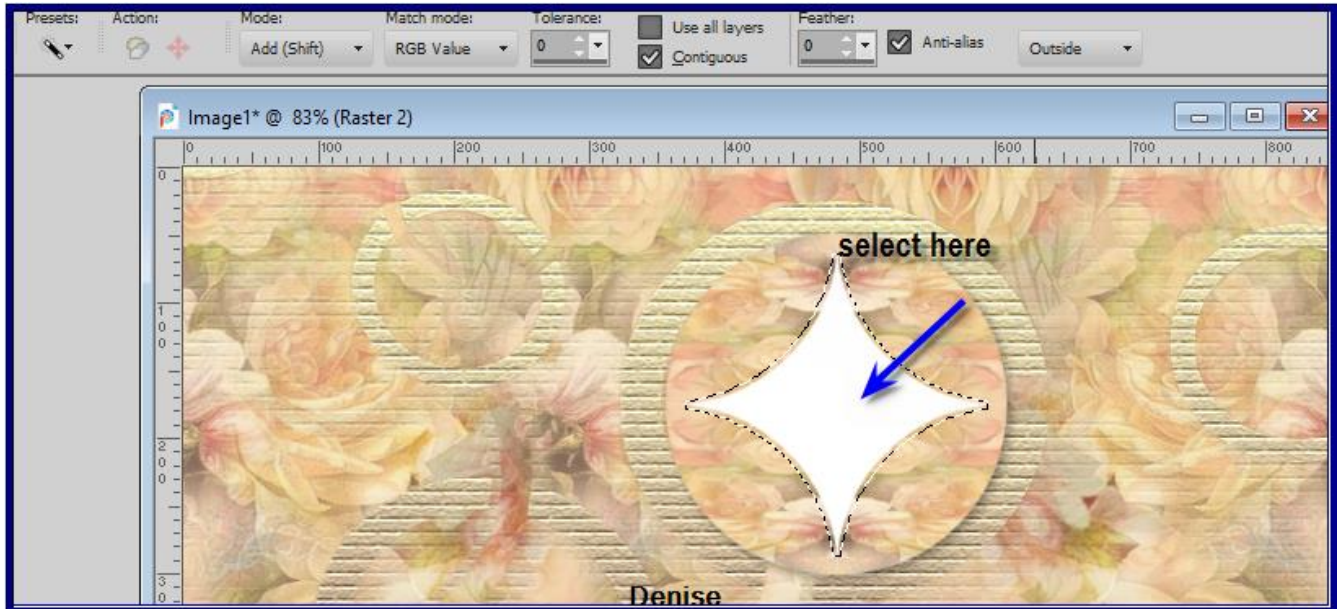


Effects/Plugins/Eye Candy 4000/Shadowlab as follows:

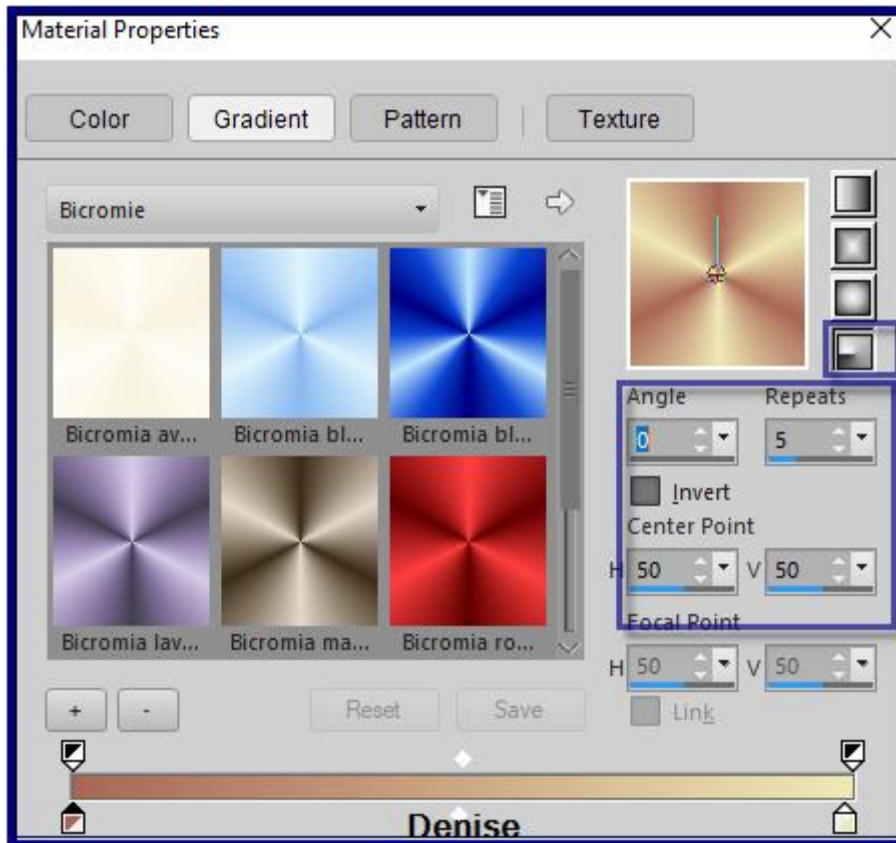


## Selections/Select None

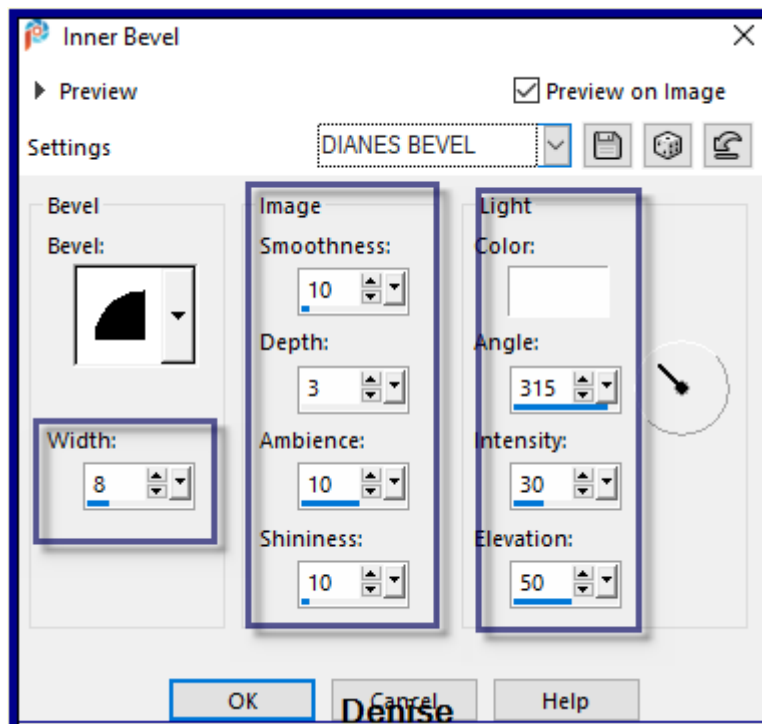
**Step Five:**  
Magic Wand with the following settings:



Select the white area in the middle of the circle  
Edit/Clear  
Selections/Modify/Expand 2 pixels  
Layers/New Raster Layer  
Layers/Arrange/Bring to Top  
Change Foreground Gradient to Foreground/Background Radial Gradient  
as follows:



Flood fill with Gradient  
Effects/3D Effects/Inner Bevel as follows:



Selections/Select None  
Effects/Plugins/Eye Candy 4000/Shadowlab

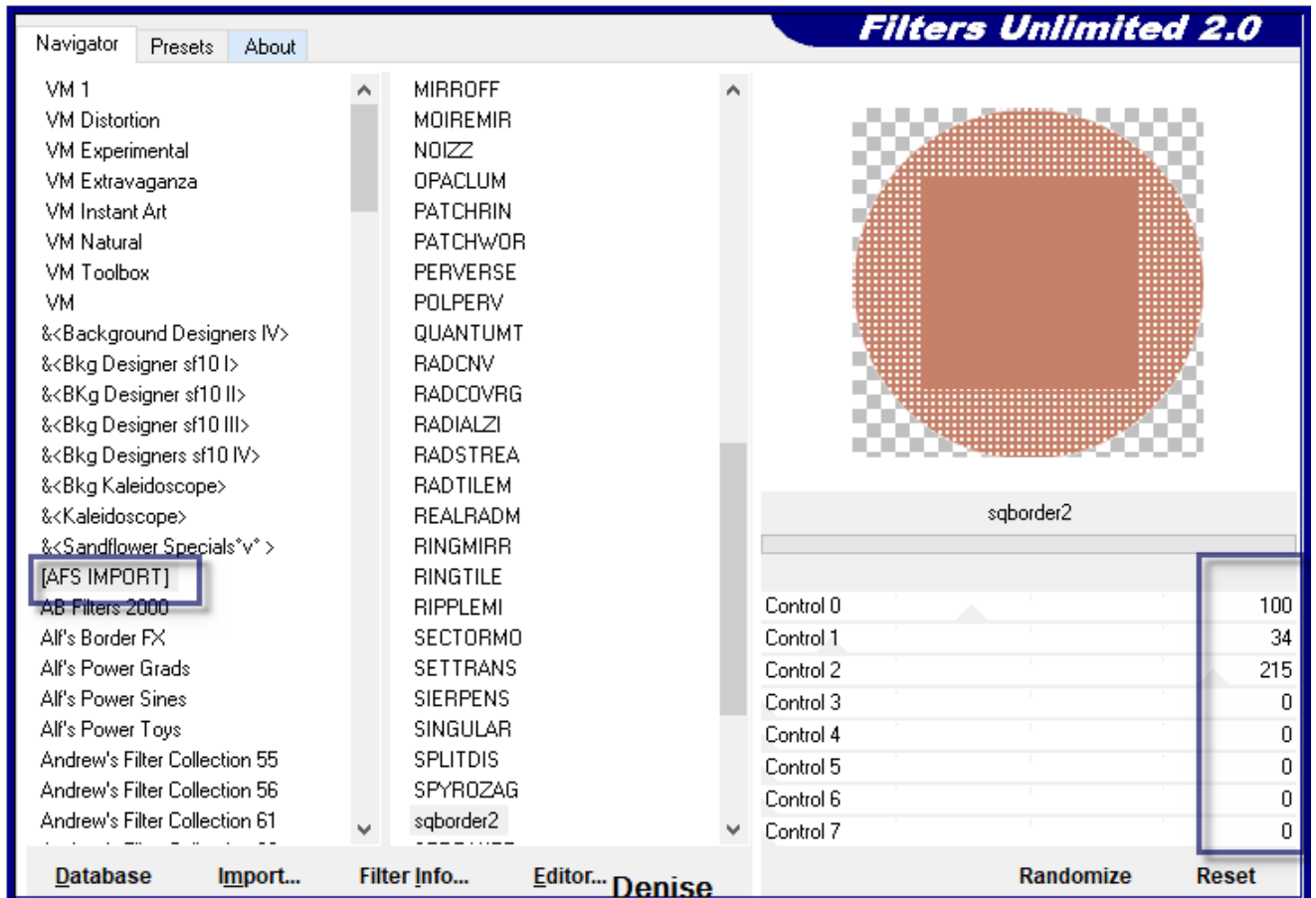
### Step Six:

Layers/New Raster Layer

Selections/Load/Save Selection/Load Selection D.D.Surprise2 from Disk

Flood fill with Foreground Gradient

Effects/Plugins/Filters Unlimited 2.0/(AFS IMPORT)/sqborder2 as follows:



Effects/Plugins/Filters Unlimited 2.0/(AFS IMPORT)/MIRROFF

Selections/Select None

Effects/Plugins/Eye Candy 4000/Shadowlab

Selections/Load/Save Selection/Load Selection D.D.Surprise2.1

Effects/3D Effects/Inner Bevel

Selections/Select None

Effects/Plugins/Eye Candy 4000/Shadowlab

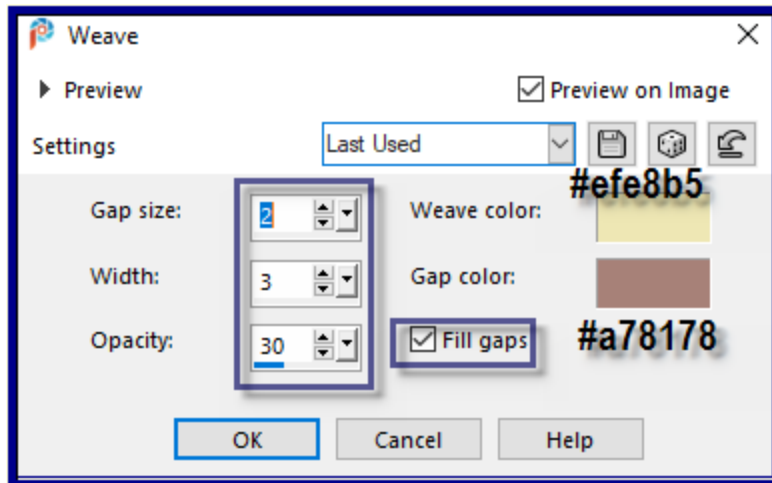
### Step Seven:

Layers/New Raster Layer

Selections/Load/Save Selection/Load Selection D.D.Surprise3 from Disk

Flood fill with Foreground Gradient

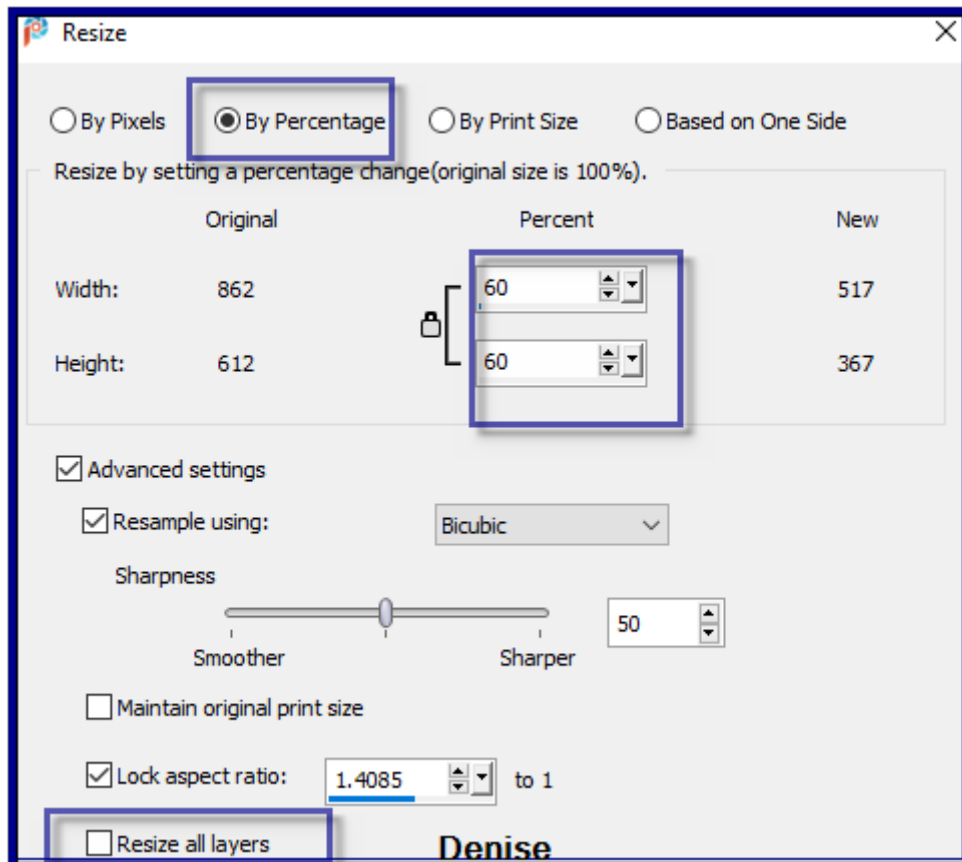
Effects/Texture Effects/Weave as follows:



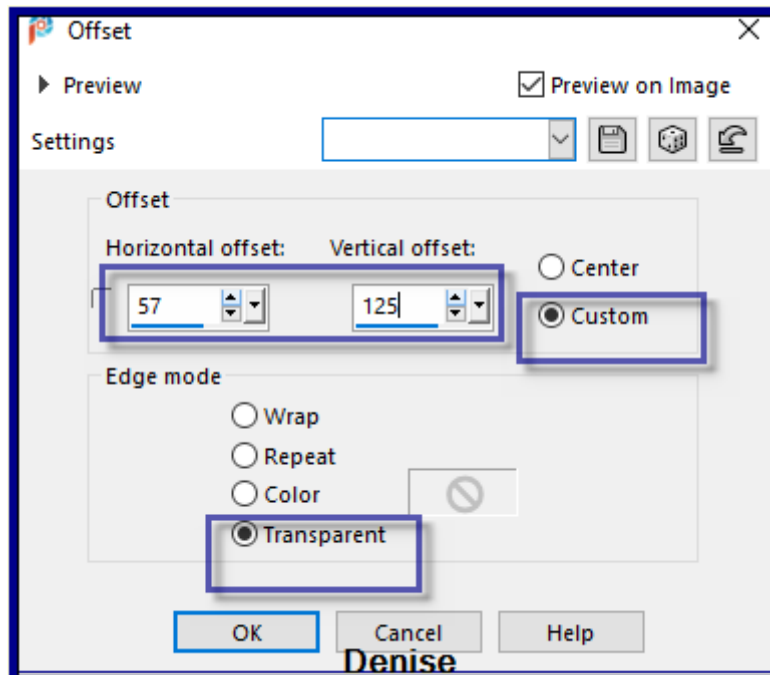
Selections/Select None  
Effects/Plugins/Eye Candy 4000/Shadowlab

### Step Eight:

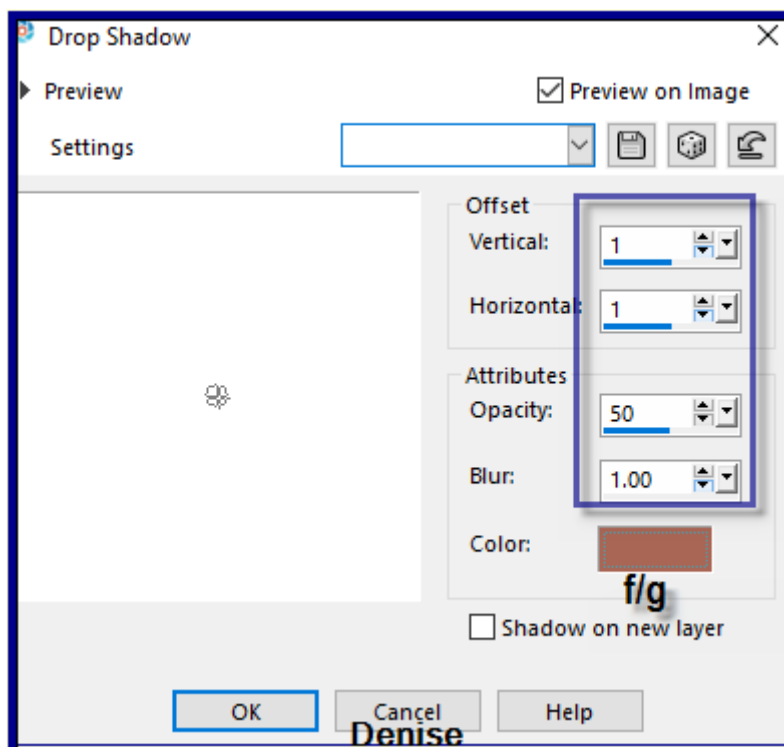
Maximise decos232-sandi.pspimage  
Edit/Copy Edit/Paste as New Layer  
Image/Resize/60% as follows:



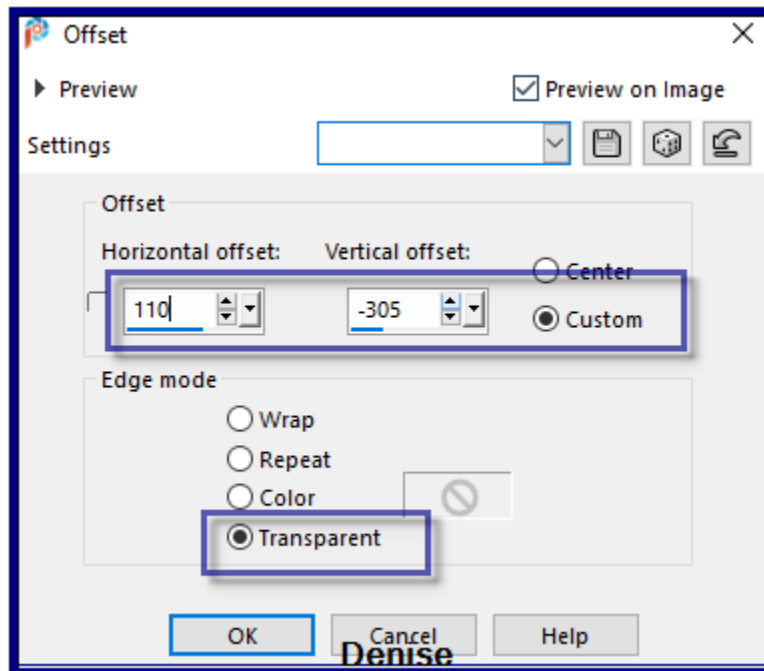
Adjust/Sharpness/Sharpen  
Effects/Image Effects/Offset as follows:



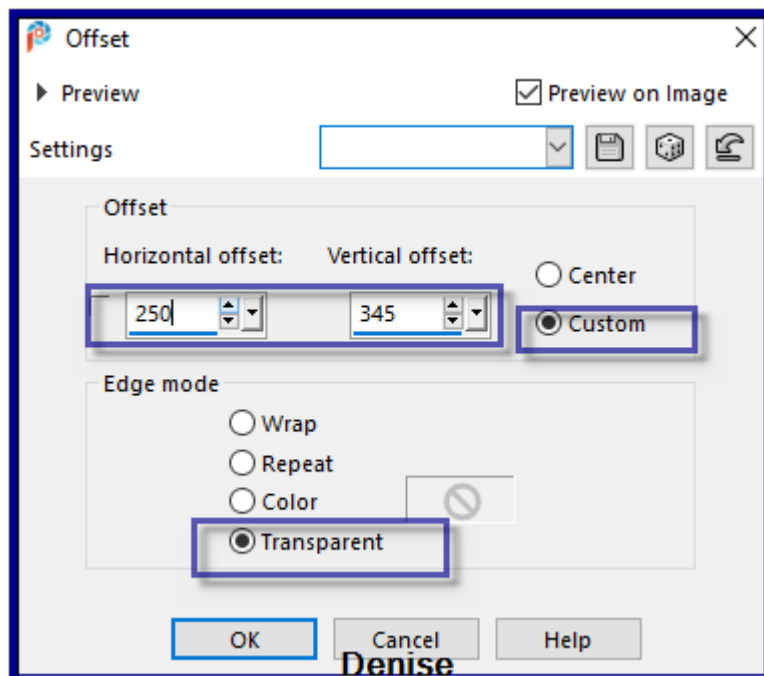
Effects/3D Effects/Drop Shadow as follows:



**Step Nine:**  
Layers/Duplicate  
Image/Resize/90%  
Adjust/Sharpness/Sharpen  
Effects/Image Effects/Offset as follows:

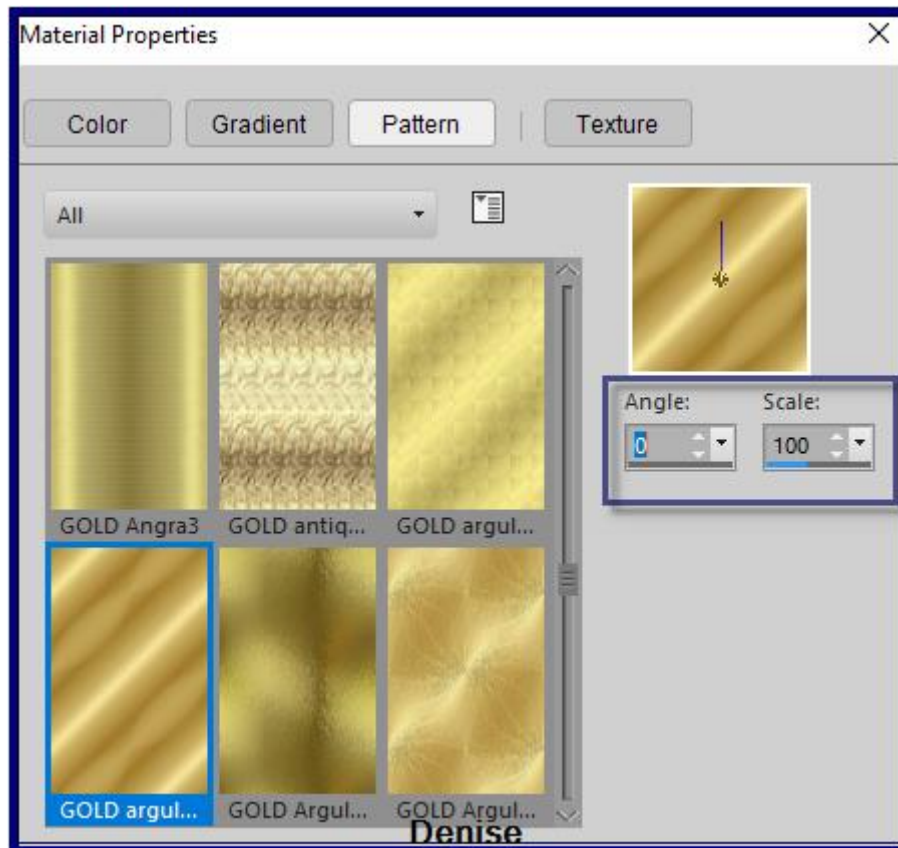


Layers/Duplicate  
Image/Resize/90%  
Adjust/Sharpness/Sharpen  
Effects/Image Effects/Offset as follows:



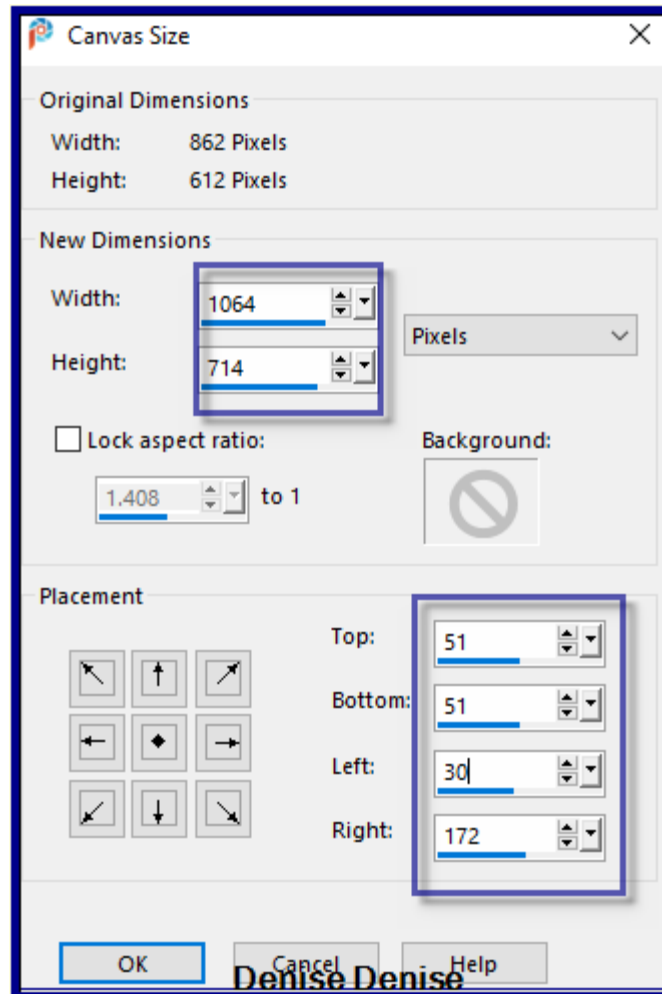
Layers/Merge/Merge All Flatten  
Edit/Copy Edit/Paste as New Image  
Minimise for now

**Step Ten:**  
Image/Add Borders/6 pixels/White  
Select with Magic Wand  
Change Background Colour to Pattern GOLD arguld10.jpg as follows;

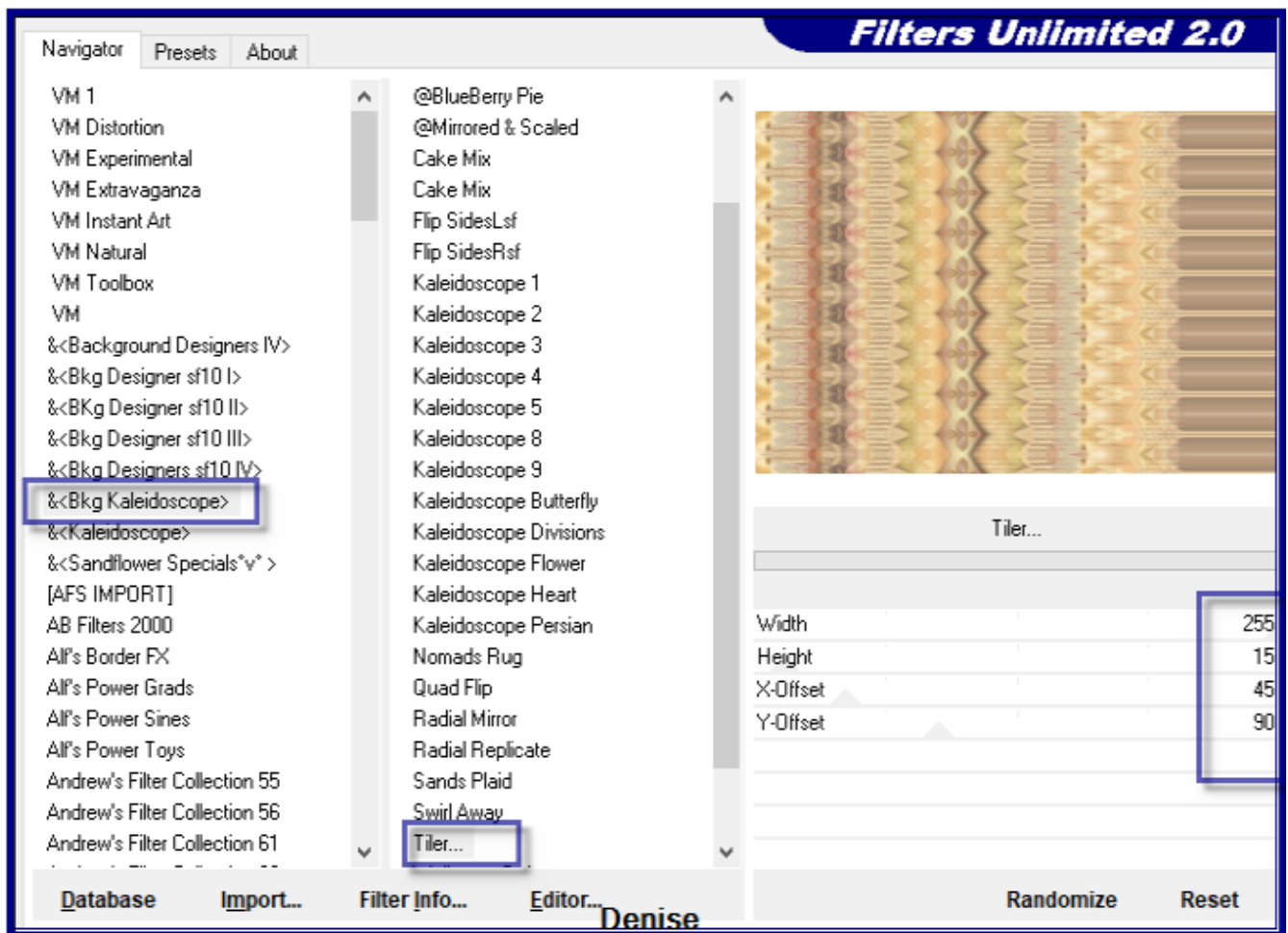


Flood fill with Background Pattern  
Effects/Plugins/Eye Candy 4000/Shadowlab  
Repeat Shadowlab/Direction 135  
Selections/Select None  
Promote Background to Layer  
Image/Canvas Size as follows:





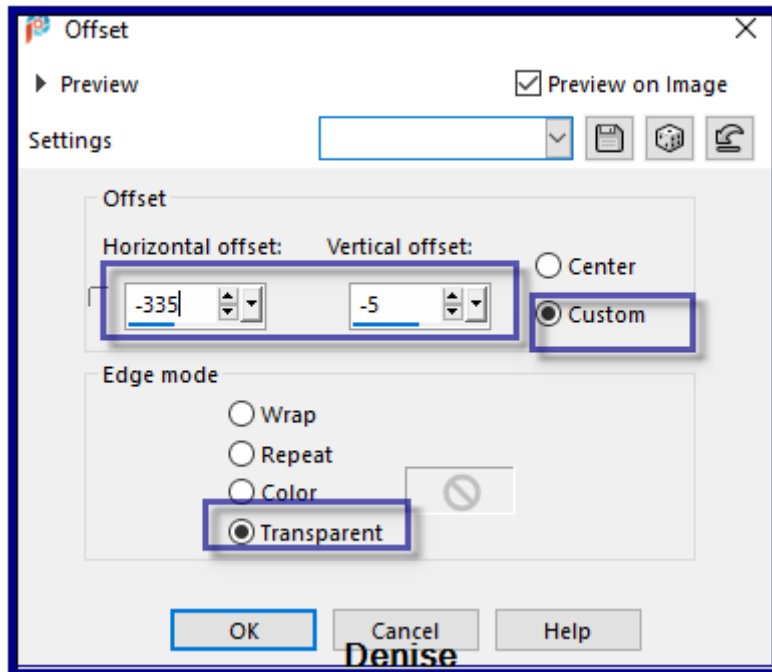
Layers/New Raster Layer  
Layers/Arrange/Move Down  
Selections/Select All  
Maximise image copied before  
Edit/Copy Edit/Paste into Selection  
Effects/Plugins/Filters Unlimited 2.0/&<Bkg Kaleidoscope>/Tiler as follows:



Adjust/Sharpness/Sharpen More  
Keep selected

**Step Eleven:**

Image/Add Borders/6 pixels/White  
Selections/Invert  
Flood fill with Background Pattern  
Effects/Plugins/Eye Candy 4000/Shadowlab  
Repeat Shadowlab/Direction 315  
Selections/Select None  
Maximise little girl-ducks.png  
Edit/Copy Edit/Paste as New Layer  
Carefully remove the tuber's watermark with Eraser Tool  
Image/Resize/85%  
Image/Mirror/Horizontal OR Image/Mirror  
Effects/Image Effects/Offset as follows:



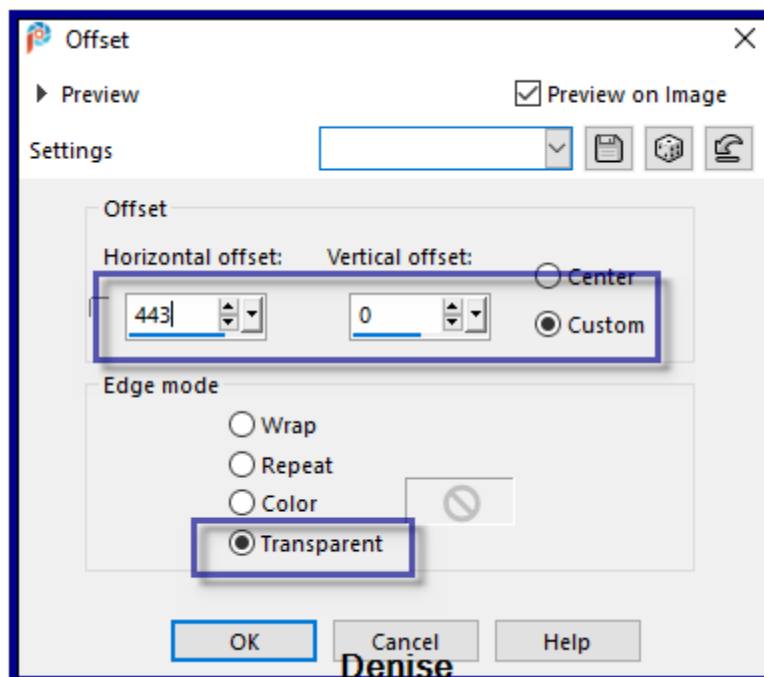
Effects/Plugins/Eye Candy 4000/Shadowlab

### Step Twelve:

Maximise Text.png

Edit/Copy Edit/Paste as New Layer

Effects/Image Effects/Offset as follows:

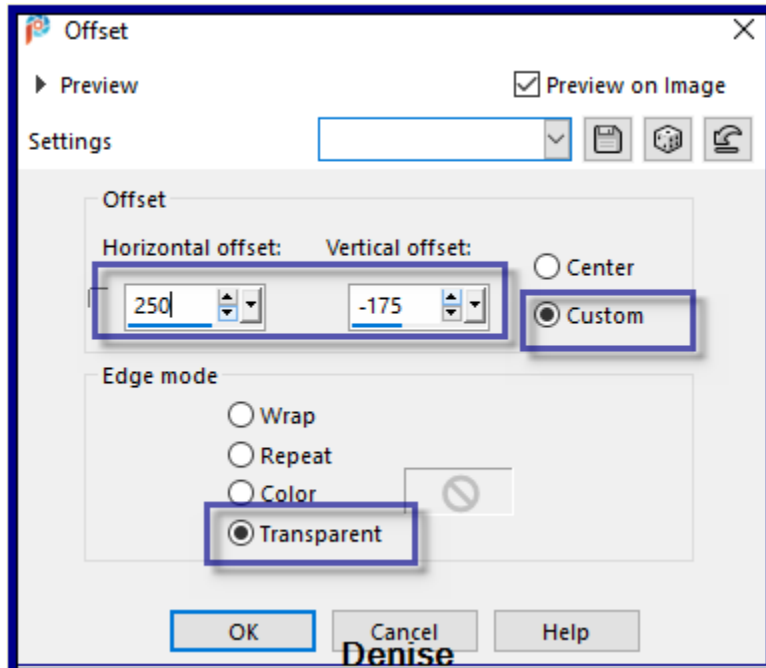


Maximise Vintage Easter Basket by Donna.png

Edit/Copy Edit/Paste as New Layer

Image/Resize/50%

Adjust/Sharpness/Sharpen  
Effects/Image Effects/Offset as follows:

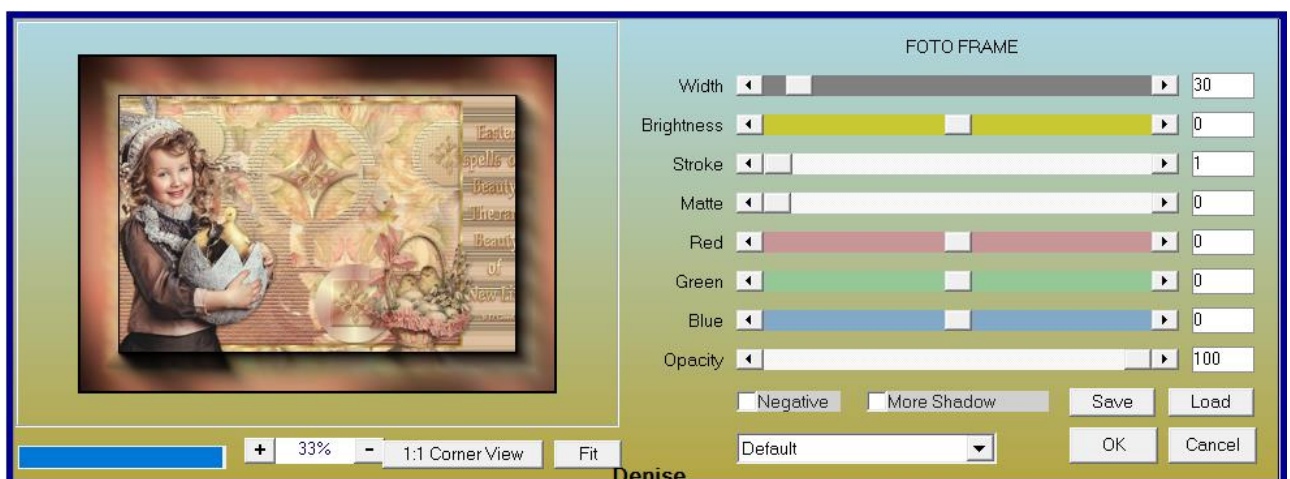


Effects/Plugins/Eye Candy 4000/Shadowlab  
Maximise DeniseDSignature.png  
Edit/Copy Edit/Paste as New Layer  
Place in bottom right hand corner  
Layers/New Raster Layer  
Add your Watermark  
Selections/Select All

Image/Add Borders/50 pixels/Foreground Colour  
Selections/Invert

Effects/Plugins/Filters Unlimited 2.0/Graphics Plus/Cross Shadow Default  
Settings

Effects/Plugins/AAA Frames/Foto Frame as follows:



Selections/Select None  
Layers/Merge All Flatten  
Image/Resize/1000 pixels wide - height will adjust itself  
File/Export/JPEG Optimiser/Compression Value 20

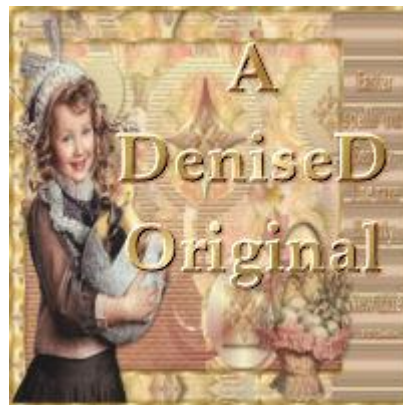
I hope you have enjoyed this tutorial  
A big thank you to the ladies who test my Tutorials  
**TESTERS' RESULTS**



FRAN



BETTY



<https://escapingtosp2.blogspot.com/>