

This tutorial is written by Denise D. on 14th April, 2024  
from my own ideas.

Any resemblance to other tutorials is co-incidental and unintentional.  
If you wish to share my Tutorials, you **MUST** obtain my permission first.  
All I ask is that you advise me and credit for the tutorial is given to me and  
linked to

<http://escapingtopsp2.altervista.org/Home/homeb.html>

If you wish to join my mailing list please go to:

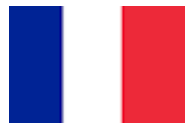
<https://groups.google.com/g/escaping-to-psp3>

Please do not upload any of my completed Tutorial images onto sites  
such as Fotki, Pinterest, Photobucket or similar

**VINTAGE LADIES**



Thank you Inge-Lore for this German Translation



Thank you Michele for this French Translation



Thank you Vera Mendes for this Portuguese Translation



Click on the Box to download Supplies

### **Supplies**

Images:

Viktor Schramm Ladies Sewing Taffeta Gown by Donna.png

1906 Joseph Marius Avy The Celebrated by Donna.png

Brooch Hand Painted Limoges 1 by Donna.png

Celebrated by Donna.png

(this group no longer exists)

AKK~AntiqueCutHeartFrame~112005.png

Mauve Fan.png

Signature.png

Extra images for your choice

Some of these image were obtained from the Internet

If you are the owner of this image, please contact me

so that credit can be given to you

### **Textures:**

fancy.bmp

### **Selection:**

D.D.VintageLadies

### **Patterns:**

Gold (414)

### **Mask:**

AahbabyMask.jpg

3446-illustration-of-a-blank-checkered-frame-border-pvcopy.jpg

### **Plugins:**

Medhi

MuRa's Seamless

MuRa's Meister

Eye Candy 4000

Texture

Xero

Simple  
AAA Frames  
AAA Filters

Found here:



**Notes:**

This Tutorial was created in Corel 2020.... **other versions may need adjustment**

Some of the graphics may be from Free to Use sites or Share Groups.

If you are the creator of one of these please let me know so that appropriate credit can be given.

No infringement of copyright is intended or intentional.

Before opening PSP, download plugins and install

***Some helpful information:***

*You can change the blend mode, opacity and drop shadow, as well as colourise the materials, according to the tubes/colours you are using.*

*When applying the Resize with the All Layers option checked, this will be informed in the tutorial, otherwise, apply the resize with this option unchecked.*

*Remember always to save your work.*

*Whenever you reduce an image, apply Adjust/Sharpness/Sharpen, to maintain the sharpness of the image.*

*Some tools or features have other names in earlier versions of the PSP.*

<u>TOOLS</u>	<u>OLD VERSIONS</u>
Pick Tool	Deformation Tool
Horizontal Mirror	Mirror
Vertical Mirror	Flip

**Please Note:** Offset settings provided in this tutorial may vary according to size of your image.  
Please adjust to suit.

**The settings remain the same throughout this Tutorial unless otherwise stated.**

Set your Foreground colour to #e3c06b

Set your Background colour to #3f828d

**Step One:**

*Place Pattern in PSP Pattern Folder*

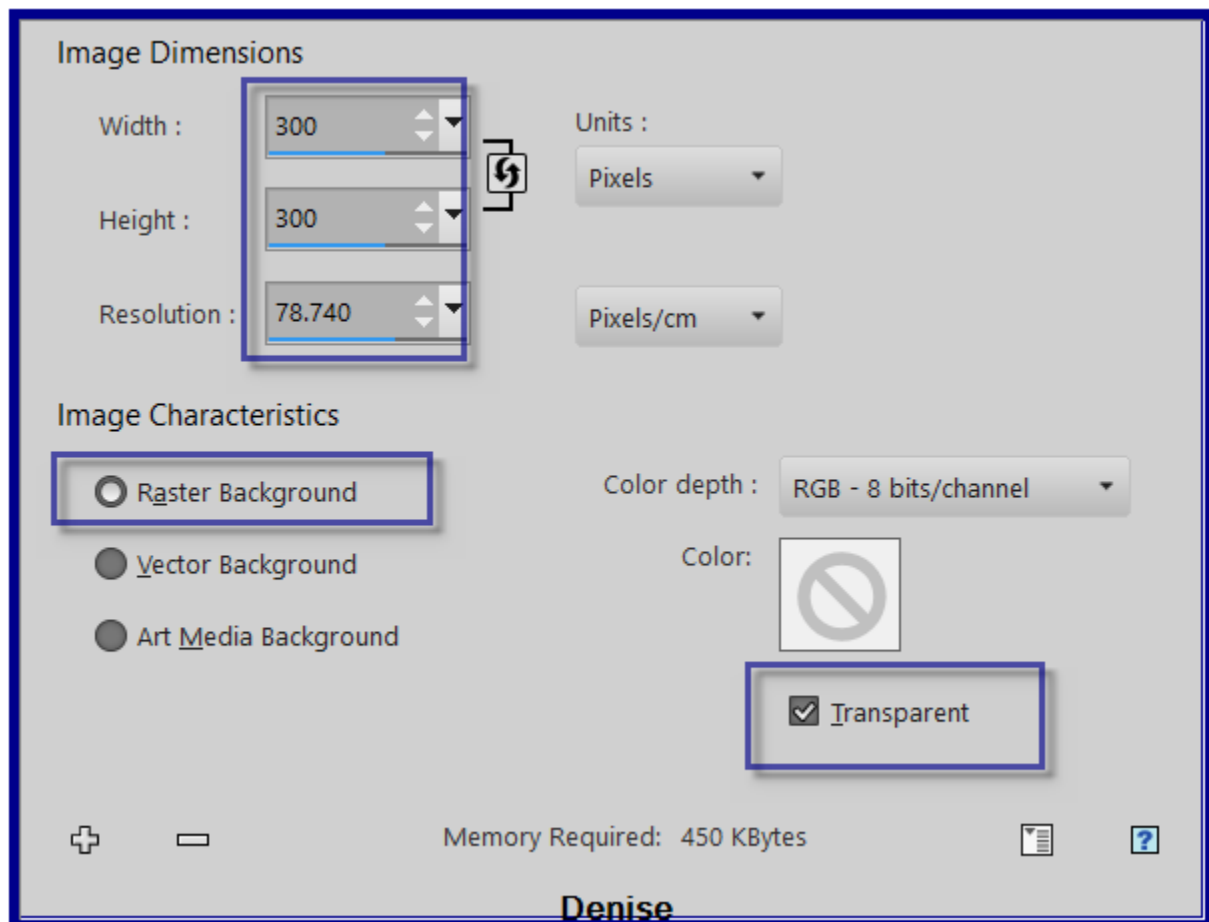
*Place Texture in PSP Texture Folder*

*Place Selection in PSP Selection Folder*

*Place Masks in PSP Mask Folder*

*Open graphics in PSP, duplicate (Shift D) and close the original.*

File/New/New Image 300 pixels x 300 pixels as follows:

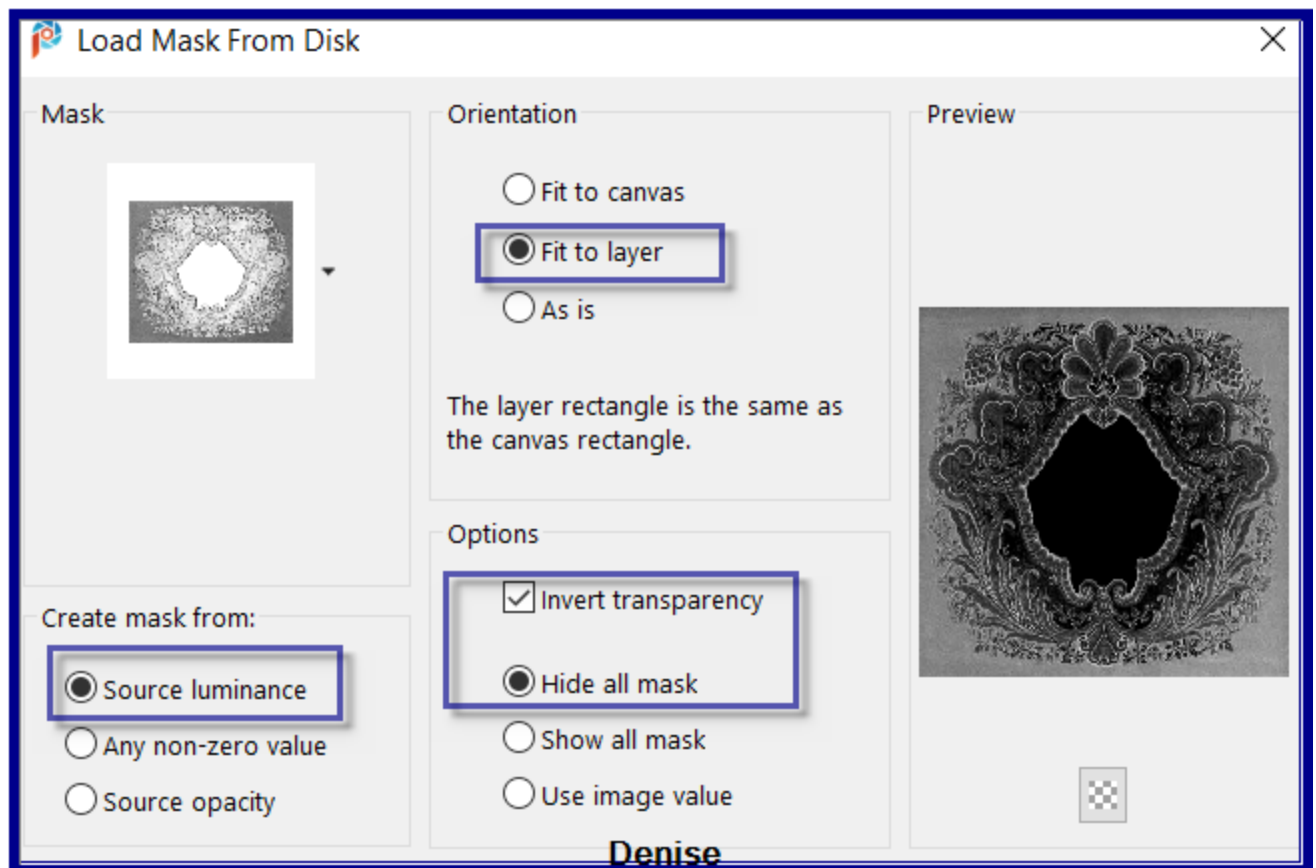


Flood fill with Foreground Colour  
Layers/New Raster Layer  
Flood fill with Background Colour

### Step Two:

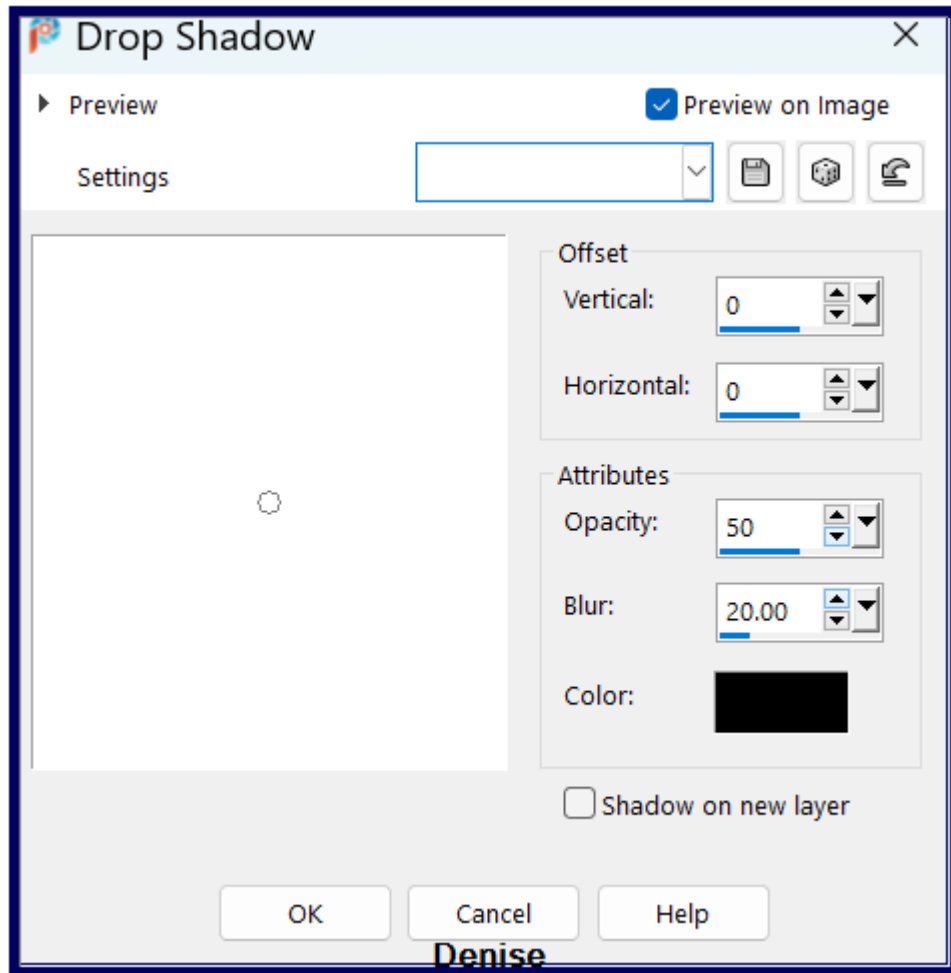
Effect/Layers/Load/Save Mask/Load Mask AahbabyMask.jpg as follows:





**Denise**

Layers/Merge/Merge Group  
Effects/Edge Effects/Enhance  
Effects/Plugins/MuRa's Seamless/Emboss At Alpha/Default Settings  
Effects/3D Effects/Drop Shadow as follows:

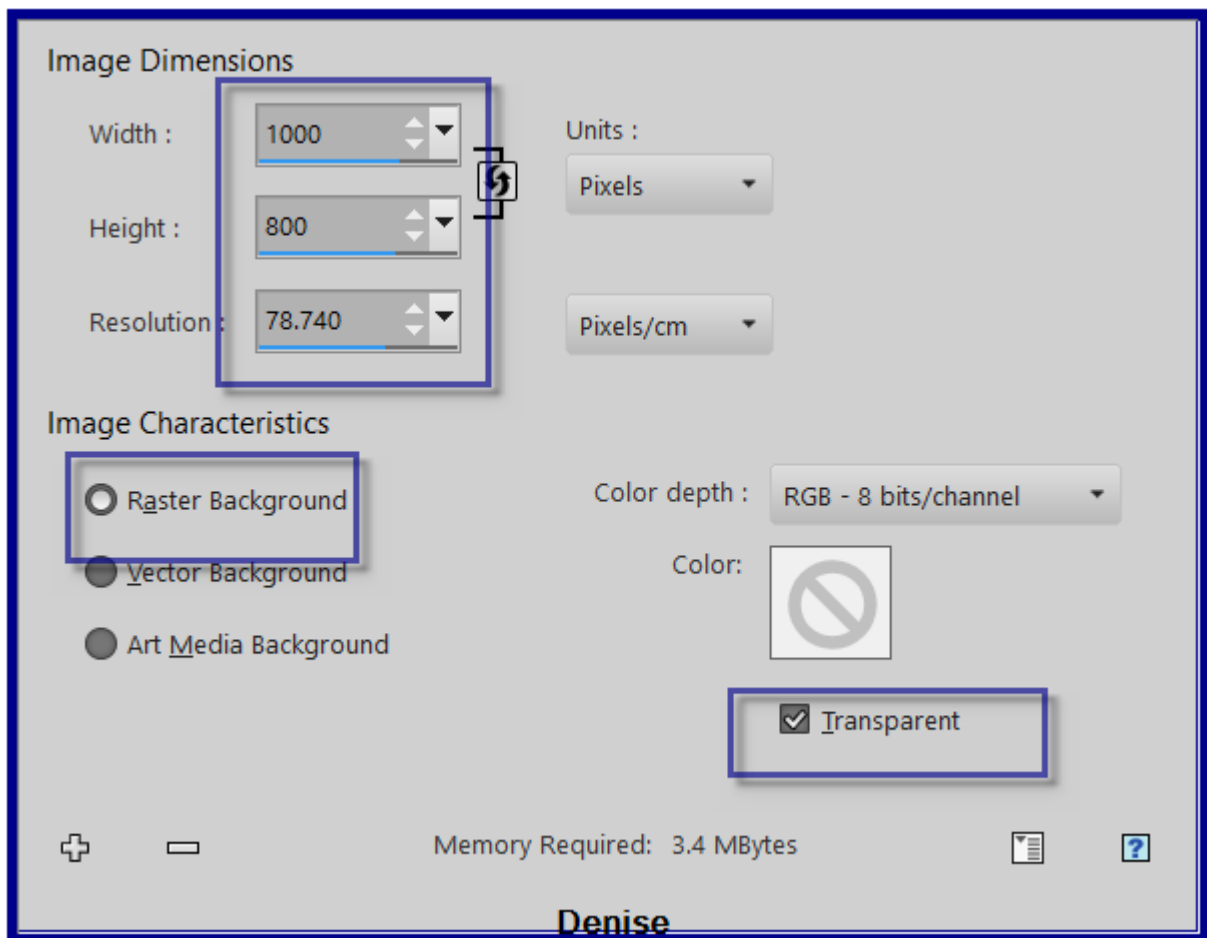


Layers/Merge/Merge Down  
Minimise for now

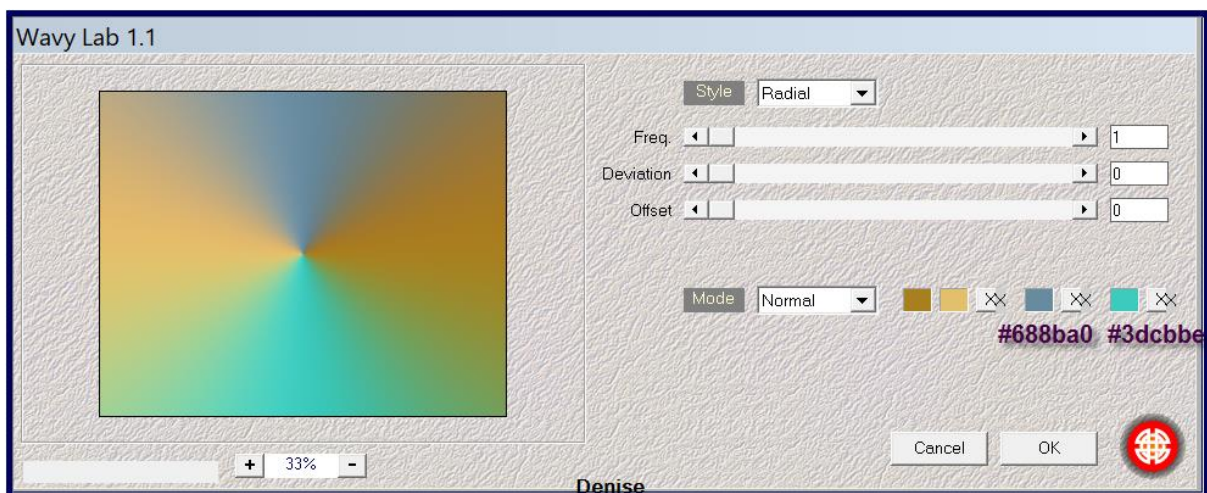
**Step Three:**

File/New/New Image 1000 pixels x 800 pixels as follows:



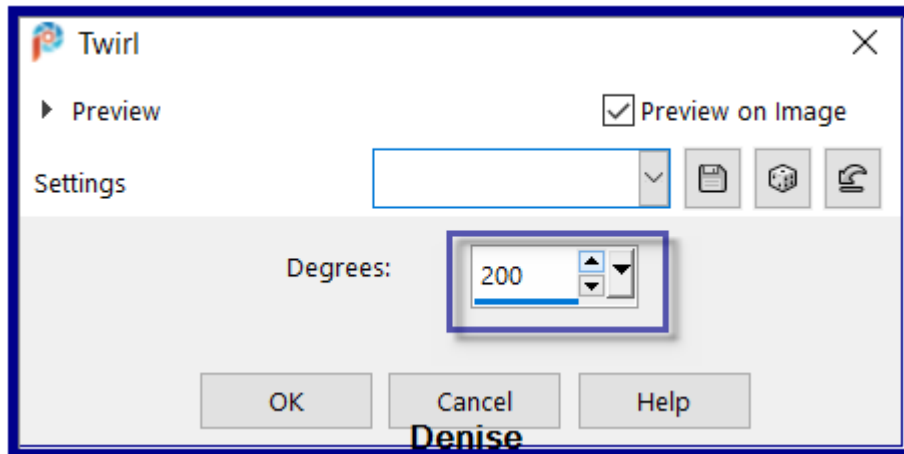


Flood fill with Foreground Colour  
Effects/Plugins/Medhi/Wavy Lab 1.1 as follows:



(Colour 1 and 2 are your foreground/background colours - Colours 3 and 4 can be changed to suit your creation)

Effects/Distortion Effects/Twirl as follows:



#### Step Four:

Selections/Select All

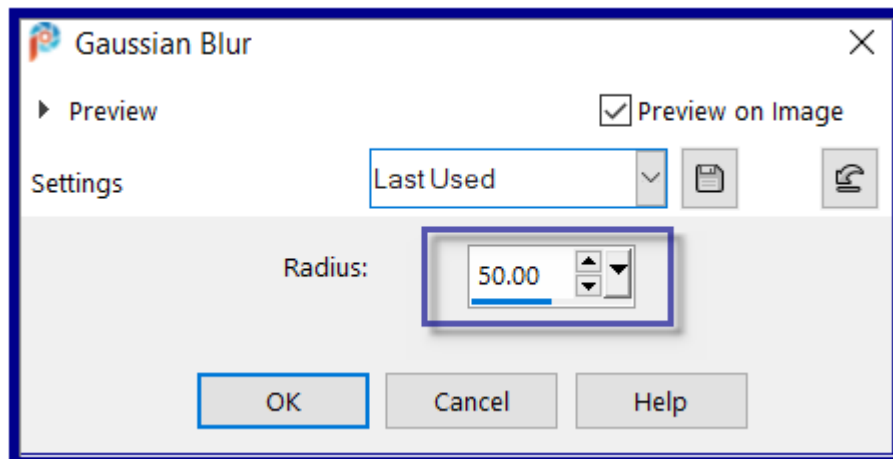
Maximise Viktor Schramm Ladies Sewing Taffeta Gown by Donna.png

Edit/Copy Edit/Paste into Selection

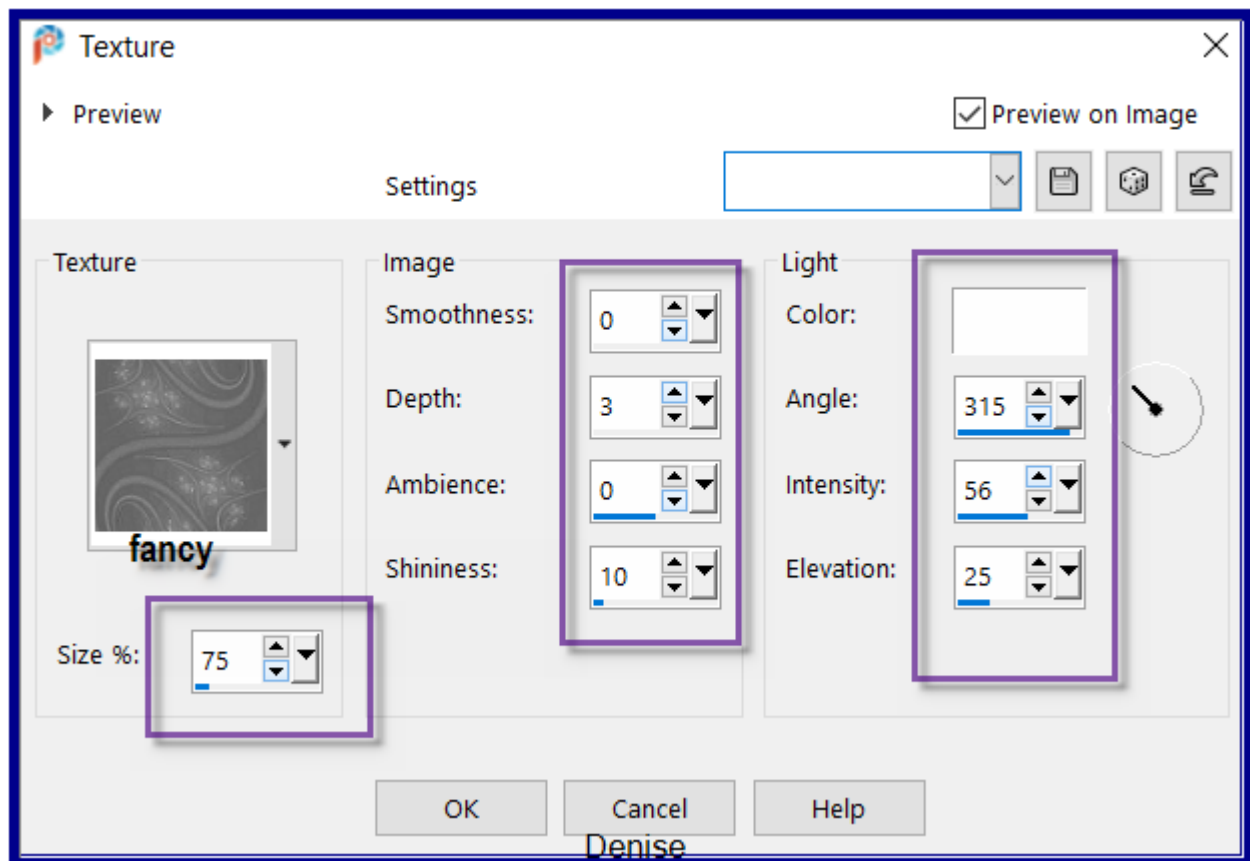
Selections/Select None

Effects/Image Effects/Seamless Tiling/Default Settings

Adjust/Blur/Gaussian Blur as follows:

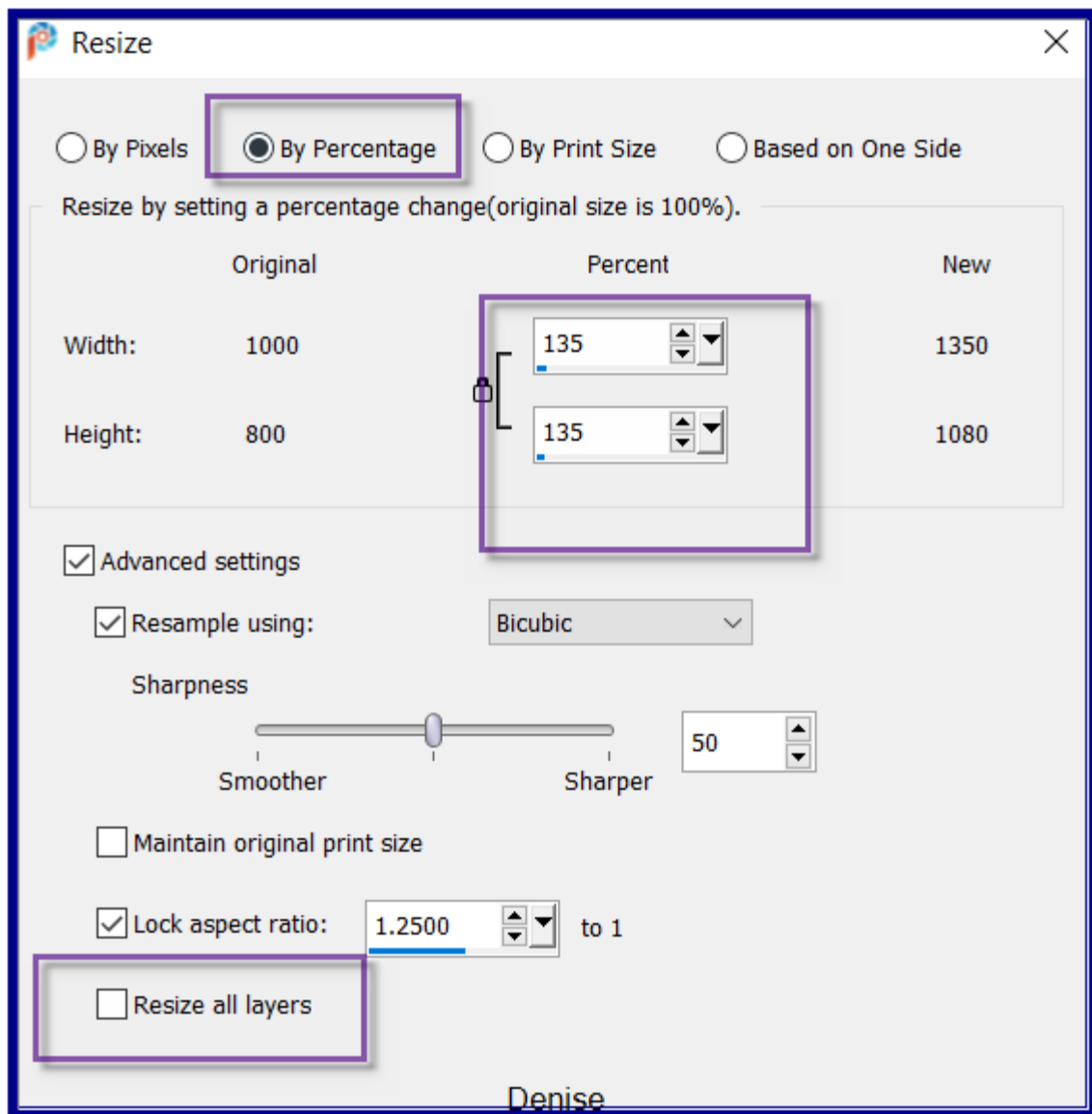


Effects/Texture Effects/Texture/fancy.bmp as follows:

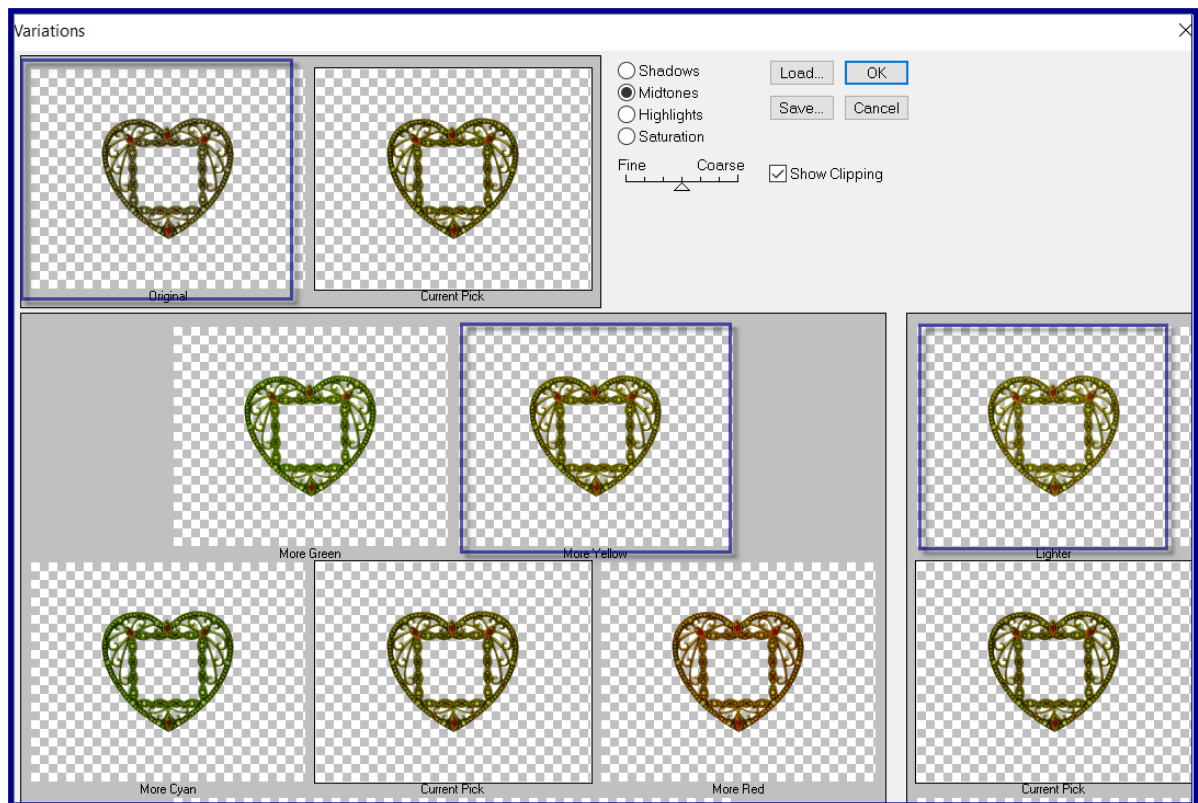


### Step Five:

Maximise AKK~AntiqueCutHeartFrame~112005.png  
Edit/Copy Edit/Paste as New Layer  
Image/Resize/135% as follows:



Adjust/Sharpness/Sharpen  
Effects/Plugins/Adjust/Variations/Original/More Yellow/Lighter as follows:



### Step Six:

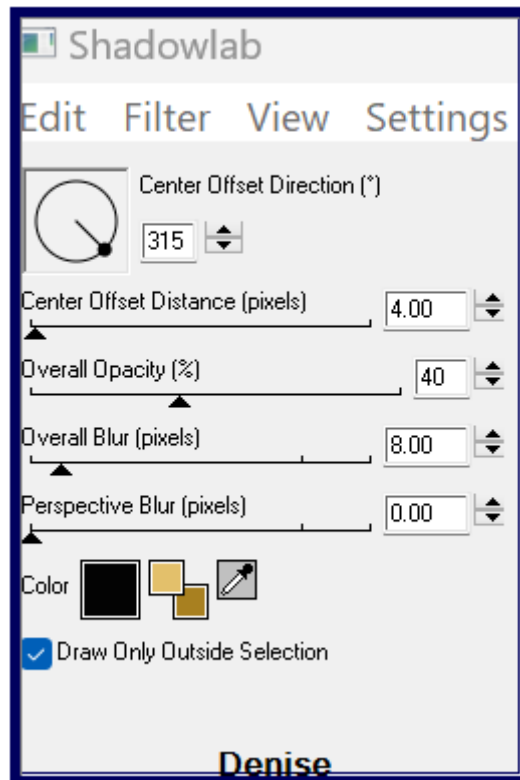
Select the centre of the frame with the Magic Wand as follows:



Selections/Modify/Expand 8 pixels  
 Select Raster 1  
 Edit/Clear  
 Layers/New Raster Layer  
 Maximise mask image made earlier  
 Edit/Copy Edit/Paste into Selection  
 Effects/Plugins/Xero/Clarity as follows:

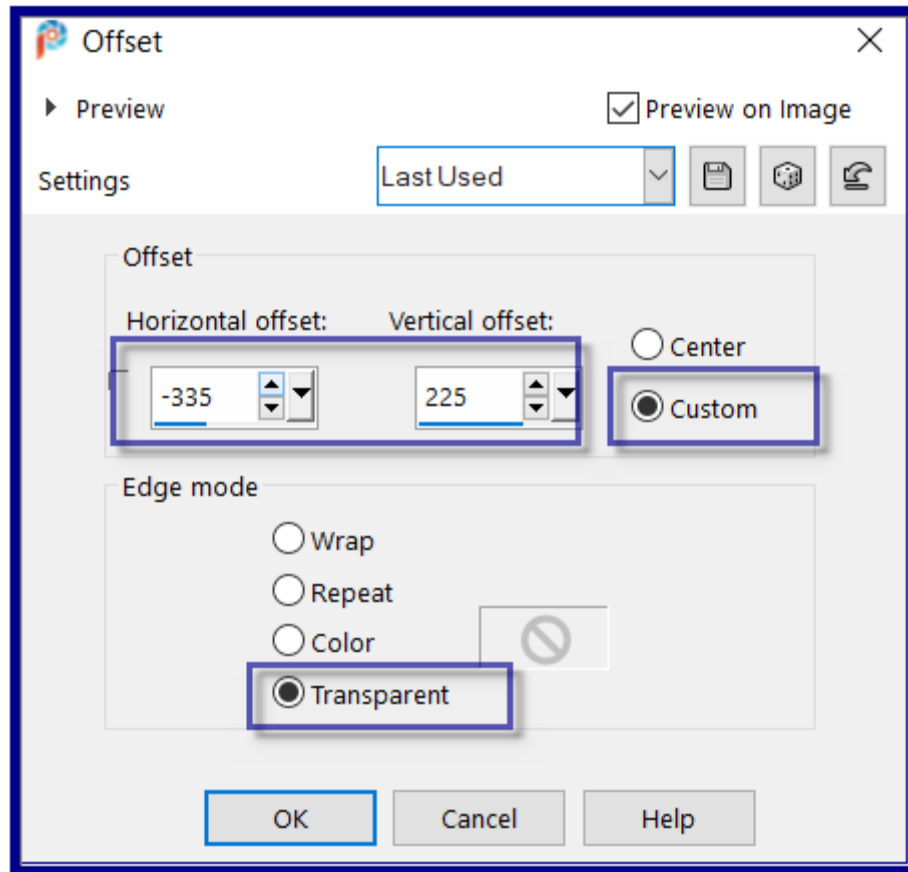


Selections/Select None  
Select Layer at the top  
Layers/Merge/Merge Down  
Effects/Plugging/Eye Candy 4000/Shadowlab as follows:

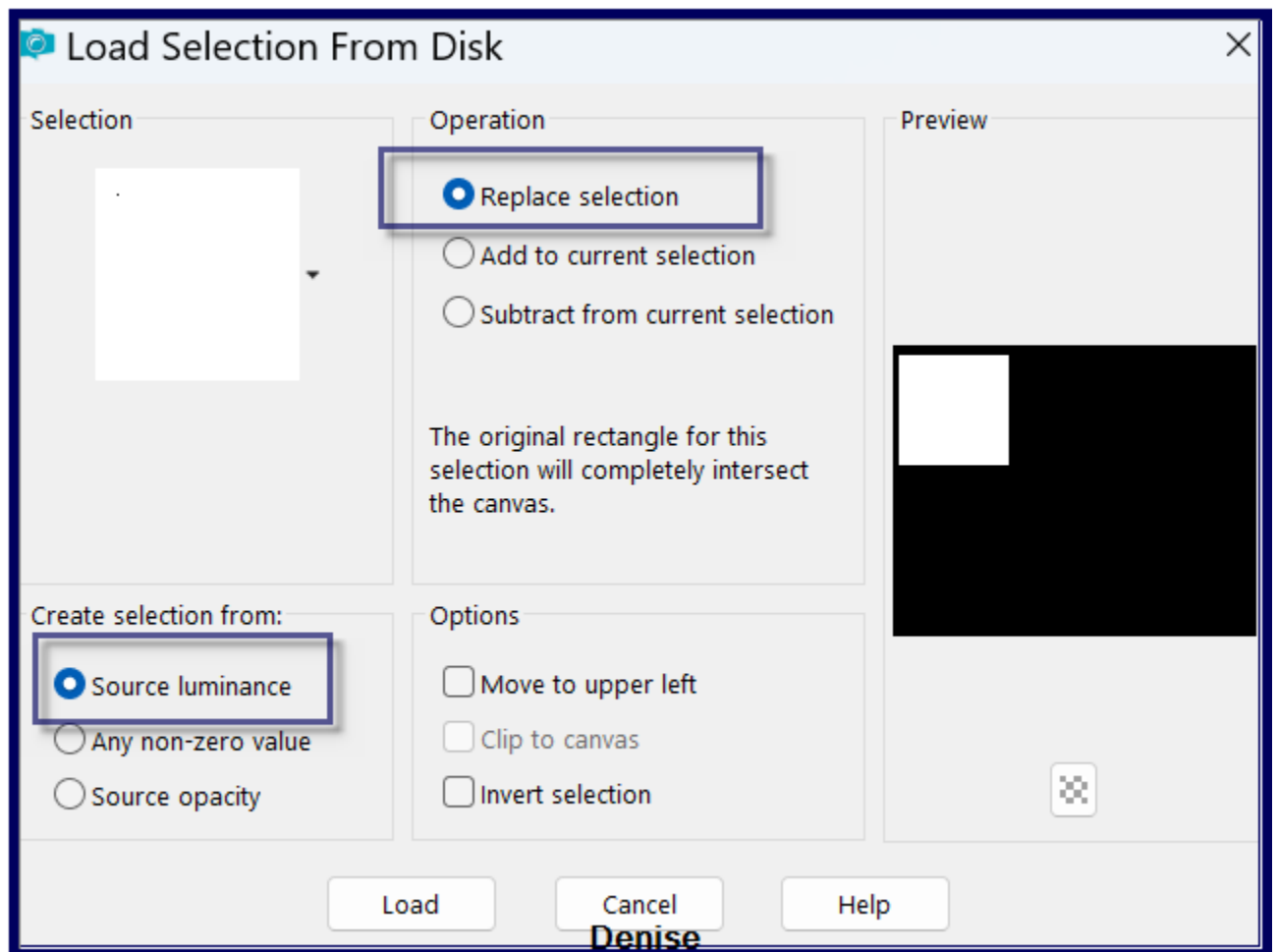


**Step Seven:**  
Edit/Paste as New Layer (image should still be there)  
Image/Resize 90%  
Adjust/Sharpness/Sharpen  
Effects/Image Effects/Offset as follows:



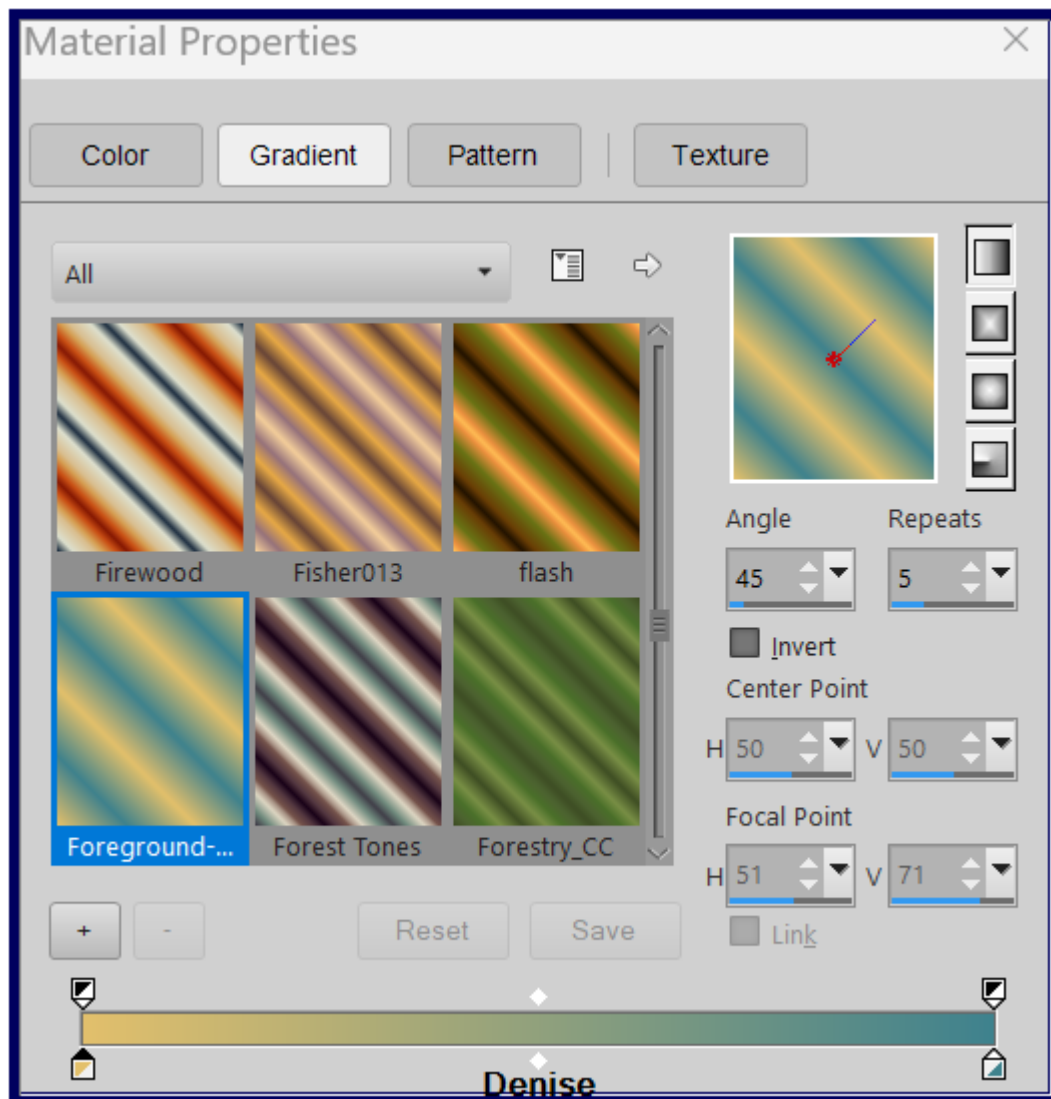


Adjust/Sharpness/Sharpen  
Selections/Load/Save/Load Save Selection D.D.VintageLadies1 from Disk  
as follows:

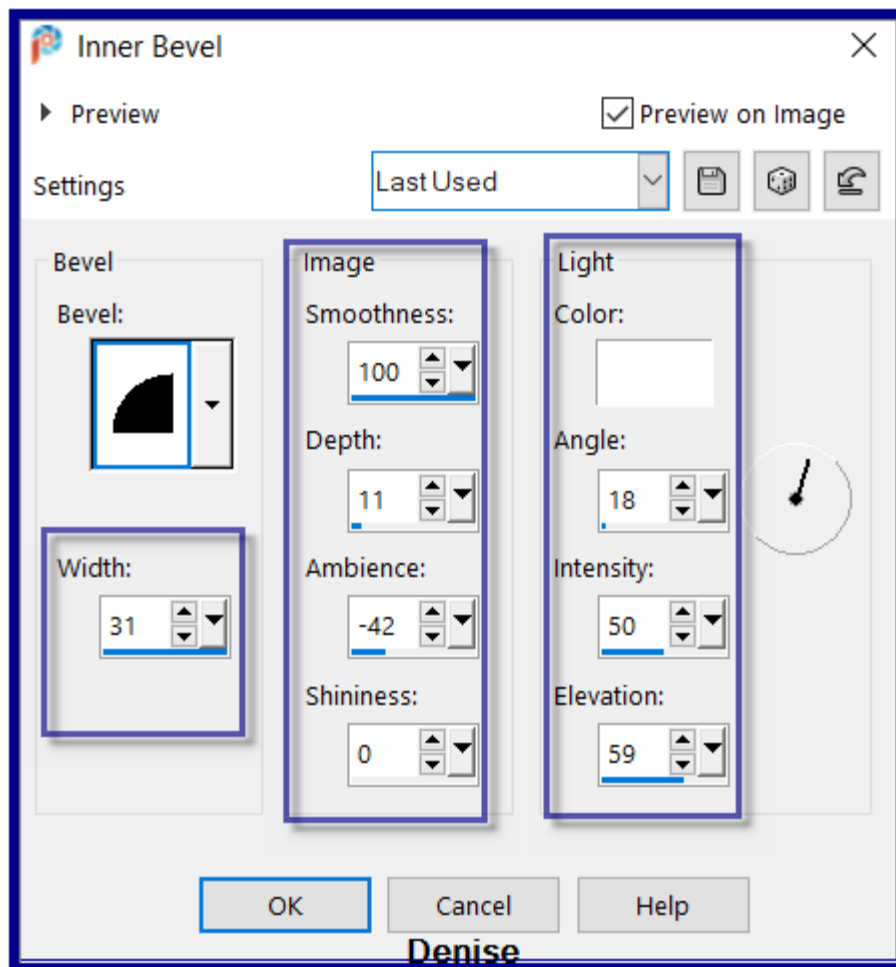


### Step Eight:

Selections/Modify/Select Selection Borders/Both Sides/4 pixels  
Change Background Colour to #3f828d  
Change Foreground Colour to Foreground/Background/Linear Gradient as follows:



Flood fill with Foreground Gradient  
Effects/3D Effects/Inner Bevel as follows:



Selections/Select None

### Step Nine:

Maximise Brooch Hand Painted Limoges 1 by Donna.png

Edit/Copy Edit/Paste as New Layer

Layers/Duplicate

Effects/Image Effects/Offset (same as before)

Effects/Plugins/Eye Candy 4000/Shadowlab

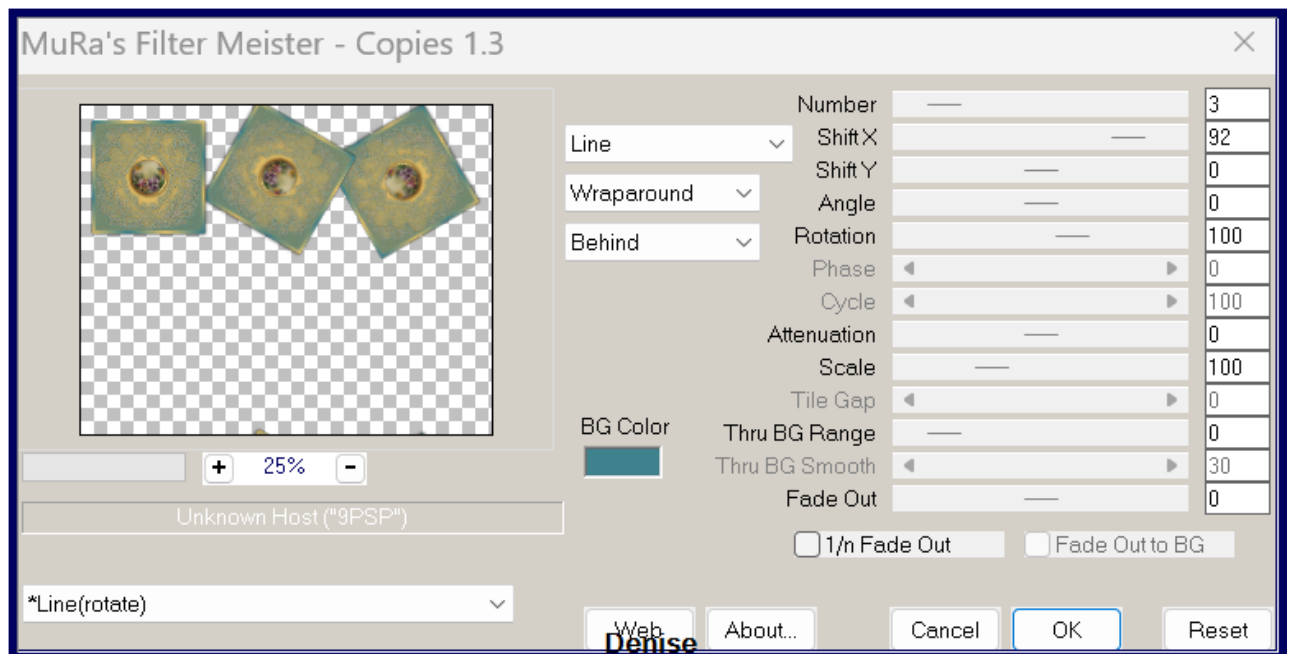
Move this layer down to on top of Raster 2

Layers/Merge/Merge Down

Repeat Shadowlab

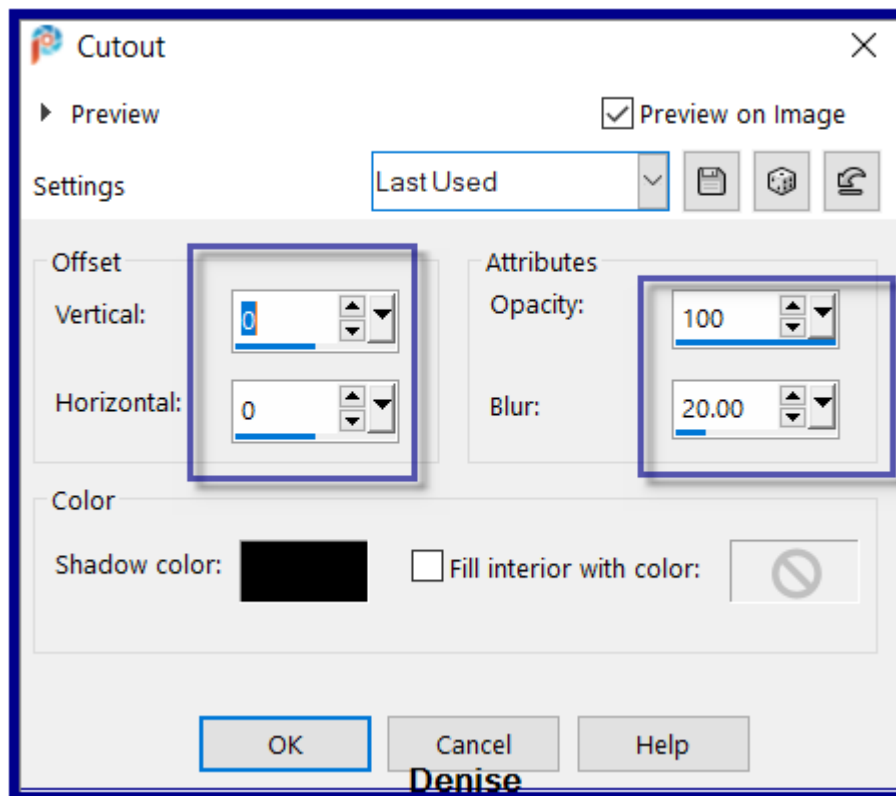
Layers/Arrange/Move Down

Effects/Plugins/MuRa'S Meister/Copies as follows:



Layers/Duplicate  
 Image/Mirror/Horizontal OR Image/Mirror  
 Image/Mirror/Vertical OR Image/Flip  
 Layers/Merge/Merge Visible

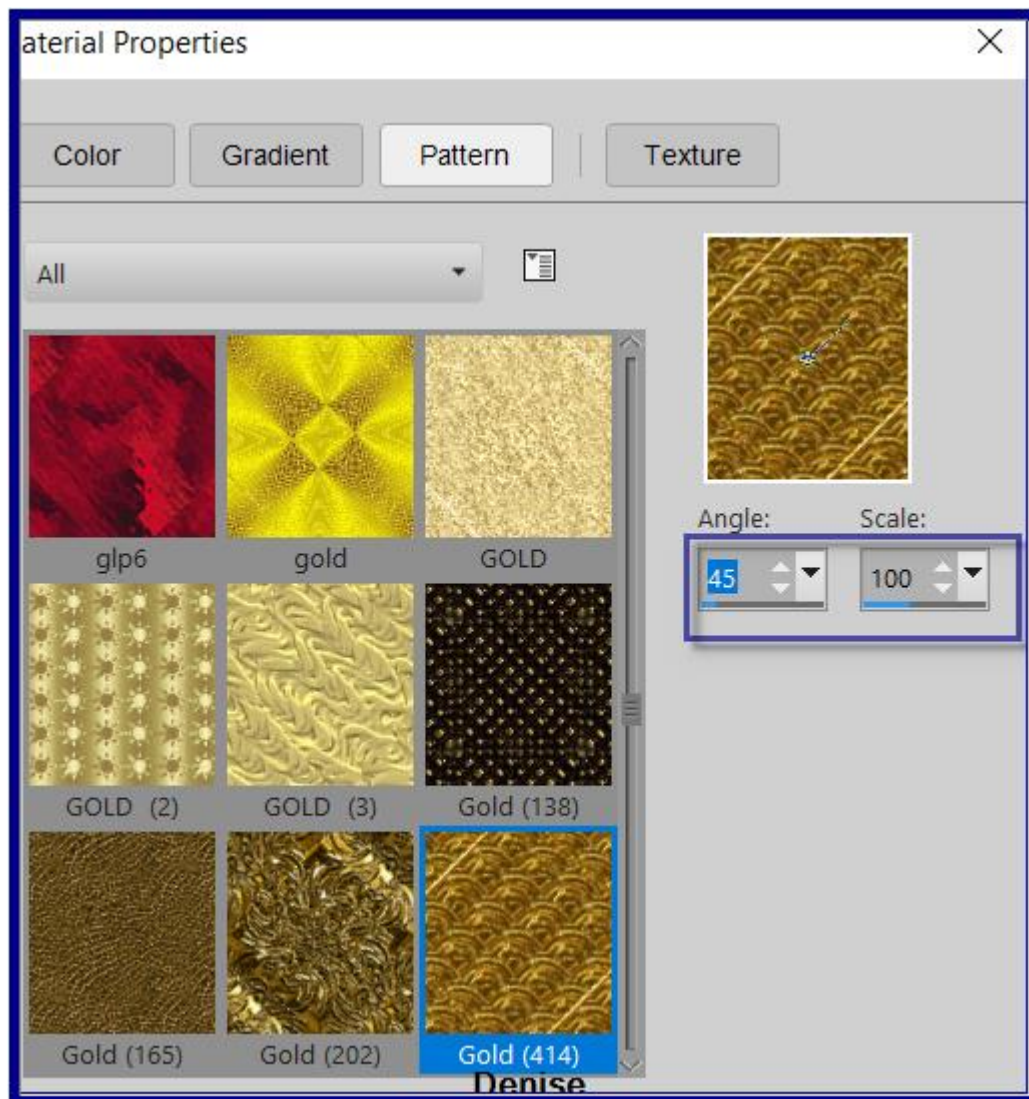
**Step Ten:**  
 Selections/Select All  
 Effects/3D Effects/Cutout as follows:  
 (some versions may need a new layer here)



### Step Eleven:

Image/Add Borders/4 pixels/White  
Selections/Invert

Change Foreground Colour to Pattern Gold (414) as follows:

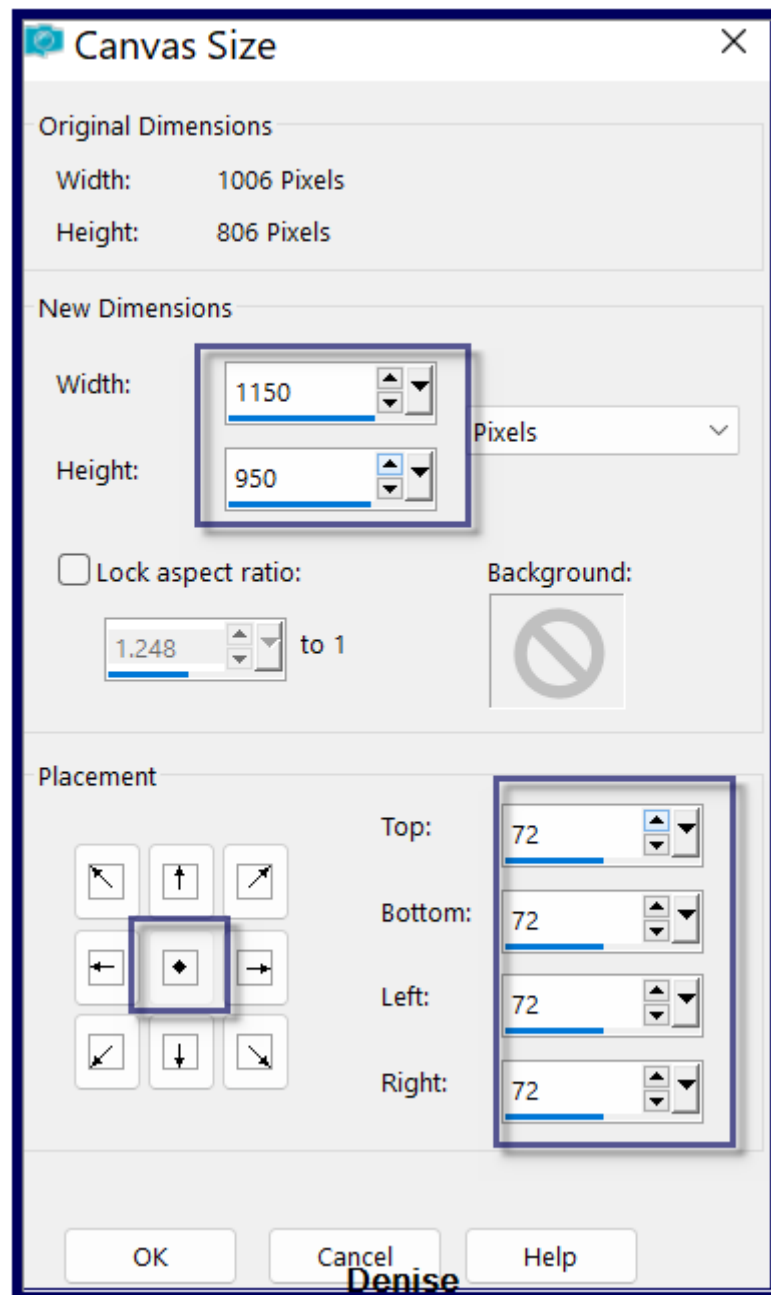


Flood fill with Foreground Pattern  
Selections/Select None

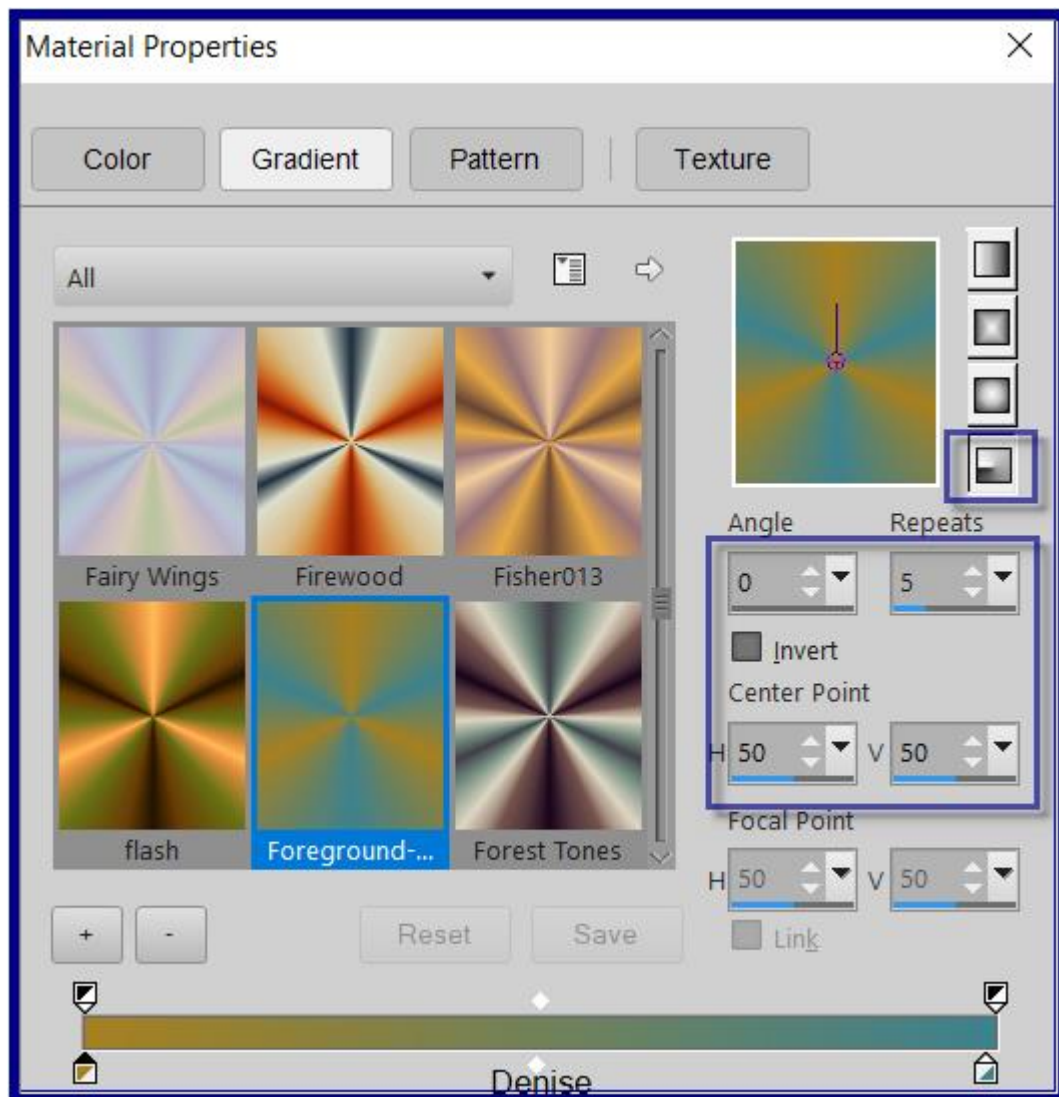
### **Step Twelve:**

Promote Background to Layer  
Image/Canvas Size as follows:





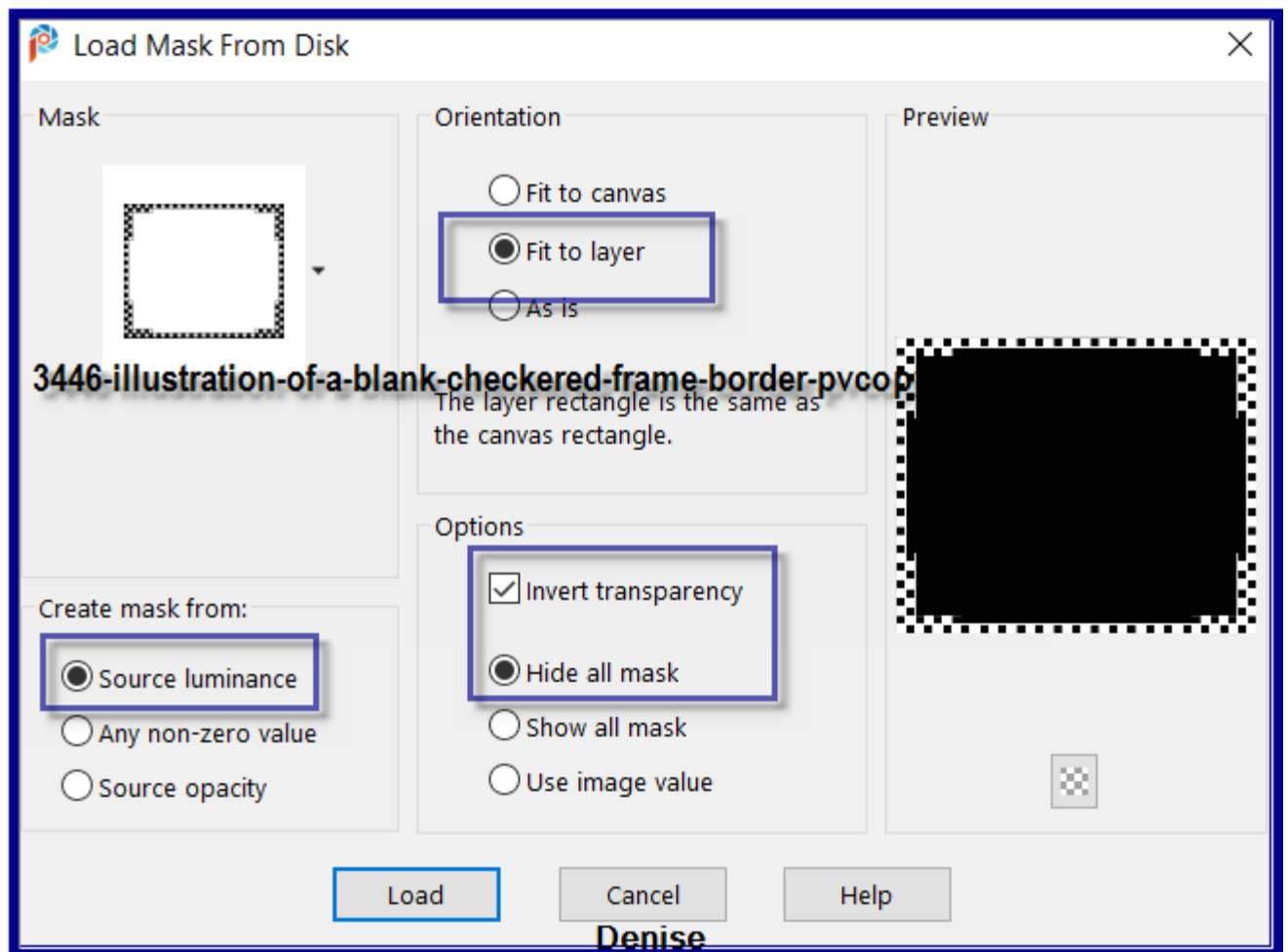
Change Background Colour to #3f828d  
Change Foreground Colour to Foreground/Background/Radial Gradient as follows:



Layers/New Raster Layer  
 Layers/Arrange/Move Down  
 Flood fill with Gradient  
 Effects/Texture Effects/Texture  
 Layer/New Raster Layer  
 Change Background back to Background Pattern  
 Flood fill with Background Pattern

### Step Thirteen:

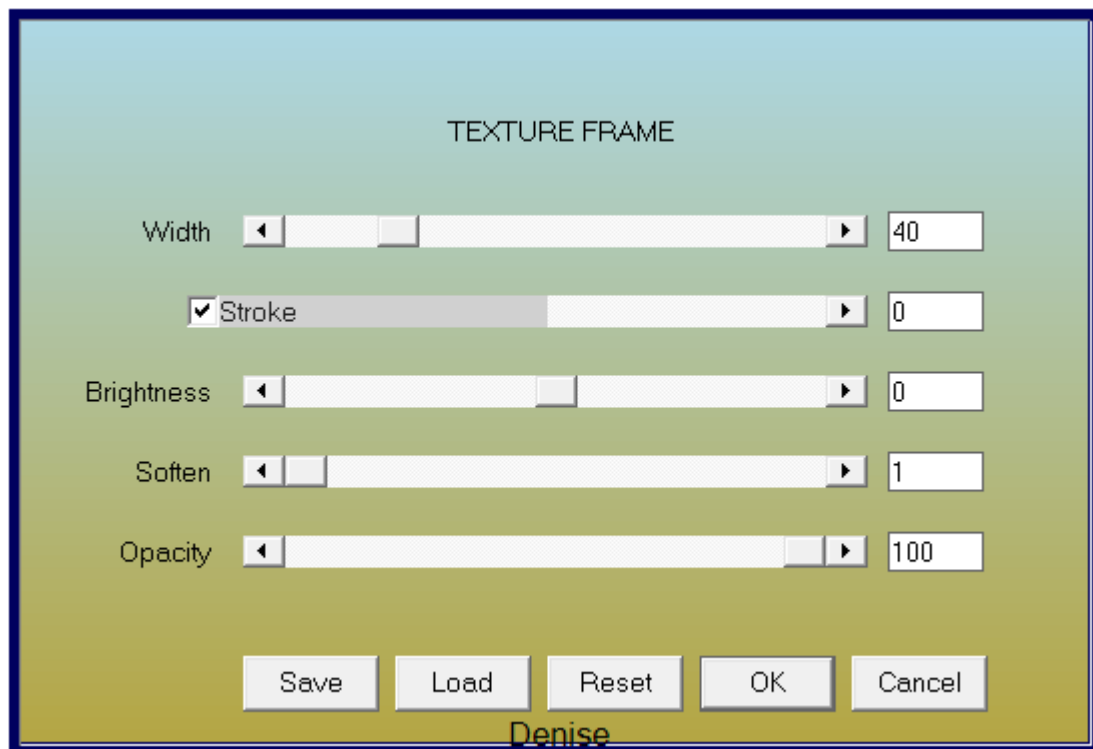
Layers/Load/Save Mask/Load Mask 3446-illustration-of-a-blank-checkered-  
 frame-border-pvcopy from Disk as follows;



Layers/Merge/Merge Group  
Effects/Plugins/Eye Candy 4000/Shadowlab

#### **Step Fourteen:**

Selections/Select All  
Image/Add Borders/50 pixels/White  
Selections/Invert  
Flood fill with Foreground Gradient  
Effects/Plugins/AAA Frames/Texture Frame as follows:



Selections/Select None

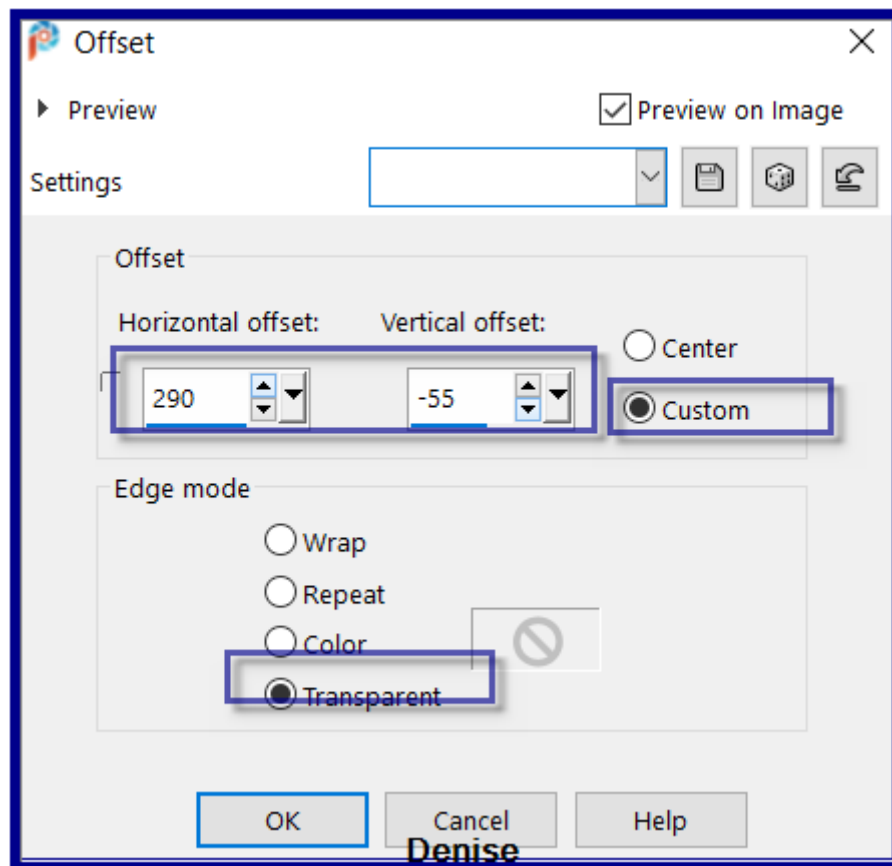
Maximise Viktor Schramm Ladies Sewing Taffeta Gown by Donna.png

Edit/Copy   Edit/Paste as New Layer

Image/Resize/50%

Effects/Plugins/Xero/Clarity

Effects/Image Effects/Offset as follows:



### Step Fifteen:

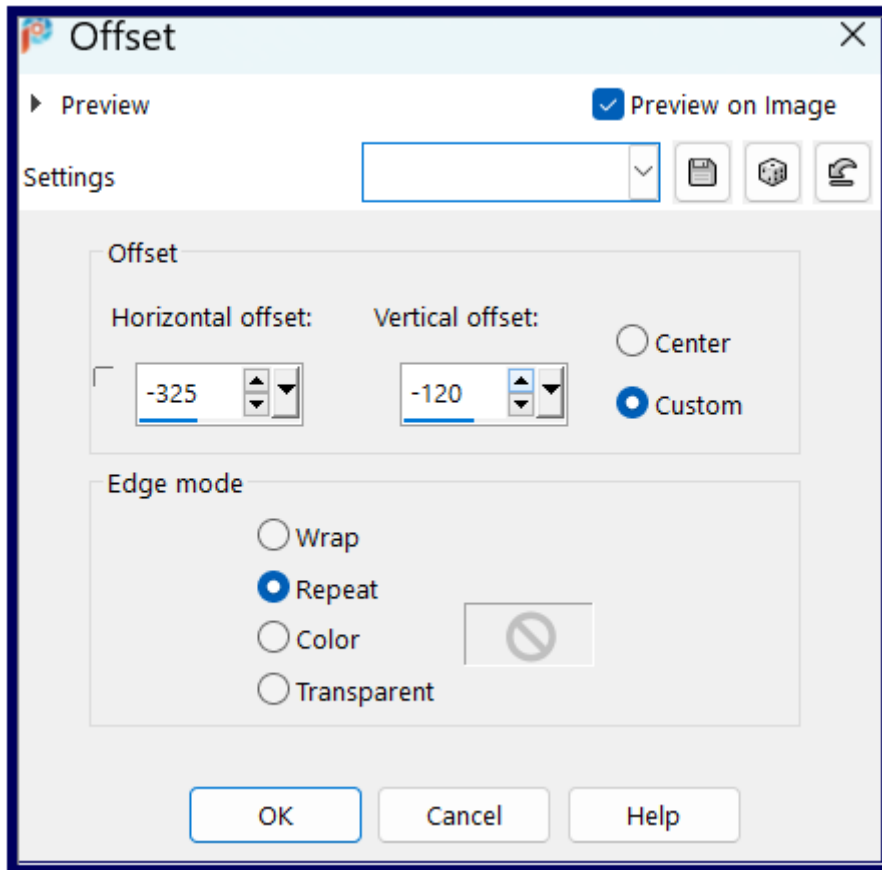
Maximise 1906 Joseph Marius Avy The Celebrated by Donna.png

Edit/Copy Edit/Paste as New Layer

Image/Resize/50%

Effects/Plugins/Xero/Clarity

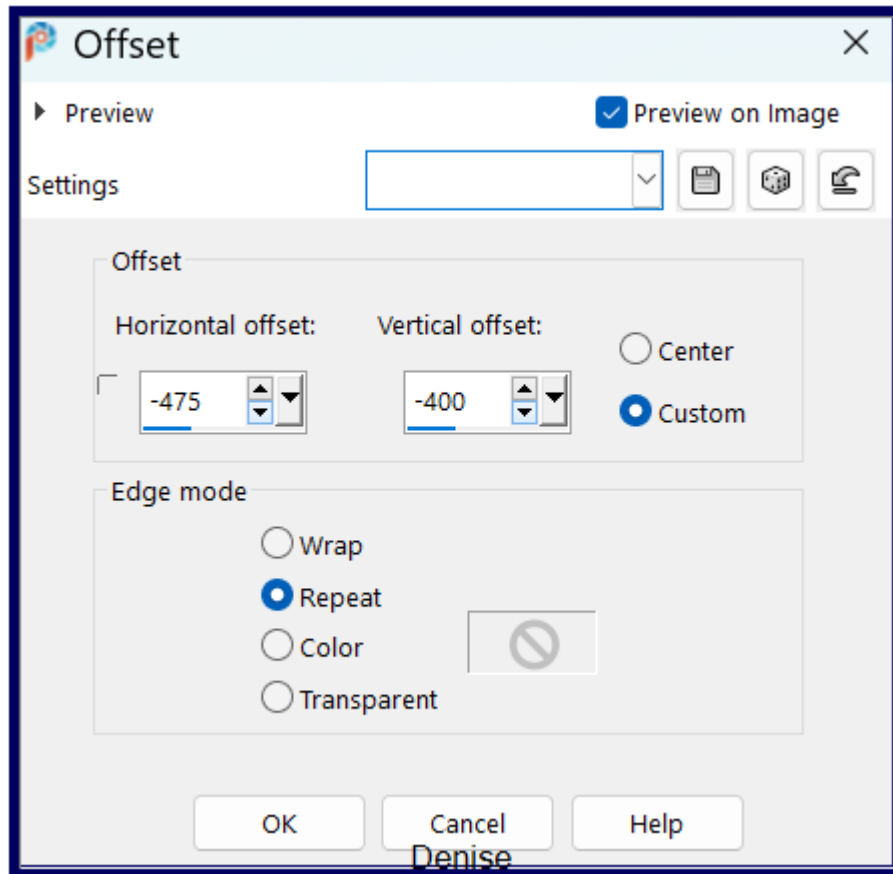
Effects/Image Effects/Offset as follows:



Layers/Merge/Merge Down  
Effects/Plugins/Eye Candy 4000/Shadowlab

**Step Sixteen:**

Maximise Mauve Fan.png  
Edit/Copy Edit/Paste as New Layer  
Image/Resize/75%  
Adjust/Sharpness/Sharpen  
Effects/Image Effects/Offset as follows;



Image/Free Rotate/15 degrees/Left  
 Change Blend Mode to Luminance Legacy or blend of your choice  
 Layers/New Raster Layer  
 Maximise Signature.png  
 Edit/Copy Edit/Paste as New Layer  
 Place at bottom of Layer  
 Add your Watermark  
 Layers/Merge All Flatten  
 Image/Resize/1000 pixels wide - height will adjust itself

**OPTIONAL STEP:**  
**Effects/Plugins/AAA Filters/Custom Filter/Landscape**

File/Export/JPEG Optimiser/Compression Value 20

I hope you have enjoyed this tutorial  
 A big thank you to the ladies who test my Tutorials

TESTERS' RESULTS



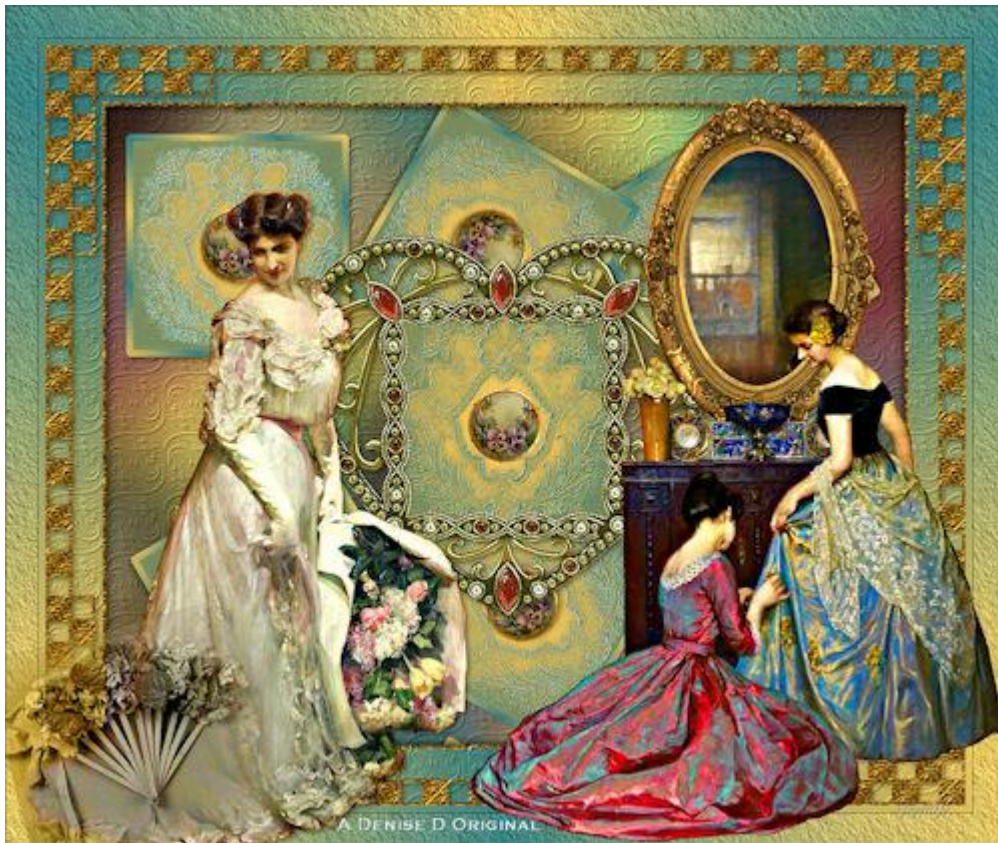


MARIE





BETTY



SJOERTDJE



<https://escapingtosp2.blogspot.com/>