

This tutorial is written by Denise D. on 1st June, 2024
from my own ideas.

Any resemblance to other tutorials is co-incidental and unintentional.
If you wish to share my Tutorials, you **MUST** obtain my permission first.
All I ask is that you advise me and credit for the tutorial is given to me and
linked to

<http://escapingtopsp2.altervista.org/Home/homeb.html>

If you wish to join my mailing list please go to:

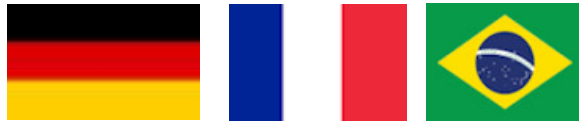
<https://groups.google.com/g/escaping-to-psp3>

Please do not upload any of my completed Tutorial images onto sites
such as Fotki, Pinterest, Photobucket or similar

ODE TO LOVE



<http://escapingtopsp2.altervista.org/OdeToLove/OdeToLove.html>



Thank you Inge-Lore, Michele and Vera Mendes for these Translations



Click on the Box to download Supplies

Supplies

Images:

3613-luzcristina.pspimage

You can join this Group here:

<https://groups.google.com/g/tubeshluzcristina>

Flower1.png

Signature.png

Text.png

Selections:

D.D.OdeToLove

D.D.OdeToLove2

D.D.OdeToLove3

D.D.OdeToLove4

Mask:

Soniamask_0265.jpg

Preset:

D.D.OdeToLove

Plugins:

DSB Flux

Filters Unlimited 2.0/Filter Factory Gallery D

Alien Skin Eye Candy 4000

Filters Unlimited 2.0/Toadies

Filters Unlimited/Convolution Filters

MuRa's Meister

MuRa's Seamless

AAA Filters
Xero

Found here:



Double Click on the icon in your supplies folder to install this Preset in your Plugin.

Notes:

This Tutorial was created in Corel PSP 2020

.... **other versions may need adjustment**

Some of the graphics may be from Free to Use sites or Share Groups.

If you are the creator of one of these please let me know so that appropriate credit can be given.

No infringement of copyright is intended or intentional.

Before opening PSP, download plugins and install

Some helpful information:

You can change the blend mode, opacity and drop shadow, as well as colourise the materials, according to the tubes/colours you are using.

When applying the Resize with the All Layers option checked, this will be informed in the tutorial, otherwise, apply the resize with this option unchecked.

Remember always to save your work.

Whenever you reduce an image, apply Adjust/Sharpness/Sharpen, to maintain the sharpness of the image.

Some tools or features have other names in earlier versions of the PSP.

© Vera Mendes	Tools:	Old versions:
	Pick Tool	deformation
	Horizontal Mirror	Mirror
	Vertical Mirror	flip

Please Note: Offset settings provided in this tutorial may vary according to size of your image.
Please adjust to suit.

The settings remain the same throughout this Tutorial unless otherwise stated.

Set your Foreground colour to #d5c8a3

Set your Background colour to #495075

Step One:

Open Mask and minimise for now

Place Preset in PSP Preset Folder

Place Selections in PSP Selection Folder

Open graphics in PSP, duplicate (Shift D) and close the original.

Files/New/New Raster Layer 1000 pixels by 700 pixels as follows:

Image Dimensions

Width : 1000 Units : Pixels

Height : 700

Resolution : 118.110 Pixels/cm


Image Characteristics

☐ Raster Background

☐ Vector Background

☐ Art Media Background

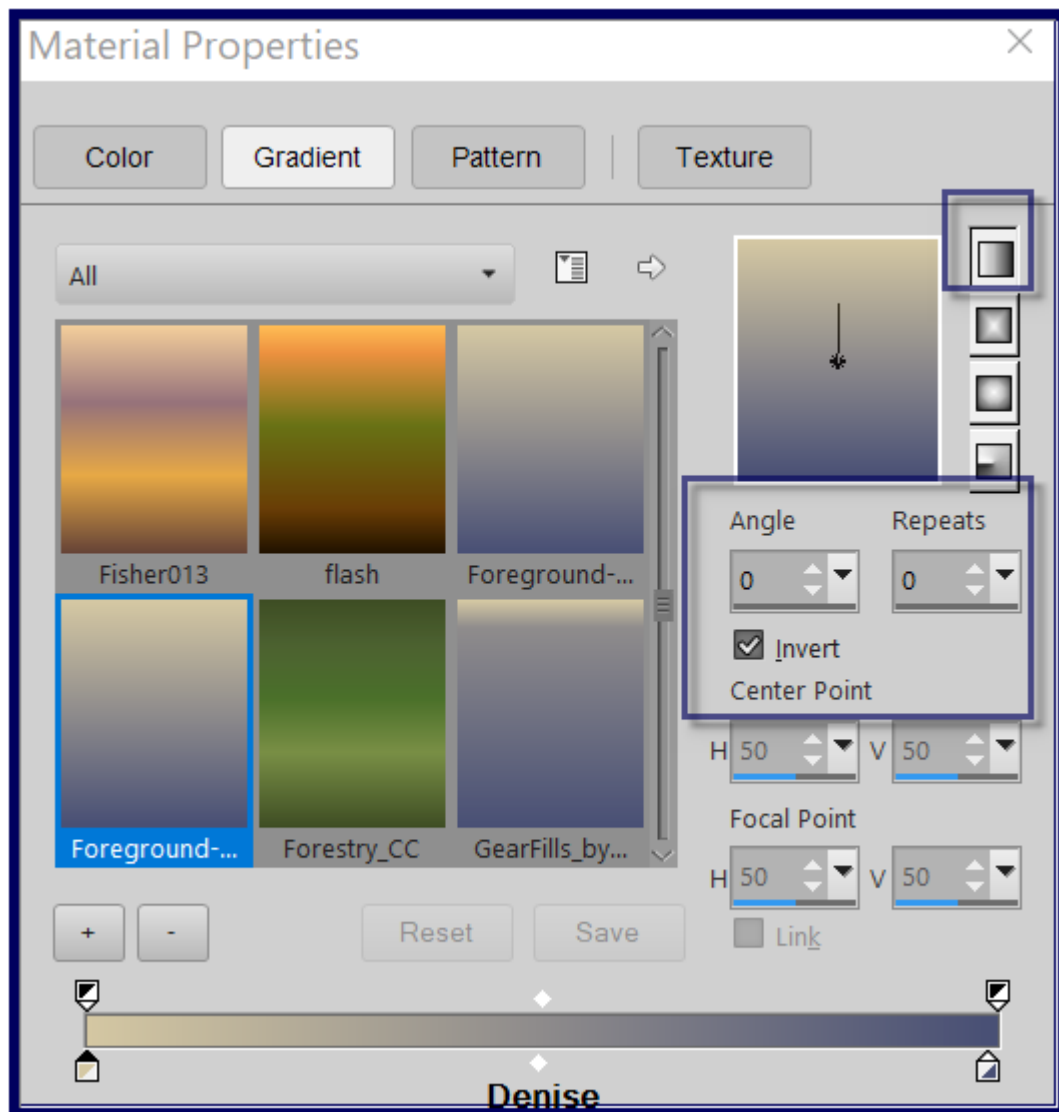
Color depth : RGB - 8 bits/channel

Color: 

☒ Transparent

Memory Required: 2.9 MBytes

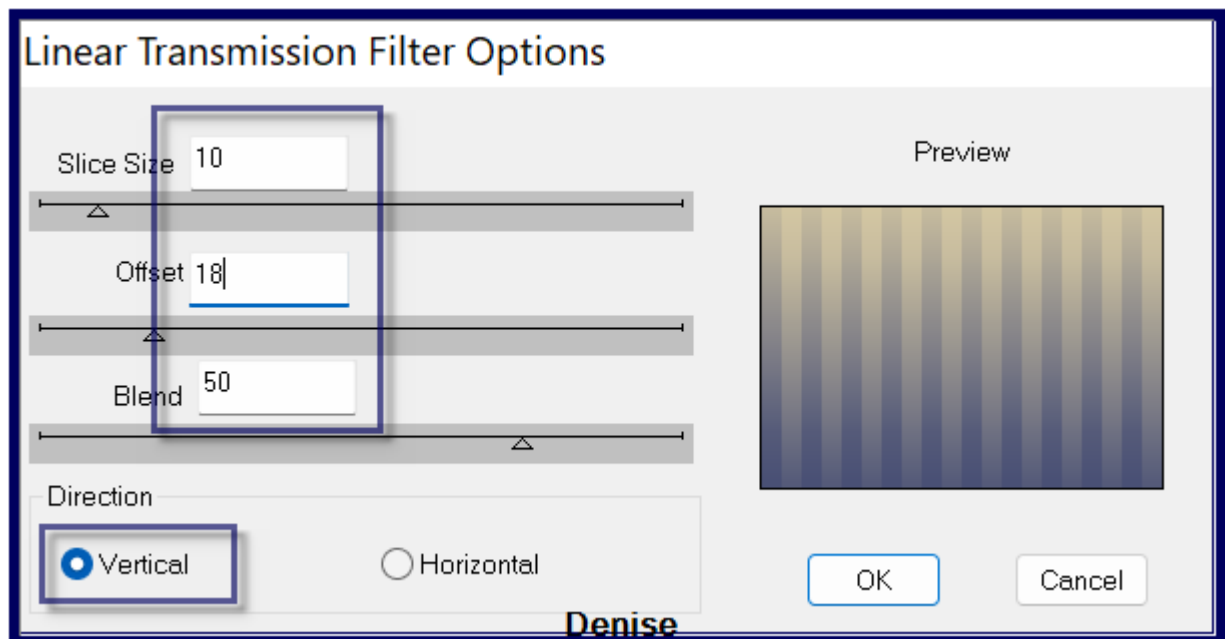
Change Foreground Colour to Foreground/Background Linear Gradient as follows:



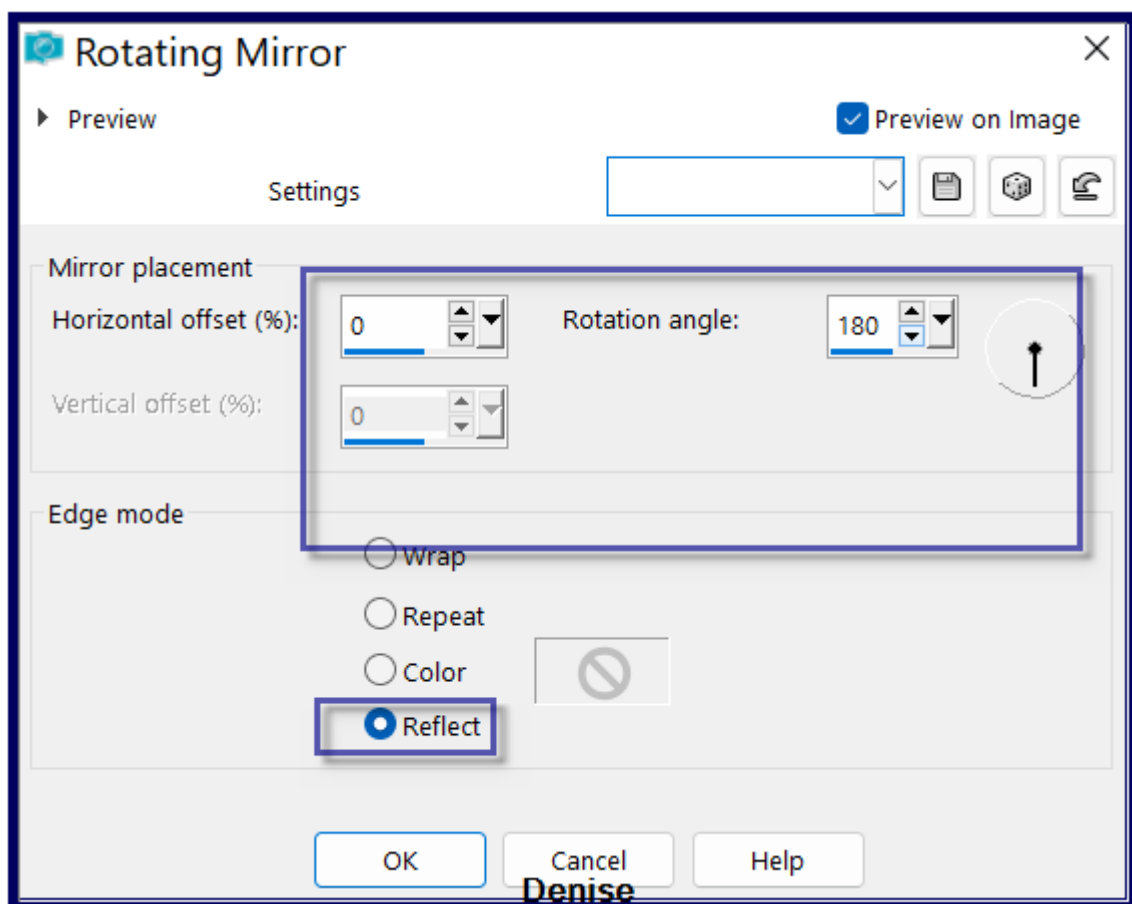
Flood fill Layer with Gradient

Step Two:

Effects/Plugins/DSB Flux/Linear Transmission as follows:

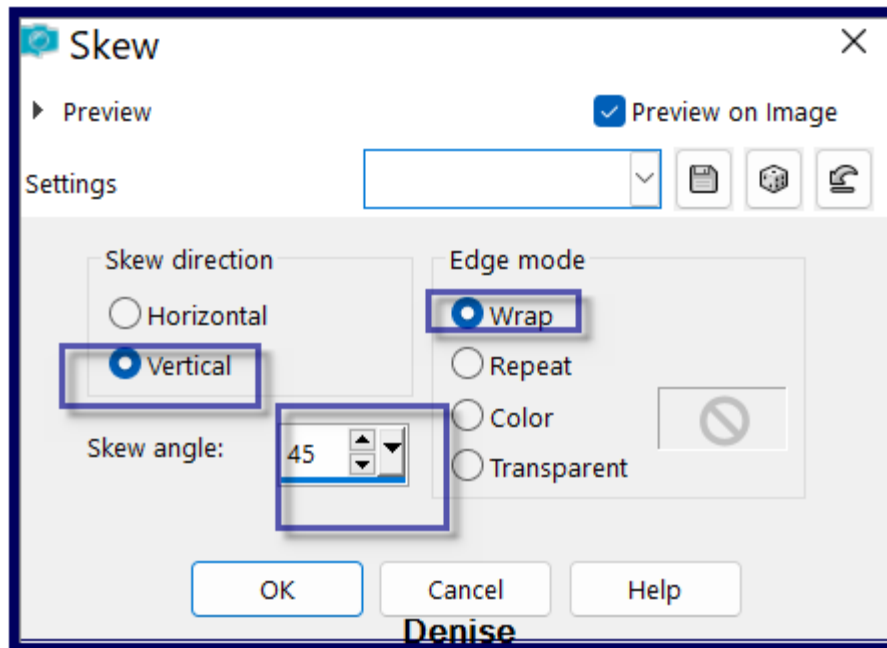


Effects/Edge Effects/Enhance More
Effects/Reflection Effects/Rotating Mirror as follows:

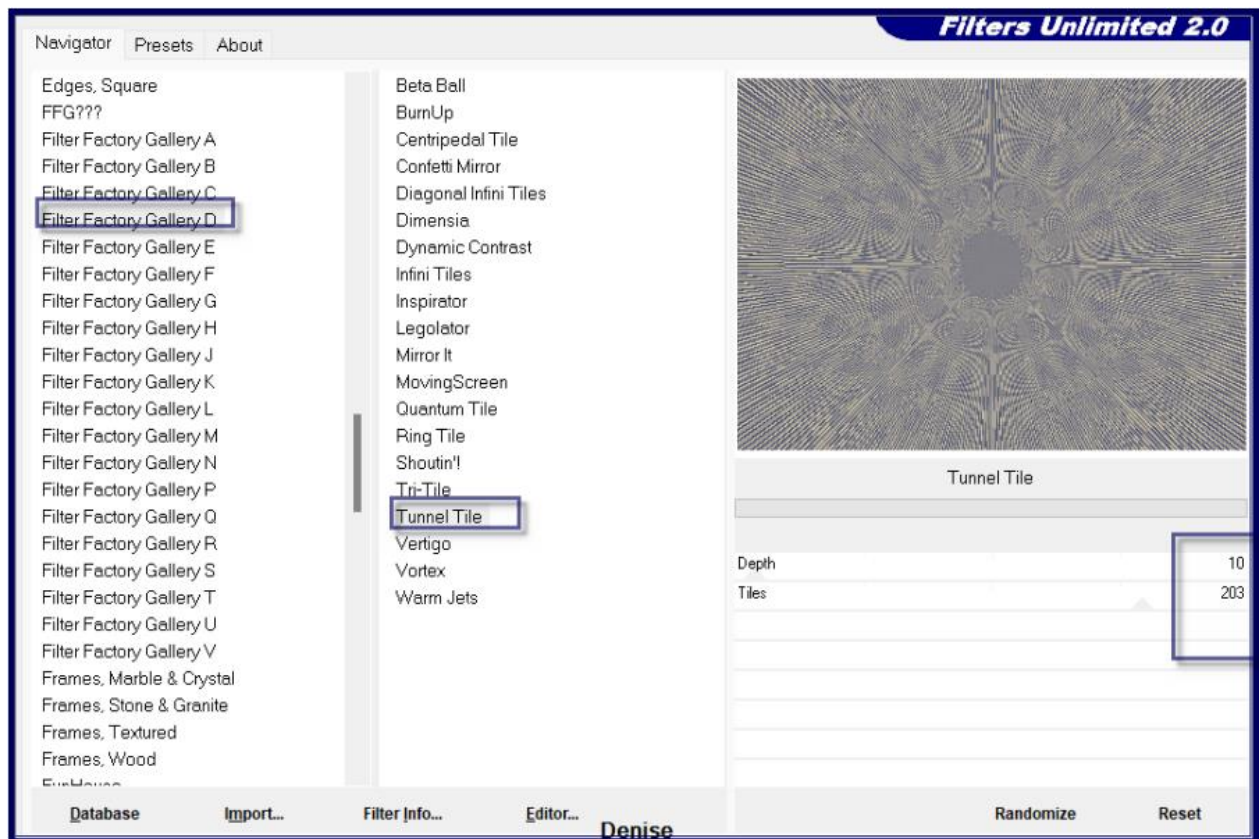


Layers/Duplicate

Step Three:
Close off Copy of Raster 1
Select Raster 1
Effects/Geometric/Skew as follows:

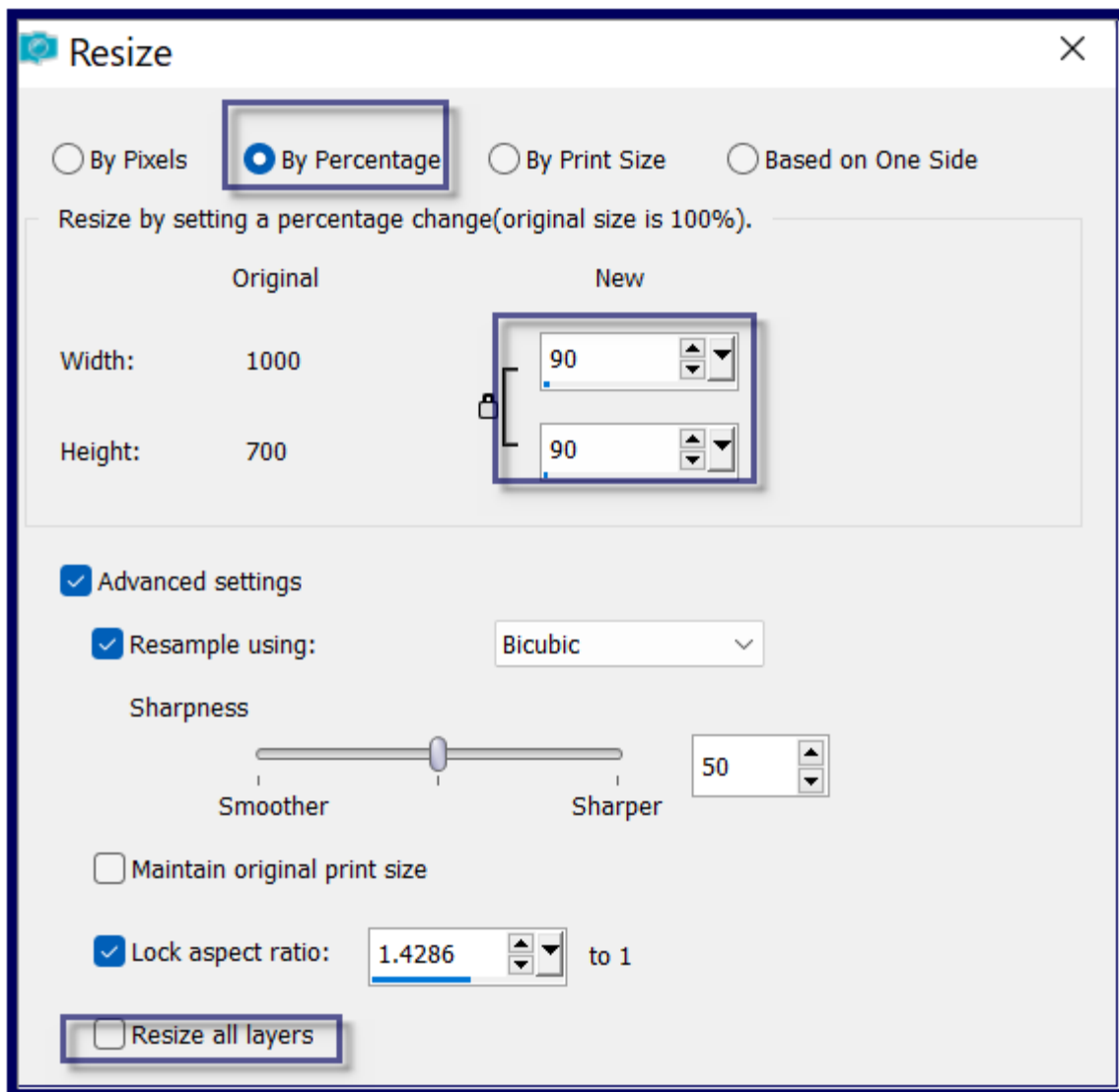


Open and Select Copy of Raster 1
Effects/Plugins/Filters Unlimited 2.0/Filter Factory Gallery D/Tunnel Tile as follows:

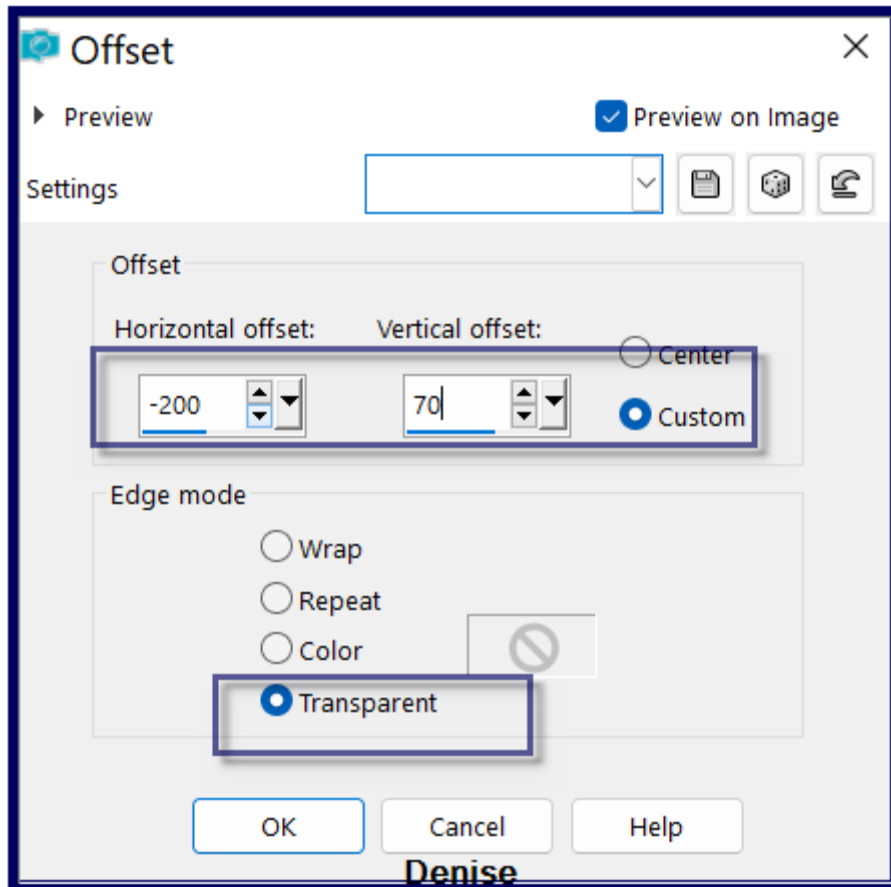


Selections/Load/Save Selection D.D.OdeToLove from Disk
Edit/Clear

Selections/Select None
Image/Resize 90% as follows:



Adjust/Sharpness/Sharpen
Effects/Image Effects/Offset as follows:



Effects/Plugins/Filters Unlimited 2.0/Convolution Filters/Emboss,
(light)/Default Settings

Step Four:

Maximise Flower1.png
 Edit/Copy Edit/Paste as New Layer
 Image/Resize/45%
 Adjust/Sharpness/Sharpen More
 Effects/Image Effects/Offset/same settings as before
 Effects/Plugins/Alien Skin Eye Candy 5/Perspective Shadow/Preset
 D.D.OdeToLove as follows:

Settings Basic

Factory Settings

Factory Default

Cast in Front

Cast on Wall

Drop Shadow, Blurry

Drop Shadow, High

Drop Shadow, Higher

Drop Shadow, Low

Drop Shadow, Lowest

Floating, High

Floating, Low

Long Perspective Shadow, in Back

Long Perspective Shadow, in Front

User Settings

Last Used

aditas_top-elegante-01

aditas_top-elegante-02

AMB-BB

Amelia

animabelle_perspective1

Animabelle_Shadow

Astrid Shadow 134

Benice_shadow_L144

Cocorico_Shadow_Animabelle

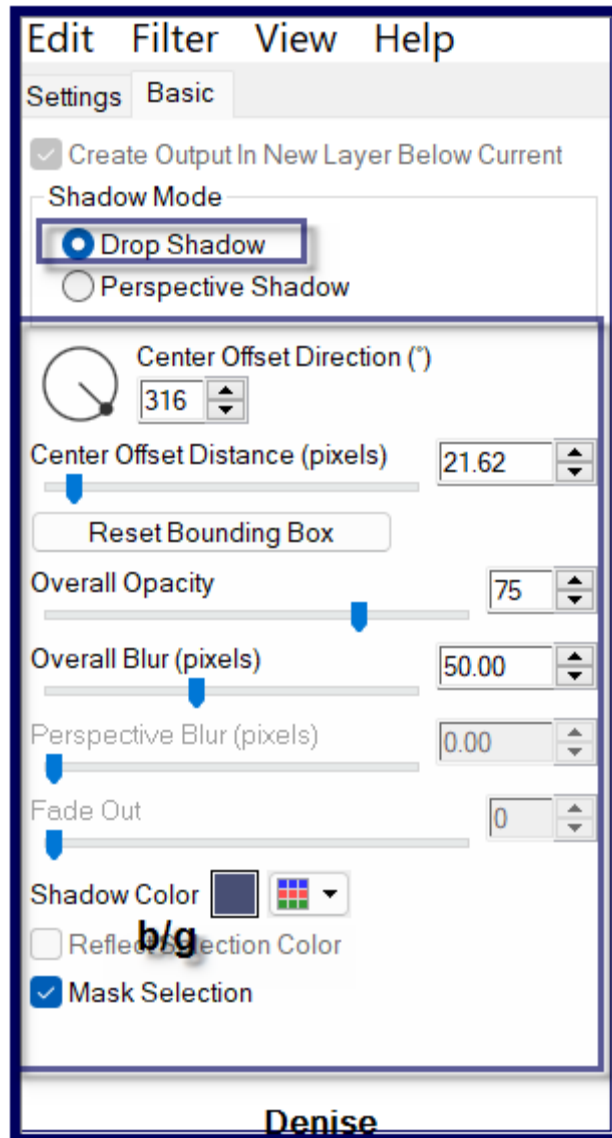
D..D.OdeToLove

D.D.BobbingForAppliesPreset

Save

Manage

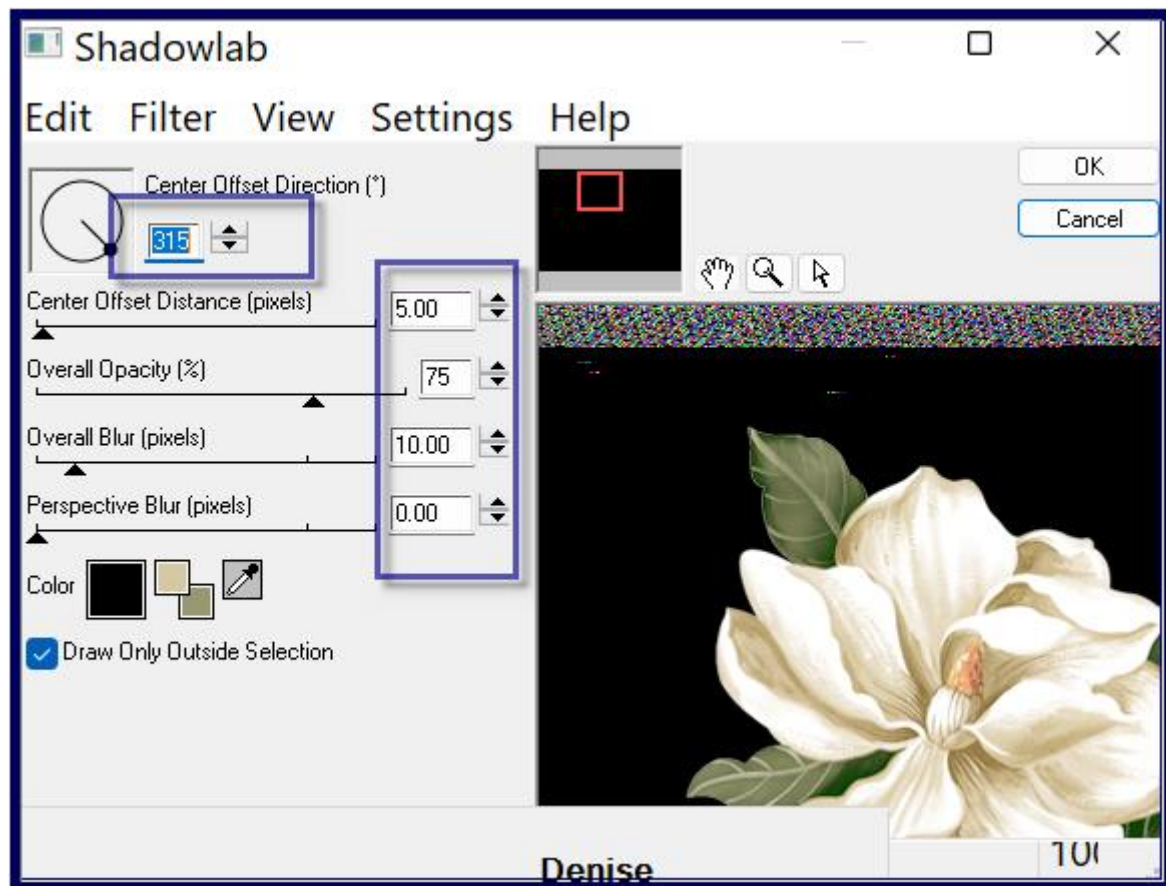
Denise



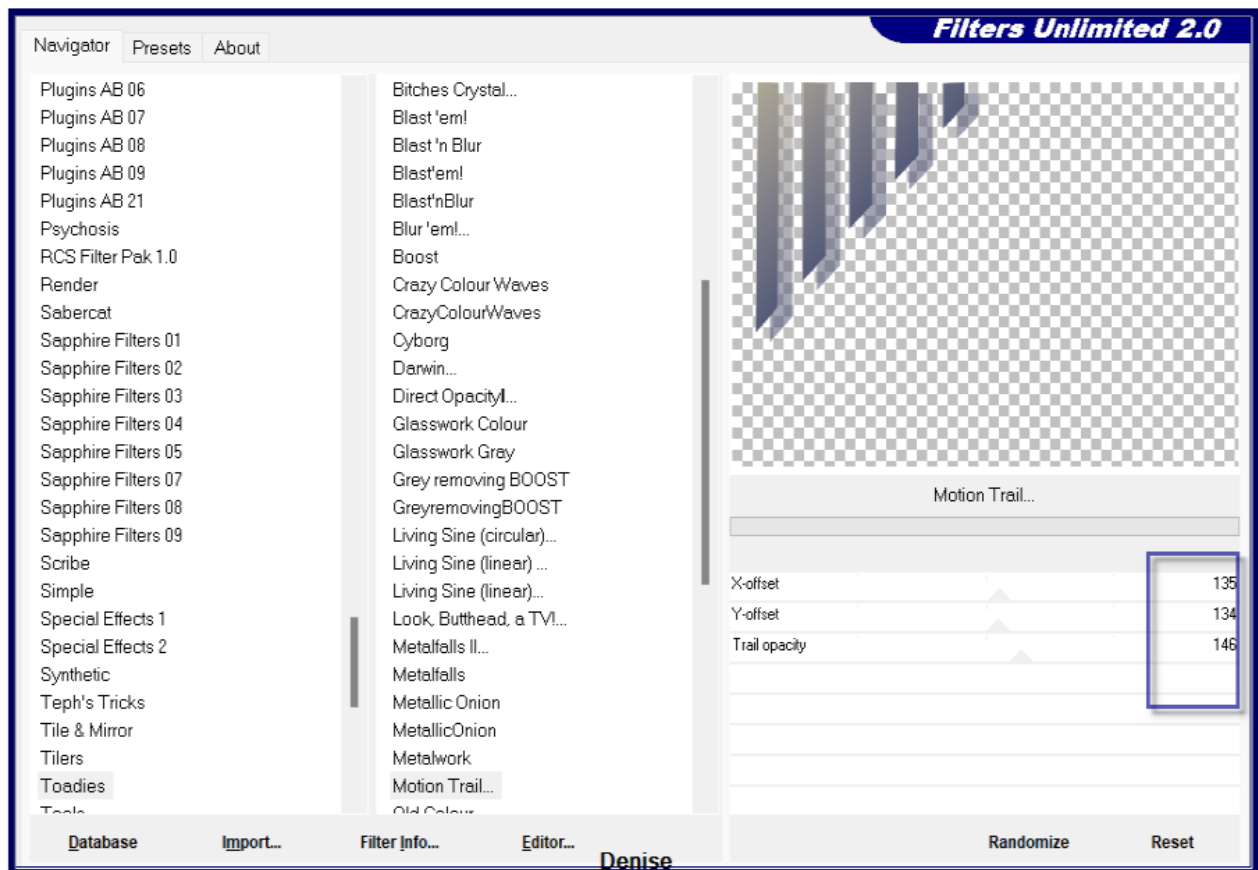
Step Five:

Layers/Merge/Merge Down

Repeat Alien Skin Eye Candy 4000/Shadowlab as follows:



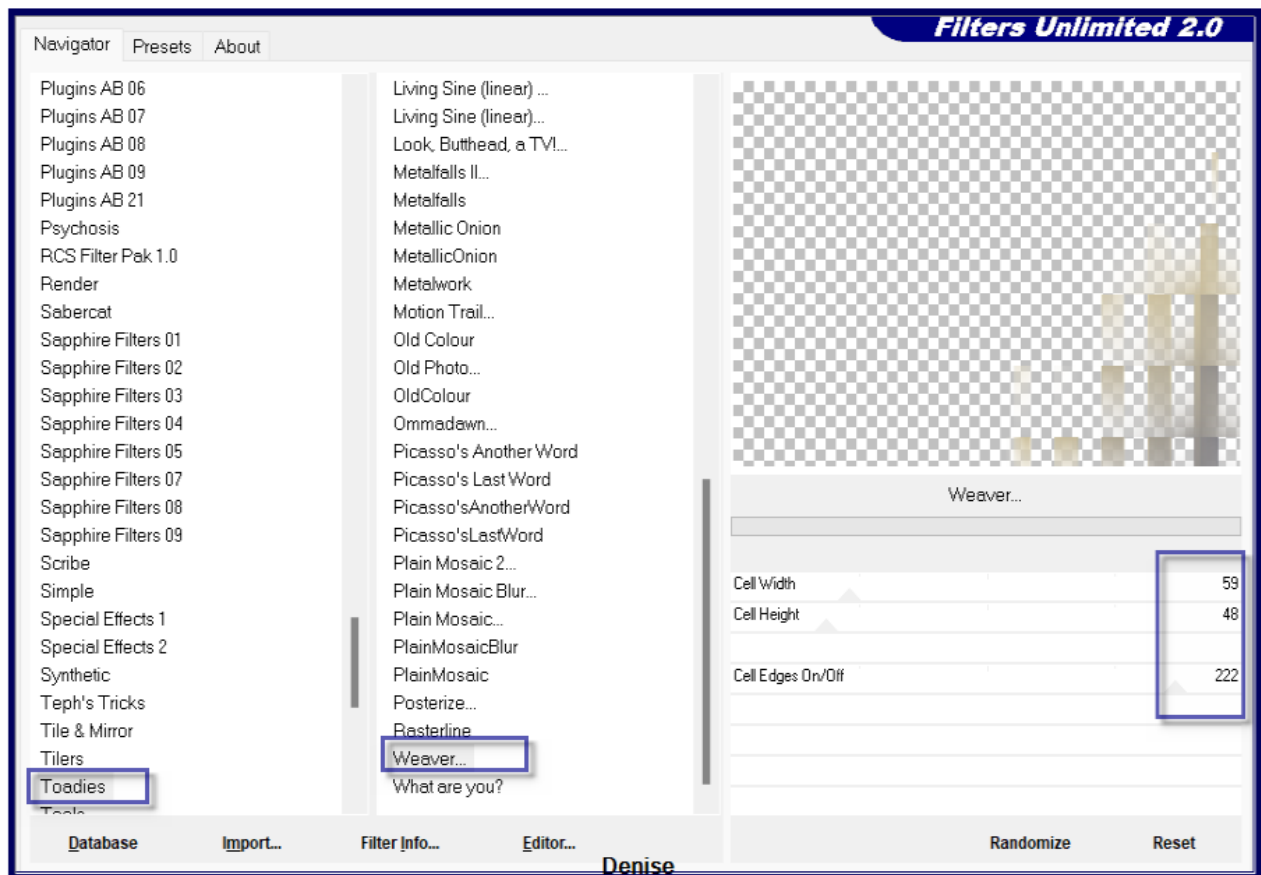
Close off Copy of Raster 1
 Select Raster 1
 Selections/Load/Save Selection/Load Selection #2 from Alpha Channel
 Promote Selection to Layer
 Selections/Select None
 Effects/Plugins/Filters Unlimited 2.0/Toadies/Motion Trail as follows:



Effects/Plugins/Filters Unlimited 2.0/Convolution/Emboss (light inverse)/Default Settings

Step Six:

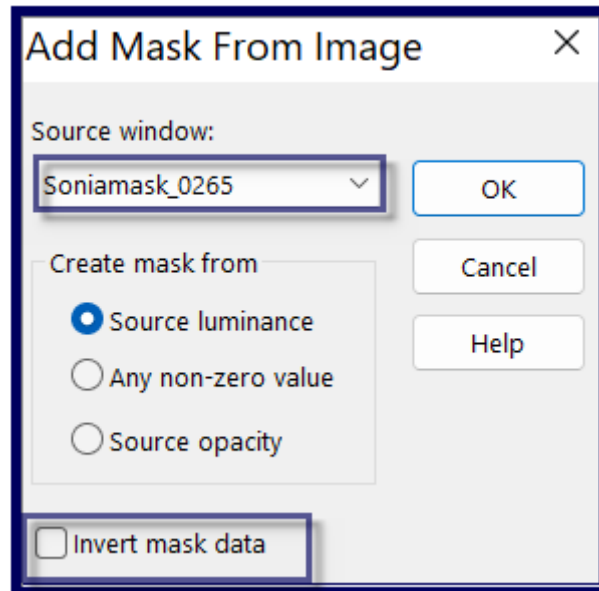
Select Raster 1
 Selection/Load/Save Selection/Load Selection #3 from Alpha Channel
 Select Raster 1
 Promote Selection to Layer
 Selections/Select None
 Effects/Plugins/Filters Unlimited 2.0/Toadies/Weaver as follows:



Selections/Load/Save Selection/Load Selection #4 from Alpha Channel
 Edit/Clear
 Selections/Select None
 Effects/Plugins/Filters Unlimited 2.0/Convolution Filter/Emboss,
 Light/Inverse/Default Settings

Step Seven:

Keep Copy of Raster 1 Layer closed
 Close Off Raster 1
 Layers/Merge/Merge Visible
 Open Raster 1
 Select Merged Layer
 Layers/New Raster Layer
 Flood fill with Foreground Gradient
 Layers/New Mask Layer/From Image (find Soniamask_0265.jpg) as
 follows:



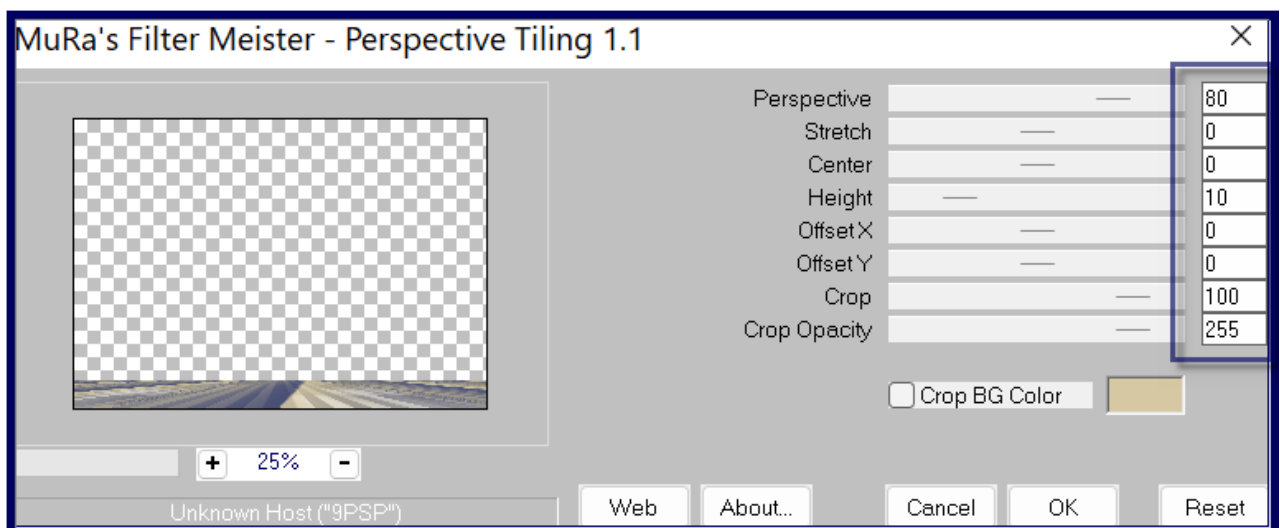
Effects/Edge Effects/Enhance More
 Layers/Merge/Merge Group
 Effects/Plugins/MuRa's Seamless/Emboss at Alpha/Default Settings
 Open Copy of Raster 1 Layer

Step Eight:

Maximise Text.png
 Edit/Copy Edit/Paste as New Layer
 Objects/Align/Right
 Effects/Plugins/Xero/Clarity/Default Settings

Step Nine:

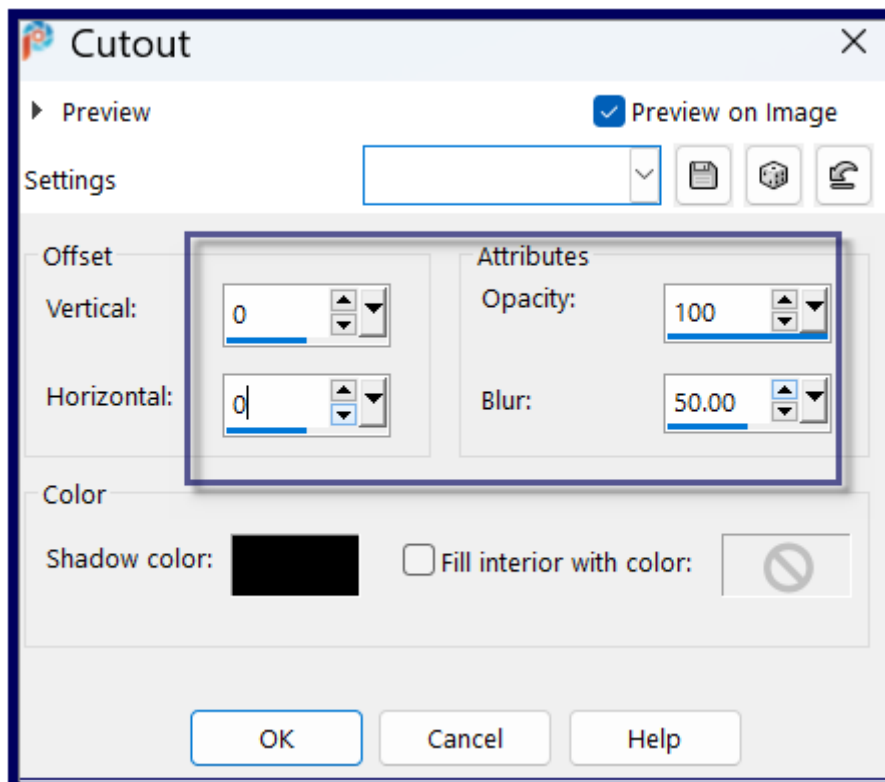
Layers/Merge/Merge Visible
 Layers/Duplicate
 Effects/Plugins/MuRa's Meister/Perspective Tiling as follows:



Effects/Reflection Effects/Rotating Mirror
Effects/Plugins/Eye Candy 4000/Shadowlab

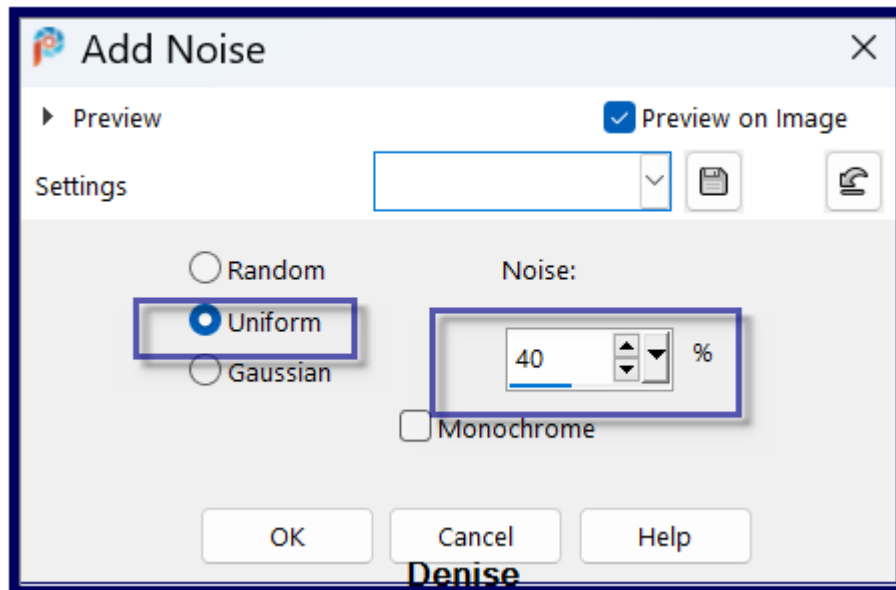
Step Ten:

Selections/Select All
Edit/Copy
Image/Add Borders/3 pixels/Background Colour
Effects/3D Effects/Cutout as follows:



Selections/Select None
Image/Add Borders/10 pixels/Foreground Colour
Image/Add Borders/3 pixels/Background Colour
Selections/Select All
Image/Add Borders/30 pixels/White
Selections/Invert
Change Foreground Gradient to Angle 45 Repeats 5
Effects/Plugins/Filters Unlimited 2.0/Toadies/What Are You/Default Settings
Effects/Edge Effects/Enhance
Effects/Reflection Effects/Rotating Mirror
Selections/Select None
Image/Add Borders/3 pixels/Background Colour
Selections/Select All
Image/Add Borders/40 pixels/White
Selections/Invert

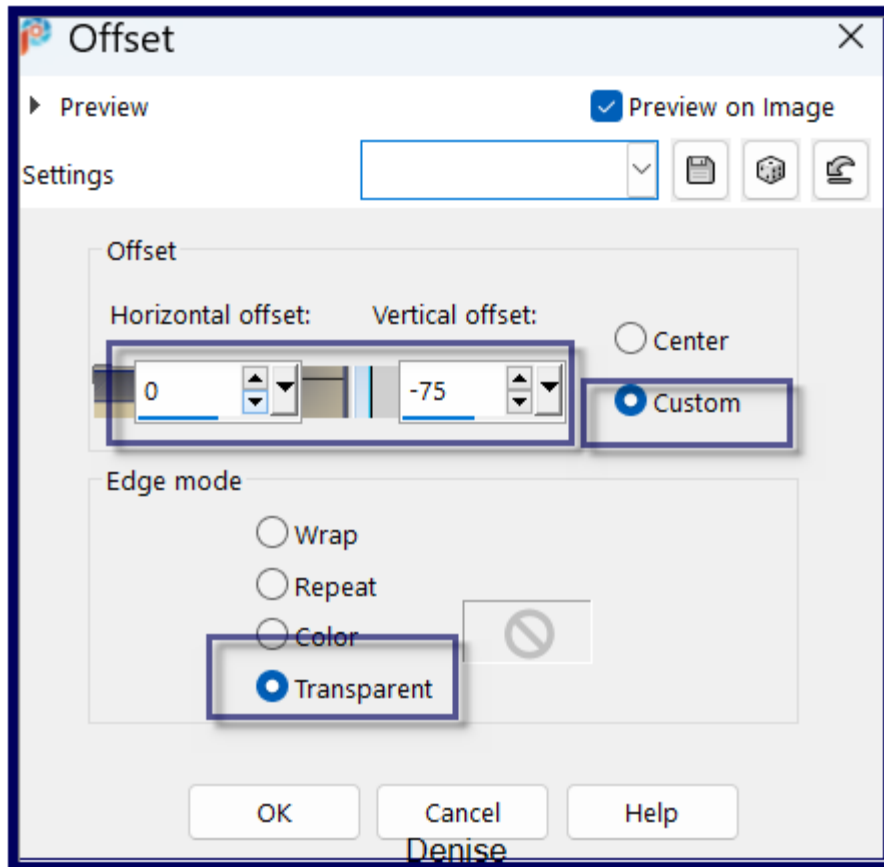
Flood fill with Foreground Gradient
Adjust/Add/Remove Noise/Add Noise as follows:



Selections/Select None
Image/Add Borders/3 pixels/Background Colour

Step Eleven:

Maximise 3613-luzcristina.pspimage
Edit/Copy Edit/Paste as New Layer
Effects/Image Effects/Offset as follows:



Layers/Duplicate
Layers/Merge/Merge Down

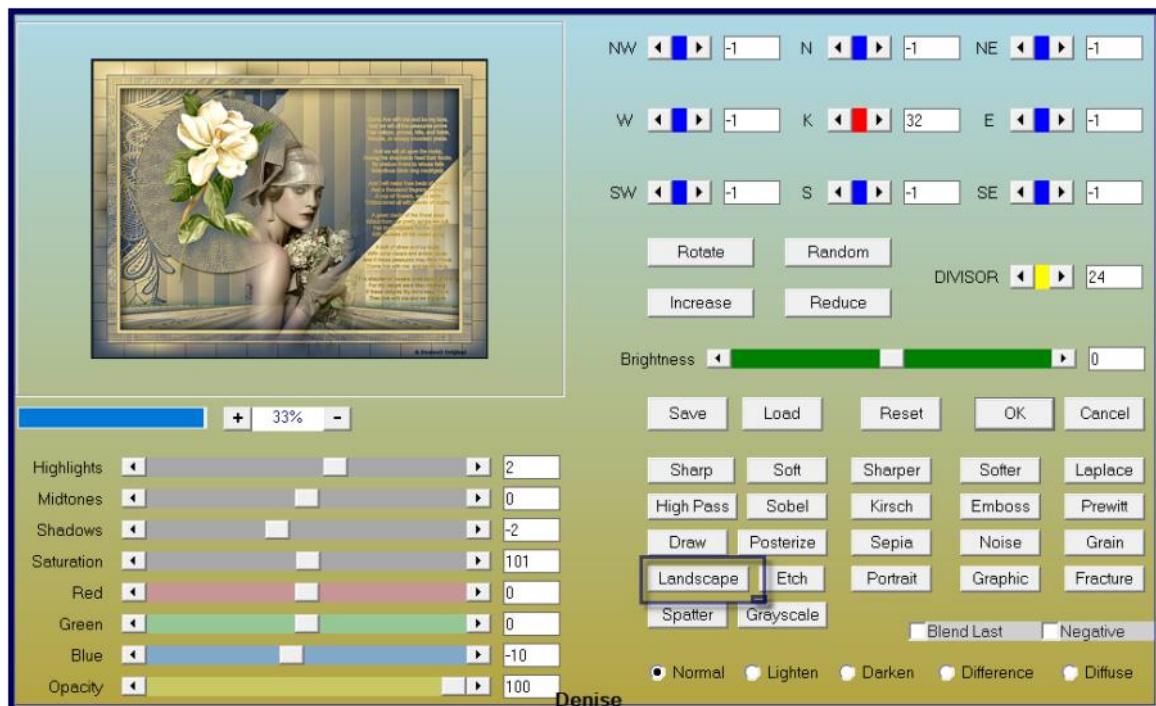
Step Twelve:

Maximise Signature.png
Edit/Copy Edit/Paste as New Layer
Place at bottom of Layer
Layers/New Raster Layer
Add your Watermark
Layers/Merge All Flatten

Image/Resize/1000 pixels wide - height will adjust itself

OPTIONAL STEP:

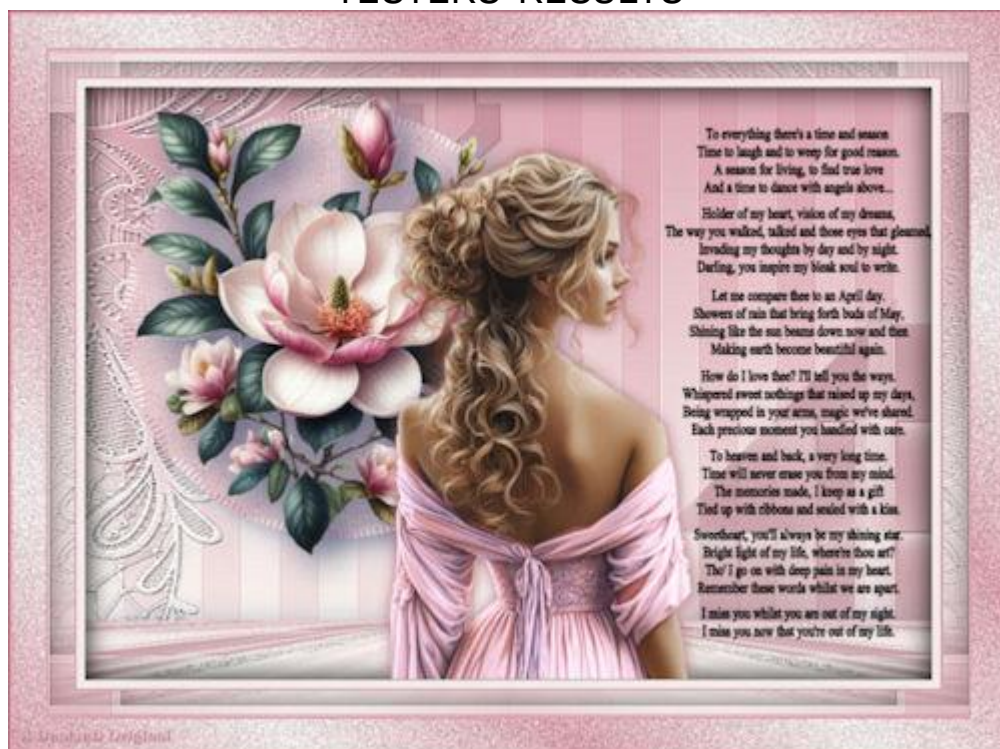
Effects/Plugins/AAA Filters/Custom Filter/Landscape as follows:



File/Export/JPEG Optimiser/Compression Value 20

I hope you have enjoyed this tutorial
A big thank you to the ladies who test my Tutorials

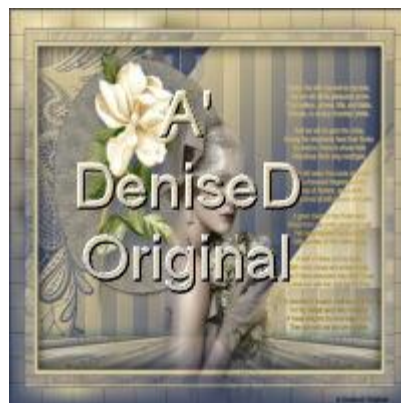
TESTERS' RESULTS



BETTY



MARIE



For Other Versions of this Tutorial, please go to :

<http://escapingtopsp2.altervista.org/OdeToLoveVersions/OdeToLoveVersions.html>

<https://escapingtopsp2.blogspot.com/>