

This tutorial is written by Denise D. on 2nd October, 2023
from my own ideas.

Any resemblance to other tutorials is co-incidental and unintentional.
If you wish to share my Tutorials, you **MUST** obtain my permission first.
All I ask is that you advise me and credit for the tutorial is given to me and
linked to

<http://escapingtopsp2.altervista.org/Home/homeb.html>

If you wish to join my mailing list, please go to:

<https://groups.google.com/g/escaping-to-psp3>

Please do not upload any of my completed Tutorial images onto sites
such as Fotki, Pinterest, Photobucket or similar

SUMMER DAYS



<http://escapingtopsp2.altervista.org/SummerDays/SummerDays.html>





Thank you Inge-Lore, Michele B.and Vera Mendes for these Translations



Click on the Box to download Supplies

Supplies

**You will need to supply a main images of person
A landscape Image
1 Deco**

Supplies included with the Tutorial

DeniseD Signature.png

D.D.Text.png

Preset:

User defined Filter Preset Emboss 3

Selections:

D.D.SummerDays

D.D.SummerDays2

Texture:

8-cmv.bmp

Mask:

100201074151397205354489.jpg

LF-Mask-336.jpg

You can join this Group at:

<http://linda-psp-design-tubes.jouwweb.nl/maskers-masks>

Thank you Lizztish for the use of their images

Links to her Groups is:

<https://groups.google.com/forum/?fromgroups#!forum/emotivemists>



Double Click on the icon in your supplies folder to install this Preset in your Plugin.

Notes:

This Tutorial was created in PSP2023

.... **other versions may need adjustment**

Some of the graphics may be from Free to Use sites or Share Groups.

If you are the creator of one of these please let me know so that appropriate credit can be given.

No infringement of copyright is intended or intentional.

Before opening PSP, download plugins and install

Some helpful information:

You can change the blend mode, opacity and drop shadow, as well as colourise the materials, according to the tubes/colours you are using.

When applying the Resize with the All Layers option checked, this will be informed in the tutorial, otherwise, apply the resize with this option unchecked.

Remember always to save your work.

Whenever you reduce an image, apply Adjust/Sharpness/Sharpen, to maintain the sharpness of the image.

Some tools or features have other names in earlier versions of the PSP.

<http://escapingtopsp2.altervista.org/Home/homeb.html>

© Vera Mendes	Tools:	Old versions:
	Pick Tool	deformation
	Horizontal Mirror	Mirror
	Vertical Mirror	flip

**Please Note: Offset settings provided in this tutorial may vary according to size of your image.
Please adjust to suit.**

The settings remain the same throughout this Tutorial unless otherwise stated.

Set your Foreground colour to #c8ecac

Set your Background colour to #ff6bb4

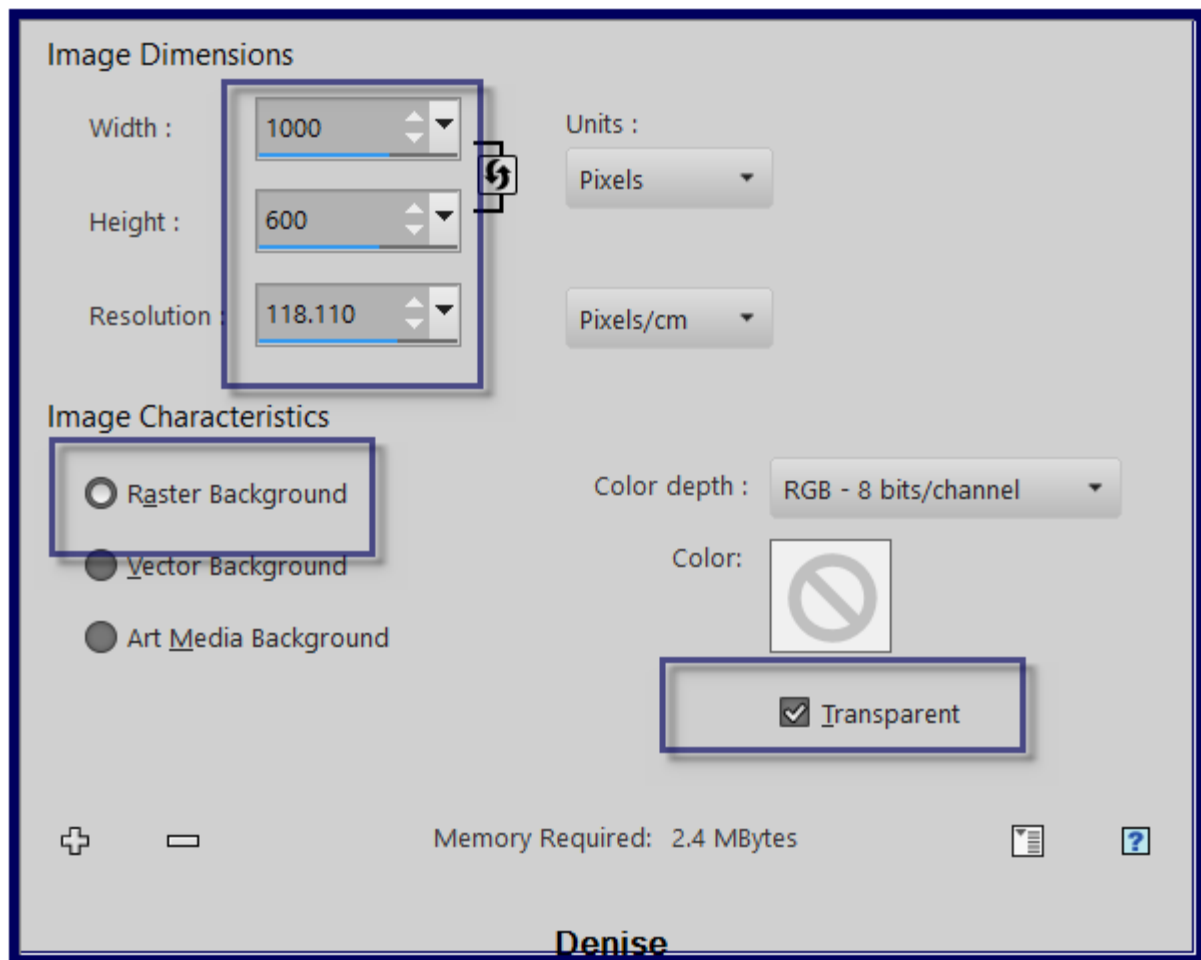


Step One:

*Place Texture in PSP Texture Folder
Place Selections in PSP Selection Folder
Place Preset in PSP Preset Folder
Open Masks and minimise*

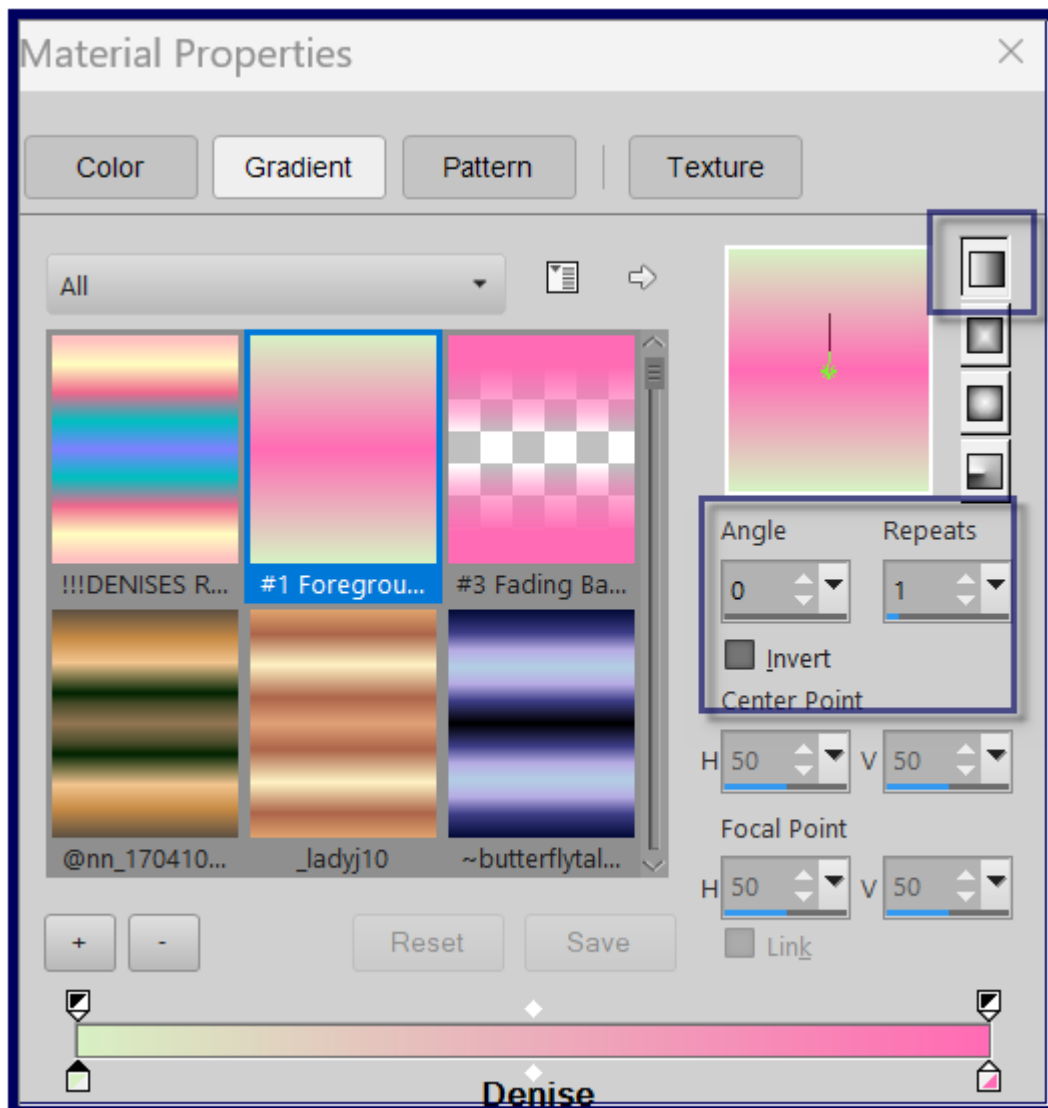
Open graphics in PSP, duplicate (Shift D) and close the original.

File/New/New Image 1000 pixels x 600 pixels as follows:

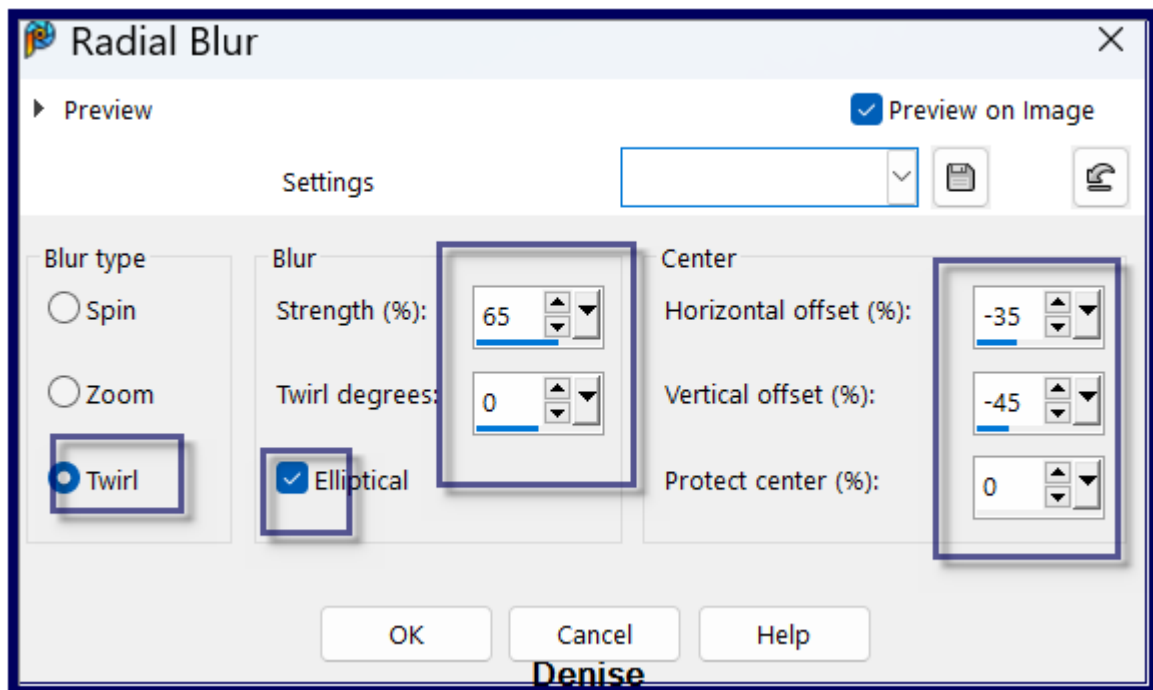


Step Two:

Change Foreground Colour to Foreground/Background Linear Gradient as follows:

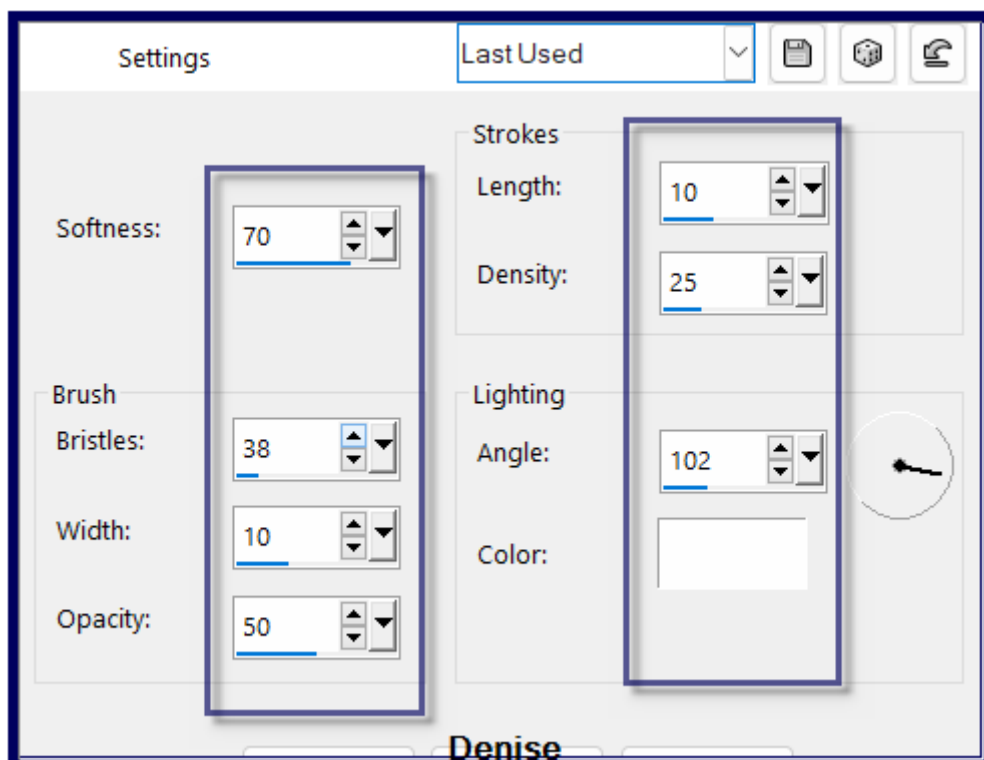


Flood fill with Foreground Gradient
 Selections/Select All
 Maximise landscape image of your choice
 Edit/Paste into Selection
 Selections/Select None
 Adjust/Blur/Radial Blur as follows:



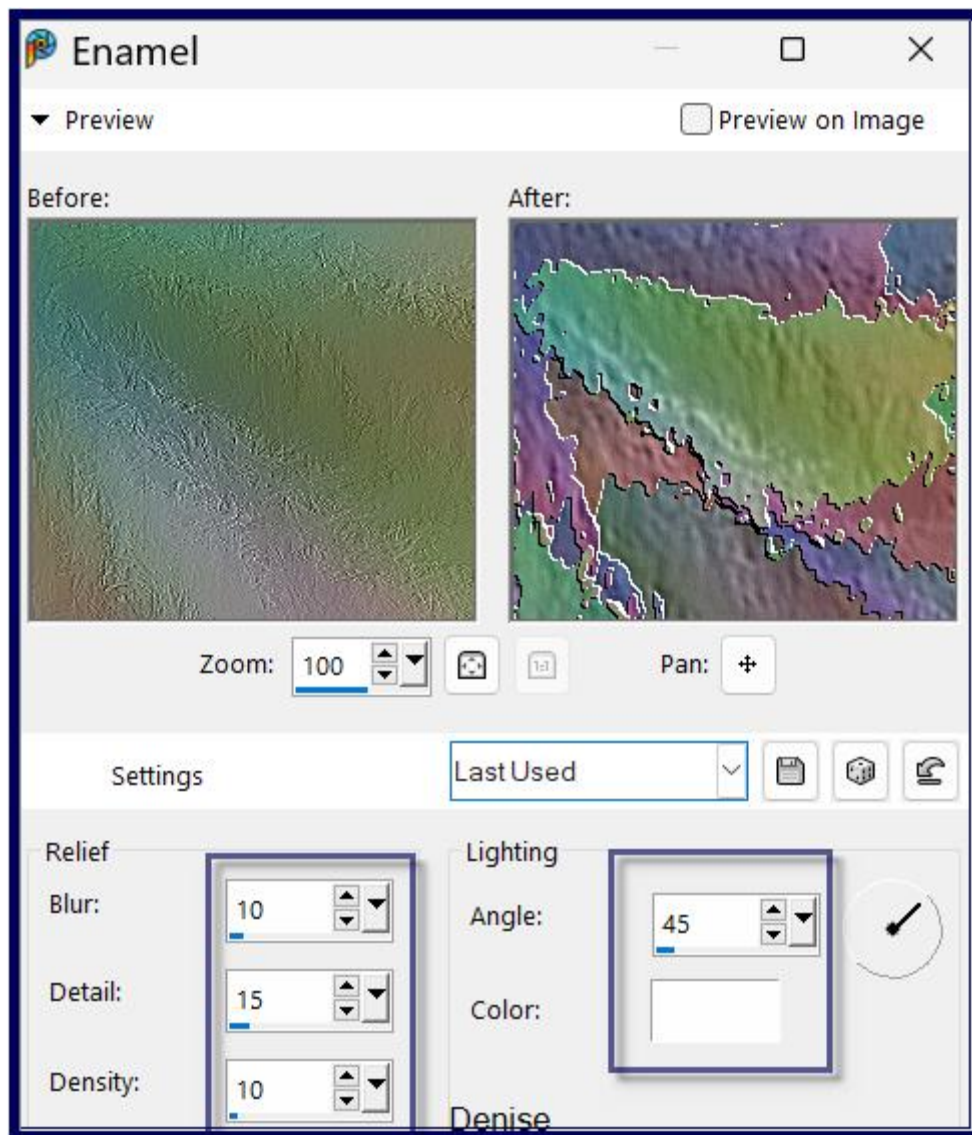
Denise

Step Three:
Effects/Art Media Effects/Brush Strokes as follows:

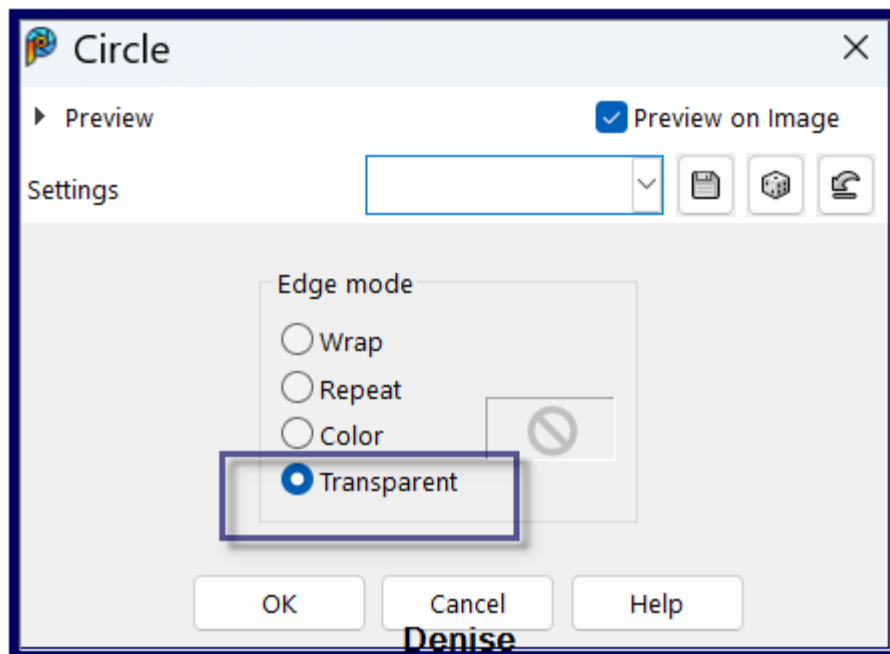


Denise

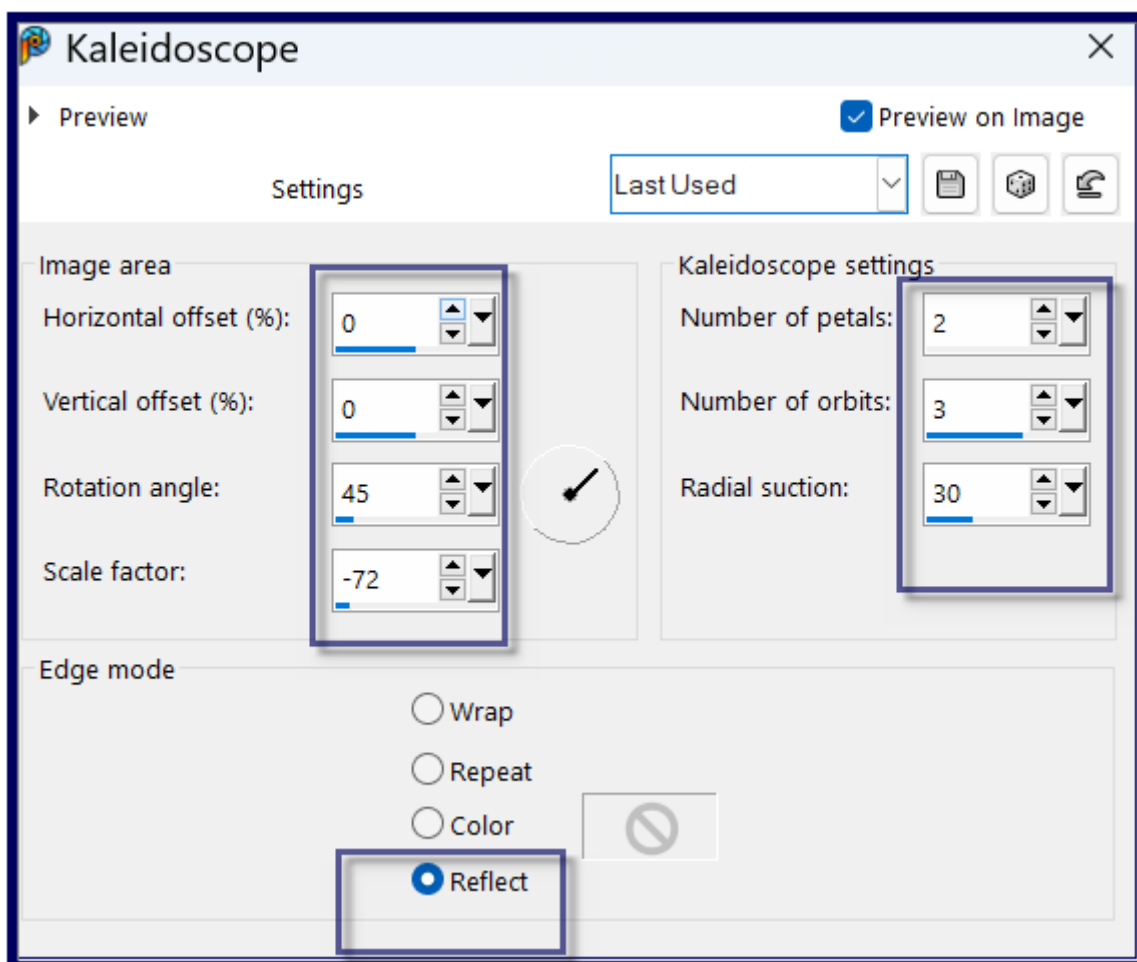
Layers/Duplicate
Effects/Artistic Effects/Enamel as follows:



Step Four:
Effects/Geometric Effects/Circle as follows:

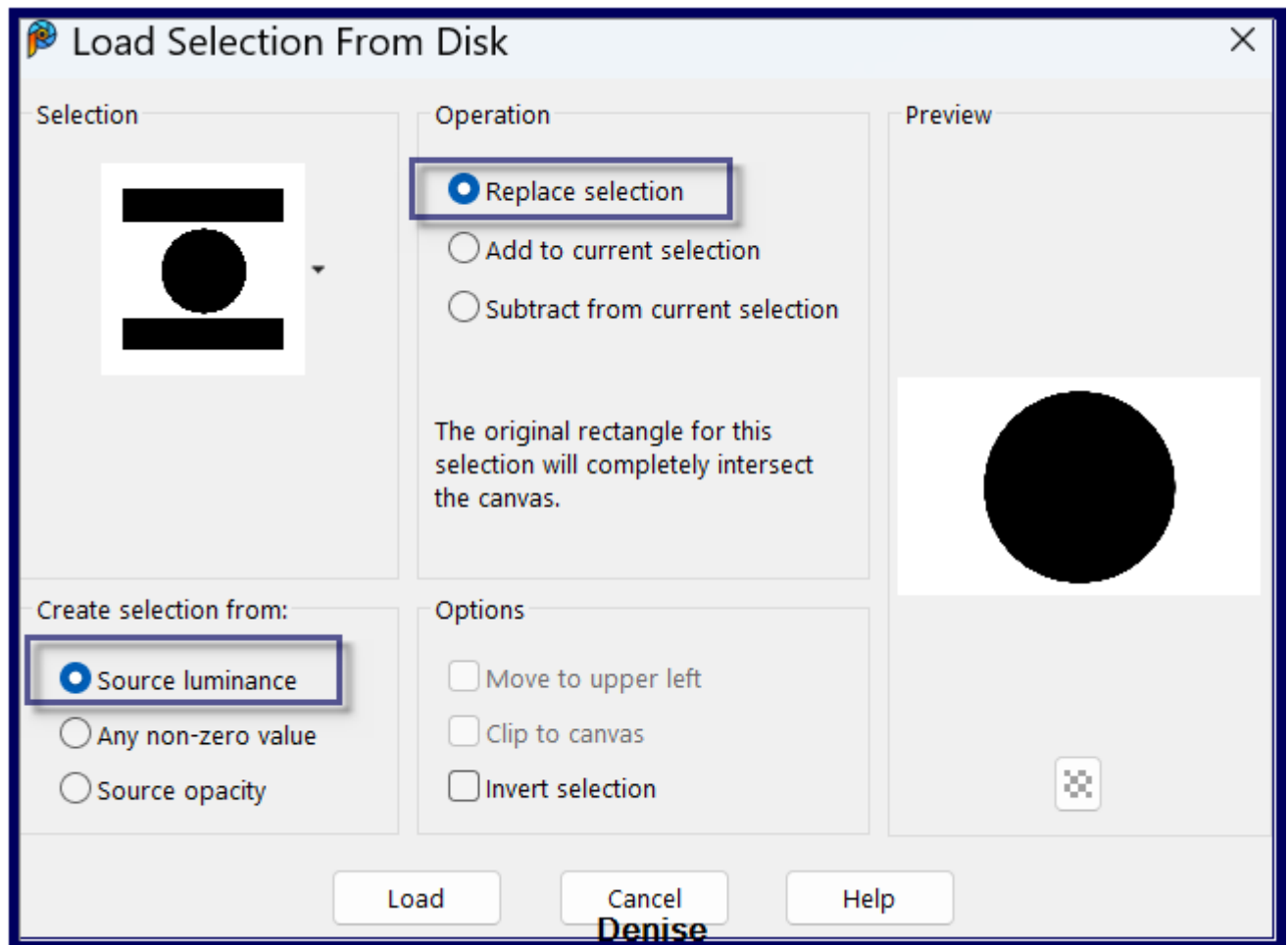


Layers/Duplicate
Effects/Reflection Effects/Kaleidoscope as follows:



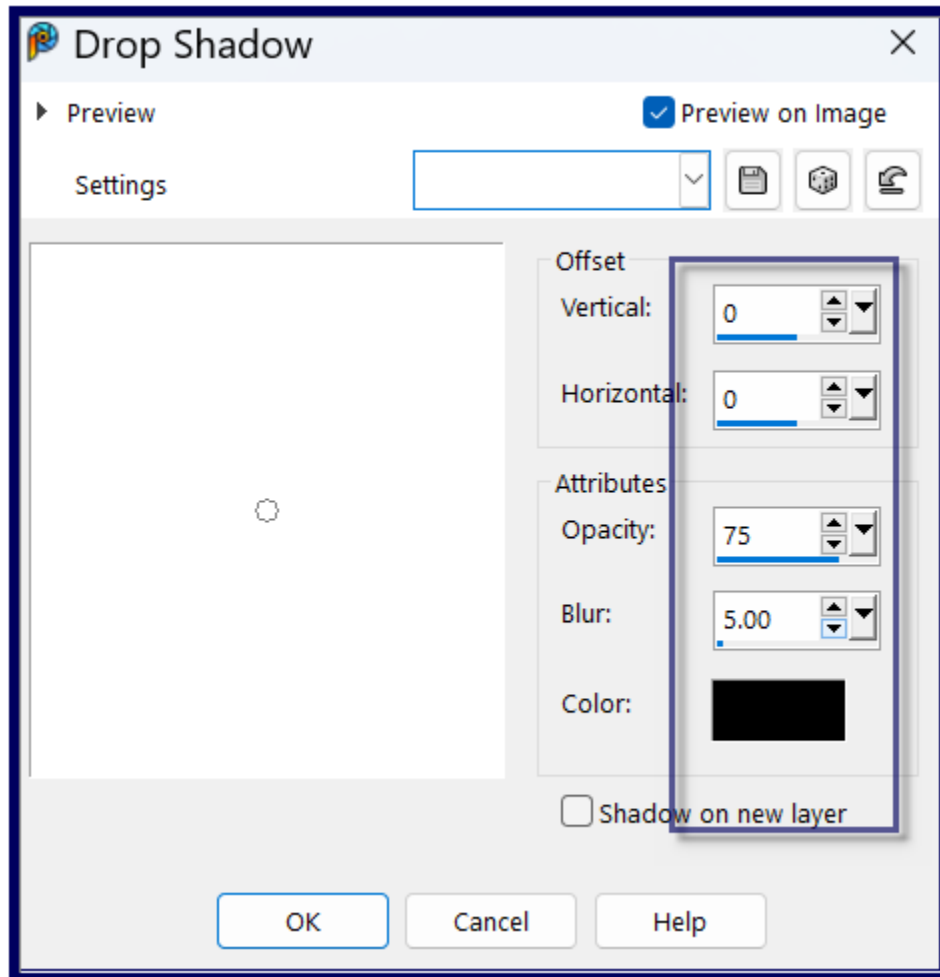
Selections/Save/Load Selection/Load Selection D.D.SummerDays from

Disk as follows:



Edit/Clear
Selections/Select None

Step Five:
Effects/3D Effects/Drop Shadow as follows:



Layers/Merge/Merge Down
Repeat Drop Shadow

Step Six:

Selections/Load/Save Selection/Load Selection D.D.SummerDays2 from
Disk

Layers/New Raster Layer

Maximise your landscape Image

Edit/Copy Edit/Paste as a New Layer

Move the image to the section you wish to be seen

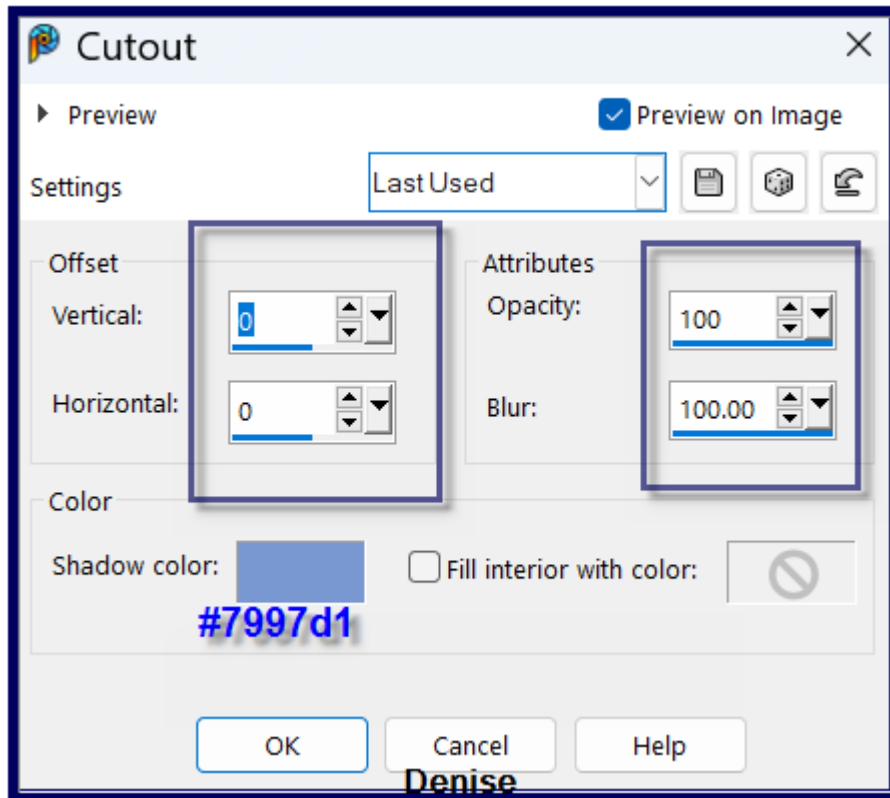
Selections/Invert

Edit/Clear

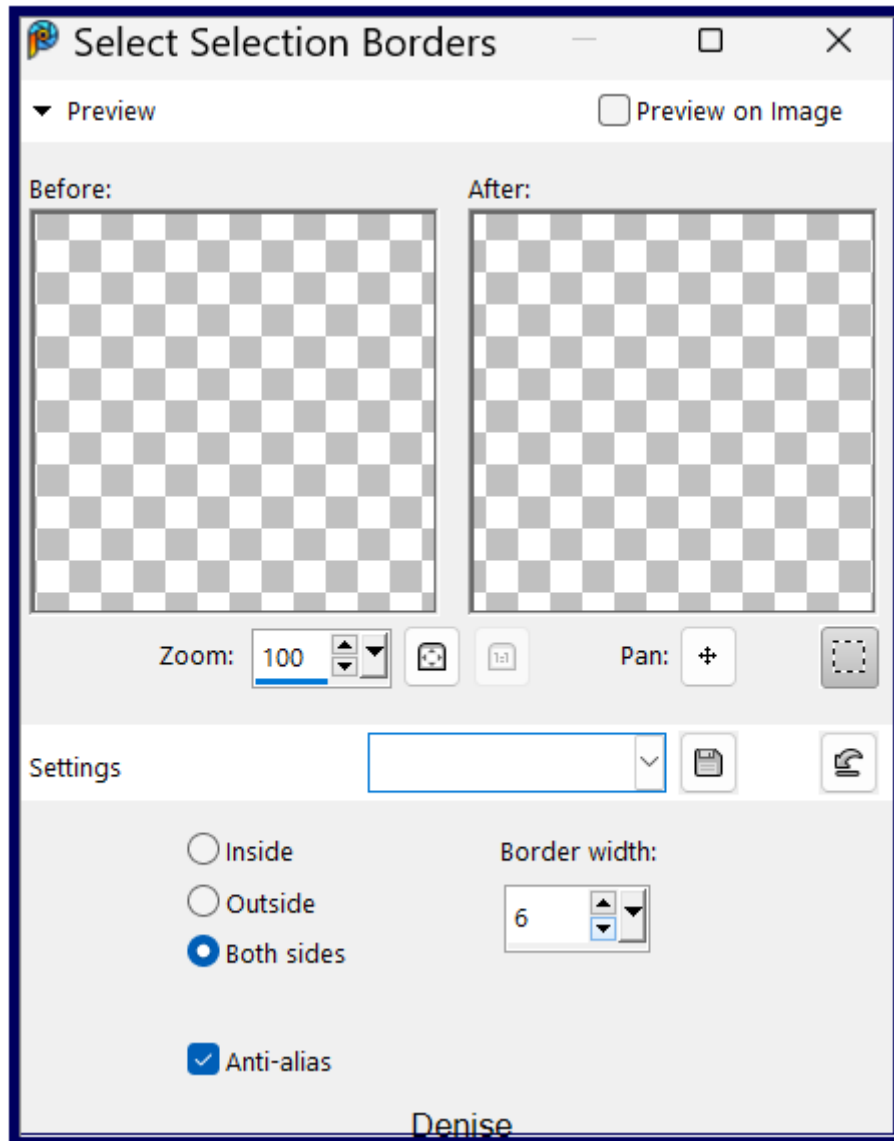
Selections/Invert

Layers/New Raster Layer

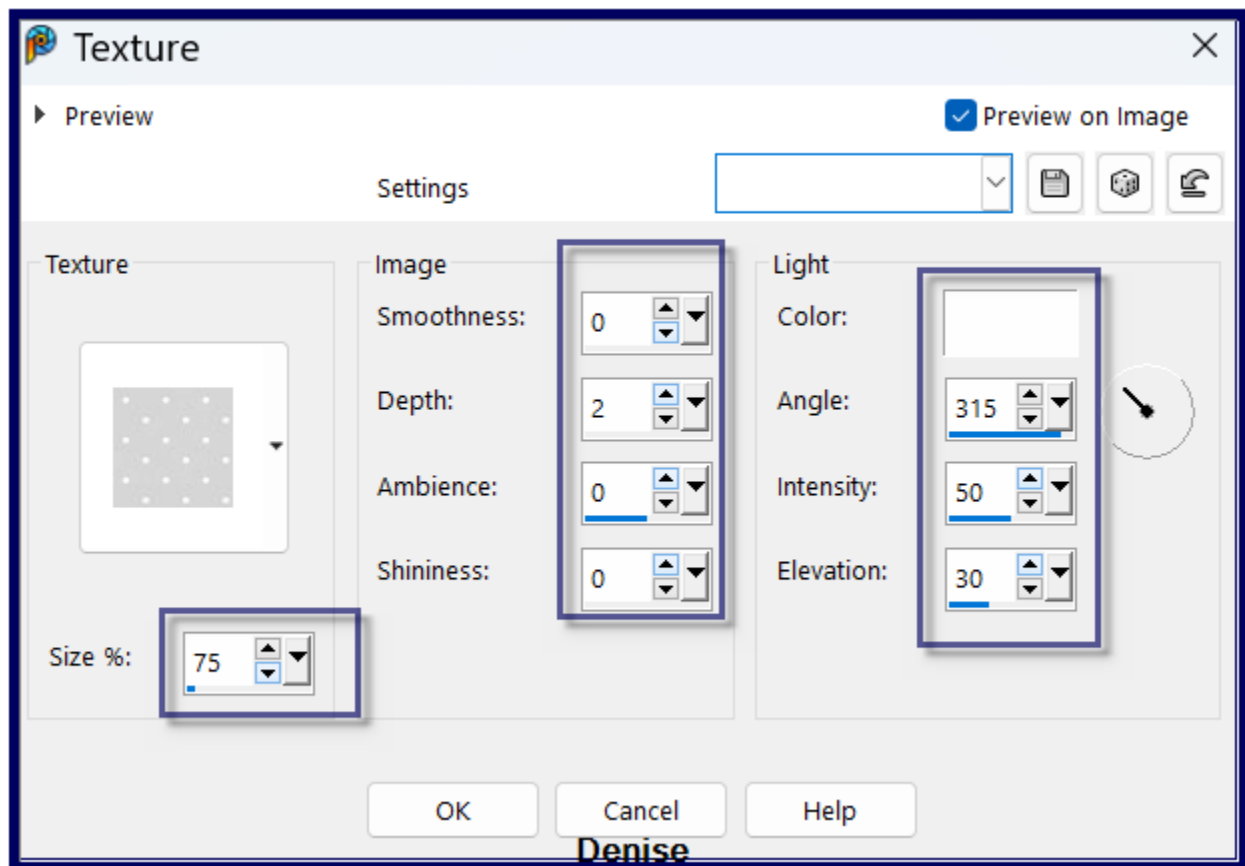
Effects/3D Effects/Cutout as follows:



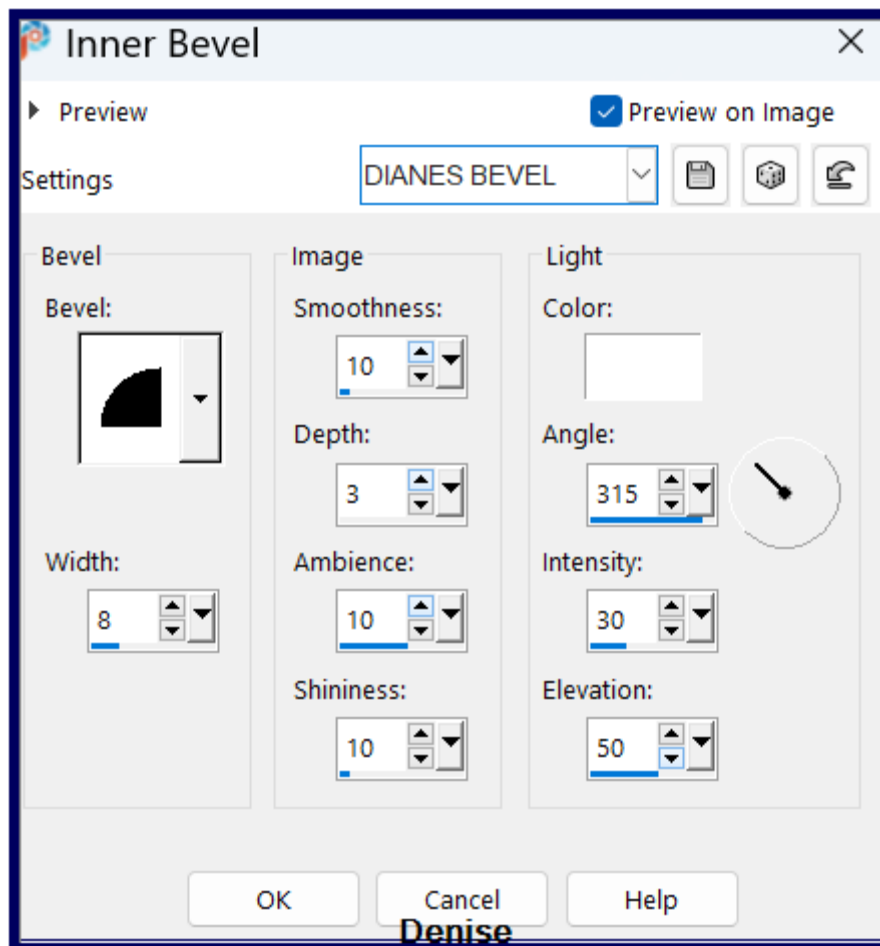
Selections/Modify/Select Selection Borders as follows:



Layers/New Raster Layer
Change Background Colour to #7997d1
Flood fill with Foreground Gradient BUT change settings to Angle 45
Repeats 5
Effects/Texture Effects/Texture/8_cmv.bmp as follows:



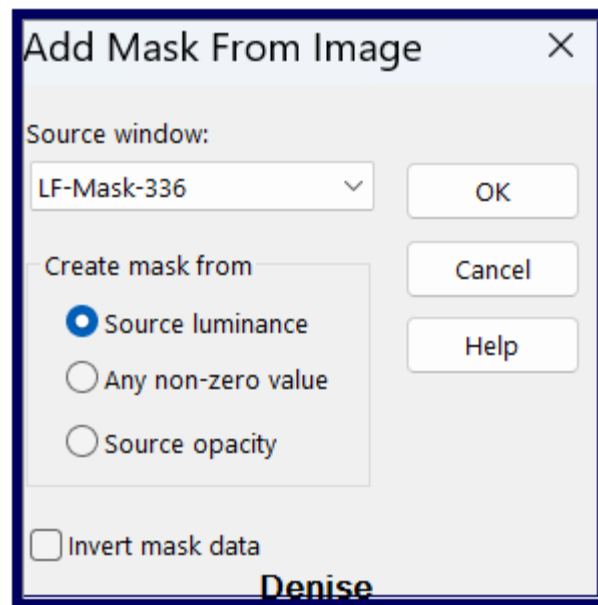
Adjust/Sharpness/Sharpen More
Effects/3D Effects/Inner Bevel as follows:



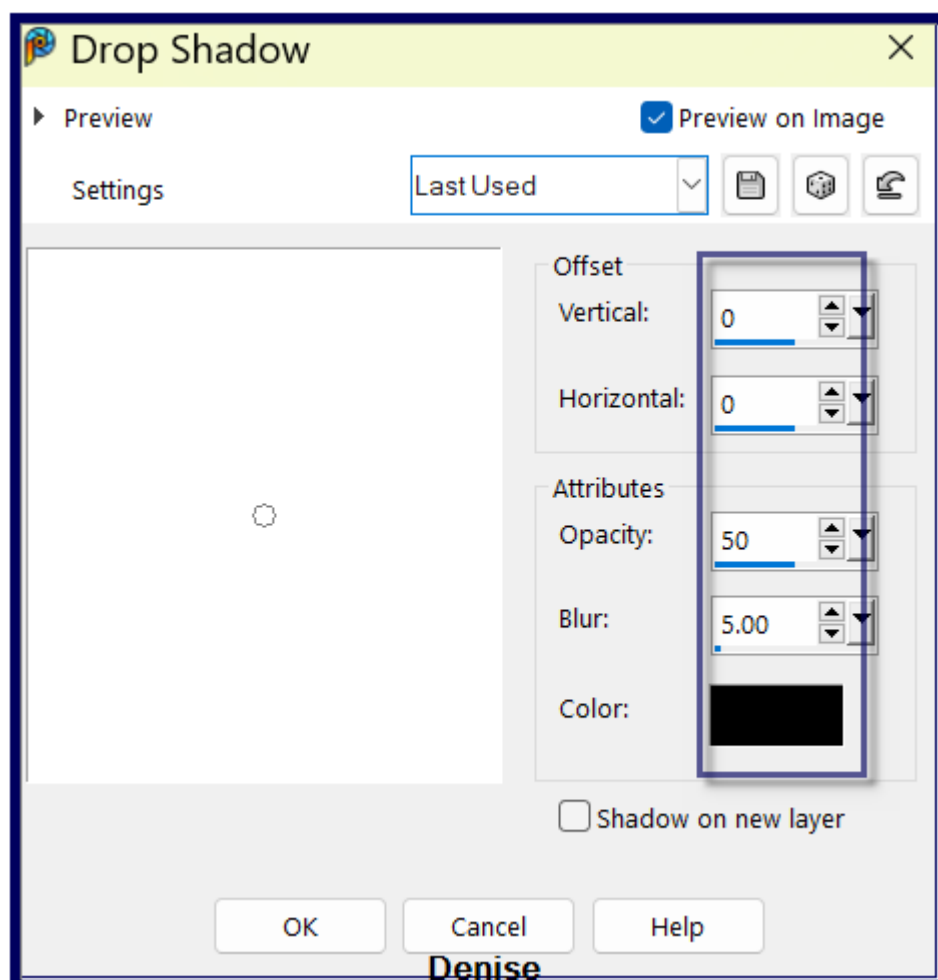
Selections/Select None
 Close off Raster 1
 Layers/Merge/Merge Visible
 Open Raster 1 and Select

Step Seven:

Edit/Paste as New Layer
 (Landscape image should still be saved if not - Edit/Copy Edit/Paste as
 New Layer)
 Effects/Image Effects/Seamless Tiling/Default Settings
 Change Opacity to 35% (or opacity of your choice)
 Layers/New Raster Layer
 Flood fill with Foreground Gradient
 Layers/New Mask Layer from Image (LF-Mask-336.jpg) as follows:



Effects/Edge Effects/Enhance More
Layers/Merge/Merge Group
Effects/3D Effects/Drop Shadow as follows:



Step Eight:

Select Raster 1

Layers/Duplicate

Close off Raster 1

Layers/Merge/Merge Visible

Open Raster 1 and Select

Layers/Arrange/Bring to top

Using the Deform/Pick Tool - move the Layer down to 500 pixels as shown below:



Deselect Pick/Deform Tool

Step Nine:

Effects/Distortion Effects/Polar Co-ordinates/Polar to Rectangular

Objects/Align/Left

Layers/Duplicate

Image/Mirror/Horizontal OR Image/Mirror

Layers/Merge/Merge Down

Effects/Geometric Effects/Circle

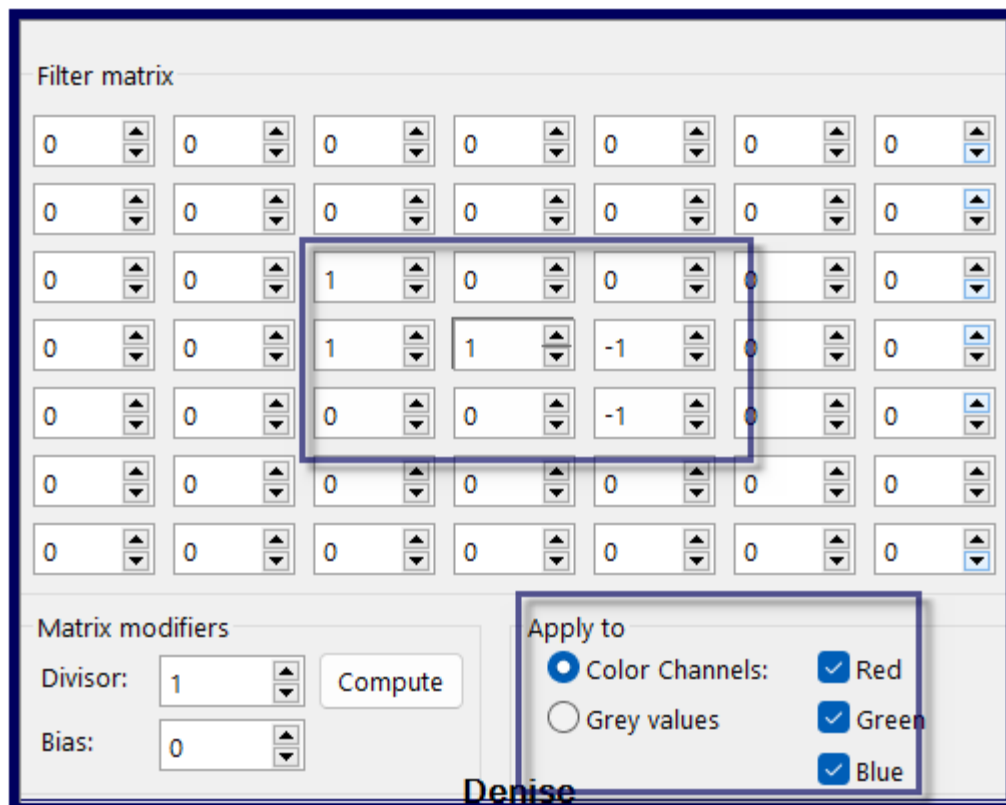
Effects/3D Effects/Drop Shadow BUT change Opacity to 75

Maximise D.D.Text.png

Edit/Copy Edit/Paste as New Layer

Objects/Align/Bottom

Effects/User Defined Filter/Emboss 3 Preset OR as follows:



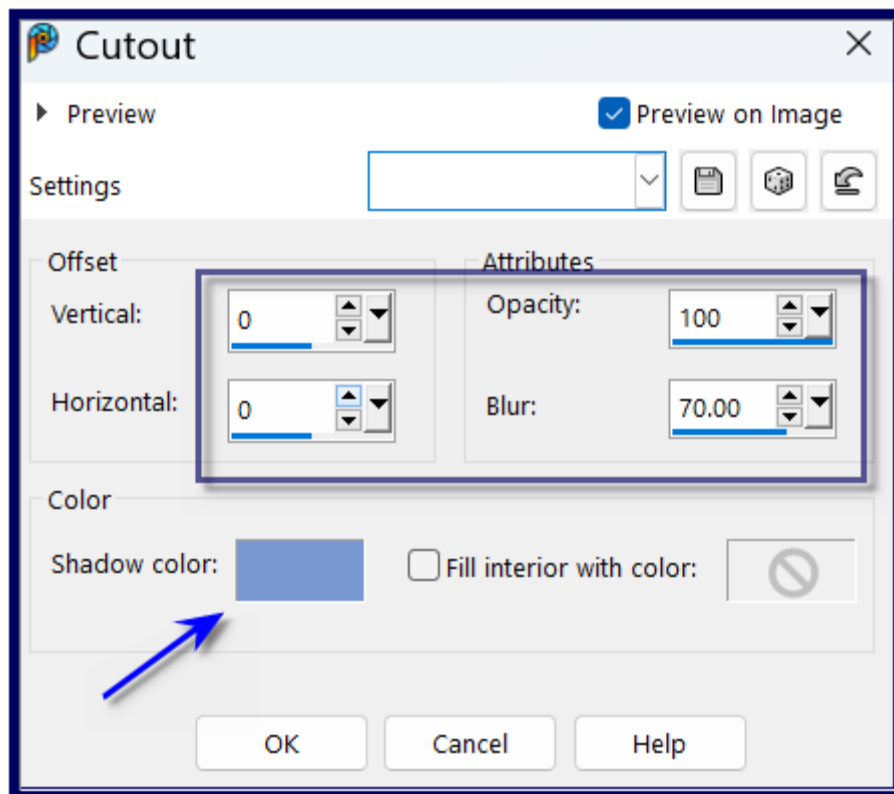
Effects/3D Effects/Drop Shadow

Step Ten:

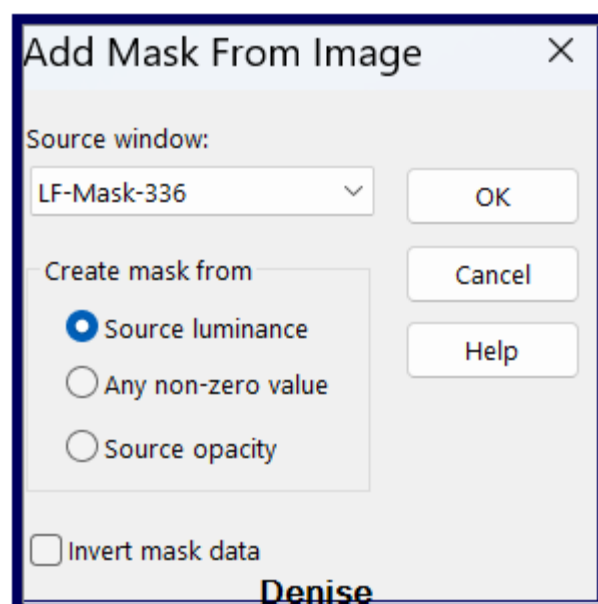
Selections/Select All

Image/Add Borders/5 pixels Background Colour #7997d1

Effects/3D Effects/Cutout as follows:



Selections/Select All
 Image/Add Borders/50 pixels/#7997d1
 Selections/Invert
 Promote Selection to Layer
 Layers/New Raster Layer
 Flood fill with Foreground Gradient
 Layers/New Mask Layer/From Image (find
 100201074151397205354489.jpg) as follows:



Layers/Merge/Merge Group
Effects/Edge Effects/Enhance
Effects/3D Effects/Drop Shadow
Selections/Select None

Step Eleven:

Maximise main image
Edit/Copy Edit/Paste as New Layer
Place to the left of the Layer
Add an appropriate drop shadow
Maximise Deco of your choice
Edit/Copy Edit/Paste as New Layer
Place in bottom right corner
I changed the Blend to Luminance Legacy
Layers/Duplicate
Image/Mirror/Horizontal
Layers/Merge Down
Add an appropriate drop shadow

Step Twelve:

Maximise Signature.png
Edit/Copy Edit/Paste as New Layer
Place at bottom of Layer
Layers/New Raster Layer
Add your Watermark
Image/Add Borders/2 pixels/Foreground Colour
Image/Resize/1000 pixels wide - height will adjust itself
File/Export/JPEG Optimiser/Compression Value 20

I hope you have enjoyed this tutorial
A big thank you to the ladies who test my Tutorials

TESTERS' RESULTS



MARIE



BETTY



SJOERTDJE

For other Versions of this Tutorial, please go to:

<http://escapingtopsp2.altervista.org/SummerDaysVersions/SummerDaysVersions.html>



<https://escapingtopsp2.blogspot.com/>