

This tutorial is written by Denise D. on 10th September, 2024
from my own ideas.

Any resemblance to other tutorials is co-incidental and unintentional.
If you wish to share my Tutorials, you **MUST** obtain my permission first.
All I ask is that you advise me and credit for the tutorial is given to me and
linked to

<http://escapingtopsp2.altervista.org/Home/homeb.html>

If you wish to join my mailing list, please go to:

<https://groups.google.com/g/escaping-to-psp3>

Please do not upload any of my completed Tutorial images onto sites
such as Fotki, Pinterest, Photobucket or similar

BEAUTY 2024



<http://escapingtopsp2.altervista.org/Beauty2024/Beauty2024.html>



Thank you Inge-Lore, Michele B., Sylviane and Vera Mendes for these
Translations



Click on the Box to download Supplies

Supplies

You will need to supply:

A main image

A Mist image

Thank you VM Tubes for the use of your image

Supplies included with the Tutorial

Callitubes-750flores.psp
D.D.Checkerboard.jpg
9goldSnowFlakeLg_MzT.png
D.D.Text.png
D.D.Deco1.png
D.D.Deco2.png
Signature.png

Selections:

D.D.Beauty1.2024
D.D.Beauty2.2024
D.D.Beauty3.2024
D.D.Beauty4.2024

Plugins:

MuRa's Meister
L & K landksiteofwonders
Simple

Filters Unlimited 2.0/Toadies
Found here:



Double Click on the icon in your supplies folder to install this Preset in your Plugin.

Notes:

This Tutorial was created in PSP2020

.... **other versions may need adjustment**

Some of the graphics may be from Free to Use sites or Share Groups.

If you are the creator of one of these please let me know so that appropriate credit can be given.

No infringement of copyright is intended or intentional.

Before opening PSP, download plugins and install

Some helpful information:

You can change the blend mode, opacity and drop shadow, as well as colourise the materials, according to the tubes/colours you are using.

When applying the Resize with the All Layers option checked, this will be informed in the tutorial, otherwise, apply the resize with this option unchecked.

Remember always to save your work.

Whenever you reduce an image, apply Adjust/Sharpness/Sharpen, to maintain the sharpness of the image.

Some tools or features have other names in earlier versions of the PSP.

<http://escapingtopsp2.altervista.org/Home/homeb.html>

© Vera Mendes	Tools:	Old versions:
	Pick Tool	deformation
	Horizontal Mirror	Mirror
	Vertical Mirror	flip

**Please Note: Offset settings provided in this tutorial may vary according to size of your image.
Please adjust to suit.**

The settings remain the same throughout this Tutorial unless otherwise stated.

Set your Foreground colour to #f9ddb7

Set your Background colour to #ad1333

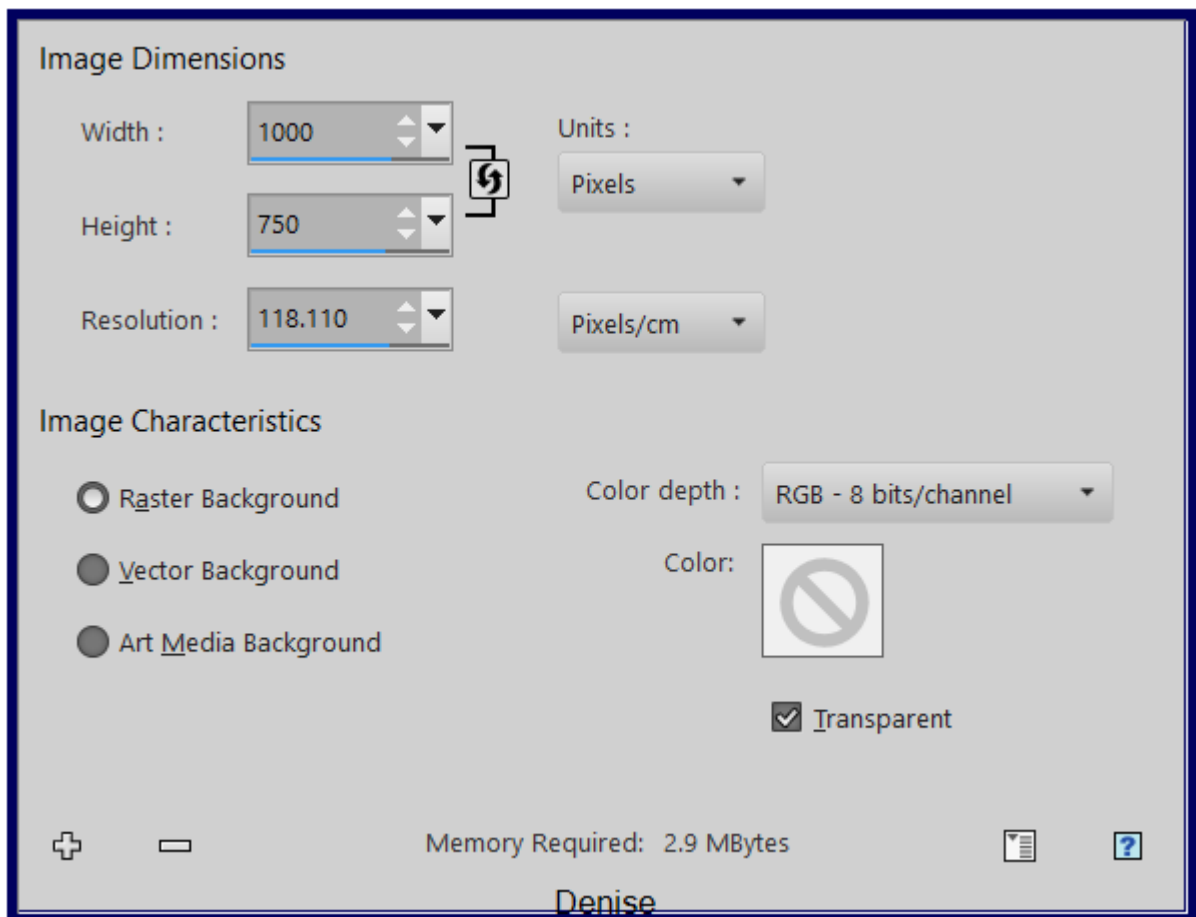
Step One:

Place Texture in PSP Texture Folder

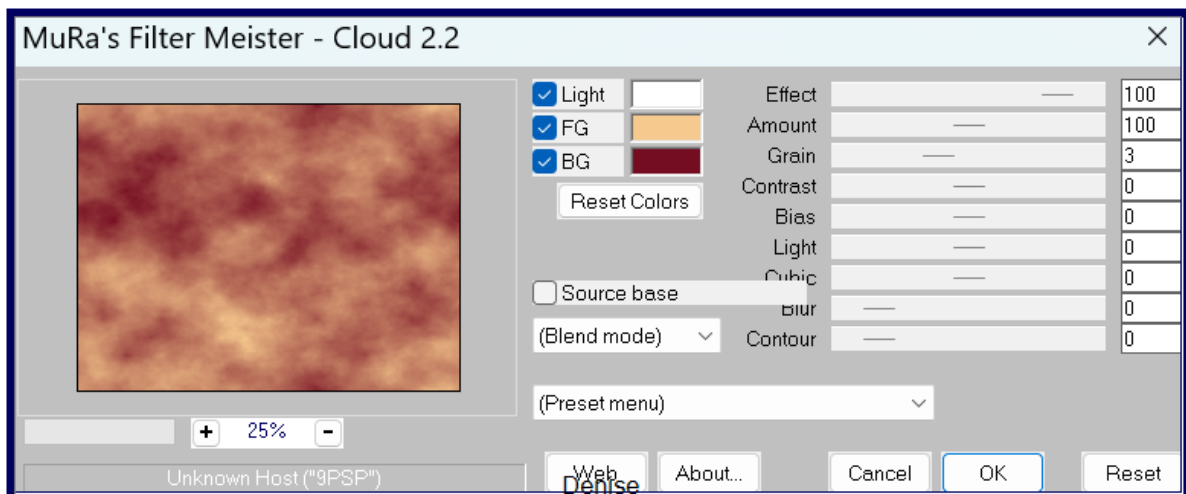
Place Selections in PSP Selection Folder

Open graphics in PSP, duplicate (Shift D) and close the original.

File/New/New Raster Layer 1000 pixels x 750 pixels as follows:



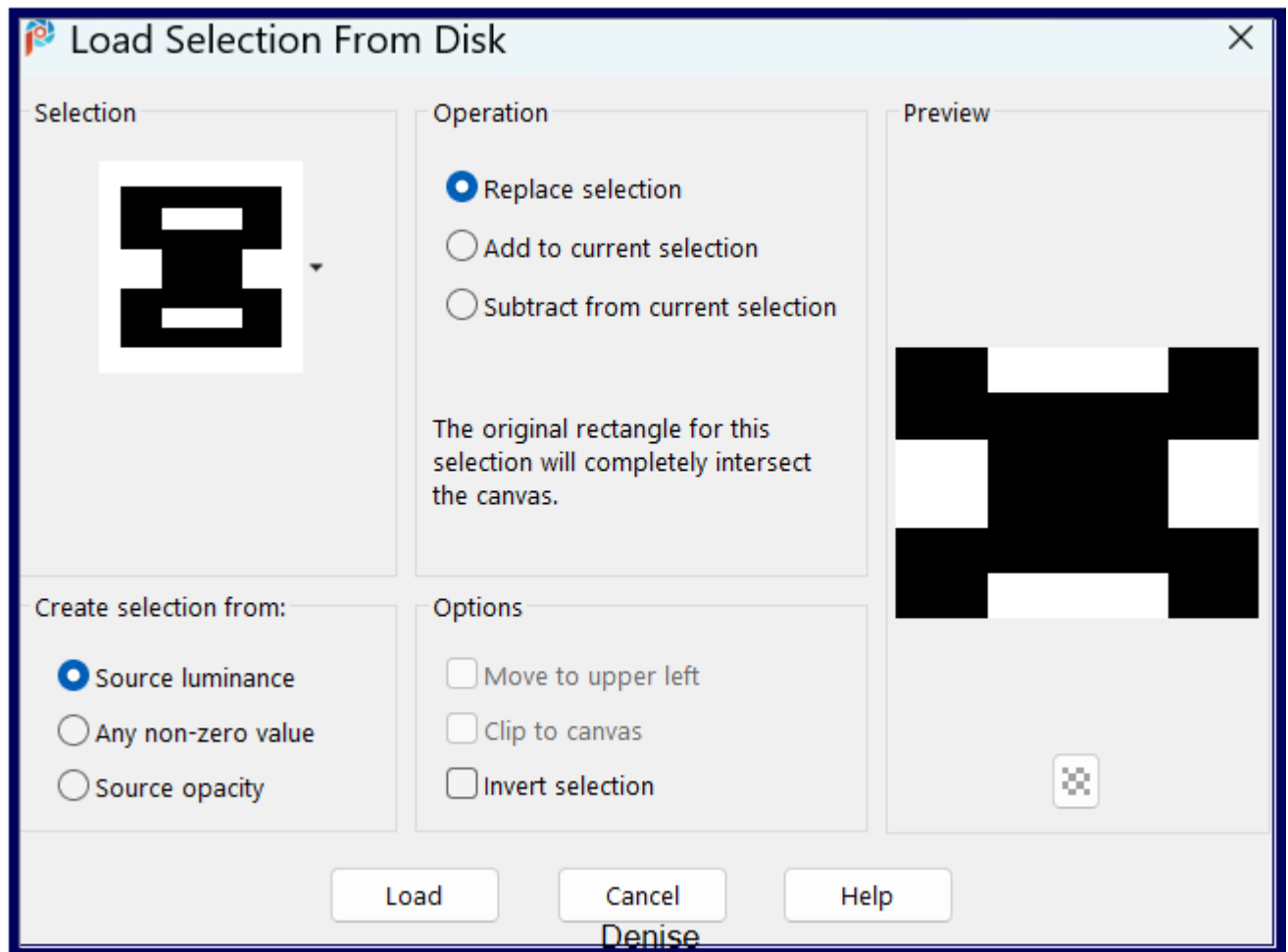
Effects/Plugins/MuRa's Meister/Cloud as follows:



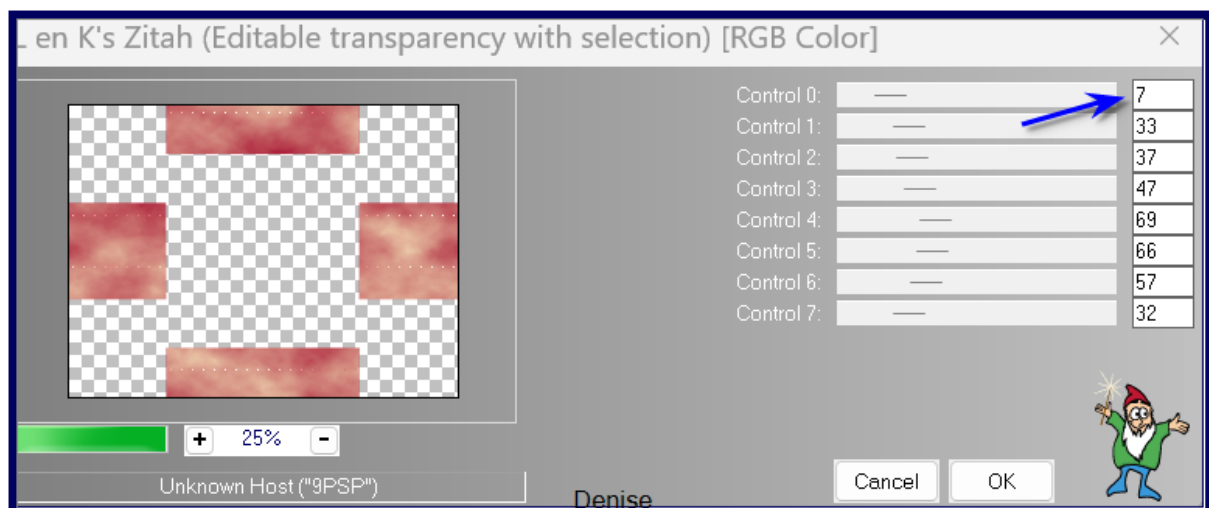
Step Two:

Maximise D.D.Checkerboard.jpg
 Edit/Copy Edit/Paste as New Layer
 Effects/Image Effects/Seamless Tiling/Default Settings
 Change Blend Mode to Overlay
 Selections/Load/Save Selections/Load Selection D.D.Beauty1.2024 from

Disk as follows;

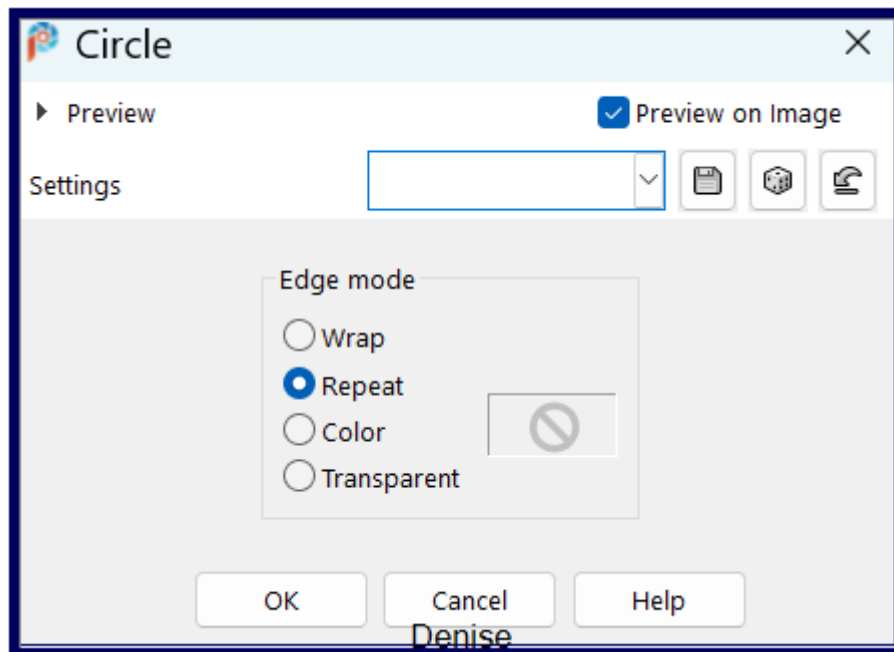


Select Raster 1 Layer
Promote Selection to Layer
Layers/Arrange/Bring to Top
Effects/Plugins/L & Klandksiteofwonders/Zitah as follows;

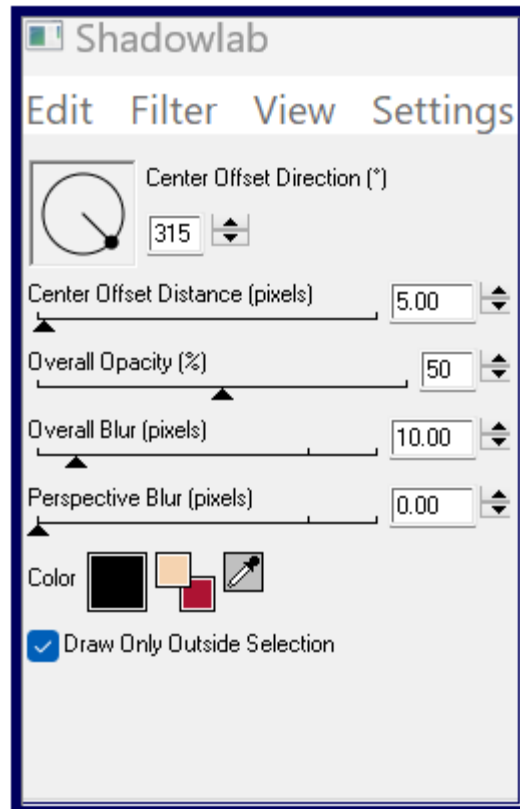


Effects/Edge Effects/Enhance More
Selections/Select None

Step Three:
Layers/Duplicate
Effects/Geometric Effects/Circle as follows:



Effects/Plugins/Eye Candy 4000/Shadowlab as follows:



Repeat Shadowlab/Direction 135

Step Four:

Layers/New Raster Layer

Selections/Load/Save Selection/Load Selection D.D.Beauty2.2024 from
Disk

Maximise Callitubes-750flores.psp or image of your choice

Edit/Copy Edit/Paste into Selection

Selections/Select None

Adjust/Sharpness/Sharpen More

Add a Drop Shadow if necessary

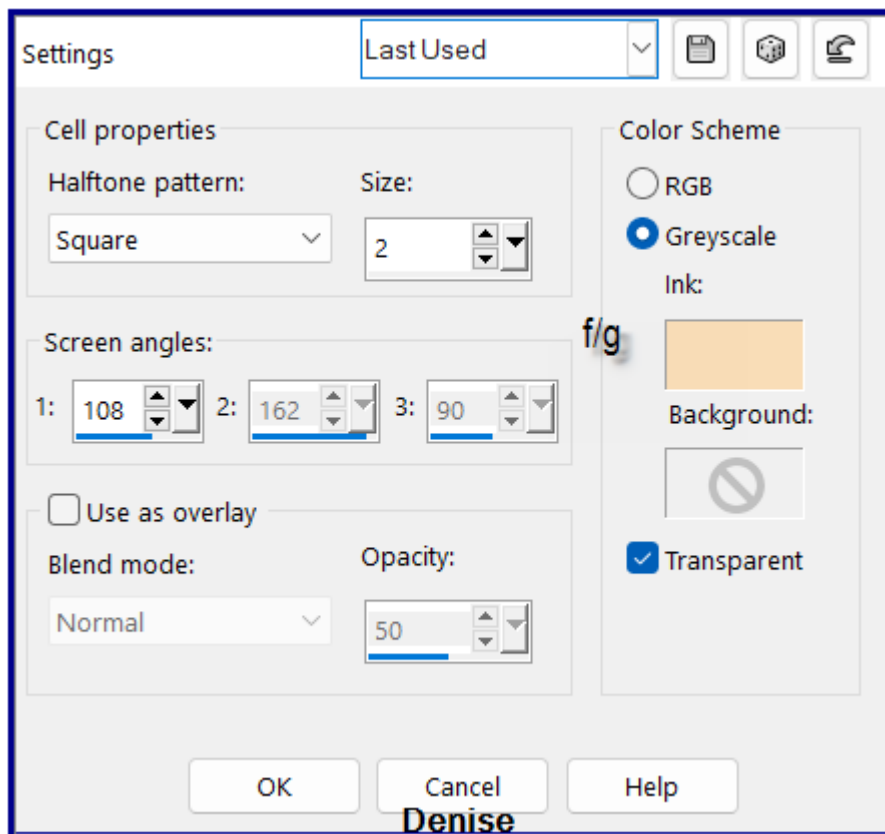
Select Raster 1 Layer

Selections/Load/Save Selection/Load Selection D.D.Beauty3.2024 from
Disk

Promote Selection to Layer

Layers/Arrange/Bring to Top

Effects/Artistic Effects/Halftone as follows:



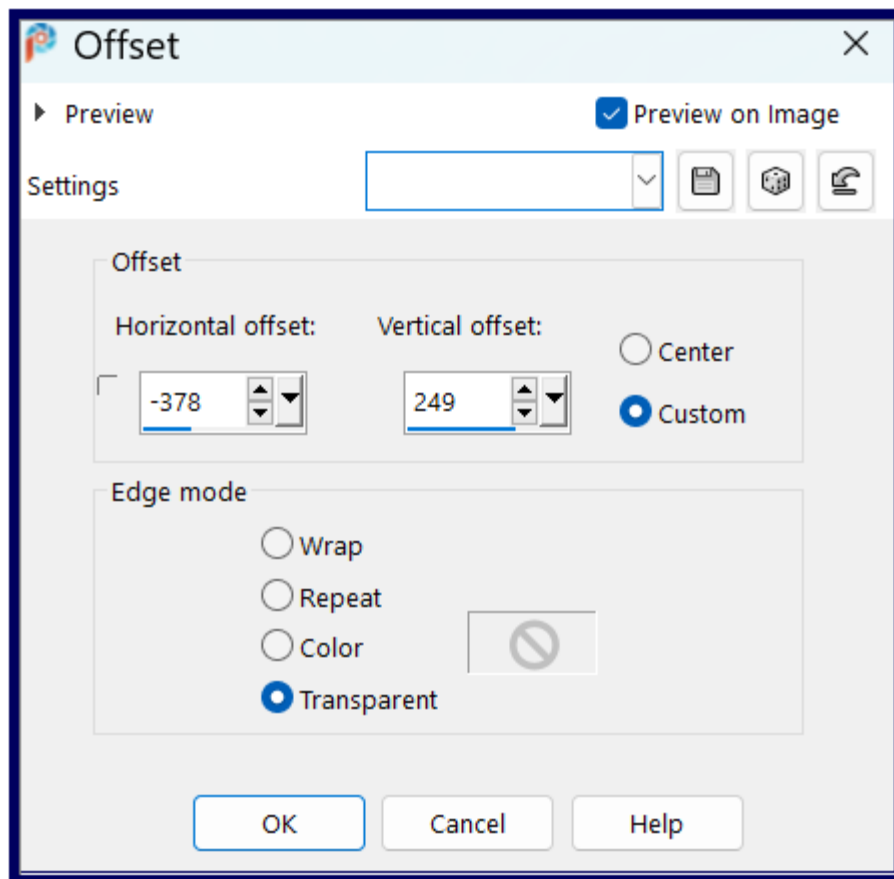
Selections/Select None
 Effects/Plugins/Eye Candy 4000/Shadowlab BUT change Direction to 315
 Effects/Plugins/Simple/Top Left Mirror
 Change Opacity to 75%

Step Five:

Maximise D.D.Deco1.png
 Edit/Copy Edit/Paste as New Layer
 Layers/Duplicate
 Layers/Merge/Merge Down
 Maximise D.D.Deco2.png
 Edit/Copy Edit/Paste as New Layer
 Layers/Duplicate
 Layers/Merge/Merge Down
 Repeat Merge Down once
 Effects/Plugins/Eye Candy 4000/Shadowlab

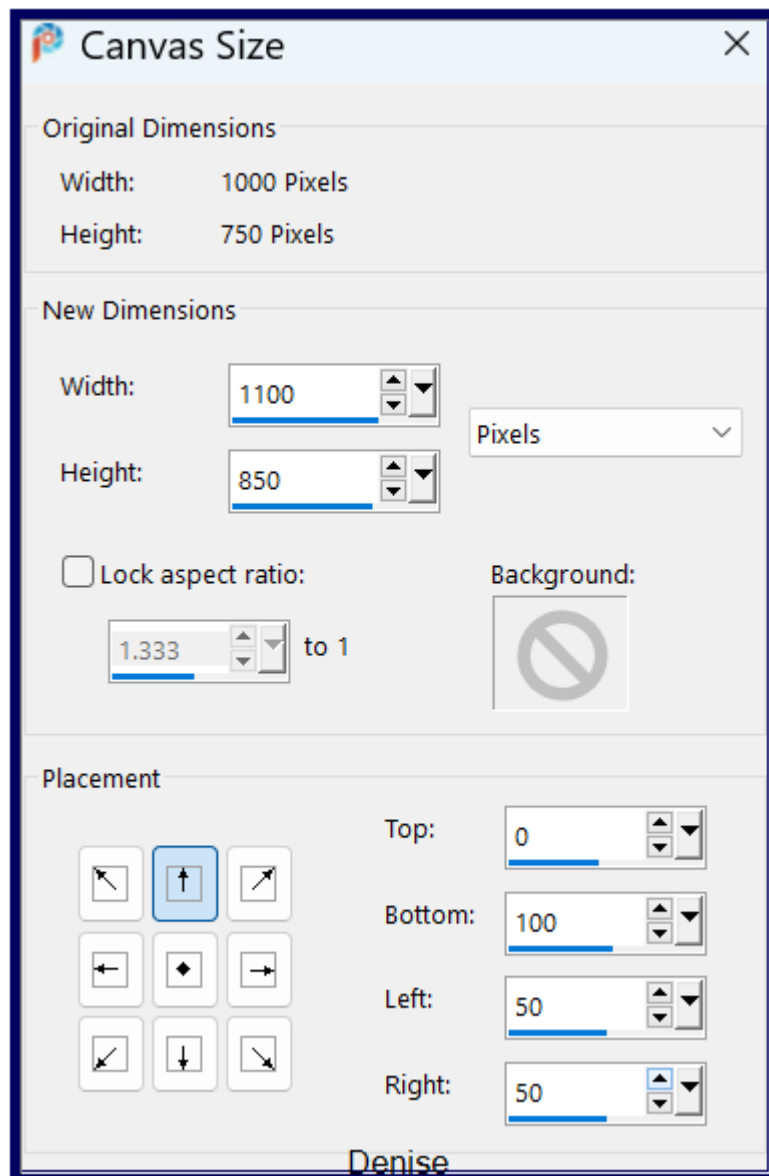
Step Six:

Maximise 9goldSnowFlakeLg_MzT.png
 Edit/Copy Edit/Paste as New Layer
 Effects/Image Effects/Offset as follows;



Effects/Plugins/Simple/Top Left Mirror
Effects/Plugins/Eye Candy 4000/Shadowlab

Step Seven:
Select Raster 1
Duplicate
Image/Canvas Size as follows:

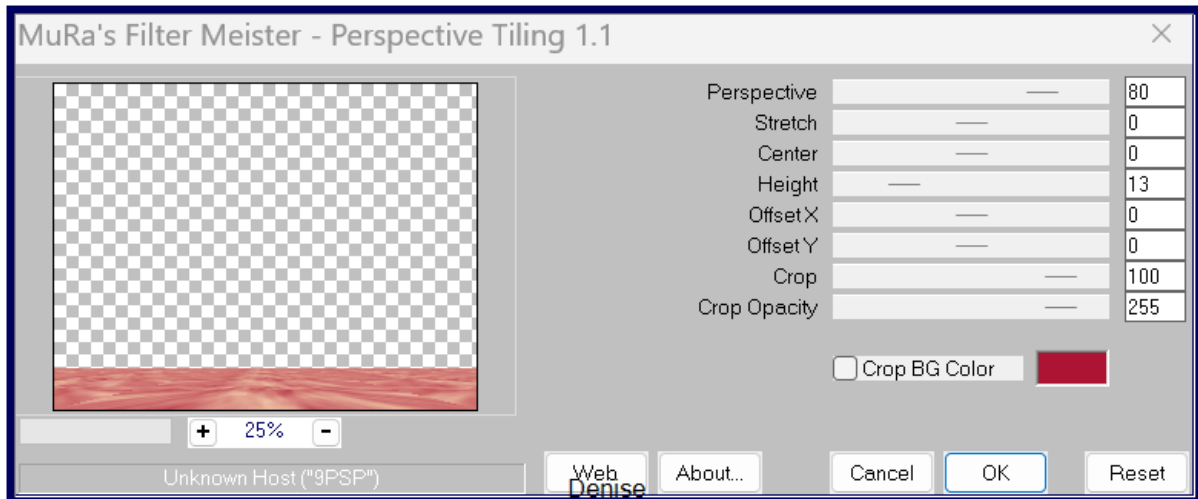


Still on Copy of Raster 1
Effects/Plugins/Eye Candy 4000/Shadowlab
Repeat Shadowlab/Direction 135

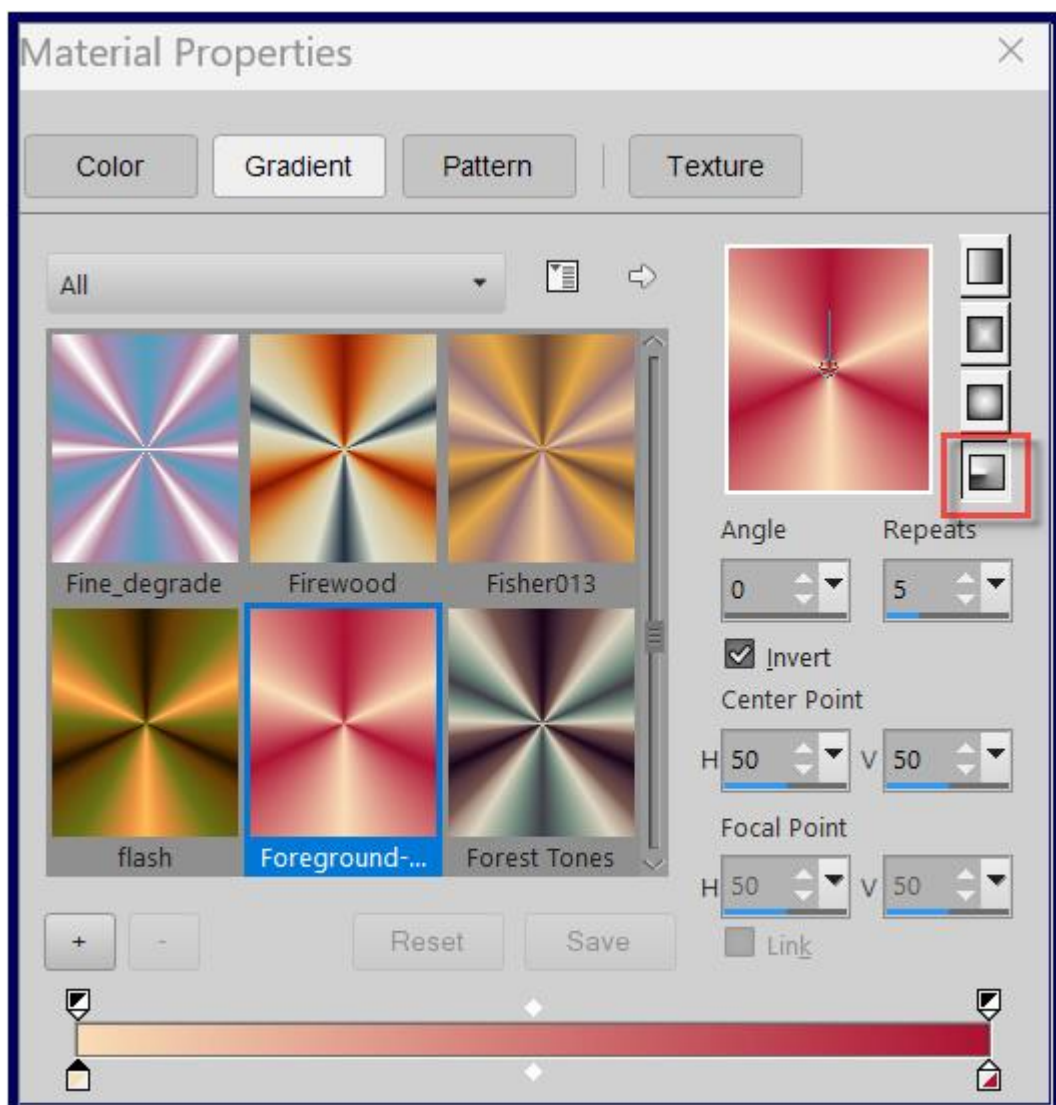
Step Eight:

Select Raster 1

Layers/Arrange/Move Up one Layer to on top of Copy of Raster 1 Layer
Effects/Plugins/MuRa's Meister/Perspective Tiling as follows:



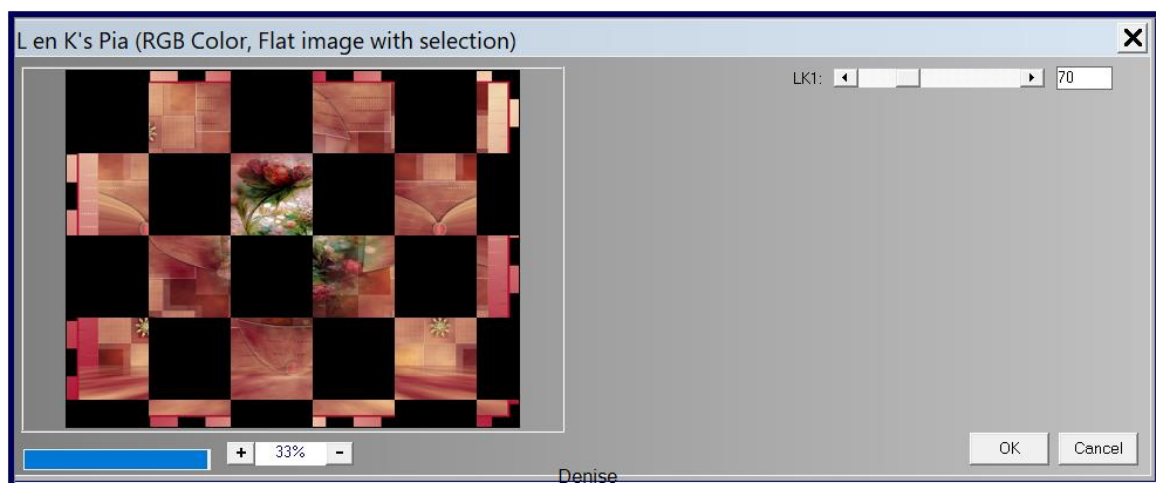
Layers/New Raster Layer
 Layers/Arrange/Send to Bottom
 Change Foreground Colour to Foreground/Background/Radial Gradient as follows:



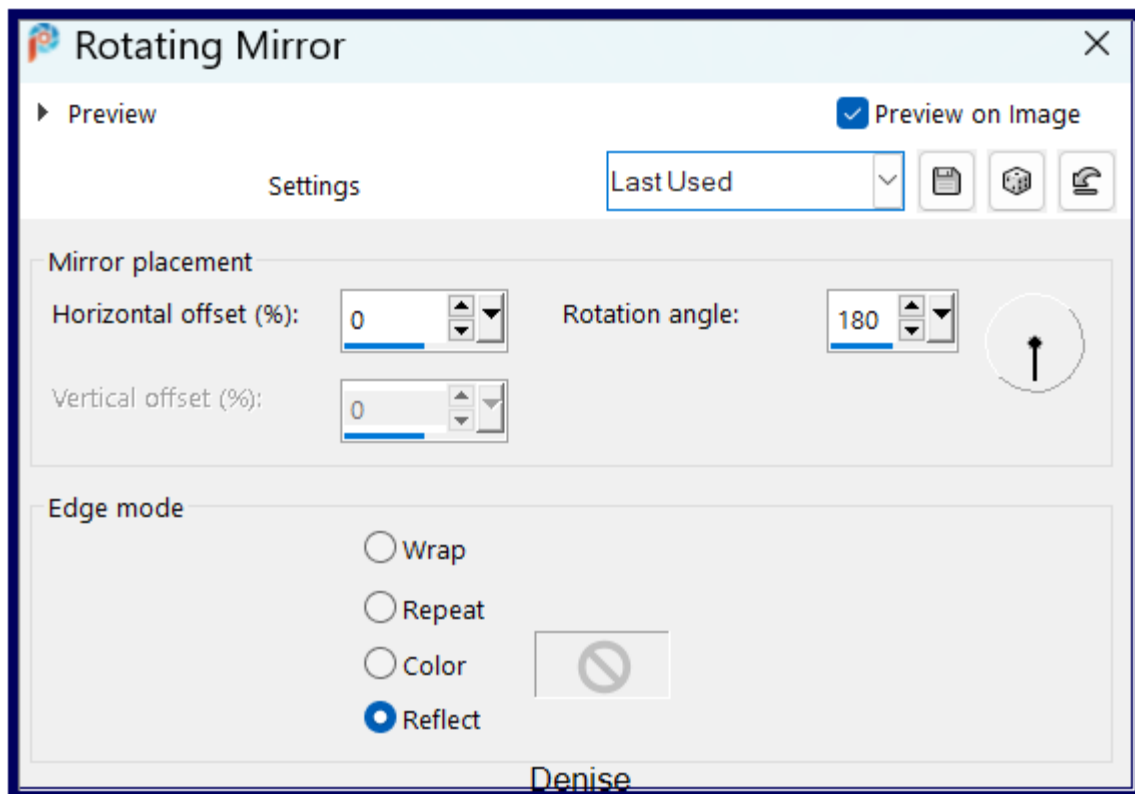
Flood fill with Foreground Gradient
Effects/Plugins/L & K landksiteofwonders/Zitah
Effects/Edge Effects/Enhance More

Step Nine:

Select Layer at top of pile
Maximise D.D.Text.png
Edit/Copy Edit/Paste as New Layer
Place where it suits your image
Image/Add Borders/5 pixels/Foreground Colour
Selections/Select All
Image/Add Borders/25 pixels/White
Selections/Invert
Flood fill with Foreground Gradient
Effects/Plugins/L & K landksiteofwonders/Pia as follows:



Effects/Reflection Effects/Rotating Mirror as follows:



Selections/Select None

Step Ten:

Image/Add Borders/5 pixels/Foreground Colour

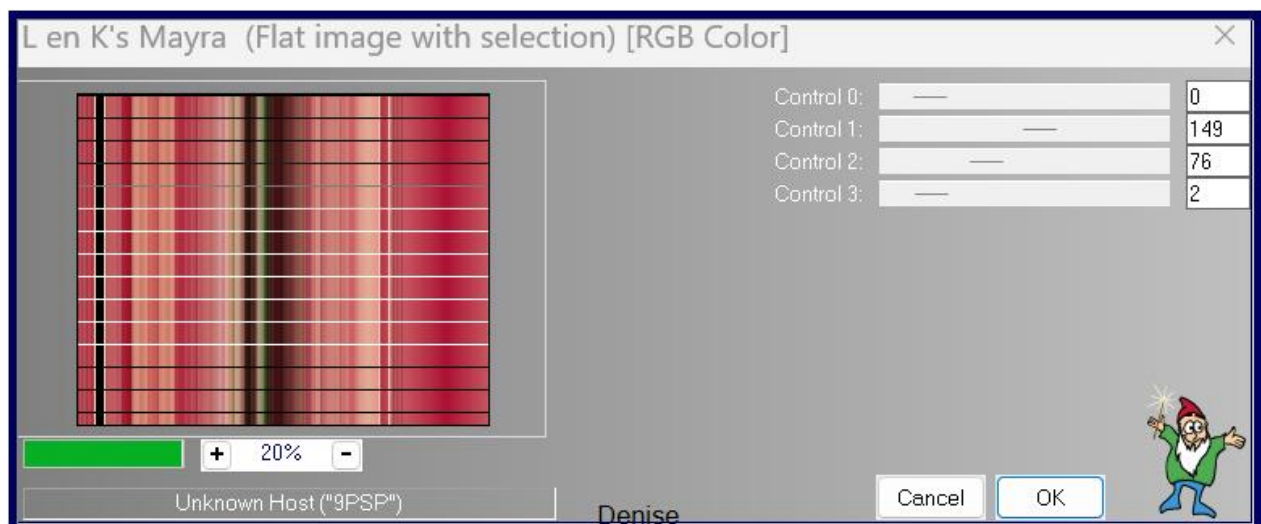
Selections/Select All

Image/Add Borders/50 pixels/White

Selections/Invert

Flood fill with Foreground Gradient

Effects/Plugins/L & K landksiteofwonders/Mayra as follows:

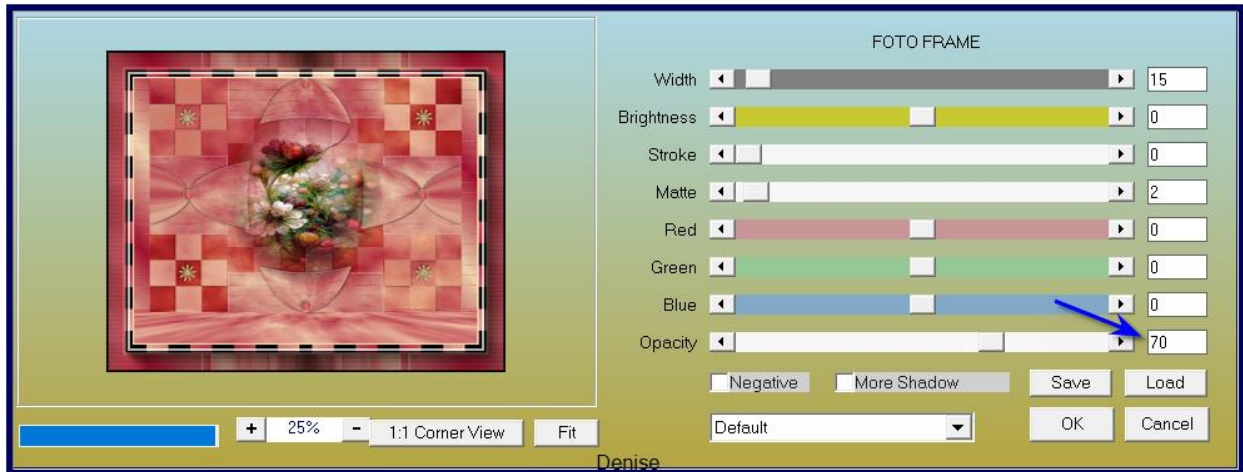


Effects/Reflection Effects/Rotating Mirror/Default Settings

Selections/Select None

Step Eleven:

Effects/Plugins/AAA Frames/Foto Frame as follows:



Maximise your main image
Edit/Copy Edit/Paste as New Layer
Place at bottom right of Layer
Effects/Plugins/Eye Candy 4000/Shadowlab

Step Twelve:

Maximise Signature.png
Edit/Copy Edit/Paste as New Layer
Place at bottom of Layer
Add your own watermark if you wish
Layers/Merge/Merge Visible

OPTIONAL STEP:

Effects/Plugins/AAA Filters/Custom Filter/Landscape

Image/Resize/1000 pixels wide - height will adjust itself
File/Export/JPEG Optimiser/Compression Value 20

I hope you have enjoyed this tutorial
A big thank you to the ladies who test my Tutorials

TESTERS' RESULTS



MARIE



BETTY



SJOERTDJE

For other Versions of this Tutorial, please go to:

<http://escapingtopsp2.altervista.org/Beauty2024Versions/Beauty2024Versions.html>



<https://escapingtopsp2.blogspot.com/>