

This tutorial is written by Denise D. on 1st July, 2024  
from my own ideas.

Any resemblance to other tutorials is co-incidental and unintentional.  
If you wish to share my Tutorials, you **MUST** obtain my permission first.  
All I ask is that you advise me and credit for the tutorial is given to me and  
linked to

<http://escapingtopsp2.altervista.org/Home/homeb.html>

If you wish to join my mailing list please go to:

<https://groups.google.com/g/escaping-to-psp3>

Please do not upload any of my completed Tutorial images onto sites  
such as Fotki, Pinterest, Photobucket or similar

## CHRISTMAS FUN



<http://escapingtopsp2.altervista.org/ChristmasFun/ChristmasFun.html>



Thank you Inge-Lore, MicheleB, Vera Mendes and Sylviane for these Translations



Click on the Box to download Supplies

**You will need:**

**A main tube of Santa Clause/Sleigh approximately 350 x 300 pixels**

**A tube of children approximately 500 pixels by 300 pixels**

**and some complimentary tubes**

*Thank you Mina for the use of your image*

**Supplies included in this Tutorial are:**

DI\_winter15.pspimage  
AH\_39\_1501\_10.pspimage  
mentali-misted1179.pspimage  
You can join this Group at:

[https://groups.yahoo.com/neo/groups/Creative\\_for\\_fun/info](https://groups.yahoo.com/neo/groups/Creative_for_fun/info)

Deco.png  
D.D.JoyousNoelBorder.png  
D.D.Stars.png

Signature.png

**Mask:**

Brujita\_mask\_0016.jpg

**Pattern:**

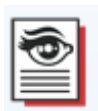
SILVER sf silverbead.jpg

**Plugins:**

Filters Unlimited. 2.0/Toadies  
VM Natural  
MuRa's Meister  
Eye Candy 4000  
Filters Unlimited 2.0/Graphics Plus  
AAA Filters  
Found here:



AND



Double Click on the icon in your supplies folder to install this Preset

in your Plugin.

**Notes:**

This Tutorial was originally created in PSPX1 and updated in Corel 2020

.... **other versions may need adjustment**

Some of the graphics may be from Free to Use sites or Share Groups.

If you are the creator of one of these please let me know so that appropriate credit can be given.

No infringement of copyright is intended or intentional.

Before opening PSP, download plugins and install

***Some helpful information:***

*You can change the blend mode, opacity and drop shadow, as well as colourise the materials, according to the tubes/colours you are using.*

*When applying the Resize with the All Layers option checked, this will be informed in the tutorial, otherwise, apply the resize with this option unchecked.*

*Remember always to save your work.*

*Whenever you reduce an image, apply Adjust/Sharpness/Sharpen, to maintain the sharpness of the image.*

*Some tools or features have other names in earlier versions of the PSP.*

*<http://escapingtopsp2.altervista.org/Home/homeb.html>*

© Vera Mendes	<b>Tools:</b>	<b>Old versions:</b>
	Pick Tool	deformation
	Horizontal Mirror	Mirror
	Vertical Mirror	flip

**Please Note:** Offset settings provided in this tutorial may vary according to size of your image.  
Please adjust to suit.

**The settings remain the same throughout this Tutorial unless**

**otherwise stated.**

Set your Foreground colour to #00b1ba

Set your Background colour to #c32d11

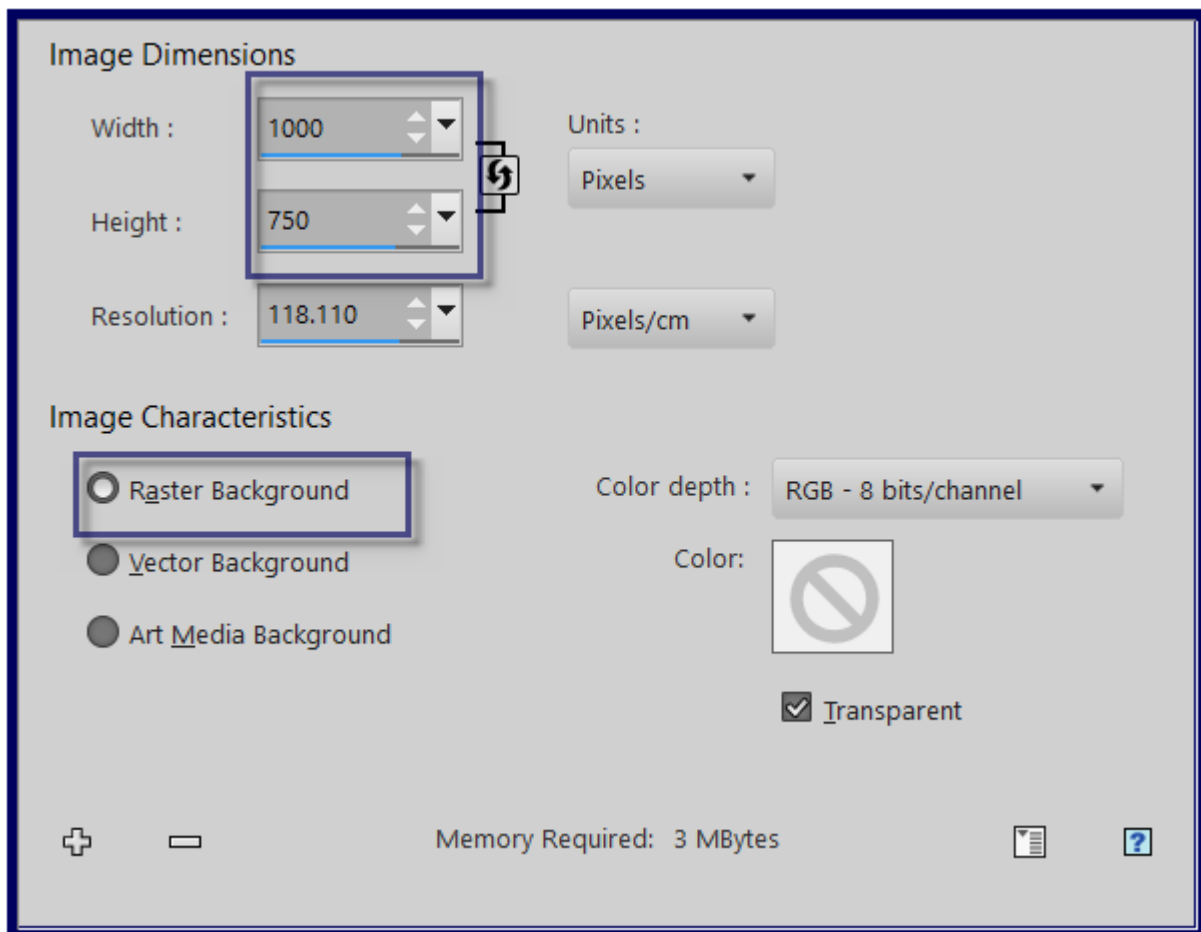
**Step One:**

*Place Pattern in PSP Pattern Folder*

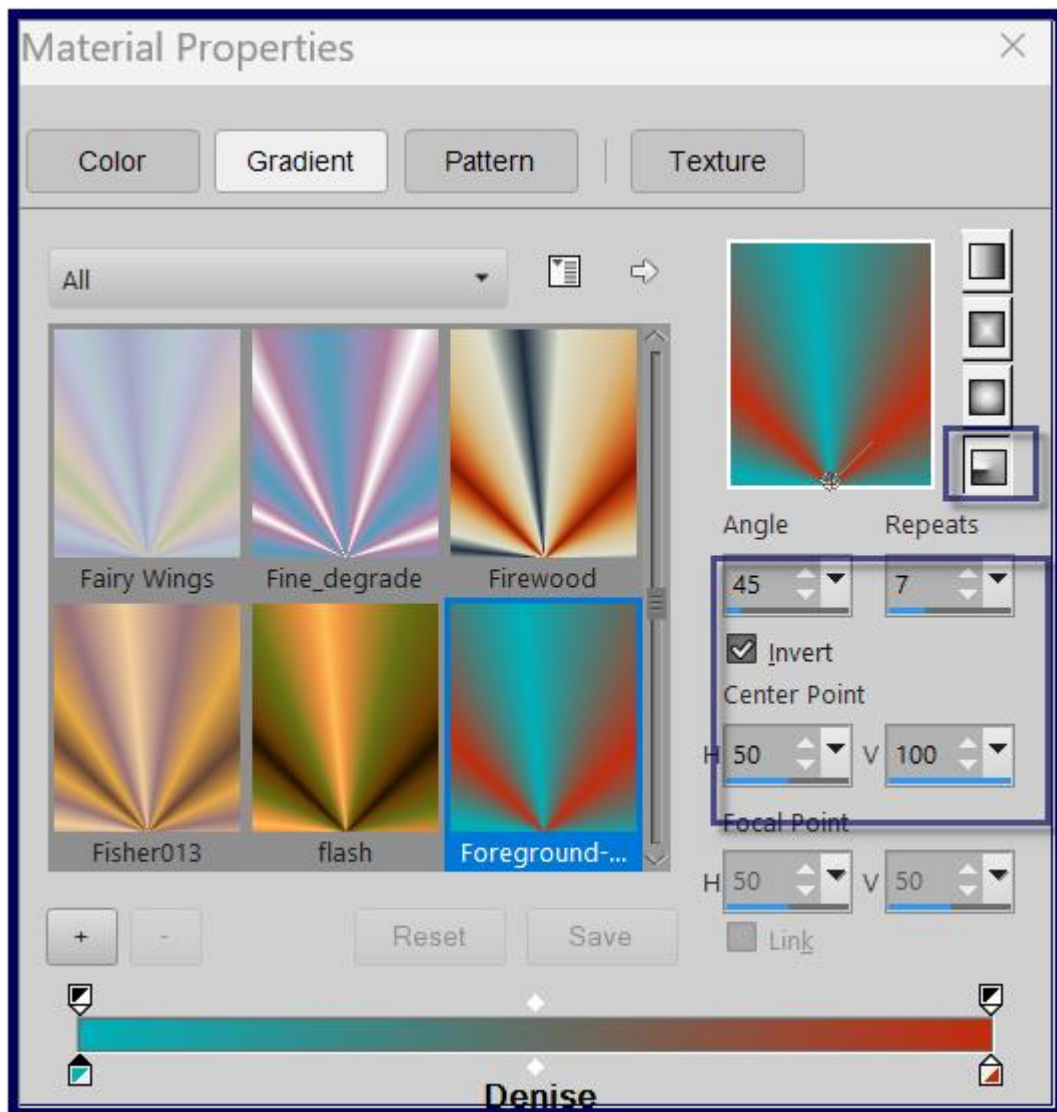
*Place Mask in PSP Mask Folder*

*Open graphics in PSP, duplicate (Shift D) and close the original.*

File/New/New Image 1000 pixels x 750 pixels as follows:



Change Foreground Colour to Foreground/Background Radial Gradient as follows:



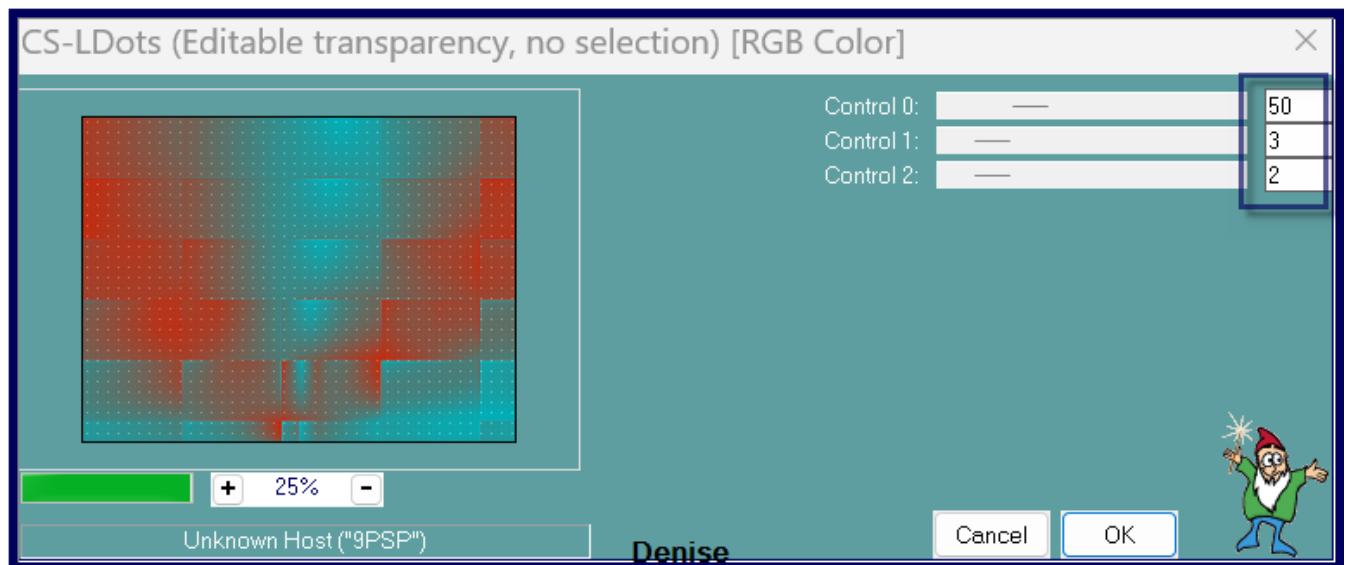
Flood fill with Foreground Gradient

### Step Two:

Effects/Plugins/Filters Unlimited 2.0/Toadies/Weaver/Default Settings

Effects/Edge Effects/Enhance More

Effects/Plugins/Caroline & Sensibility/CS-LDots as follows:



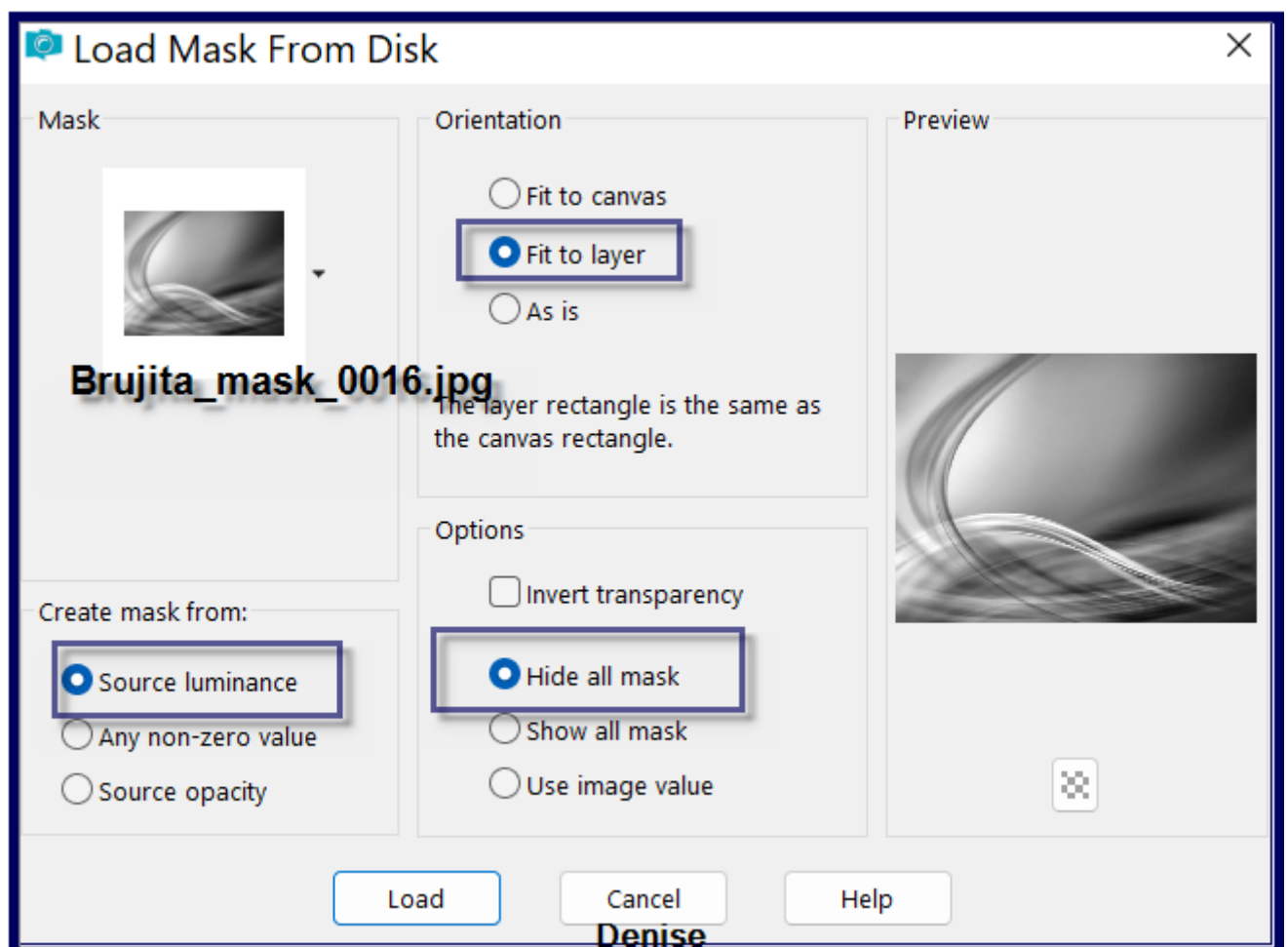
Effects/Edge Effects/Dilate

### Step Three:

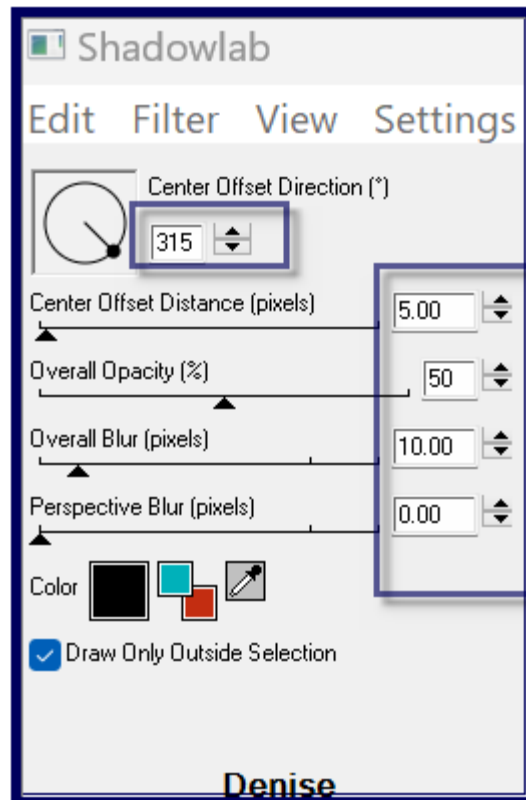
Layers/New Raster Layer

Flood fill with Foreground Gradient

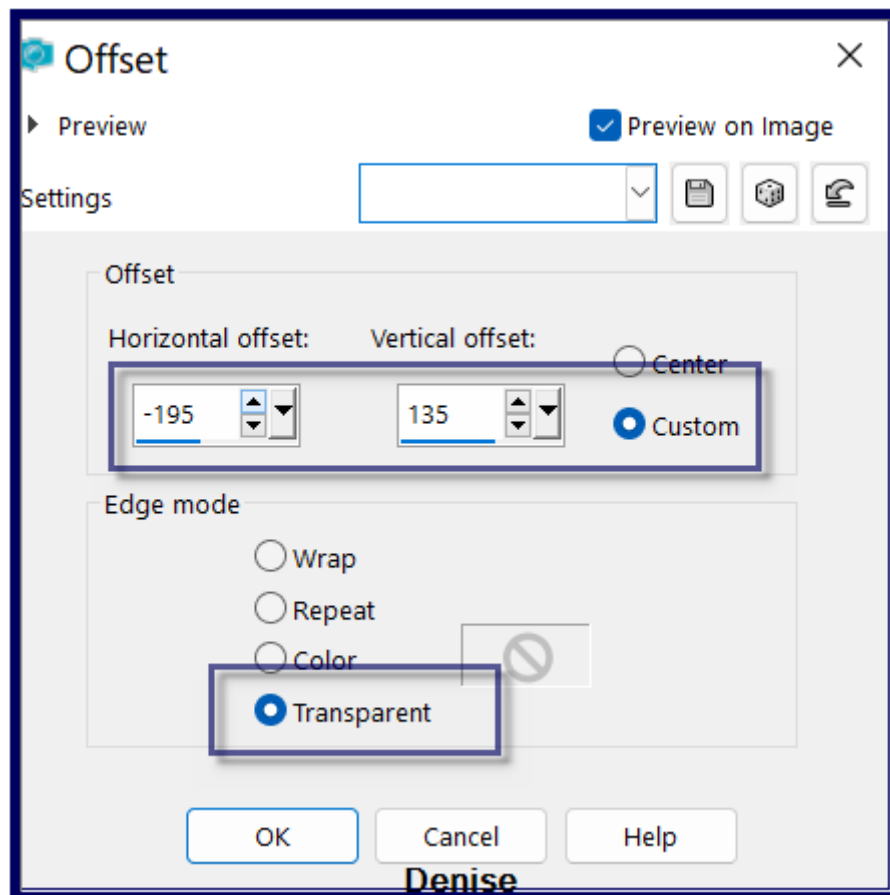
Layers/Load/Save Mask/Load Mask from Disk as follows:



Effects/Edge Effects/Enhance More  
Layers/Merge/Merge Group  
Effects/Plugins/Eye Candy 4000/Shadowlab as follows:



**Step Four:**  
Maximise DI\_winter15.pspimage  
Edit/Copy   Edit/Paste as New Layer  
Effects/Image Effects/Offset as follows:



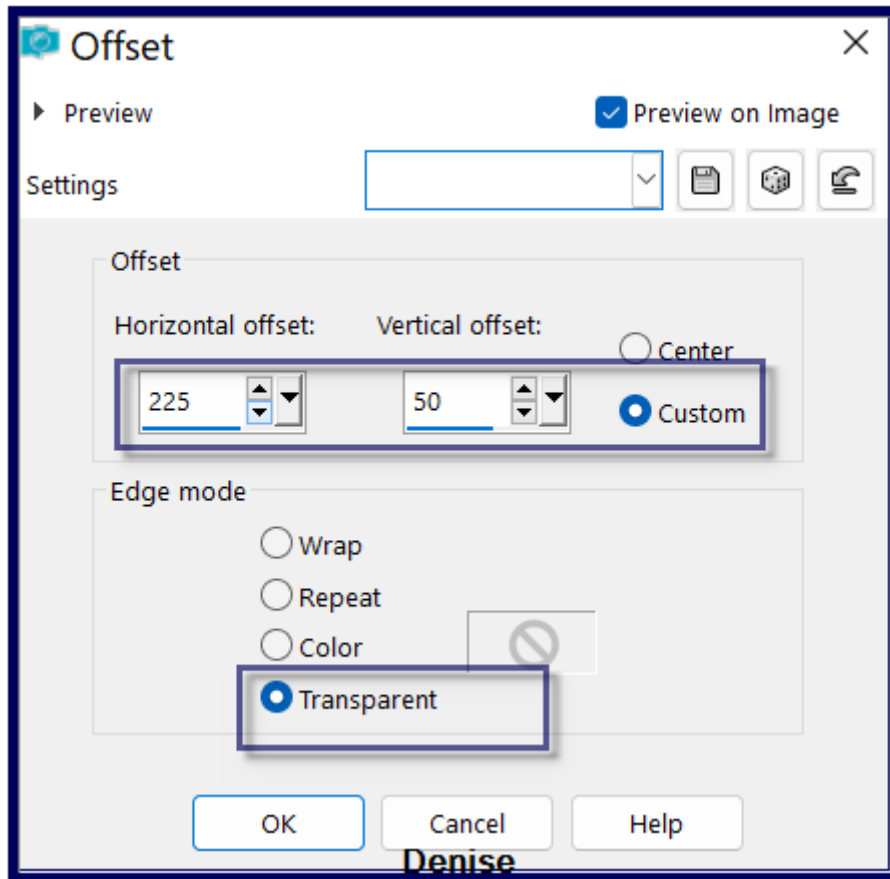
Change Blend Mode to Luminance Legacy

**Step Five:**

Maximise AH\_39\_1501\_10.pspimage

Edit/Copy Edit/Paste as New Layer

Effects/Image Effects/Offset as follows:



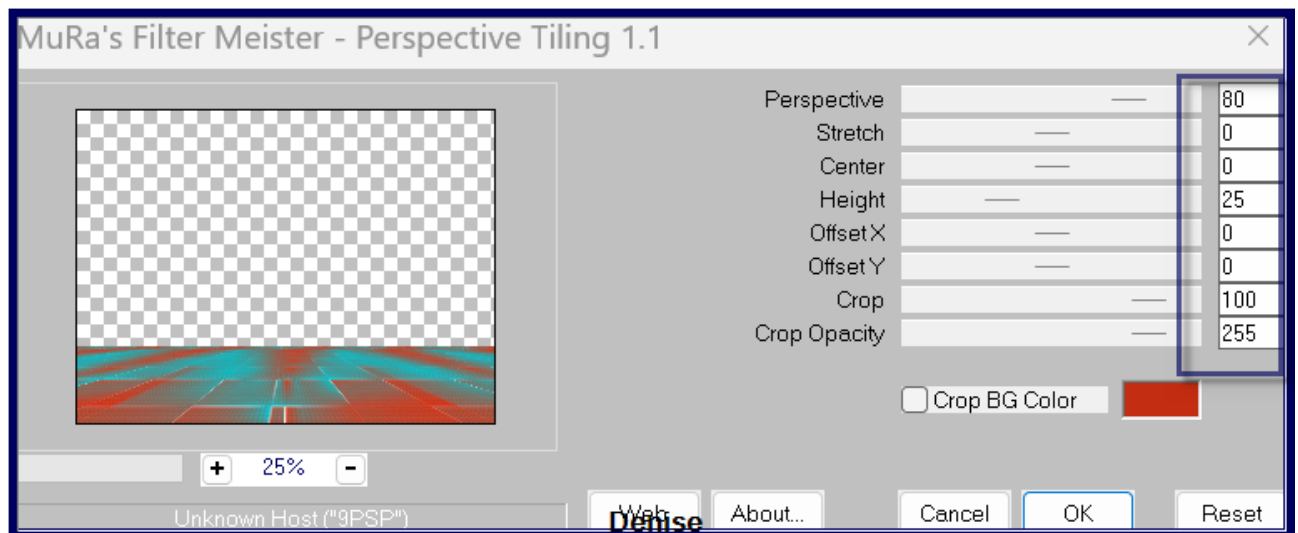
Change Blend Mode to Luminance Legacy  
Layer/Merge/Merge Down

### Step Six:

Maximise mentali-misted1179.pspimage  
Edit/Copy Edit/Paste as New Layer  
Leave where it is  
Change Opacity to 85%  
Maximise D.D.Stars.png  
Edit/Copy Edit/Paste as New Layer  
Objects/Align/Top

### Step Seven:

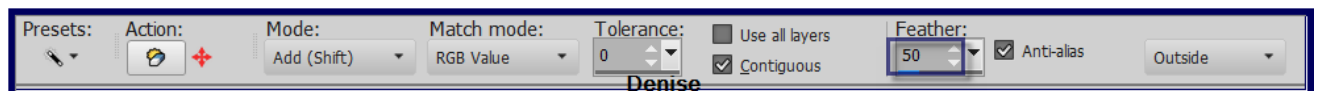
Select Raster 1  
Layers/Duplicate  
Effects/Plugins/MuRa's Meister/Perspective Tiling as follows:



Layers/Arrange/Bring to Top  
Effects/Reflection Effects/Rotating Mirror/Default Settings

### Step Eight:

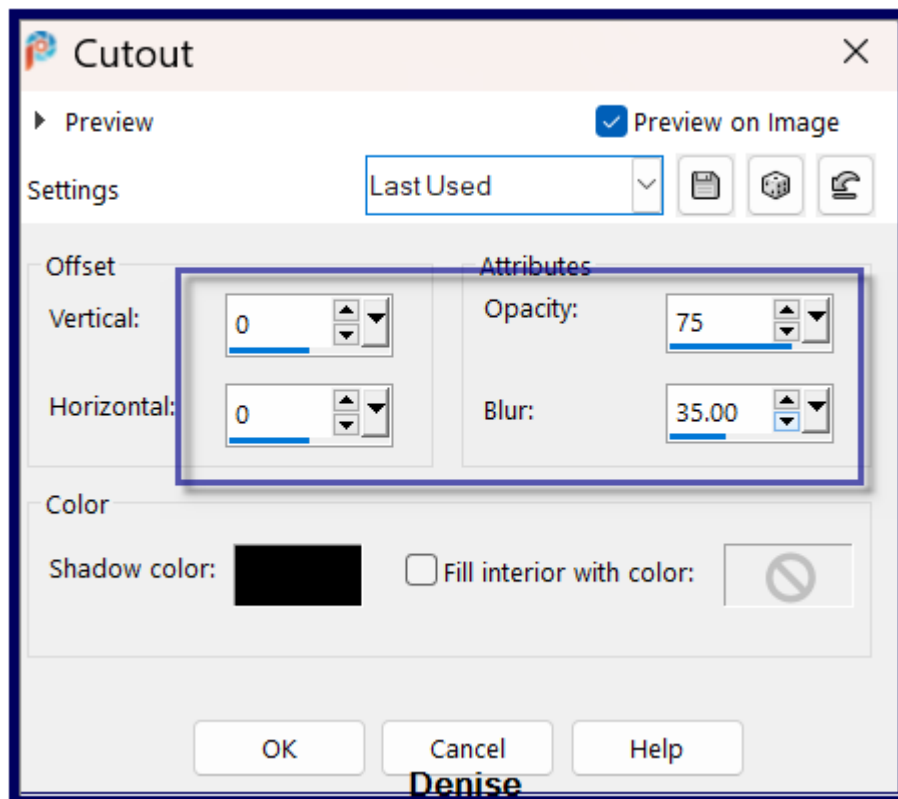
Magic Wand with the following settings:



Select the empty area in the Layer  
Hit delete 5 times  
Selections/Select None  
Maximise Santa sleigh image  
Edit/Copy Edit/Paste as New Layer  
Place to the left of the Layer near the cottage  
See my image for placement  
Effects/Plugins/Eye Candy 4000/Shadowlab

### Step Nine:

Layers/Merge/Merge Visible  
Edit/Copy Edit/Paste as New Image  
(keep this image in case you loose the image later in this tutorial)  
Selections/Select All  
Layers/New Raster Layer  
Effects/3D Effects/Cutout as follows:



### Step Eleven:

Image/Add Borders/12 pixels/White

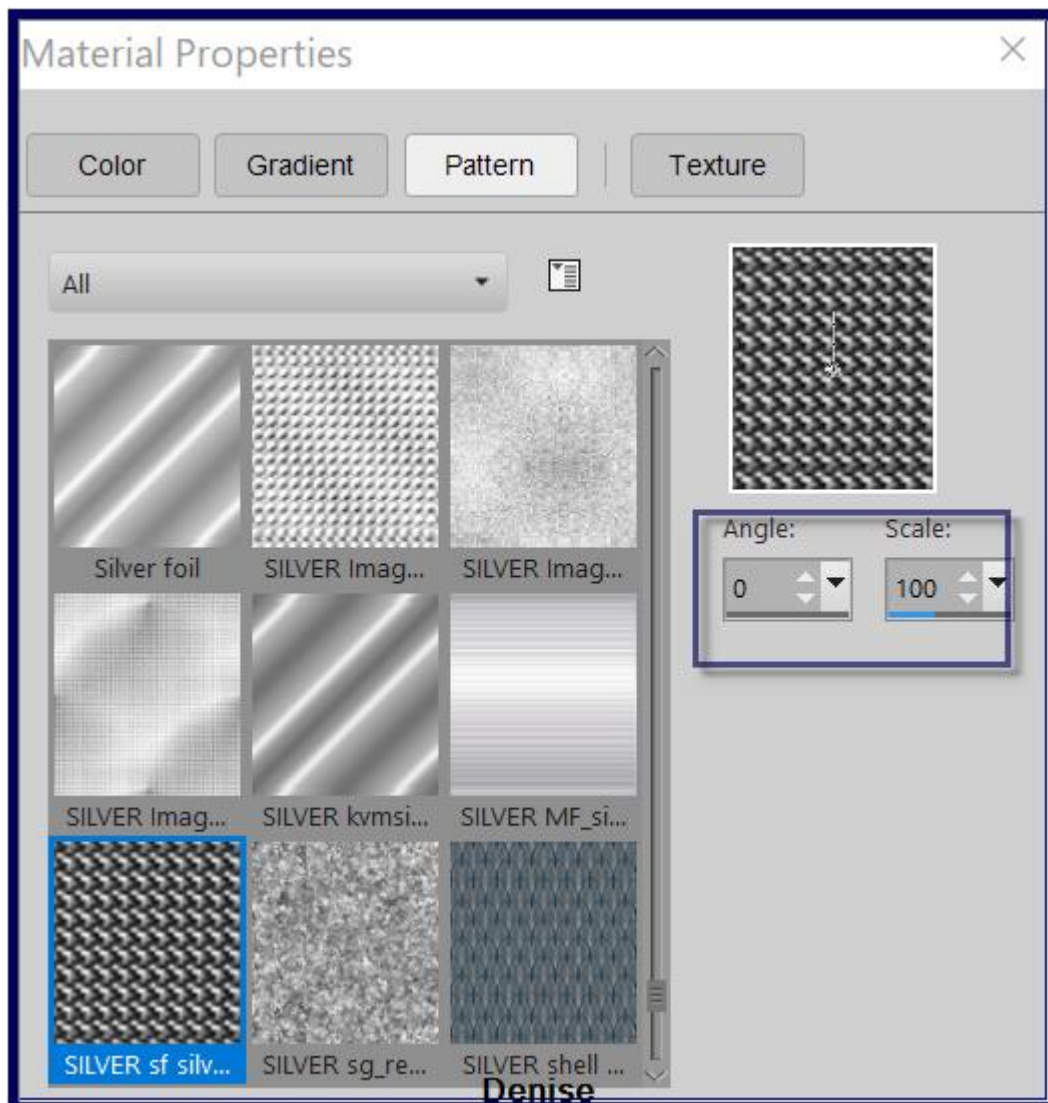
Selections/Invert

Edit/Paste into Selection

Copy should still be available to paste

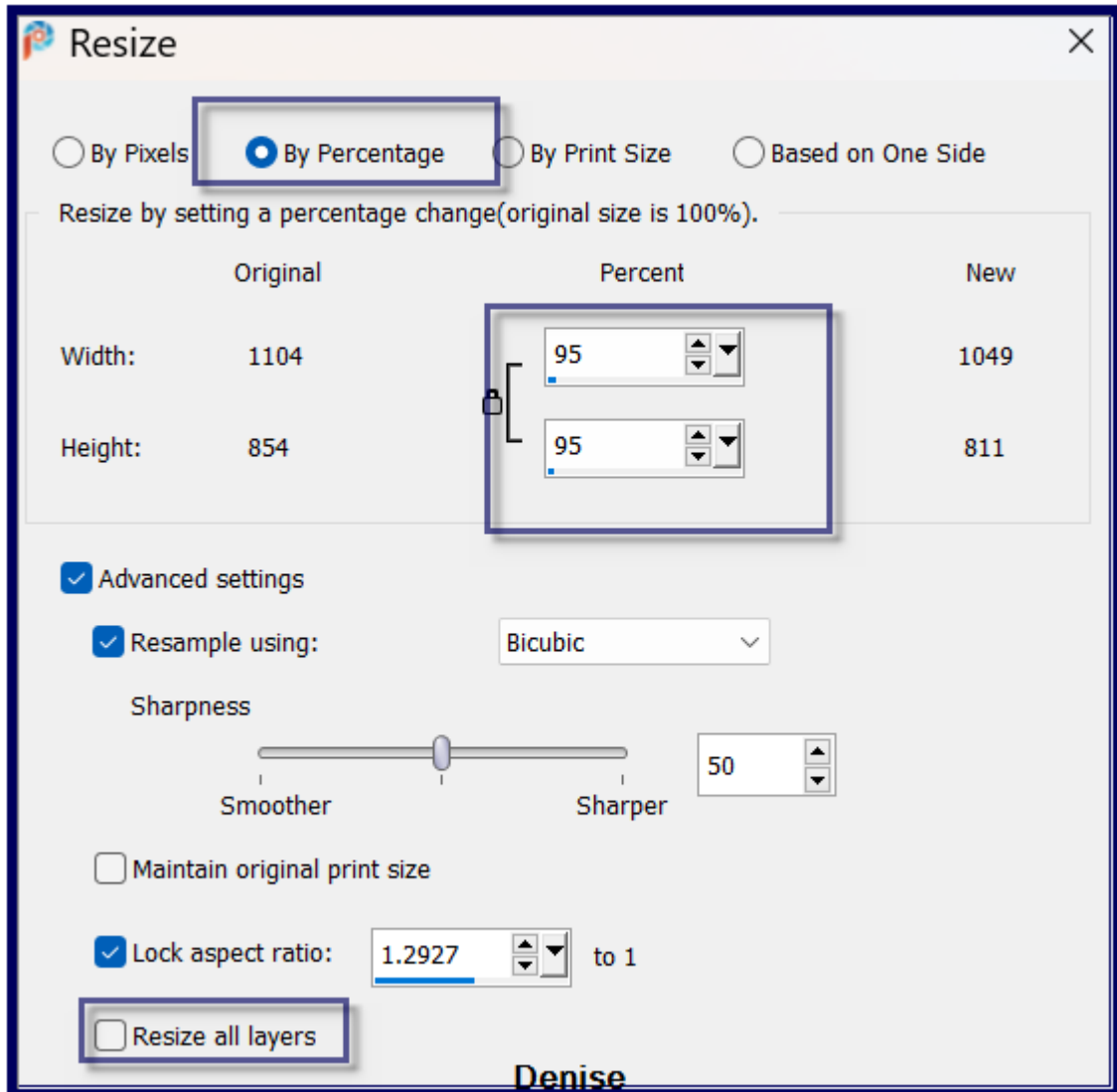
Effects/Plugins/Filters Unlimited 2.0/Graphics Plus/Cross Shadow/Default  
Setting

Change Background Colour to Pattern SILVER sf silverbead.jpg as follows:



Selections/Select All  
 Image/Add Borders/6 pixels/White  
 Selections/Invert  
 Flood fill with Background Pattern  
 Selections/Select All  
 Image/Add Borders/30 pixels/Background Colour  
 Selections/Invert  
 Effects/Plugins/Filters Unlimited 2.0/Toadies/Weaver/Default Settings  
 Effect/Edge Effects/Enhance  
 Selections/Select All  
 Image/Add Borders/6 pixels/White  
 Flood fill with Background Pattern  
 Selection/Invert  
 Layers/New Raster Layer  
 Effects/3D Effects/Cutout  
 Selections/Select None

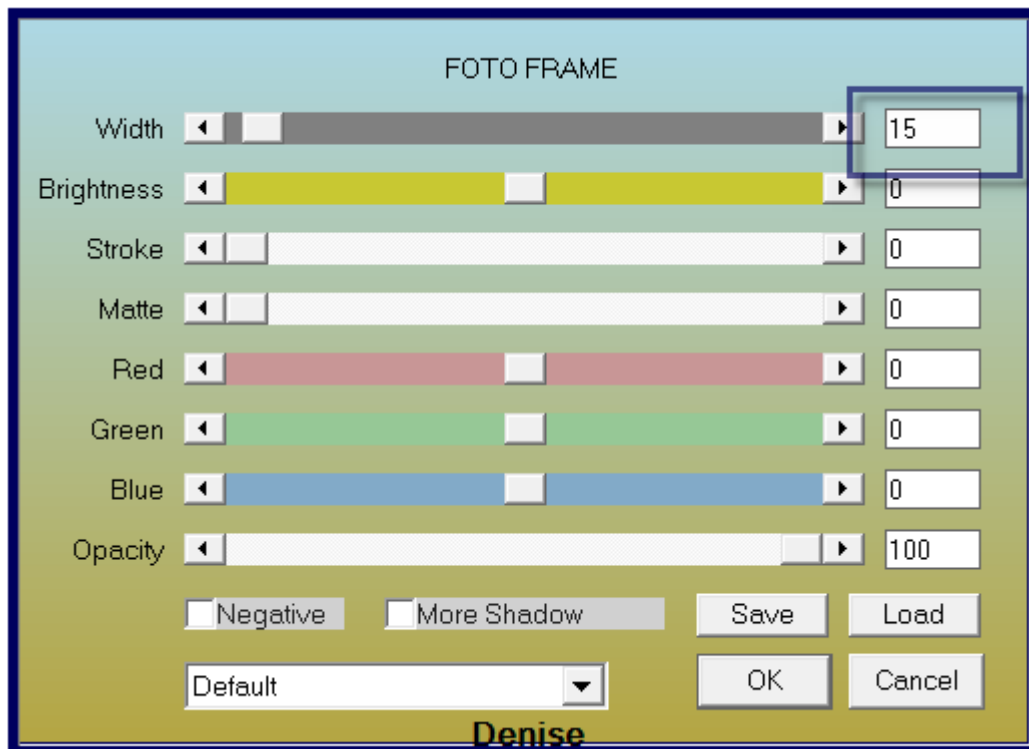
**Step Twelve:**  
 Open Deco.png  
 Edit/Copy Edit/Paste as New Layer  
 Image/Resize/95% as follows:



Adjust/Sharpness/sharpen  
 Leave where it is  
 Effects/Plugins/Eye Candy 4000/Shadowlab

**Step Thirteen:**  
 Maximise D.D.JoyousNoelBorder.png  
 Edit/Copy Edit/Paste as New Layer  
 Leave where it is  
 Selections/Select All  
 Image/Add Borders/50 pixels/White  
 Selections/Invert  
 Maximise the copy made earlier

Edit/Copy Edit/Paste into Selection  
 Effects/Plugins/Filters Unlimited 2.0/Toadies/Weaver  
 Effects/Reflection Effects/Rotating Mirror s  
 Selections/Select None  
 Effects/Plugins/AAA Frames/Foto Frame as follows;



Maximise your Main Tube of children- this should be approximately 600 x 500 pixels

Edit/Copy Edit/Paste as New Layer  
 Place in the bottom right corner of the Layer  
 (see my image for placement)  
 Effects/Plugins/Eye Candy 4000/Shadowlab

#### **Step Fourteen:**

Maximise Signature.png  
 Edit/Copy Edit/Paste as New Layer  
 Place at bottom of Layer  
 Layers/New Raster Layer  
 Add your Watermark  
 Layers/Merge All Flatten  
 Image/Resize/1000 pixels wide - height will adjust itself

#### **OPTIONAL STEP**

Effect/Plugins/AAA Filters/Custom/Landscape

File/Export/JPEG Optimiser/Compression Value 20

I hope you have enjoyed this tutorial  
A big thank you to the ladies who test my Tutorials

### TESTERS' RESULTS



MARIE



BETTY



SJOERTDJE

For other versions please go to:

<http://escapingtopsp2.altervista.org/ChristmasFunVersions/ChristmasFunVersions.html>



<https://escapingtopsp2.blogspot.com/>