

This tutorial is written by Denise D. on 14th March, 2025
from my own ideas.

Any resemblance to other tutorials is co-incidental and unintentional.
If you wish to share my Tutorials, you **MUST** obtain my permission first.
All I ask is that you advise me and credit for the tutorial is given to me and
linked to

<http://escapingtopsp2.altervista.org/Home/homeb.html>

If you wish to join my mailing list please go to:

<https://groups.google.com/g/escaping-to-psp3>

Please do not upload any of my completed Tutorial images onto sites
such as Fotki, Pinterest, Photobucket or similar

THINKING OF YOU



Thank you Inge-Lore, MicheleB, Sylviane and Vera Mendes for these Translations



Click on the Box to download Supplies

Supplies

Images:

12930422603_divers_nikita.png

You can join this Group at:

<http://www.reveries.fr/>

LD-beauty-roses.png

You can join this Group at:

<https://groups.yahoo.com/neo/groups/Safe-Haven-Graphics/info>

Flower Trail.png

Deco.png

Signature.png

Some of these image were obtained from the Internet
If you are the owner of this image, please contact me
so that credit can be given to you

Textures:

Velour

Mask:

1250181536_nikita_masques.jpg

You can join this Group at:

<http://www.reveries.fr/accueil.php>

Plugins:

MuRa's Meister

Eye Candy 4000

LOtis Filters

Graphics Plus

MuRa's Seamless

Found here:



AND

Notes:

This Tutorial was created in Corel 2020.... **other versions may need adjustment**

Some of the graphics may be from Free to Use sites or Share Groups.

If you are the creator of one of these please let me know so that appropriate credit can be given.

No infringement of copyright is intended or intentional.

Before opening PSP, download plugins and install

**Please Note: Offset settings provided in this tutorial may vary according to size of your image.
Please adjust to suit.**

The settings remain the same throughout this Tutorial unless otherwise stated.

Set your Foreground colour to #c1e6c0

Set your Background colour to #6c9abe

Step One:

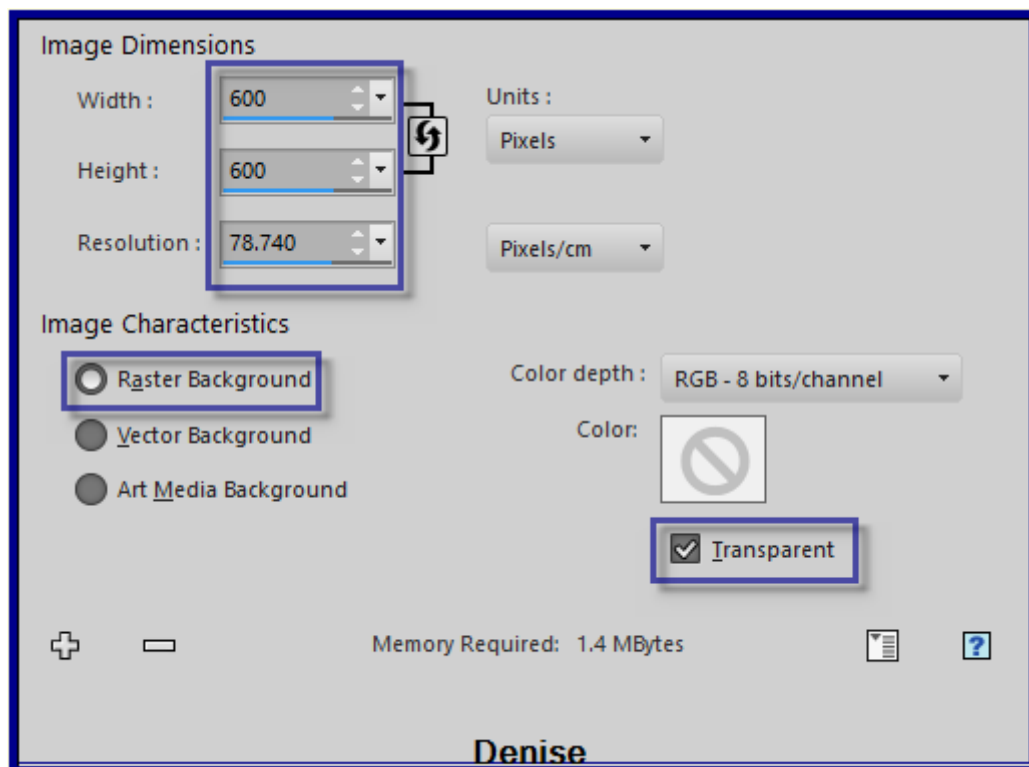
Place Pattern in PSP Pattern Folder

Place Mask in PSP Mask Folder

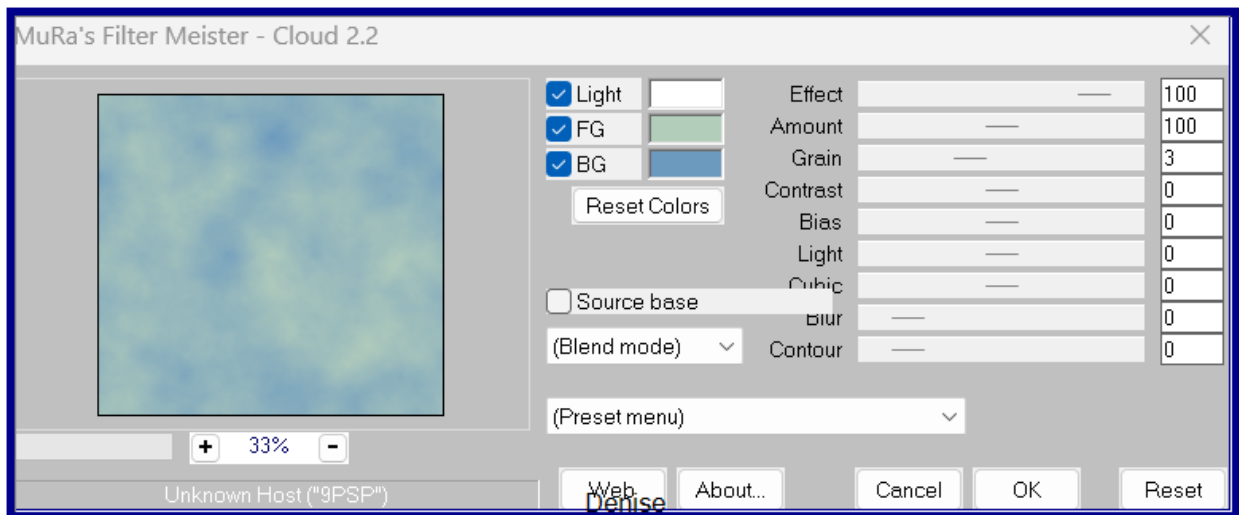
Place Texture in PSP Texture Folder

Open graphics in PSP, duplicate (Shift D) and close the original.

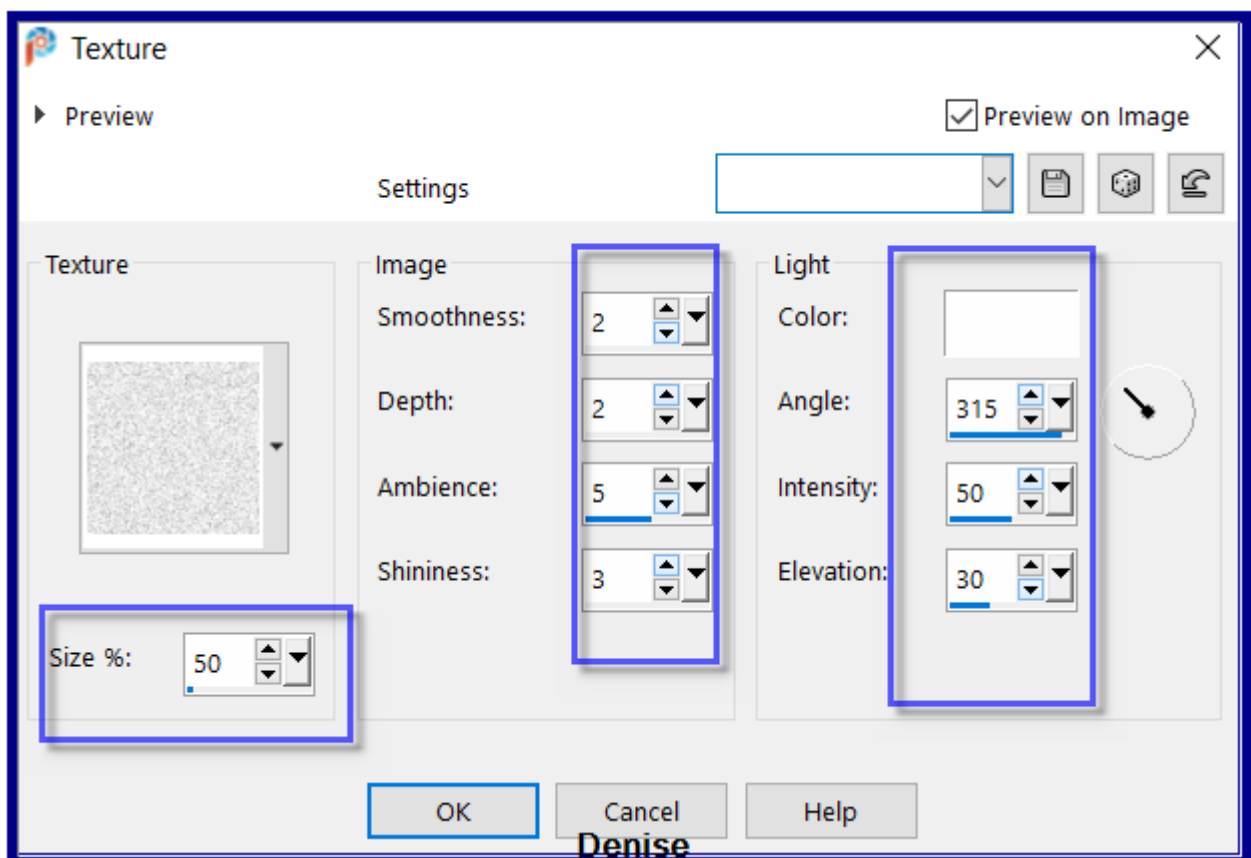
File/New/New Image 600 pixels x 600 pixels as follows:



Effects/Plugins/MuRa's Meister/Cloud as follows:



Effects/Texture Effects/Texture/Velour as follows:

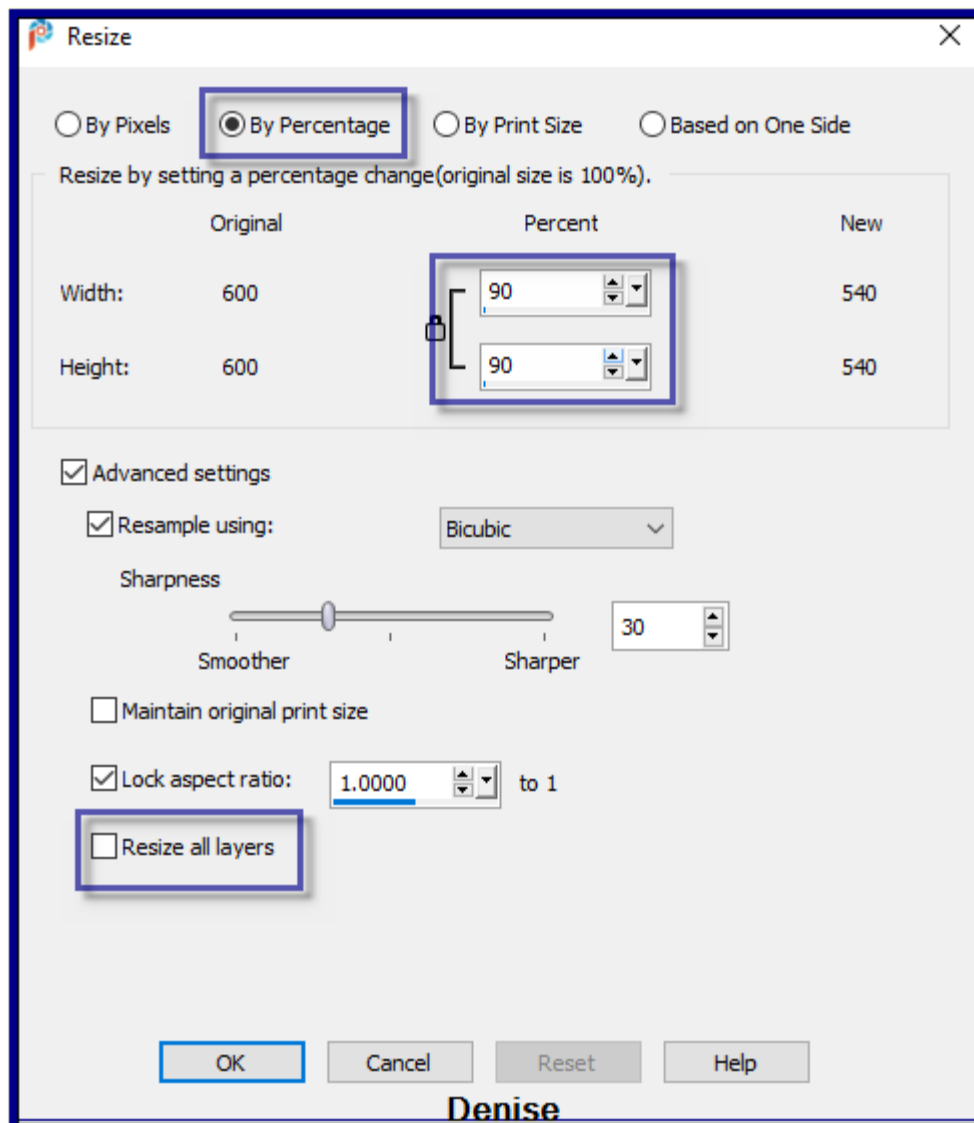


Step Two:

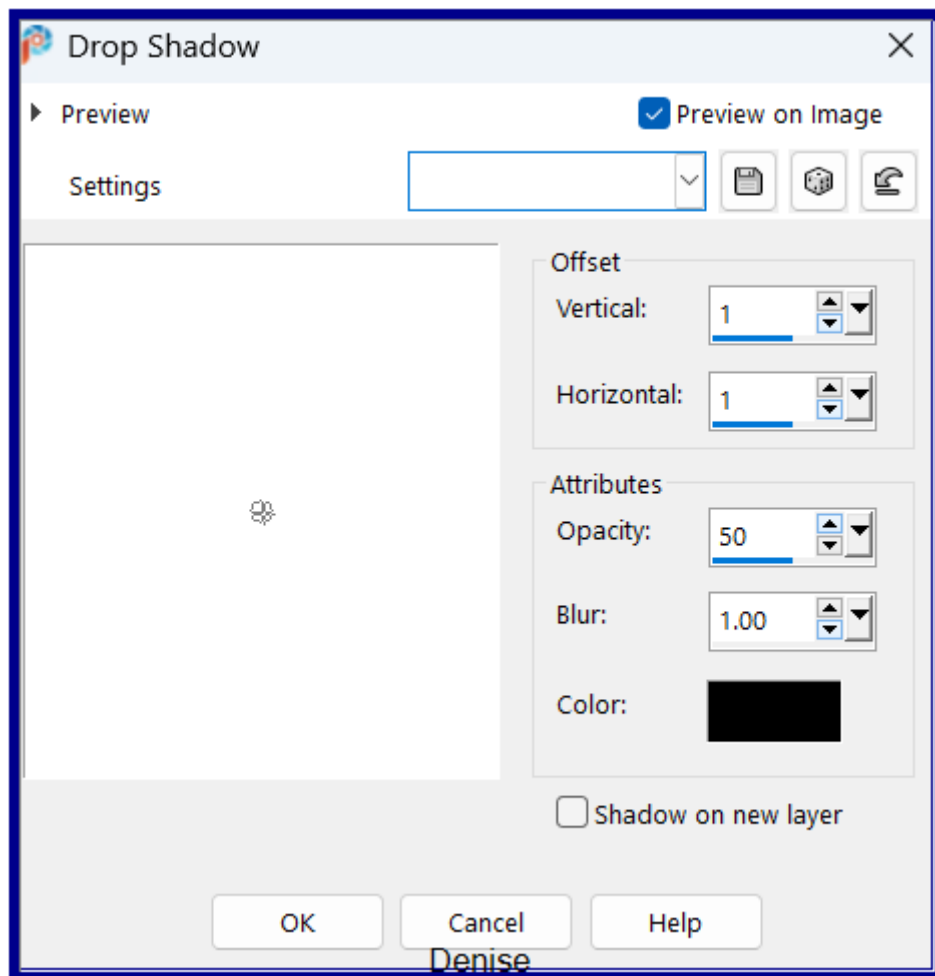
Maximise 12930422603_divers_nikita.png

Edit/Copy Edit/Paste as New Layer

Image/Resize/90% as follows:

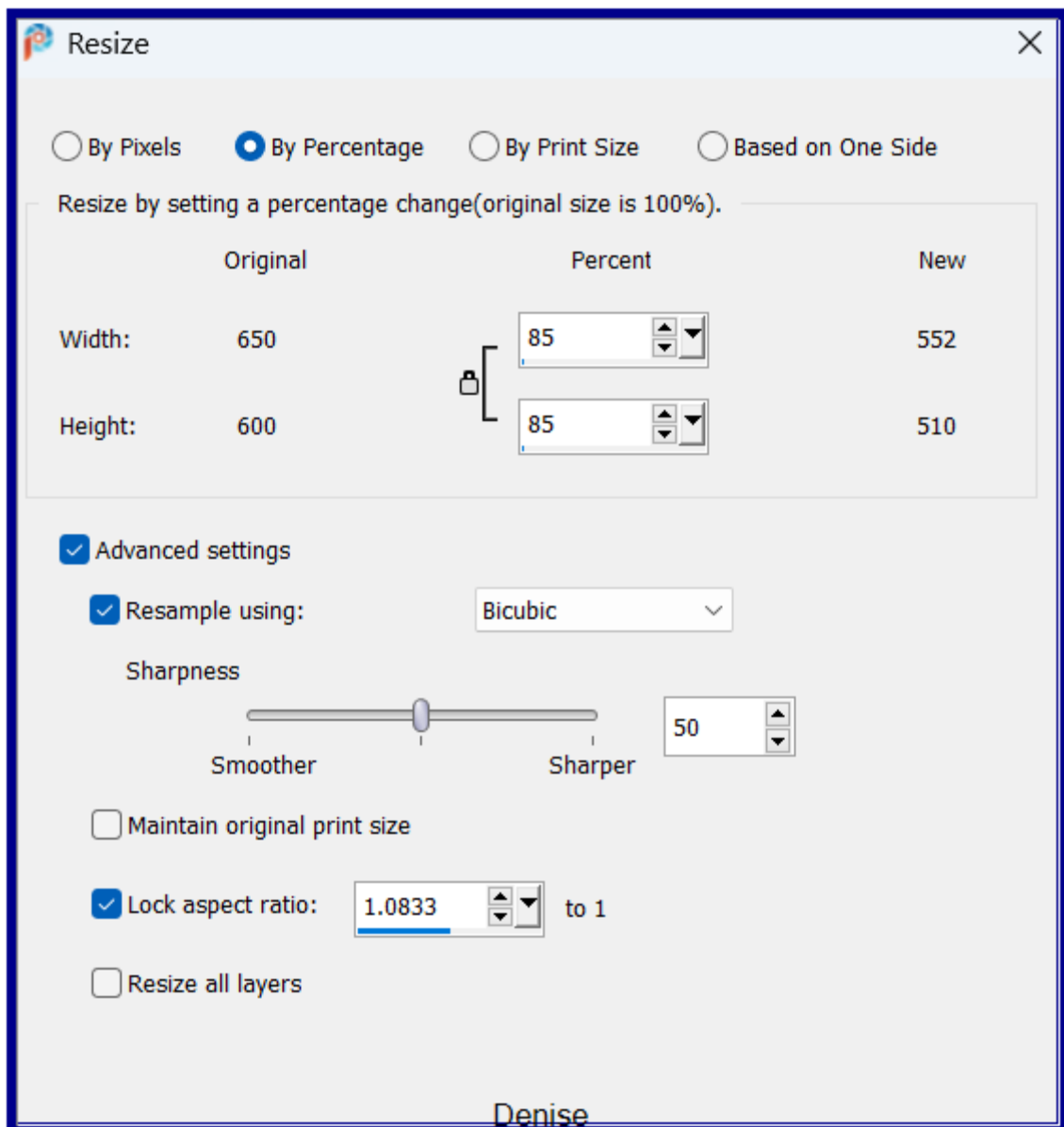


Carefully remove the tuber's watermark with Eraser Tool
Effects/Edge Effects/Enhance
Using the Move Tool, move the lace into the top left hand corner.
Effects/3D Effects/Drop Shadow as follows:

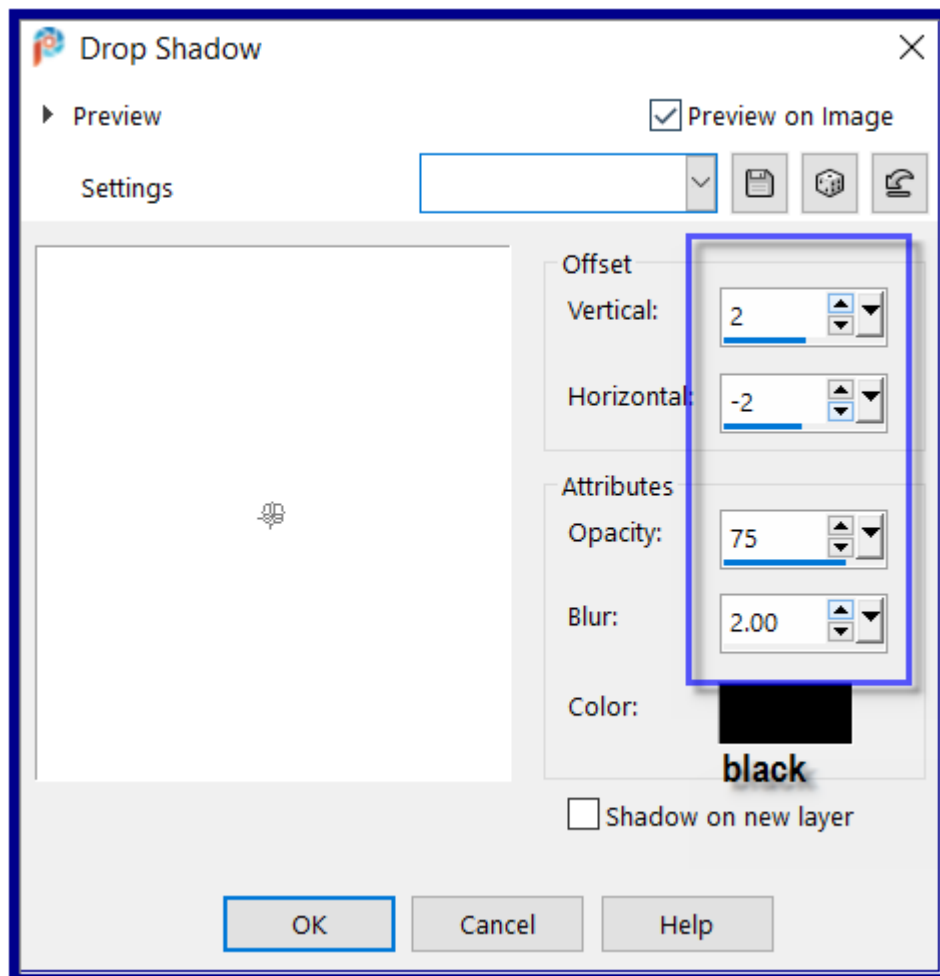


Step Three:

Maximise LD-beauty-roses.png
Edit/Copy Edit/Paste as New Layer
Image/Resize/85% as follows:



Adjust/Sharpness/Sharpen
Carefully remove the tuber's watermark with Eraser Tool
Effects/3D Effects/Drop Shadow as follows:



Objects/Align/Bottom

Step Four:

Selections/Select All

Image/Add Borders/10 pixels/Foreground Colour

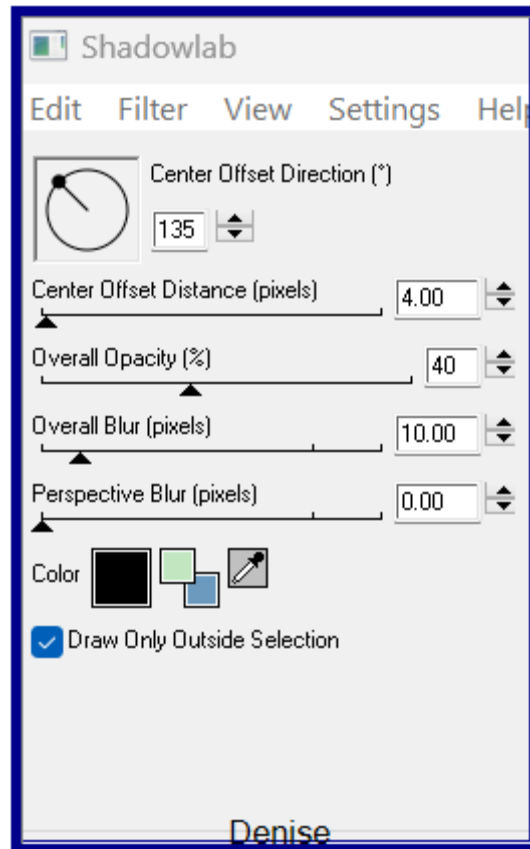
Selections/Invert

Effects/Texture Effects/Texture

Adjust/Sharpness/Sharpen More

Selections/Invert

Effects/Plugins/Eye Candy 4000/Shadowlab as follows:



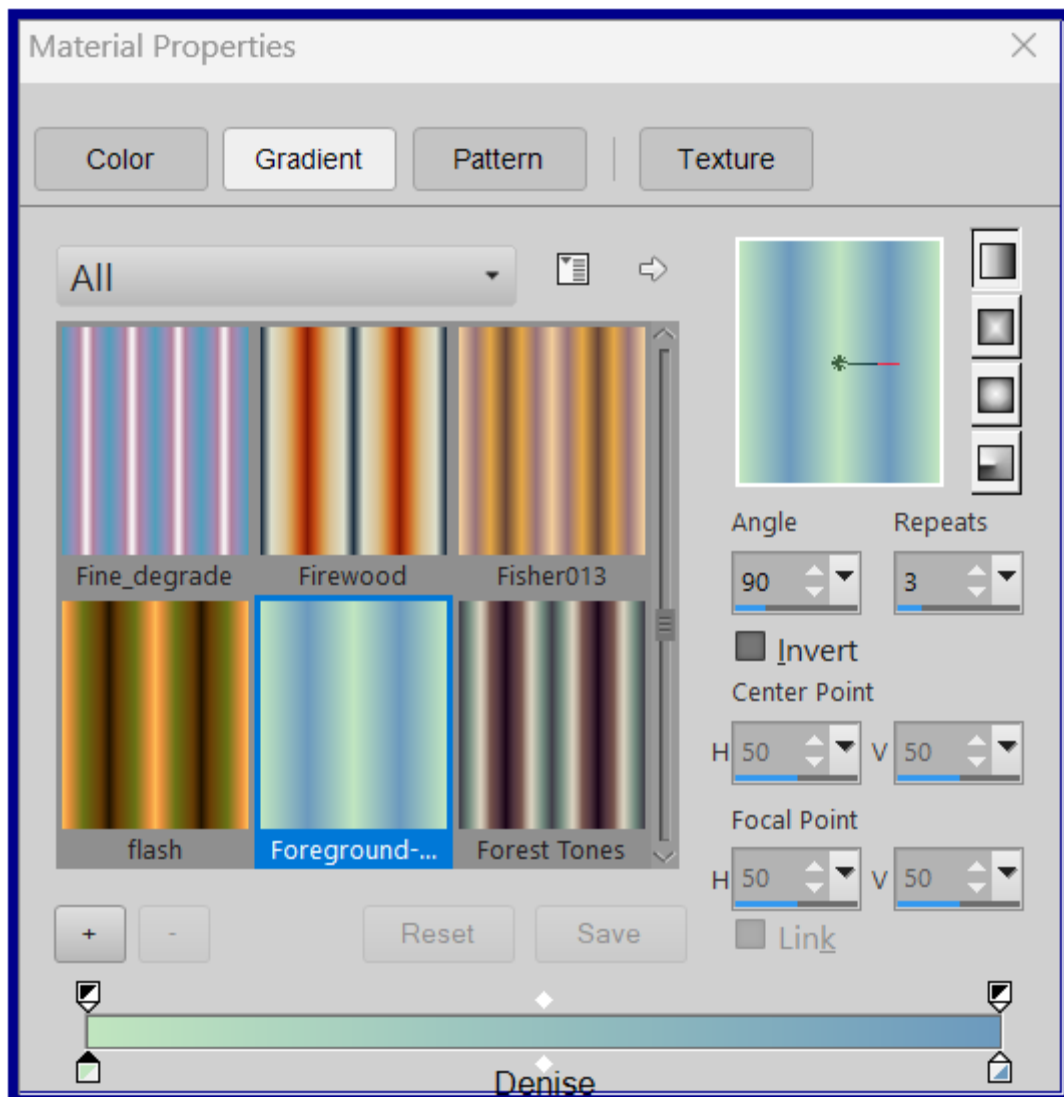
Repeat Shadowlab/Direction 135
Selections/Select All

Step Five:

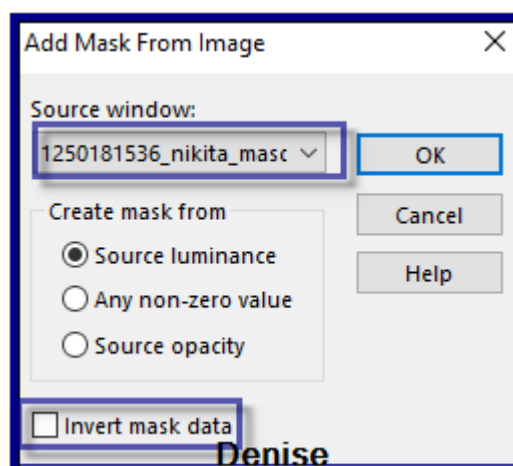
Image/Add Borders/30 pixels/Background Colour
Selections/Invert

Layers/New Raster Layer

Change Foreground colour to Foreground/Background/Linear Gradient as follows:

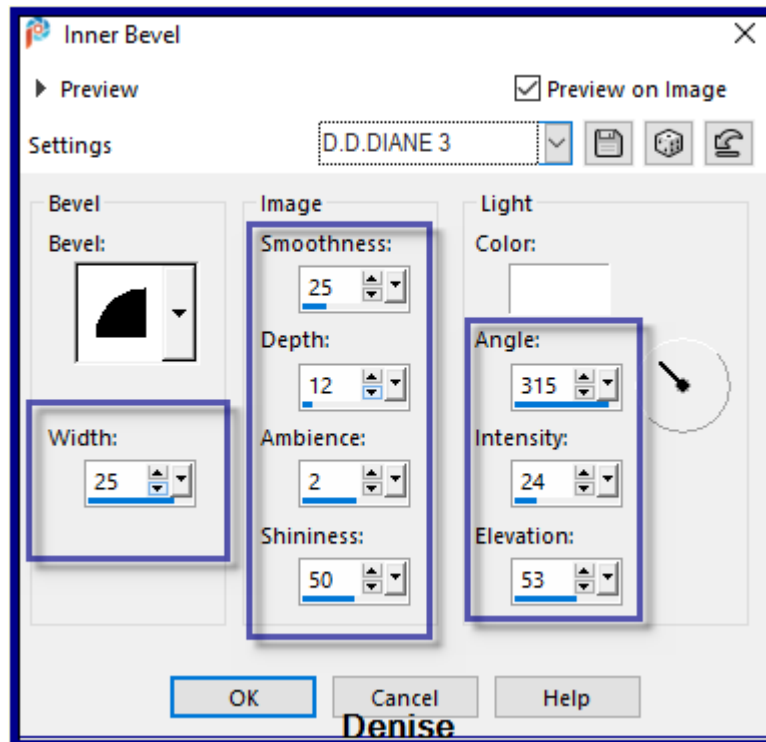


Flood fill with Foreground Gradient
Layers/New Mask Layer/From Image (find
1250181536_nikita_masques.jpg) as follows:



Effects/Edge Effects/Enhance More

Layers/Merge/Merge Group
Effects/3D Effects/Inner Bevel as follows:



Selections/Select All

Step Six:

Image/Add Borders/10 pixels/Foreground Colour

Selections/Invert

Effects/Texture Effects/Texture

Effects/Plugins/Eye Candy 4000/Shadowlab

Repeat Shadowlab/Direction 315

Selections/Select All

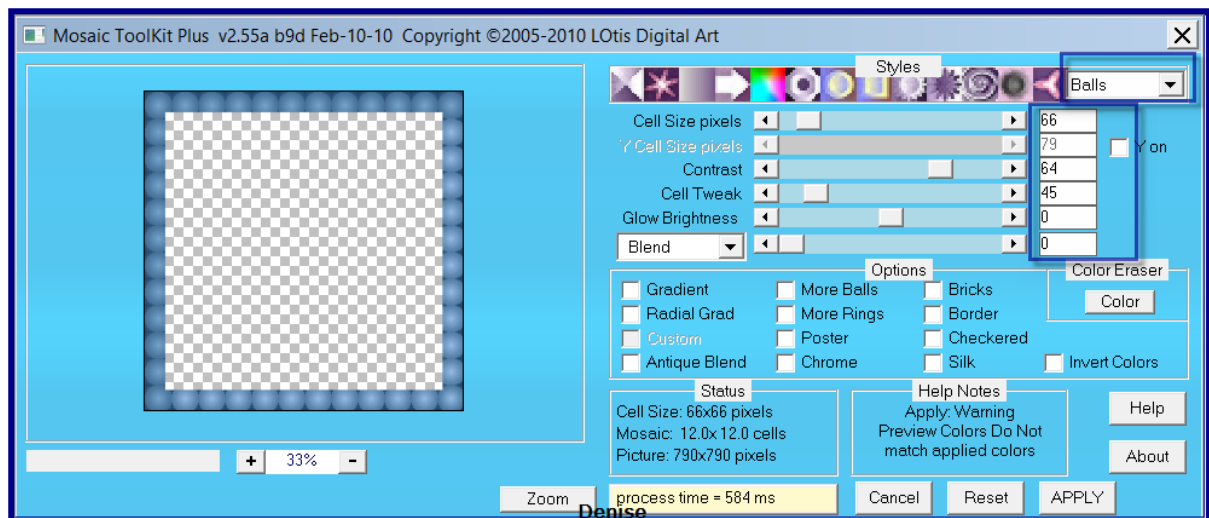
Image/Add Borders 50 pixels/Background Colour

Selections/Invert

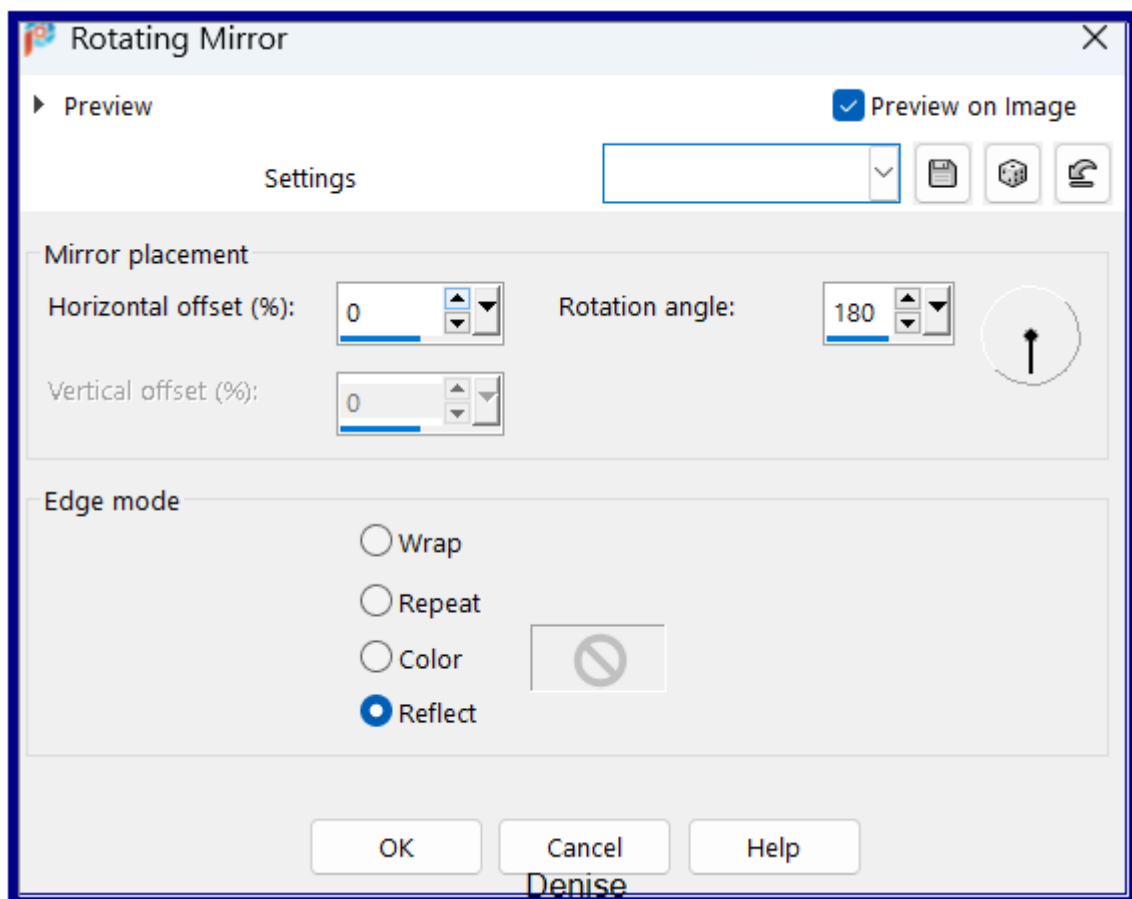
Layers/New Raster Layer

Flood fill with Foreground Gradient

Effects/Plugins/LOtis Filters/Mosaic ToolKit Plus v2.55ab9d as follows:



Effects/Reflection Effects/Rotating Mirror as follows:



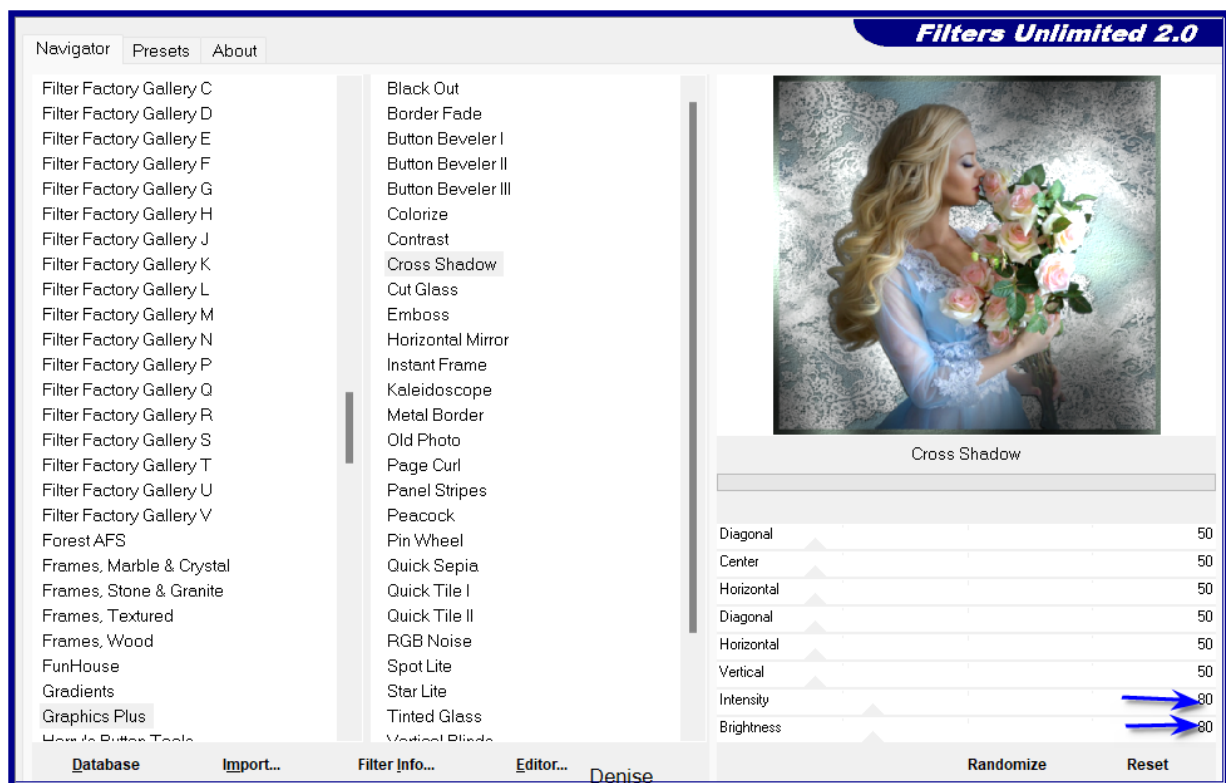
Step Seven:

Effects/Plugins/Eye Candy 4000 Shadowlab
 Repeat Shadowlab/Direction 135
 Selections/Select All
 Image/Add Borders/10 pixels/Foreground Colour

Selections/Invert
Effects/Texture Effects/Texture
Effects/Plugins/Eye Candy 4000 Shadowlab
Repeat Shadowlab/Direction 315
Selections/Select All

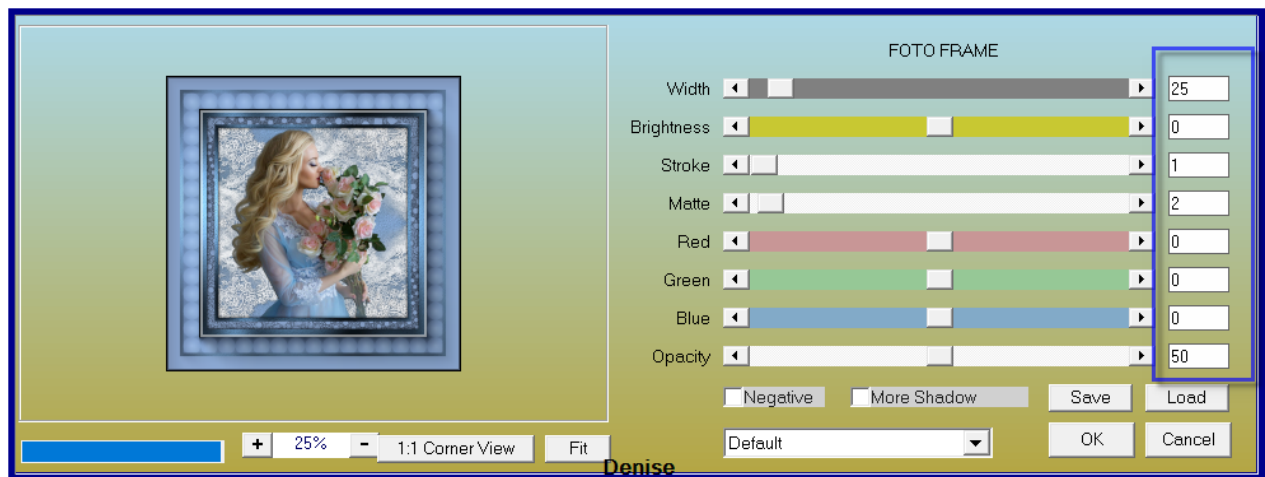
Step Eight:

Image/Add Borders/40 pixels/Background Colour
Selections/Invert
Effects/Plugins/Filters Unlimited 2.0/Graphics Plus/Cross Shadow as follows:



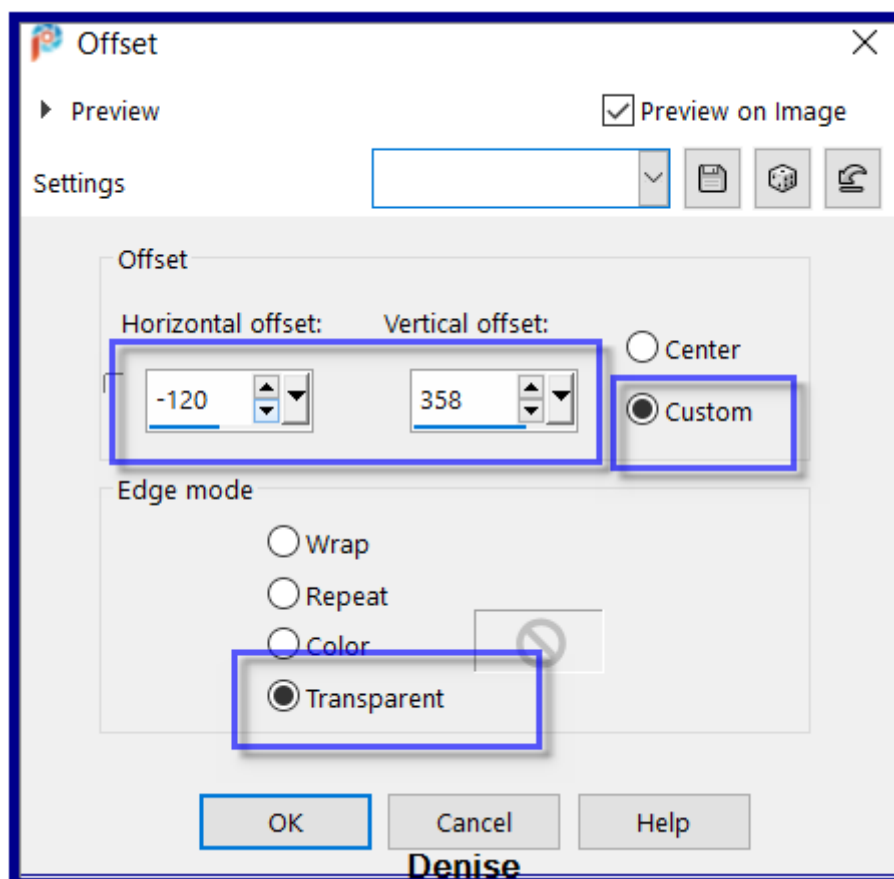
Step Nine:

Effects/Plugins/AAA Frames/Foto Frame as follows:



Selections/Select None
 Maximise Deco.png
 Edit/Copy Edit/Paste as New Layer
 Effects/Plugins/Eye Candy 4000/Shadowlab

Step Ten:
 Maximise Flower Trail.png
 Edit/Copy Edit/Paste as New Layer
 Effects/Image Effects/Offset as follows:



Effects/Plugins/MuRa's Seamless/Emboss at Alpha/Default Settings
Effects/Plugins/Eye Candy 4000/Shadowlab

Step Eleven:
OPTIONAL STEP:
Effects/Plugins/AAA Filters/Custom/Landscape

Layers/New Raster Layer
Maximise Signature.png
Edit/Copy Edit/Paste as New Layer
Place at bottom of Layer
Add your Watermark
Layers/Merge All Flatten
File/Export/JPEG Optimiser/Compression Value 20

I hope you have enjoyed this tutorial
A big thank you to the ladies who test my Tutorials
TESTERS' RESULTS



<https://escapingtopsp2.blogspot.com/>