

This tutorial is written by Denise D. on 26th March, 2024
from my own ideas.

Any resemblance to other tutorials is co-incidental and unintentional.
If you wish to share my Tutorials, you **MUST** obtain my permission first.
All I ask is that you advise me and credit for the tutorial is given to me and
linked to

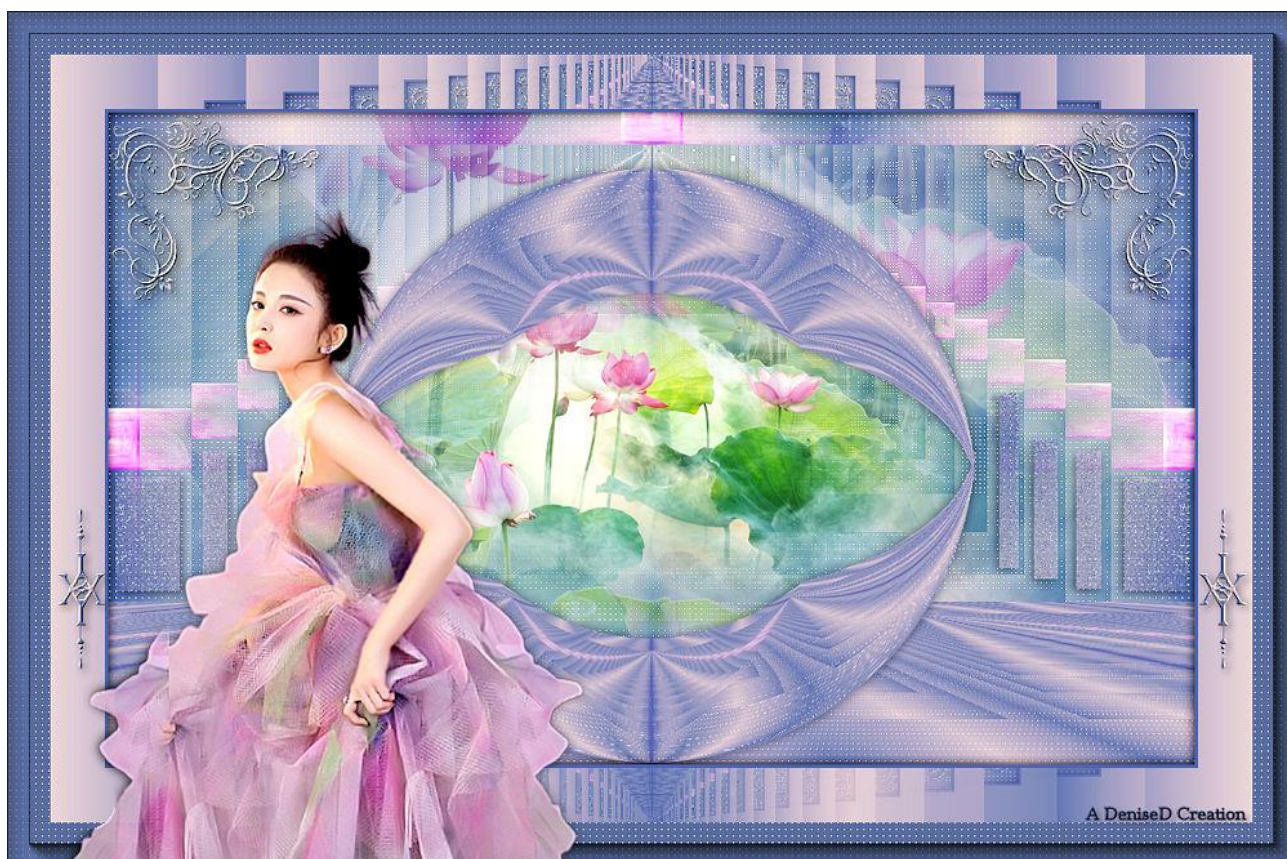
<http://escapingtopsp2.altervista.org/Home/homeb.html>

If you wish to join my mailing list, please go to:

<https://groups.google.com/g/escaping-to-psp3>

Please do not upload any of my completed Tutorial images onto sites
such as Fotki, Pinterest, Photobucket or similar

SEAMLESS



<http://escapingtopsp2.altervista.org/ValentinesDay2024/ValentinesDay2024.html>



Thank you Inge-Lore, Michele B., Sylviane and Vera Mendes for these Translations



Click on the Box to download Supplies

Supplies

You will need to supply:

A misted background image

(I chose a floral image)

Main Image

Deco

Thank you LuzCristina for the use of your tube:

<https://es.groups.yahoo.com/neo/groups/TubesPSP-LuzCristina/info>

Supplies included with the Tutorial

Selections:

D.D.Seamless
D.D.Seamless2
D.D.Seamless3
D.D.Seamless4

Plugins:

Filters Unlimited 2.0/Frames, Marble & Crystal
Filters Unlimited 2.0/<BKg Designer sf101
MuRa's Meister
Eye Candy 4000
Caroline & Sensibility
AAA Frames

Found here:



Double Click on the icon in your supplies folder to install this Preset in your Plugin.

Notes:

This Tutorial was created in PSP2019

.... **other versions may need adjustment**

Some of the graphics may be from Free to Use sites or Share Groups.

If you are the creator of one of these please let me know so that appropriate credit can be given.

No infringement of copyright is intended or intentional.

Before opening PSP, download plugins and install

Some helpful information:

You can change the blend mode, opacity and drop shadow, as well as colourise the materials, according to the tubes/colours you are using.

When applying the Resize with the All Layers option checked, this will be informed in the tutorial, otherwise, apply the resize with this option unchecked.

Remember always to save your work.

Whenever you reduce an image, apply Adjust/Sharpness/Sharpen, to maintain the sharpness of the image.

Some tools or features have other names in earlier versions of the PSP.

<http://escapingtopsp2.altervista.org/Home/homeb.html>

© Vera Mendes	Tools:	Old versions:
	Pick Tool	deformation
	Horizontal Mirror	Mirror
	Vertical Mirror	flip

Please Note: Offset settings provided in this tutorial may vary according to size of your image.
Please adjust to suit.

The settings remain the same throughout this Tutorial unless otherwise stated.

Set your Foreground colour to #d7c3ce

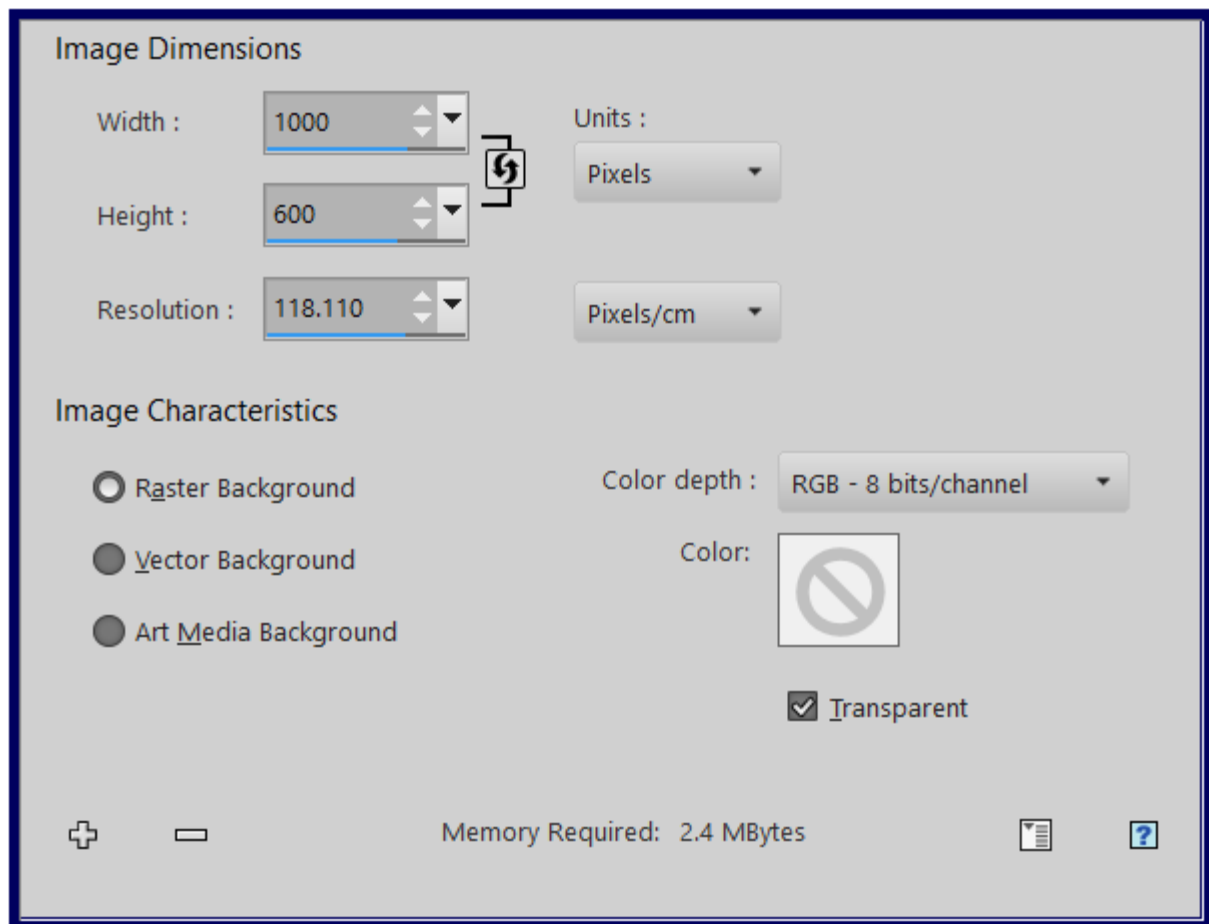
Set your Background colour to #616fa9

Step One:

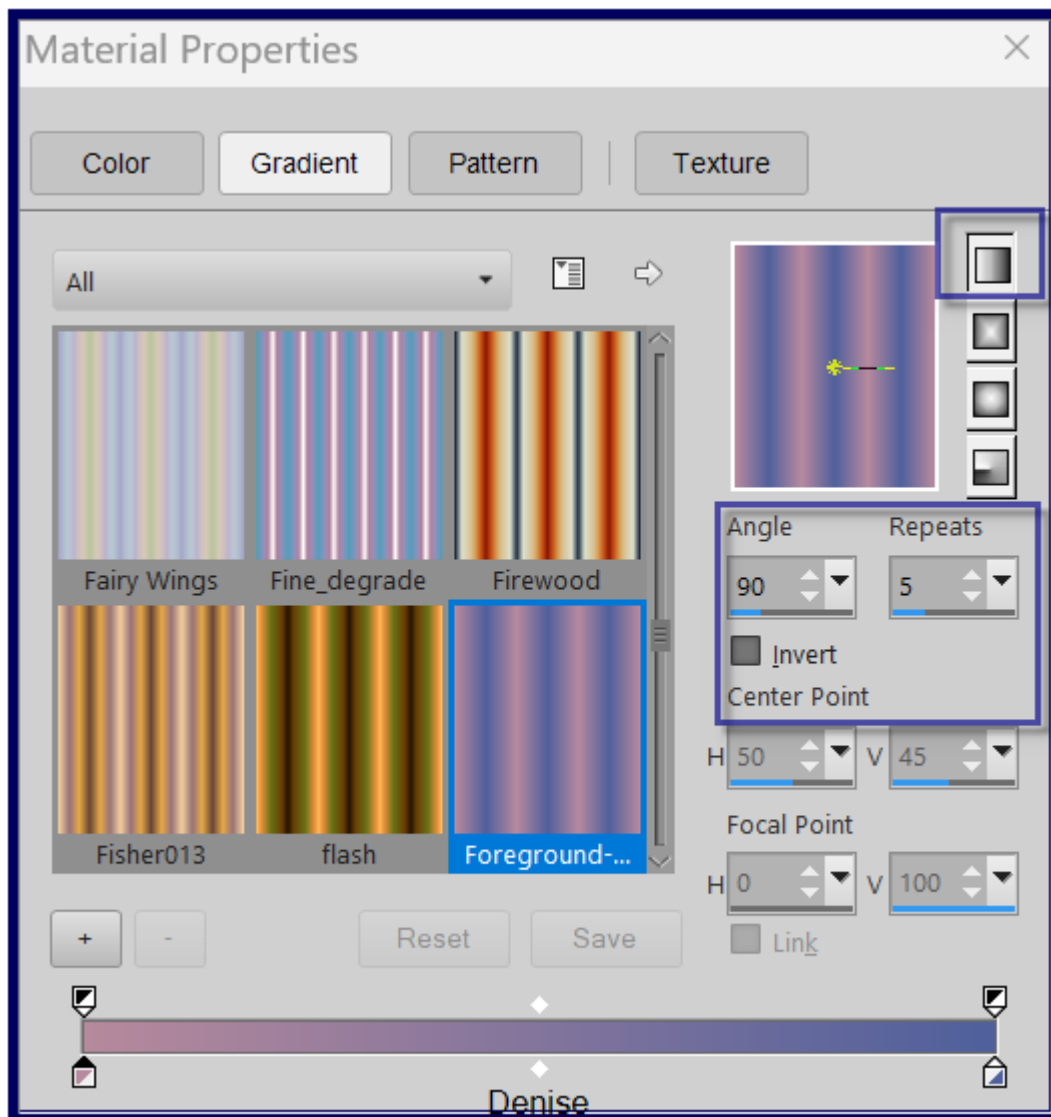
Place Selections in PSP Selection Folder

Open graphics in PSP, duplicate (Shift D) and close the original.

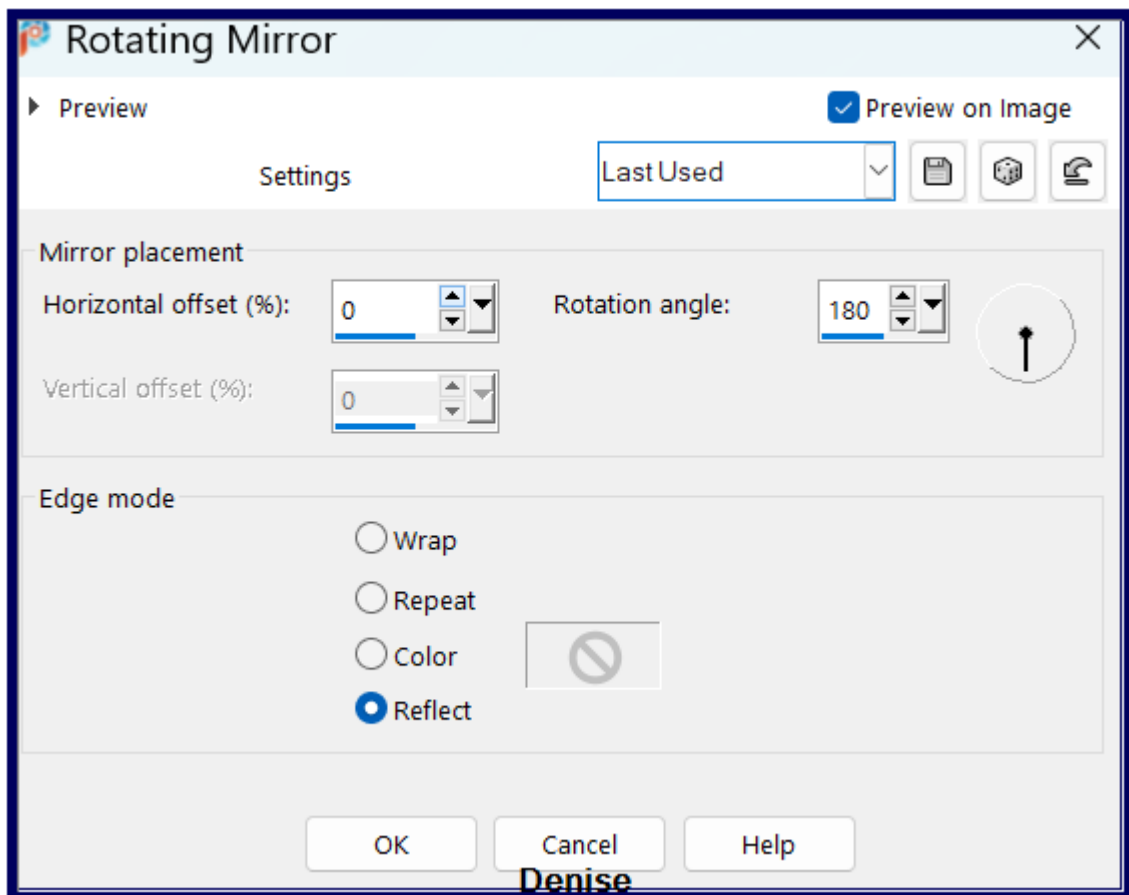
File/New/New Raster Layer 1000 pixels x 600 pixels as follows:



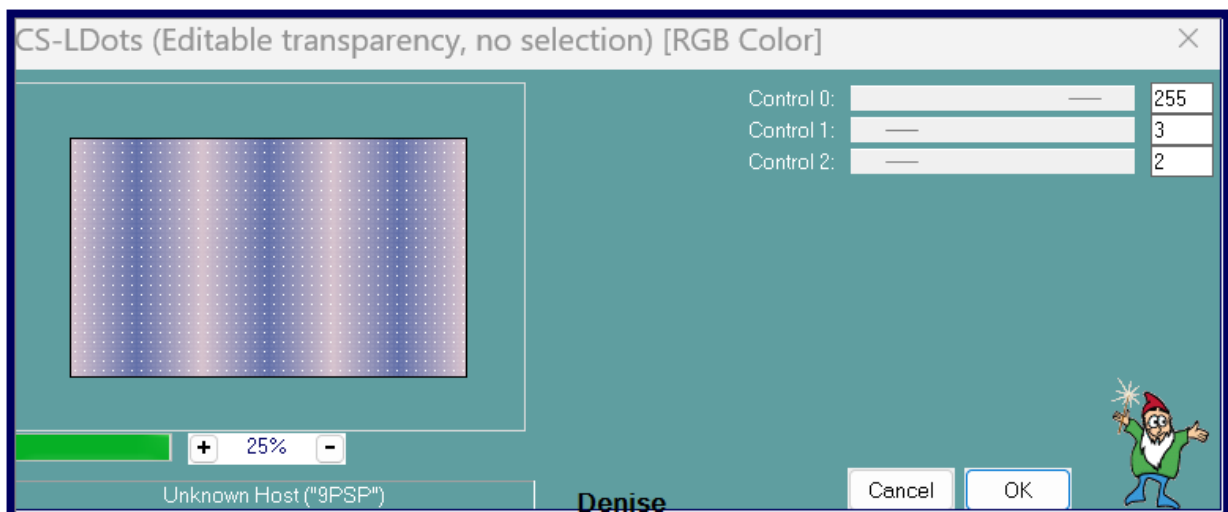
Change Foreground Colour to Foreground/Background/Linear Gradient as follows:



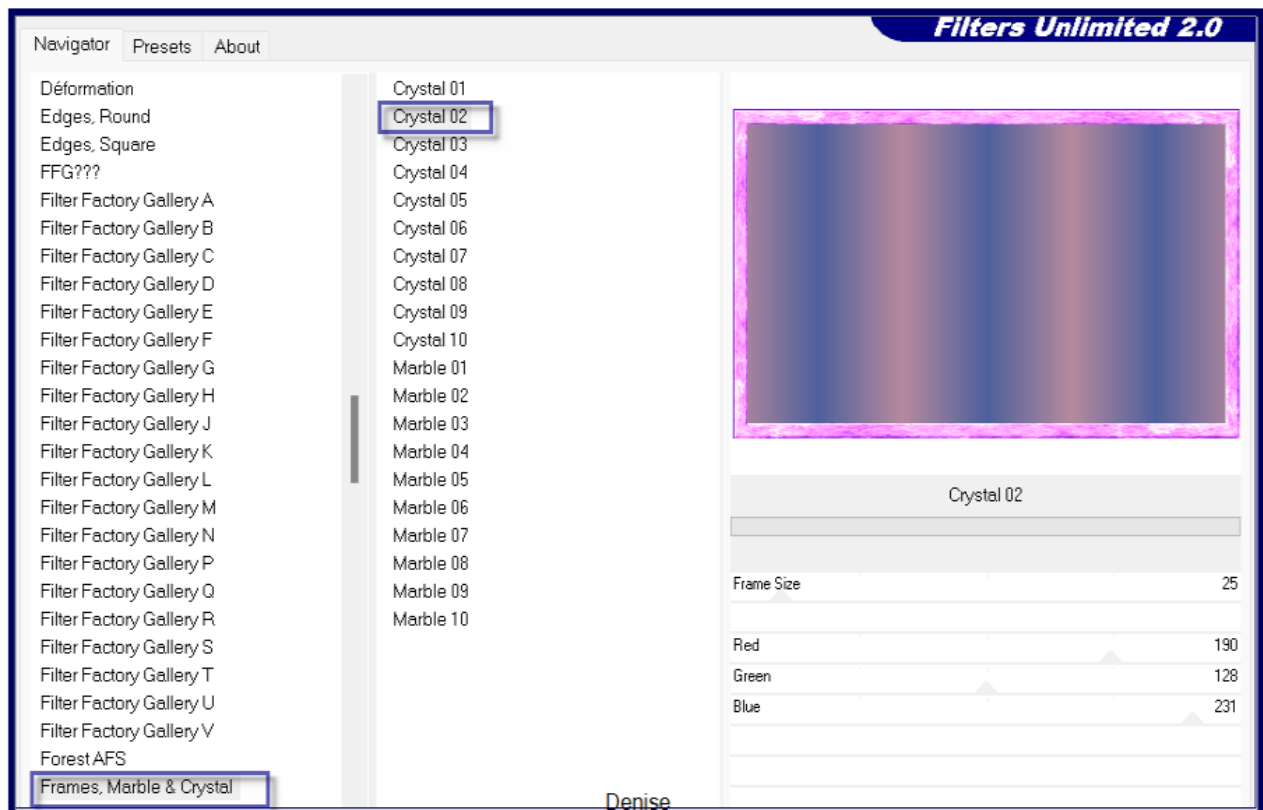
Flood fill with Foreground Gradient
Effects/Reflection Effects/Rotating Mirror as follows:



Step Two:
Effects/Plugins/Caroline & Sensibility/CS-LDots as follows:

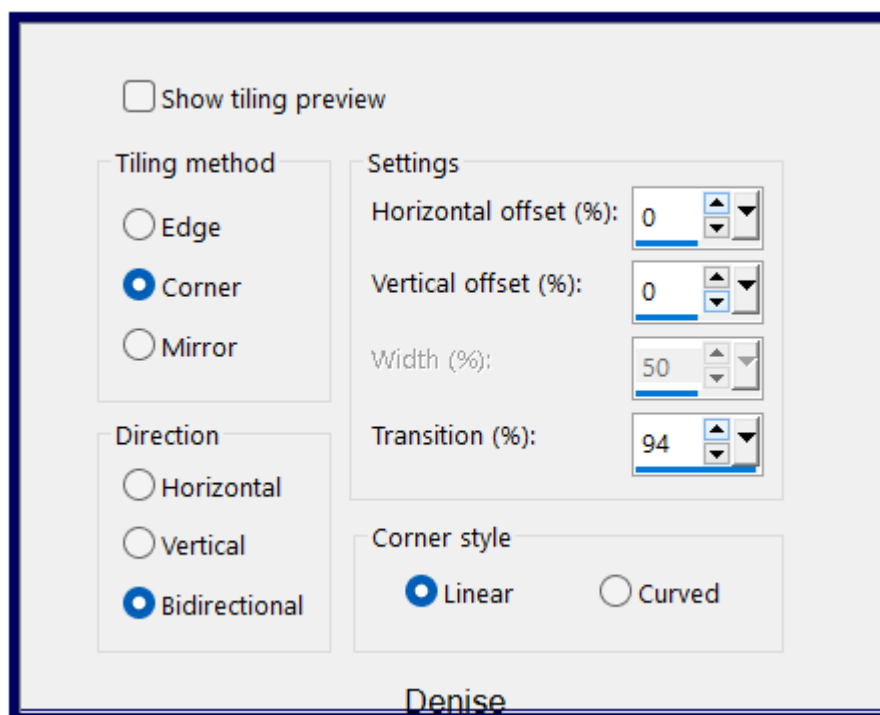


Effects/Plugins/Filters Unlimited 2.0/Frames (Marble & Crystal) Crystal 02
as follows:

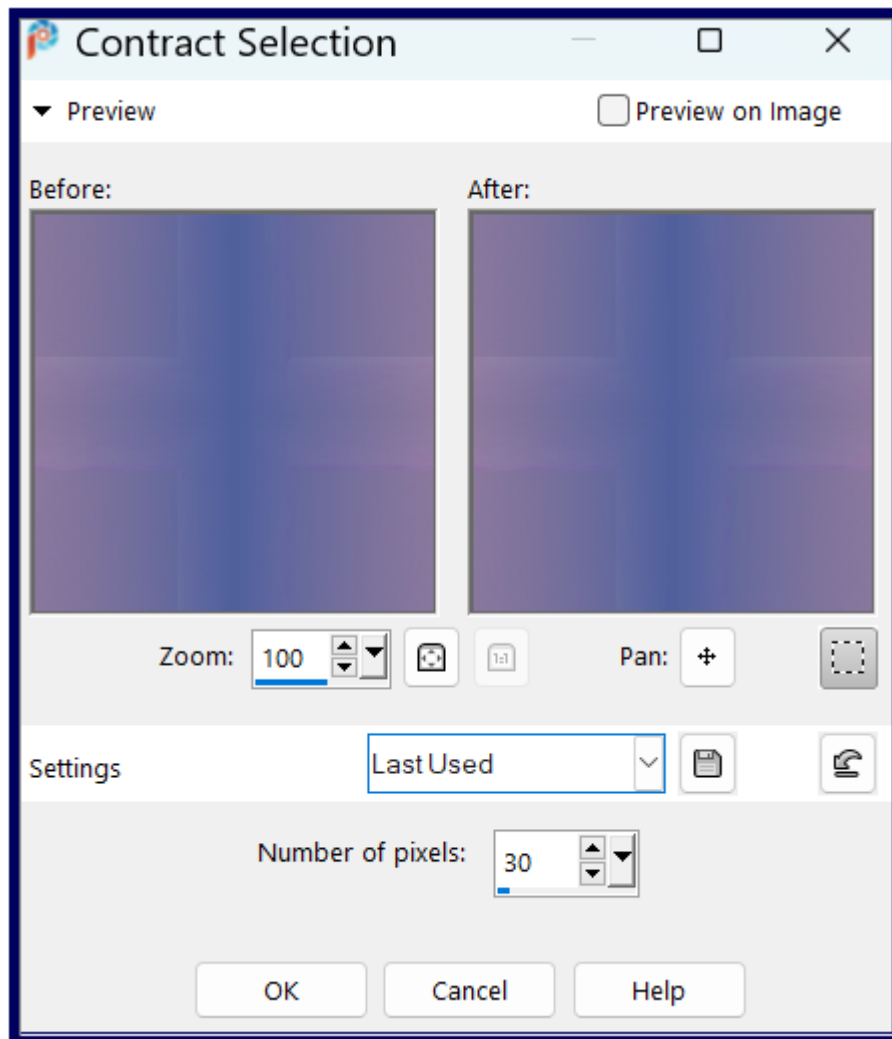


Change the settings here to suit your colours if you used other than mentioned in this tutorial

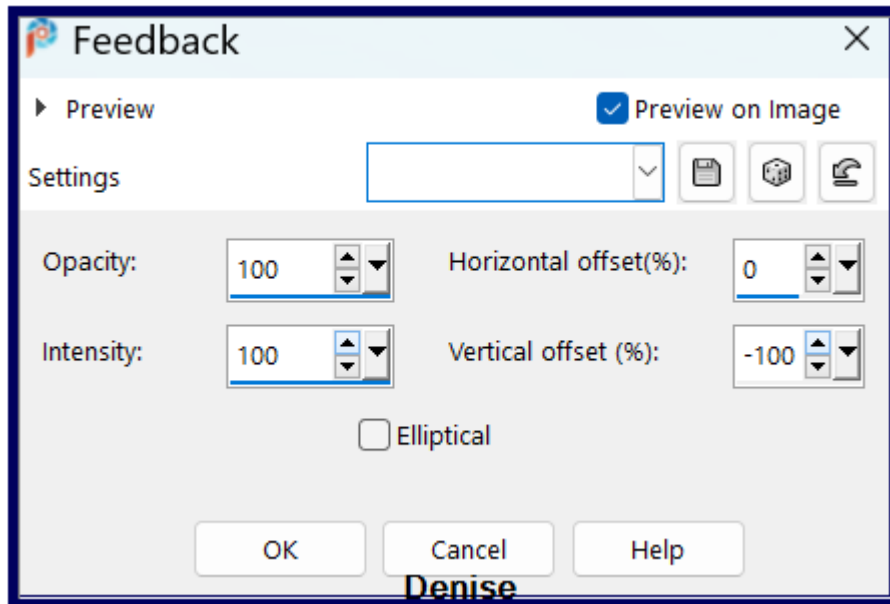
Step Three:
Effects/Image Effects/Seamless Tiling as follows:



Layers/Duplicate
Selections/Select All
Selections/Modify/Contract 30 pixels as follows:



Step Four:
Promote Selection to Layer
Effects/Reflection Effects/Feedback as follows:

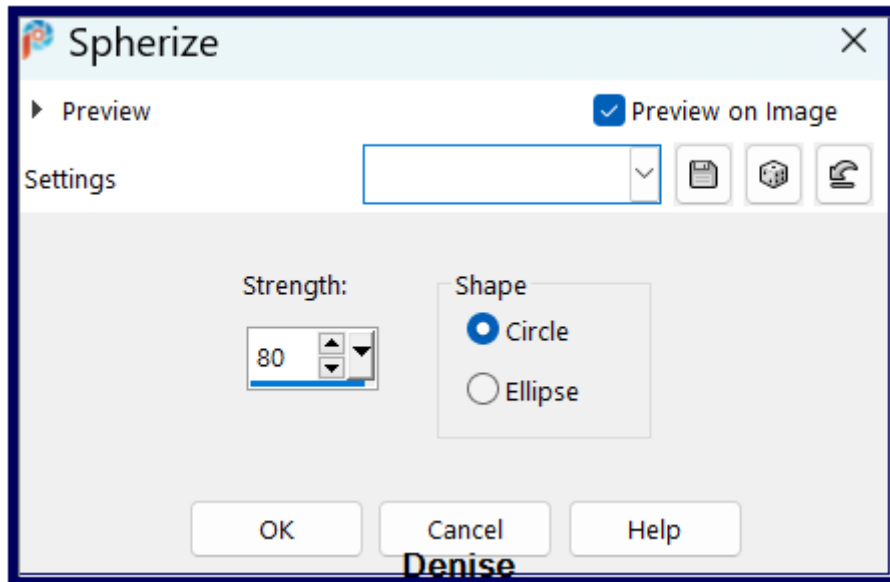


Adjust/Sharpness/Sharpen
 Selections/Select None
 Layers/Duplicate
 Effects/Plugins/MuRa's Meister/Perspective Tiling as follows:



Adjust/Sharpness/Sharpen

Step Five:
 Effects/Geometric Effects/Spherize as follows:



Layers/Duplicate

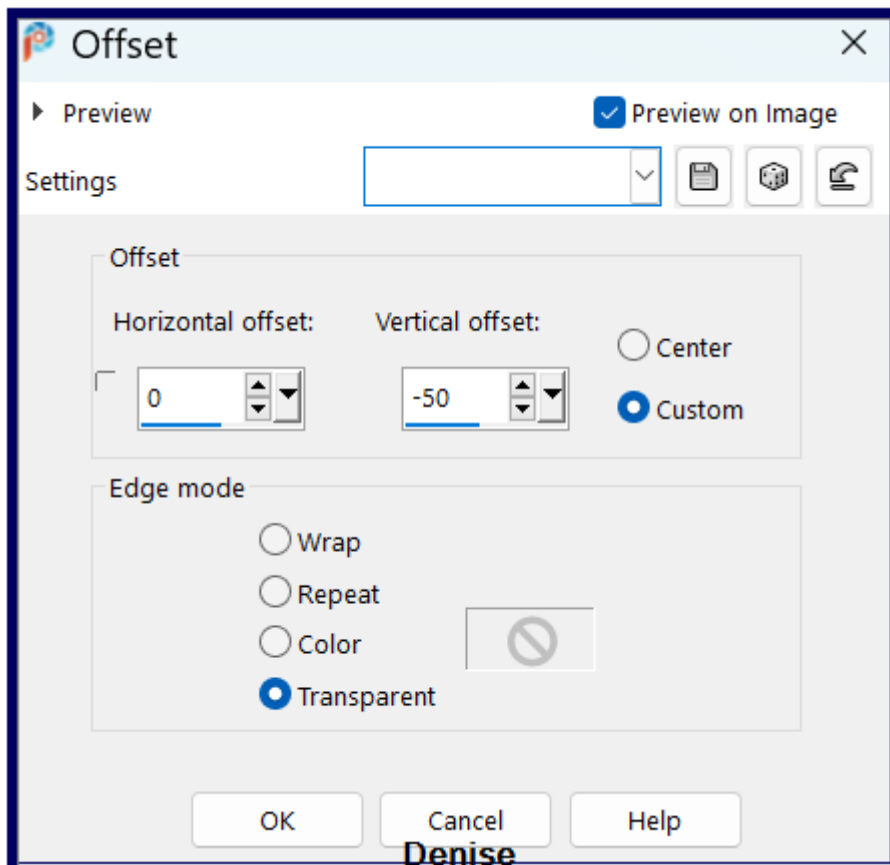
Step Six:

Effects/Geometric/Circle

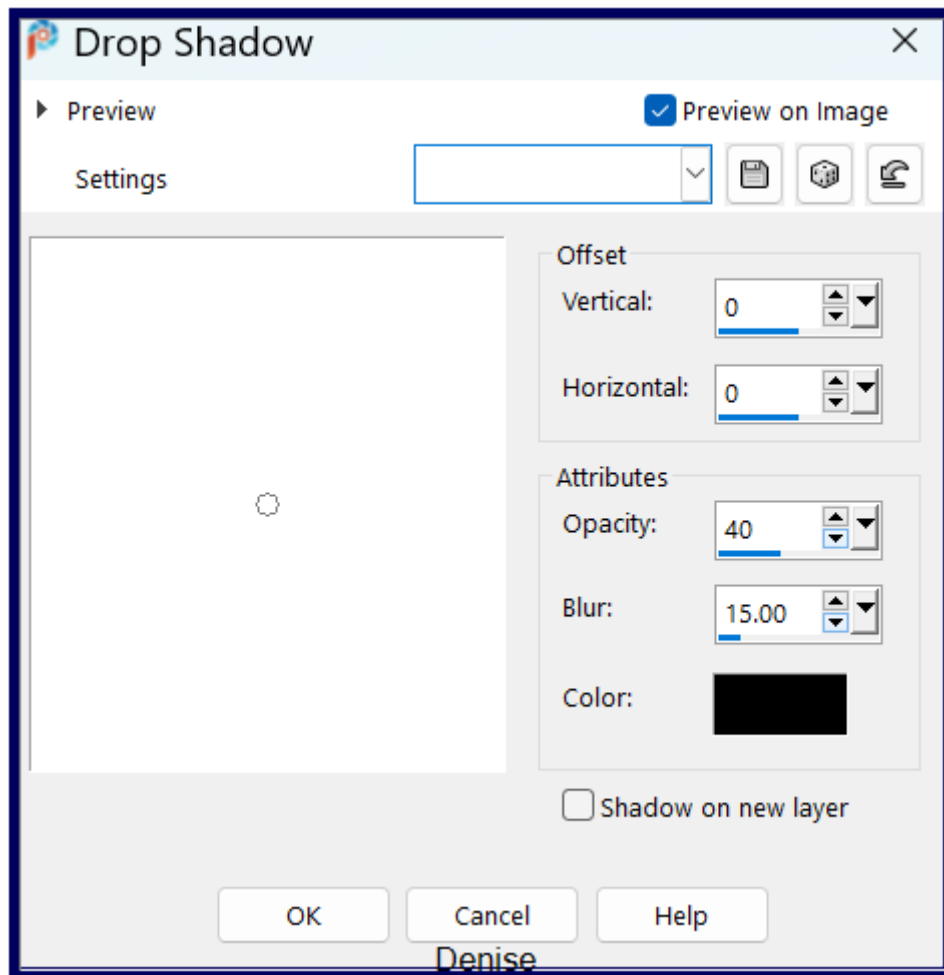
Layers/Duplicate

Image/Mirror/Vertical

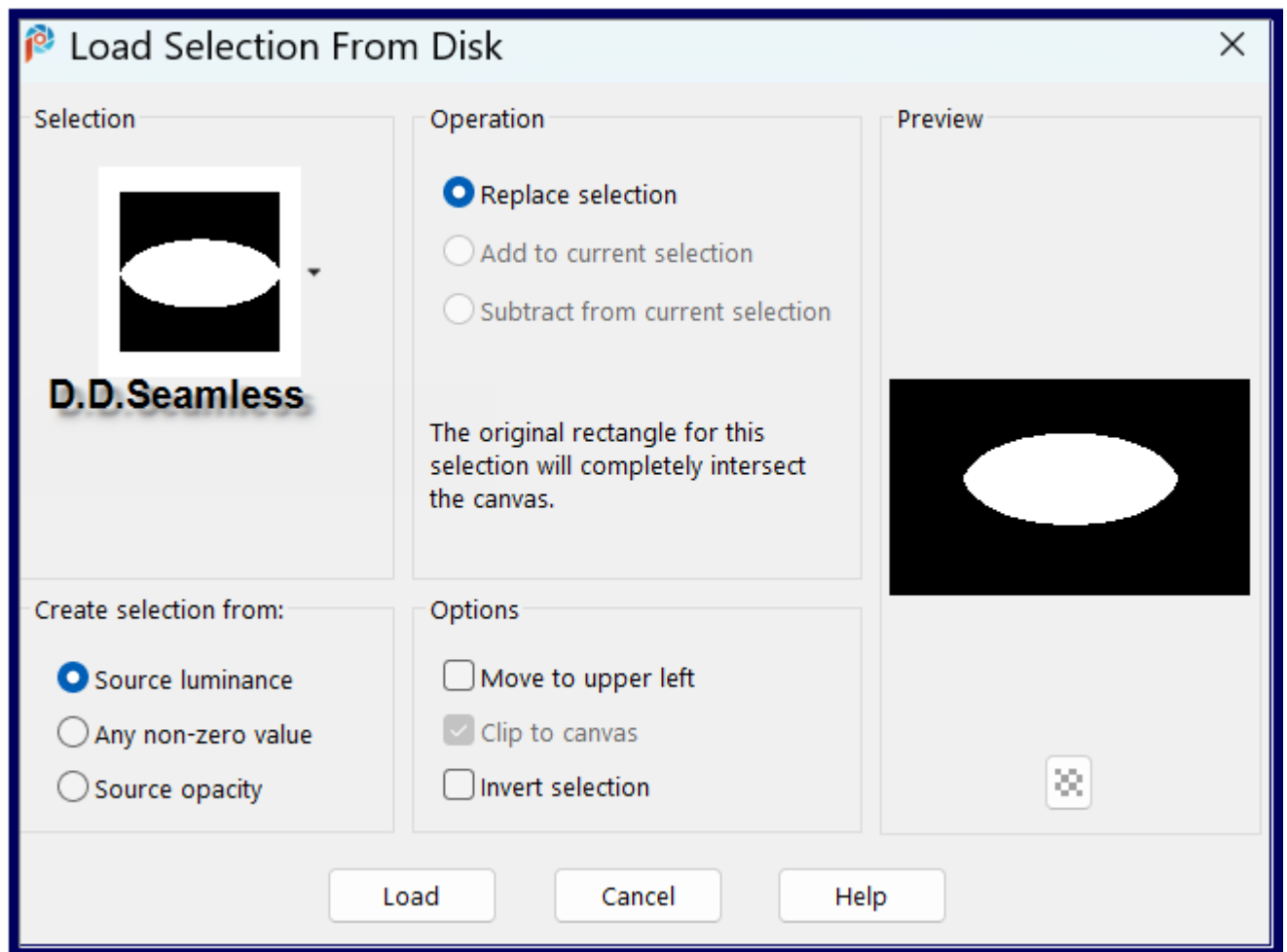
Effects/Image Effects/Offset as follows:



Layers/Merge/Merge Down
Effects/3D Effects/Drop Shadow as follows:



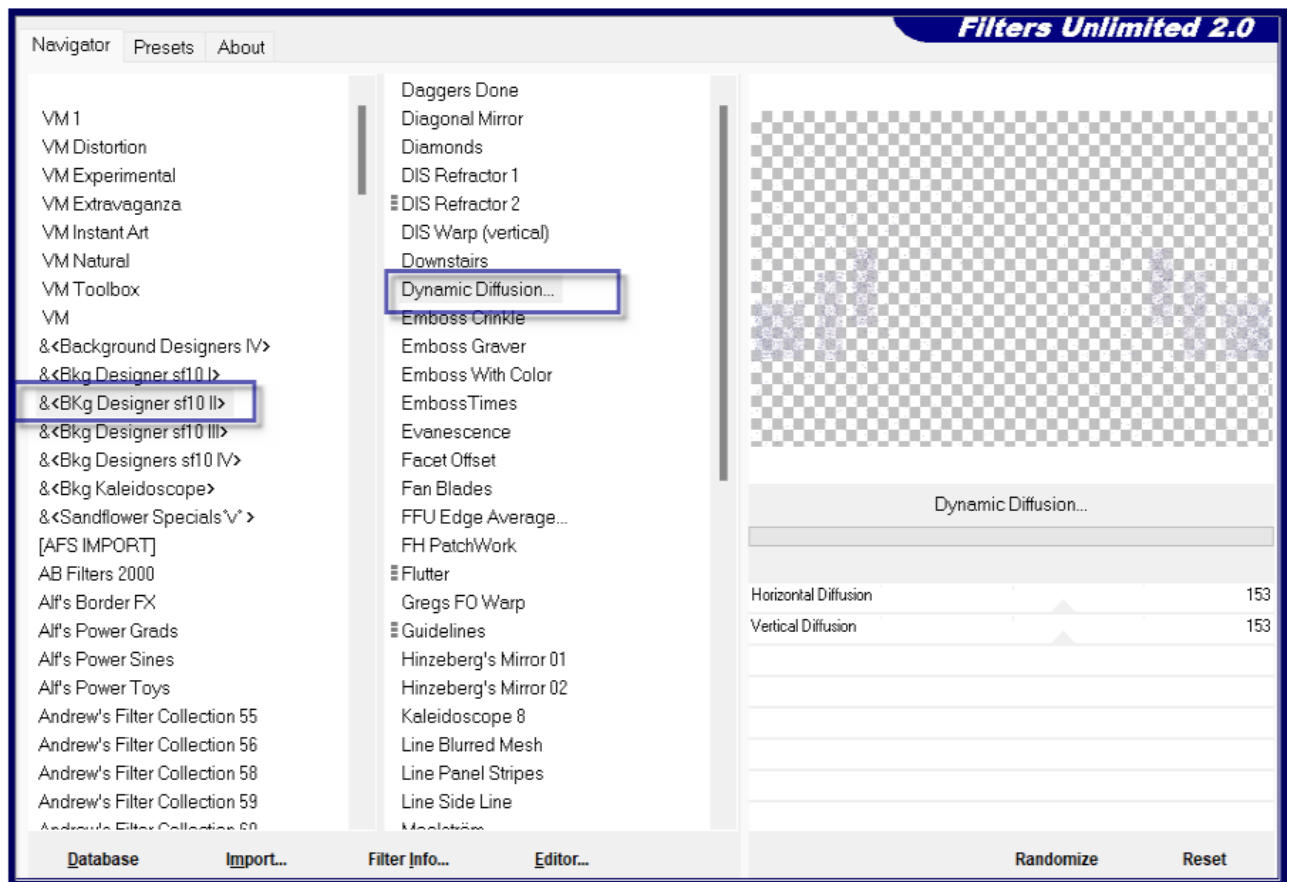
Step Seven:
Layers/New Raster Layer
Layers/Arrange/Move Down
Selections/Load/Save Selection/Load Selection D.D.Seamless from Disk
as follows:



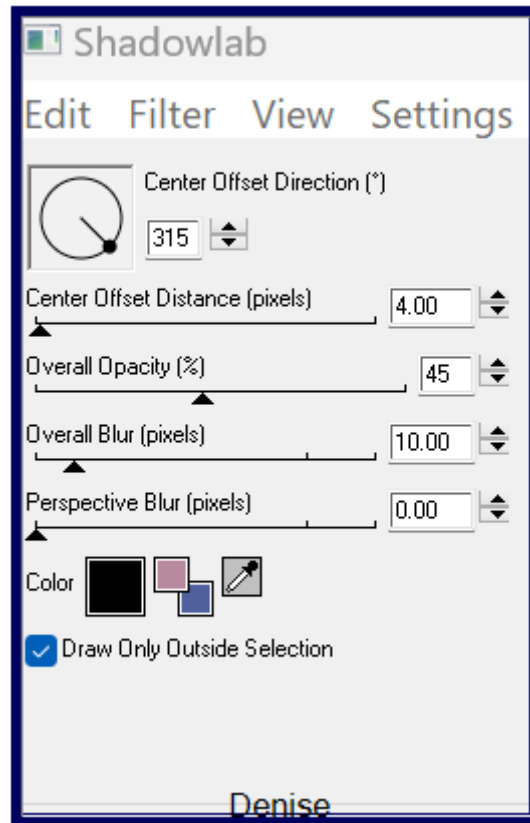
Maximise your misted background image
 Edit/Copy Edit/Paste into Selection
 Adjust/Sharpness/Sharpen
 Selections/Select None

Step Eight:

Select Promoted Selection Layer
 Edit/Paste as New Layer (image will still be saved)
 Change Blend Mode to Overlay and Opacity to 50%
 Select Raster 1 again
 Selections/Load/Save Selection/Load Selection D.D.Seamless2 from Disk
 Promote Selection to Layer
 Layers/Arrange/Bring to Top
 Effects/Plugins/Filters Unlimited 2.0/BK Designer sf1011/Dynamic
 Diffusion as follows:



Step Nine:
 Selections/Select None
 Effects/Reflection Effects/Rotating Mirror
 Effects/Plugins/Eye Candy 4000/Shadowlab as follows:

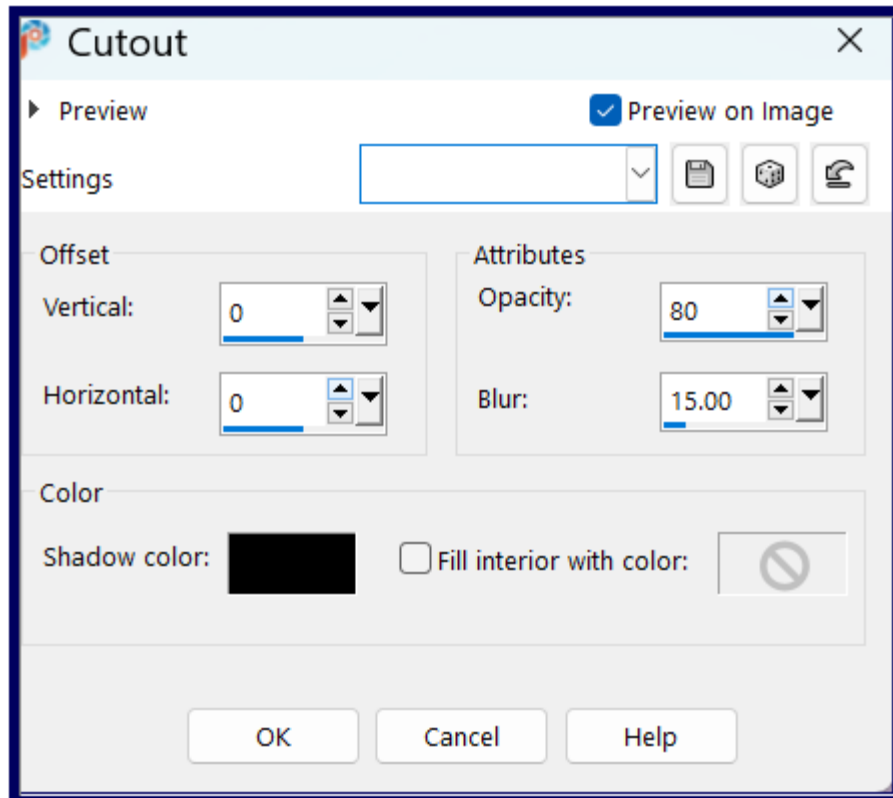


Step Ten:

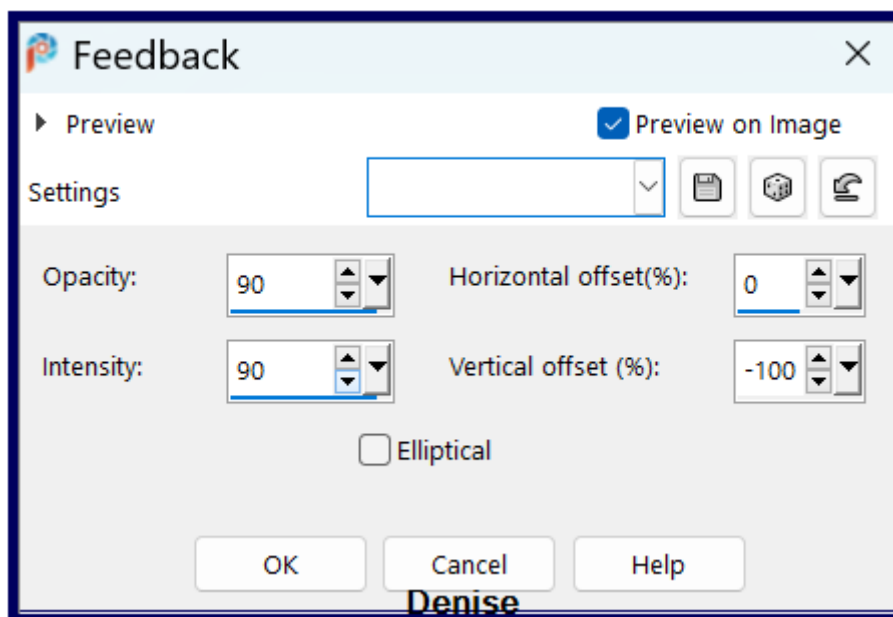
Layers/New Raster Layer
 Selections/Load/Save Selection/Load Selection D.D.Seamless4 from Disk
 Flood fill with Foreground Gradient
 Selections/Select None
 Effects/Plugins/MuRa's Seamless/Emboss at Alpha/Default Settings
 Effects/Plugins/Eye Candy 4000/Shadowlab
 Effects/Reflection Effects/Rotating Mirror
 Layers/Arrange/Bring to the Top

Step Eleven:

Selections/Select All
 Image/Add Borders/3 pixels/Background Colour
 Effects/3D Effects/Cutout as follows:



Selections/Select all
 Image/Add Borders/50 pixels/White
 Selections/Invert
 Flood fill with Foreground Gradient
 Effects/Reflection Effects/Feedback as follows:

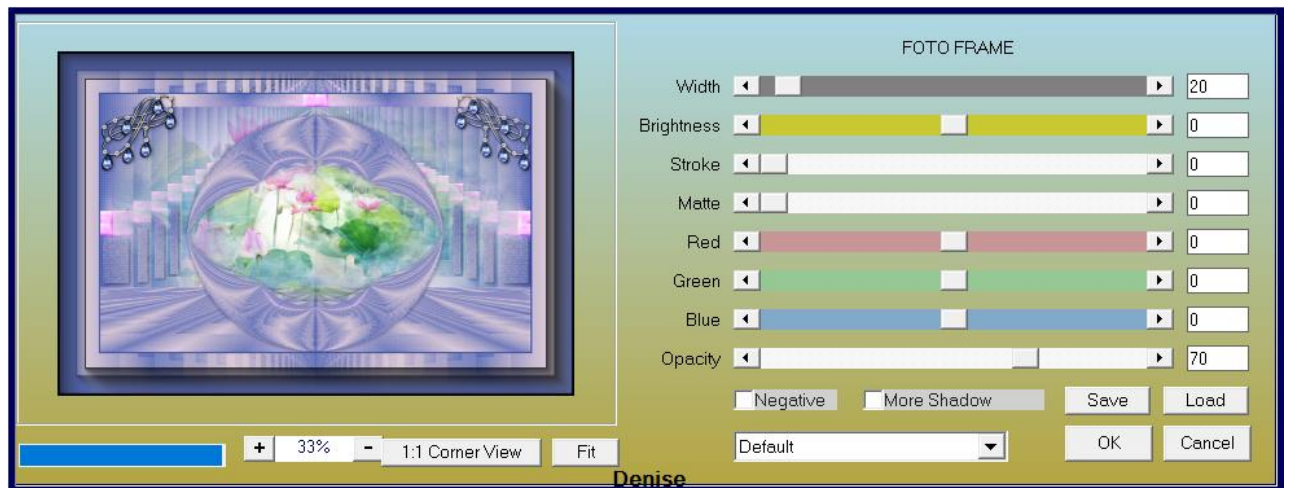


Layers/Duplicate
 Image/Mirror/Vertical

Selections/Select None
Change Blend Mode to Overlay and Opacity to 50%

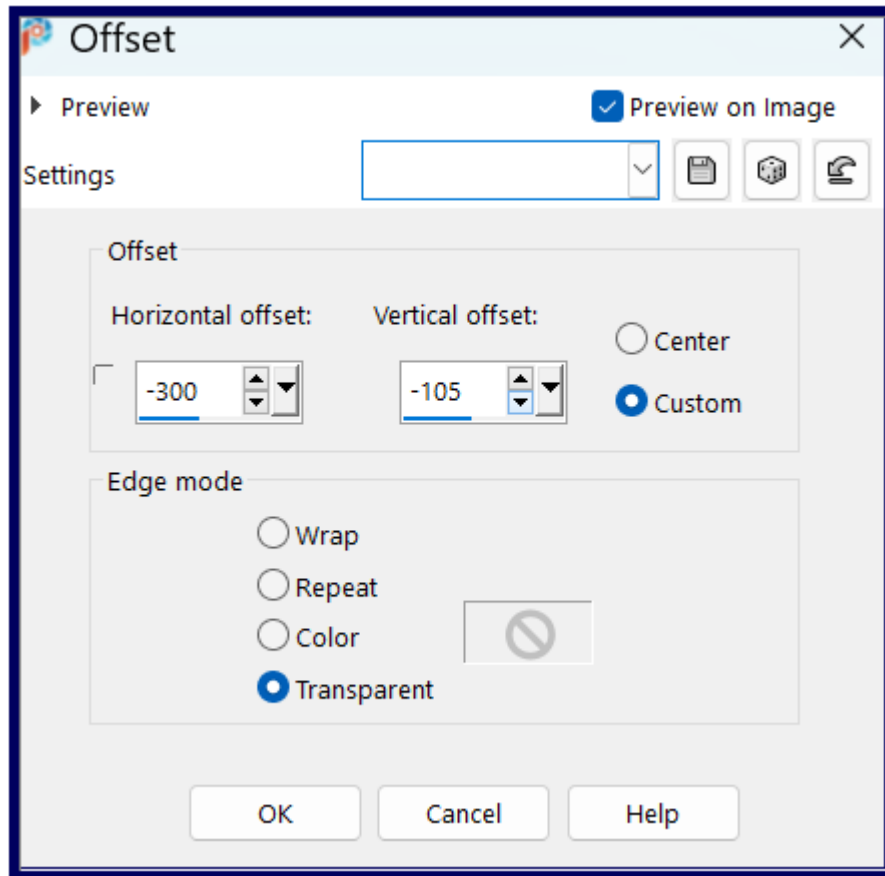
Step Twelve:

Selections/Select All
Image/Add Borders/40 pixels/Background Colour
Selections/Invert
Effects/Plugins/Caroline & Sensibility/CS-LDots
Selections/Select None
Effects/Plugins/AAA Frames/Foto Frame as follows:



Step Thirteen:

Maximise your main image
Edit/Copy Edit/Paste as New Layer
I used the following offset:
Effects/Image Effects/Offset as follows:



Effects/Plugins/Eye Candy 4000/Shadowlab

Step Thirteen:

Selections/Load/Save Selection/Load Selection D.D.Seamless3 from Disk
 Layers/New Raster Layer
 Flood fill with Foreground Gradient
 Effects/Plugins/MuRa's Seamless/Emboss at Alpha/Default Settings
 Selections/Select None
 Effects/Reflection Effects/Rotating Mirror
 Effects/Plugins/Eye Candy 4000/Shadowlab

Step Fourteen:

Maximise Signature.png
 Edit/Copy Edit/Paste as New Layer
 Place at bottom of Layer
 Add your own watermark if you wish
 Layers/Merge/Merge Visible

OPTIONAL STEP:

Effects/Plugins/AAA Filters/Custom Filter/Landscape

Image/Resize/1000 pixels wide - height will adjust itself

File/Export/JPEG Optimiser/Compression Value 20

I hope you have enjoyed this tutorial
A big thank you to the ladies who test my Tutorials

TESTERS' RESULTS



MARIE



BETTY

For other Versions of this Tutorial, please go to:

<http://escapingtopsp2.altervista.org/SeamlessVersions/SeamlessVersions.html>



<https://escapingtopsp2.blogspot.com/>