

This tutorial is written by Denise D. on 10th January, 2024
from my own ideas.

Any resemblance to other tutorials is co-incidental and unintentional.
If you wish to share my Tutorials, you **MUST** obtain my permission first.
All I ask is that you advise me and credit for the tutorial is given to me and
linked to

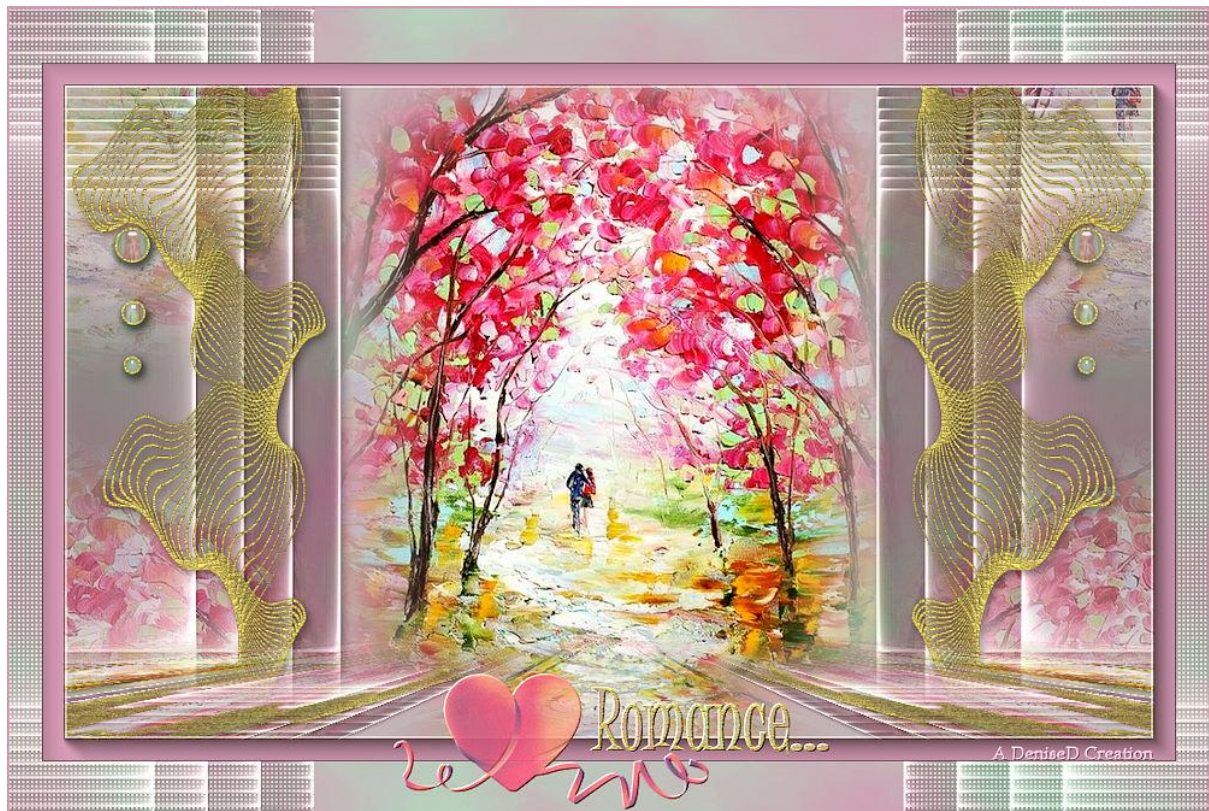
<http://escapingtopsp2.altervista.org/Home/homeb.html>

If you wish to join my mailing list, please go to:

<https://groups.google.com/g/escaping-to-pp3>

Please do not upload any of my completed Tutorial images onto sites
such as Fotki, Pinterest, Photobucket or similar

ROMANCE...



<http://escapingtopsp2.altervista.org/Romance/Romance.html>



Thank you Inge-Lore, Michele B, Vera Mendes and Sylviane. for these
Translations



Click on the Box to download Supplies

Supplies

LD-misted couple.png
You can join this Group at:

<https://groups.yahoo.com/neo/groups/Safe-Haven-Graphics/info>

D.D.Element.png

D.D.Signature.png

Overlay:

prettyju_irresistible_el1.png
You can join this Group at:

<https://chezprettyju.com/>

Selections:

D.D.Romance
D.D.Romance2

Pattern:

GOLD 0.jpg

Plugins:

MuRa's Meister
Eye Candy 4000
AAA Frames
FM Tile Tools
Filters Unlimited 2.0/(AFS IMPORT)

Found here:



AND



Double Click on the icon in your supplies folder to install this Preset in your Plugin.

Notes:

This Tutorial was created in PSP2020

.... **other versions may need adjustment**

Some of the graphics may be from Free to Use sites or Share Groups.

If you are the creator of one of these please let me know so that appropriate credit can be given.

No infringement of copyright is intended or intentional.

Before opening PSP, download plugins and install

Some helpful information:

You can change the blend mode, opacity and drop shadow, as well as colourise the materials, according to the tubes/colours you are using.

When applying the Resize with the All Layers option checked, this will be informed in the tutorial, otherwise, apply the resize with this option unchecked.

Remember always to save your work.

Whenever you reduce an image, apply Adjust/Sharpness/Sharpen, to maintain the sharpness of the image.

Some tools or features have other names in earlier versions of the PSP.

<http://escapingtopsp2.altervista.org/Home/homeb.html>

Vera Mendes	Tools:	Old versions:
	Pick Tool	deformation
	Horizontal Mirror	Mirror
	Vertical Mirror	flip

Please Note: Offset settings provided in this tutorial may vary according to size of your image.
Please adjust to suit.

The settings remain the same throughout this Tutorial unless otherwise stated.

Set your Foreground colour to #cd9bb8

Set your Background colour to #b5cfc2

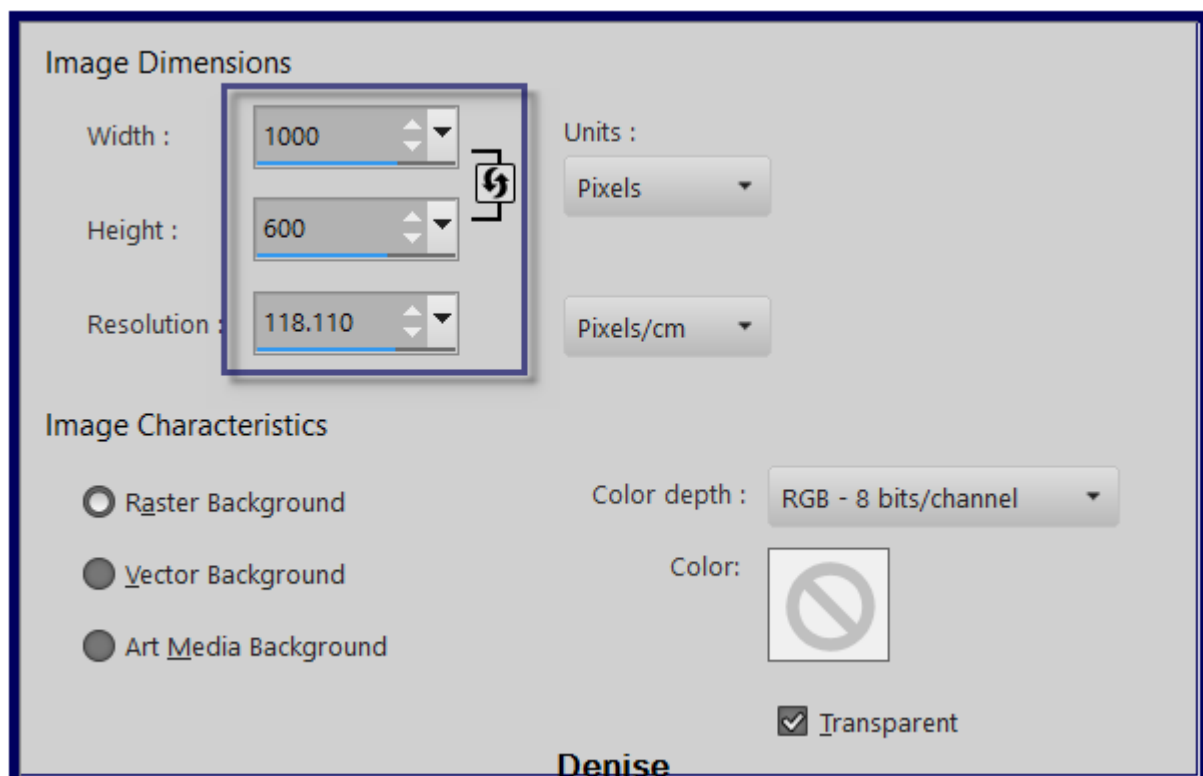
Step One:

Place Texture in PSP Texture Folder

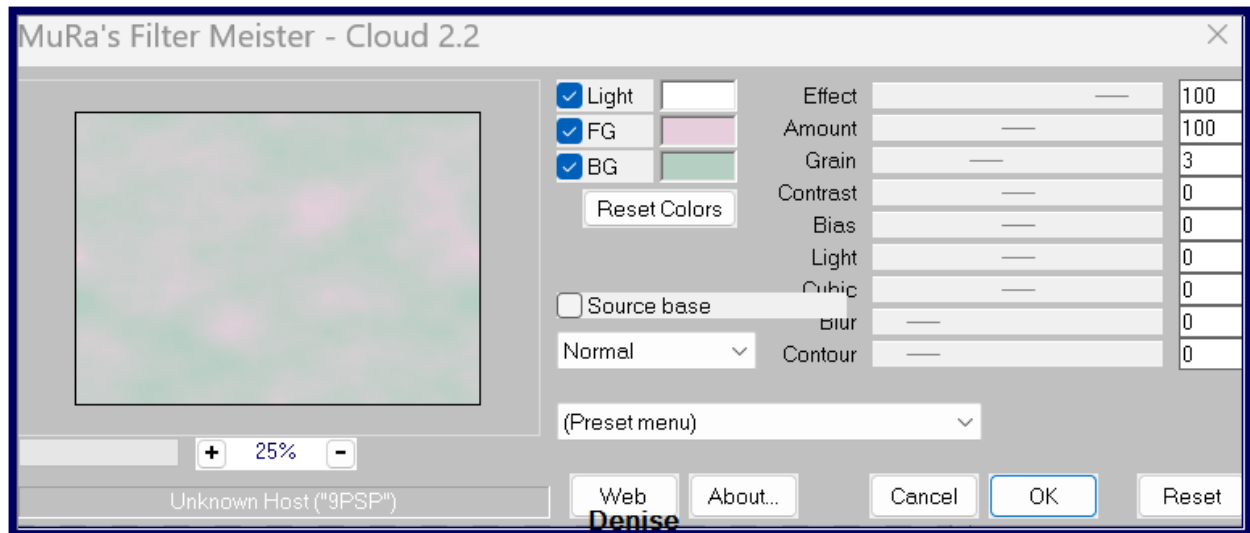
Place Selections in PSP Selection Folder

Open graphics in PSP, duplicate (Shift D) and close the original.

File/New/New Raster Layer 1000 pixels x 600 pixels as follows:



Effects/Plugins/MuRa's Meister/Cloud as follows:



Step Two:

Layers/New Raster Layer

Selections/Select All

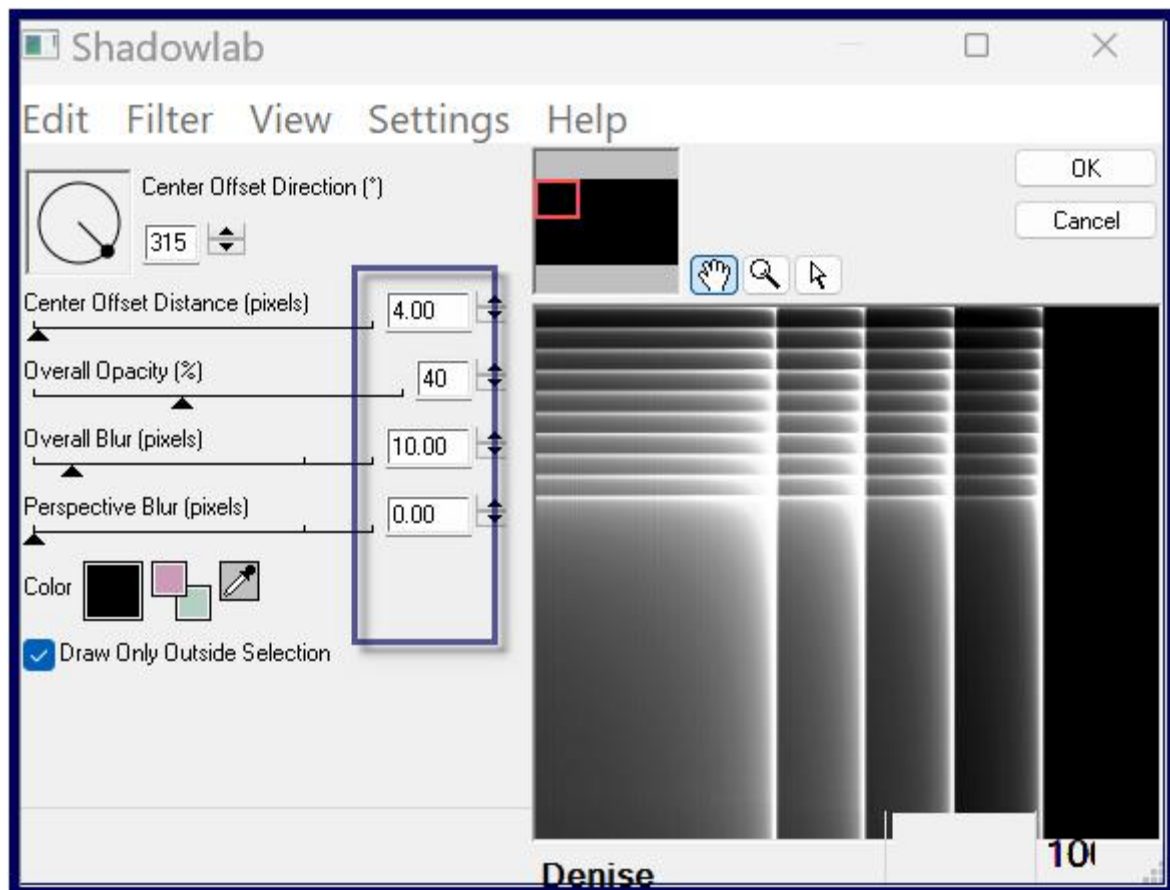
Maximise prettyju_irresistible_el1.png

Edit/Copy Edit/Paste into Selection

Selections/Select None

Change Blend Mode to Luminance Legacy or Blend of your choice

Effects/Plugins/Eye Candy 4000/Shadowlab as follows:



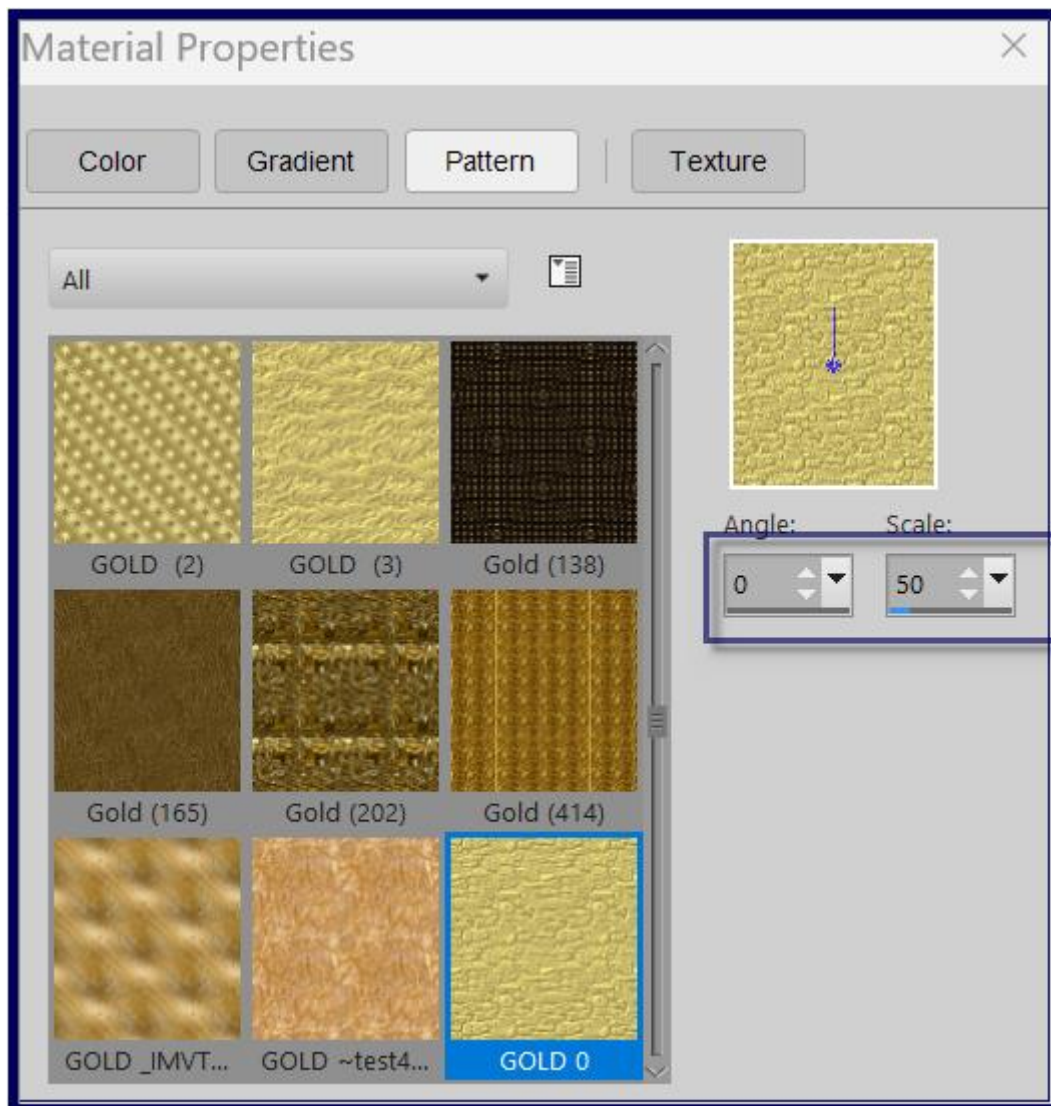
Effects/Plugins/FM Tile Tools/Saturation Emboss

Step Three:

Maximise LD-misted couple.png
 Edit/Copy Edit/Paste as New Layer
 Layers/Arrange/Move Down
 Layers/Duplicate
 Effects/Image Effects/Seamless Tiling/Default Settings
 Layers/Arrange/Bring to Top
 Adjust/Sharpness/Sharpen
 Change Blend Mode to Overlay
 Change Opacity to 50%

Step Four:

Maximise D.D.Element.png
 Edit/Copy Edit/Paste as New Layer
 Objects/Align/Left
 Selections/Select All
 Selections/Float Selections/Defloat
 Change Background Colour to Pattern GOLD O.jpg as follows:



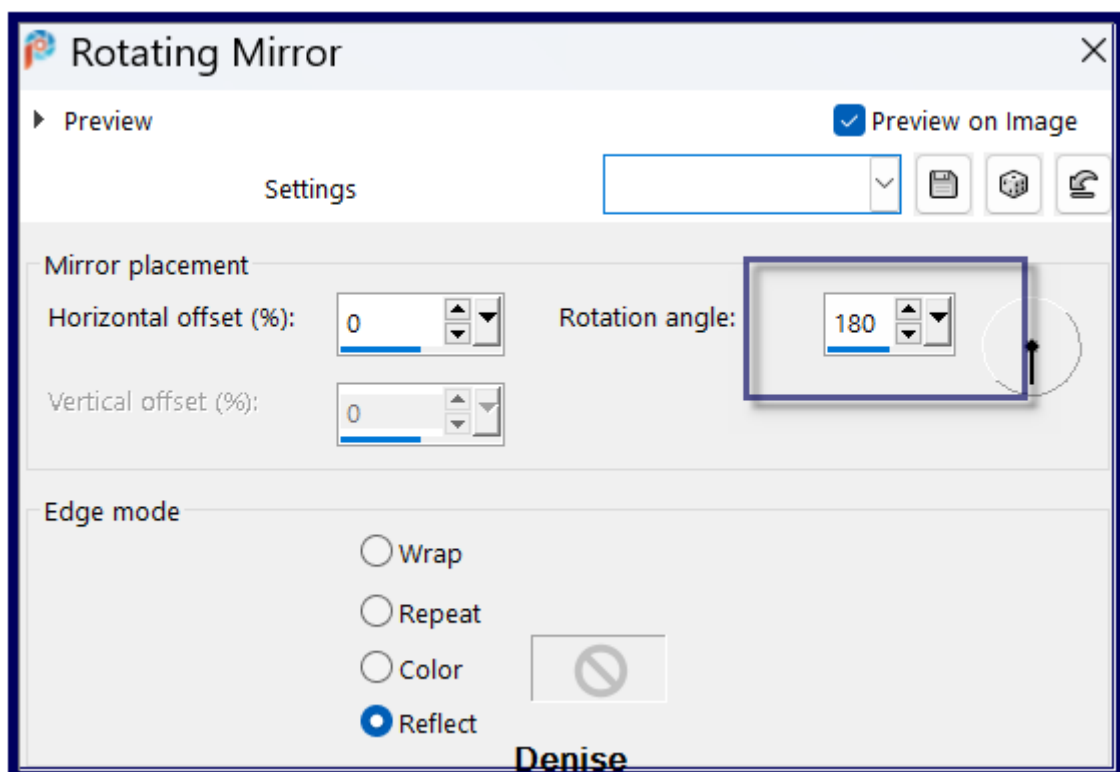
Flood fill with Pattern
 Repeat flood fill twice
 Selections/Select None
 Layers/Duplicate
 Image/Mirror/Horizontal OR Image/Mirror
 Layers/Merge/Merge Down
 Effects/Plugions/Eye Candy 4000/Shadowlab
 Layers/Merge/Merge Visible

Step Five:

Layers/Duplicate
 Effects/Plugins/MuRa's Meister/Perspective Tiling as follows:

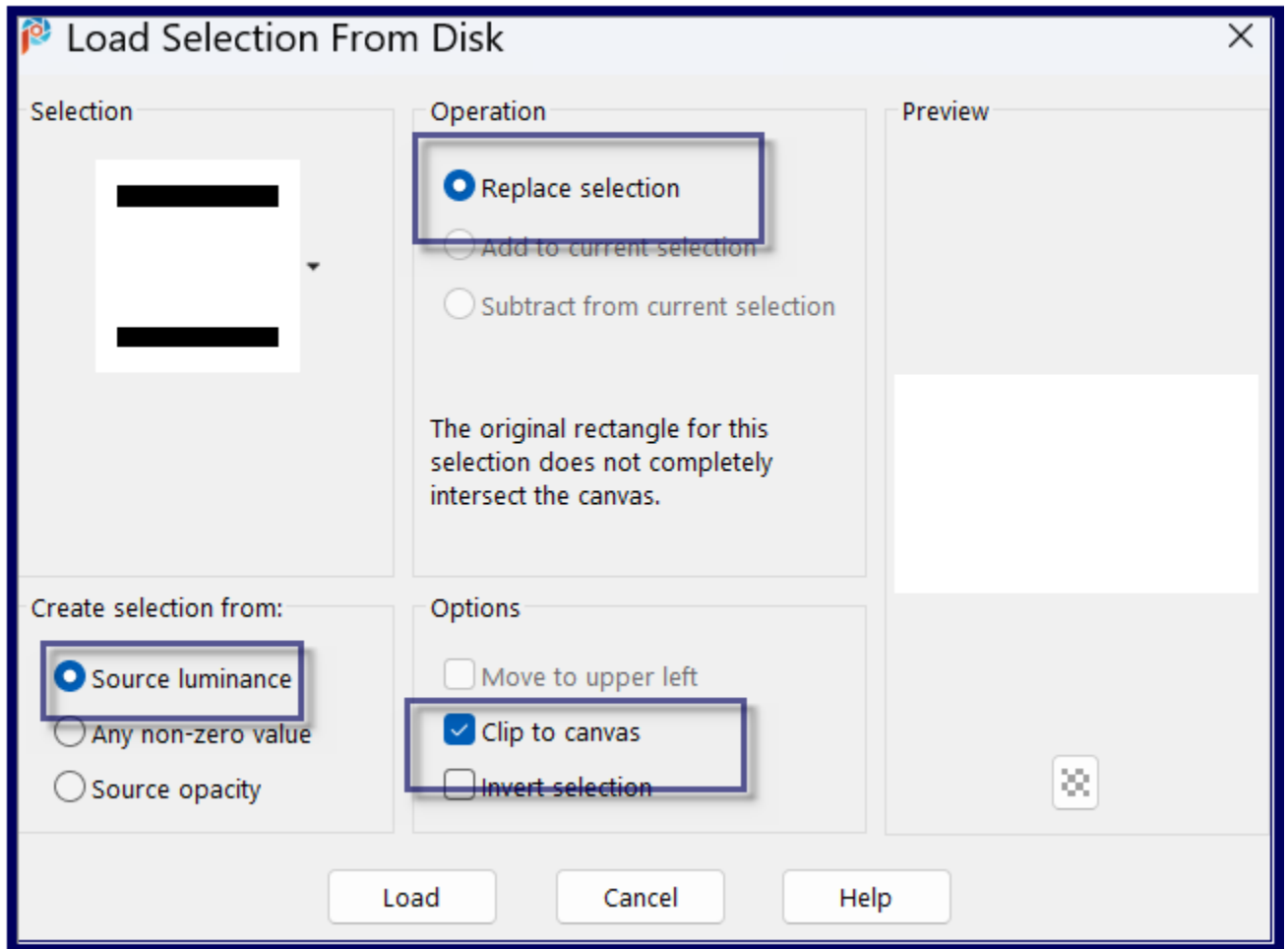


Effects/Reflection Effects/Rotating Mirror as follows



Step Six:

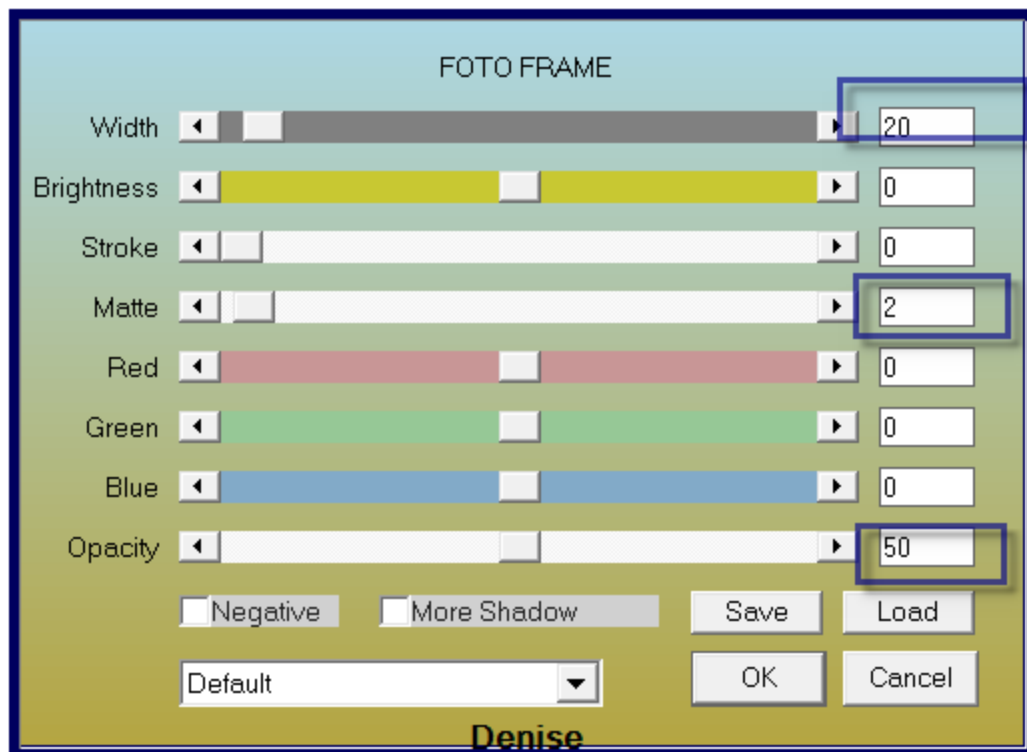
Selections/Load/Save Selection/Load Selection D.D.Romance from Disk as follows:



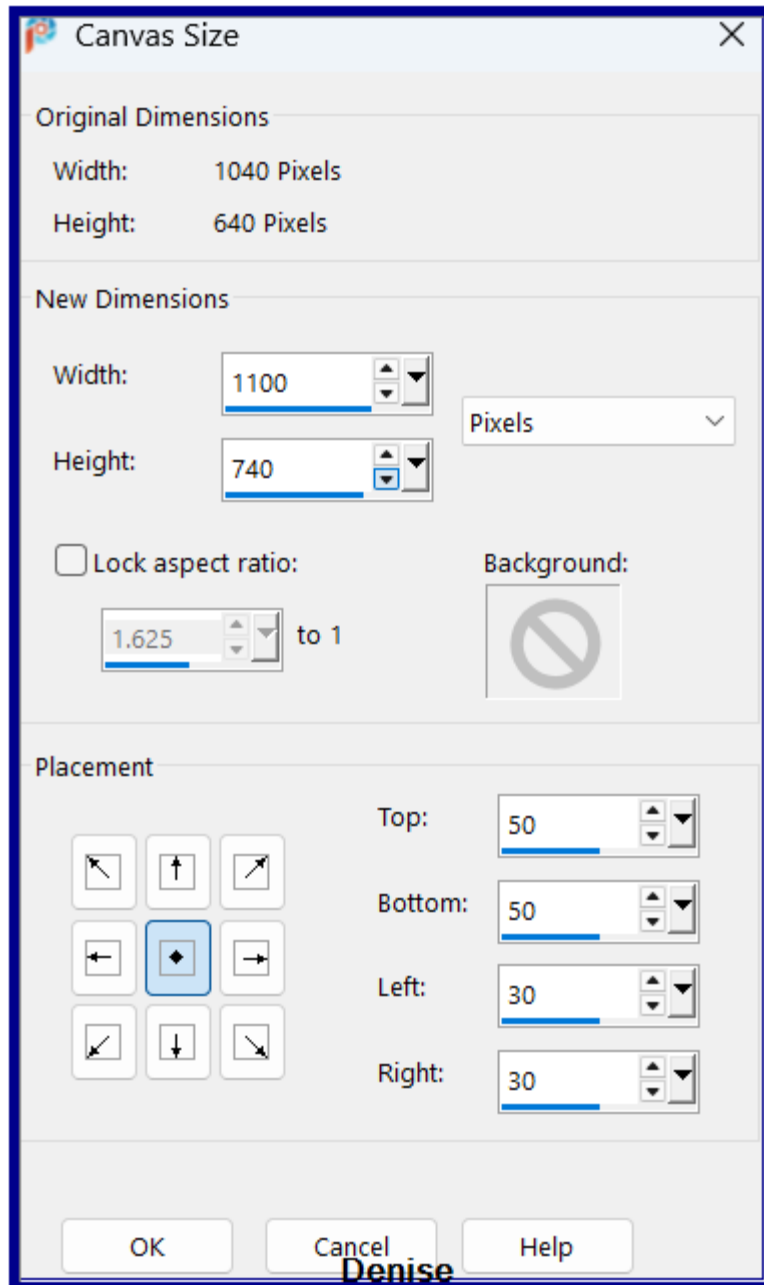
Press the Delete Key 3 times
Selections/Select None

Step Seven:

Layers/Merge/Merge Visible
Edit/Copy Edit/Paste as New Image
Minimise for now
Back to original work
Selections/Select All
Image/Add Borders/20 pixels/Foreground Colour
Selections/Select None
Effects/Plugins/AAA Frames/Foto Frame as follows:



Step Eight:
Promote Background Layer
Image/Canvas Size as follows:



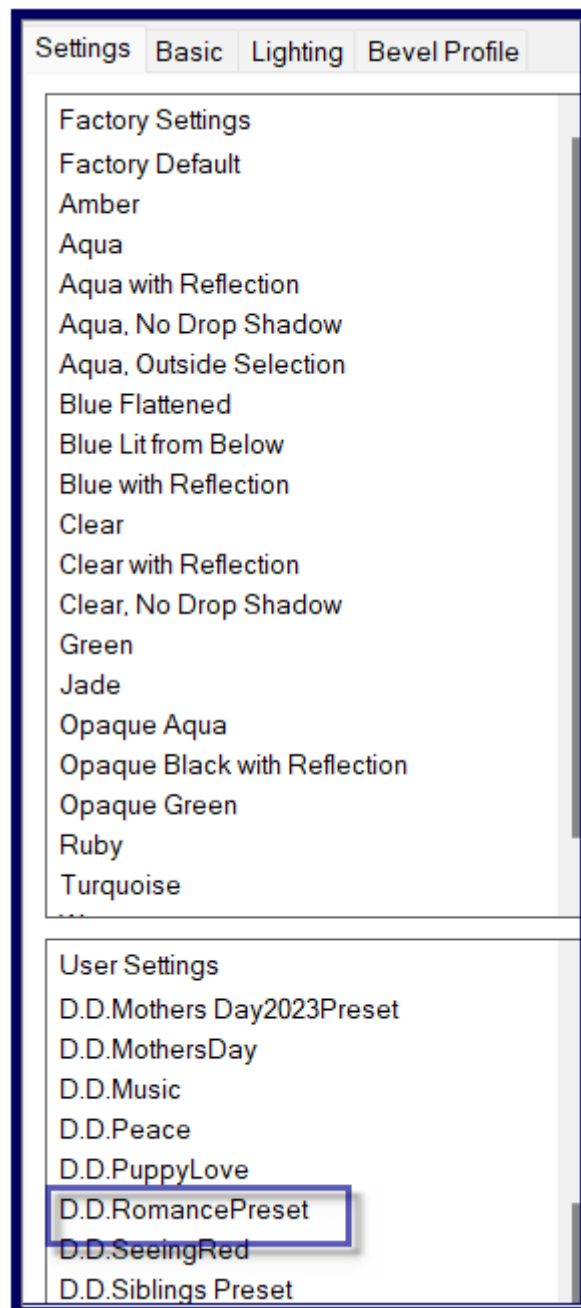
Step Nine:

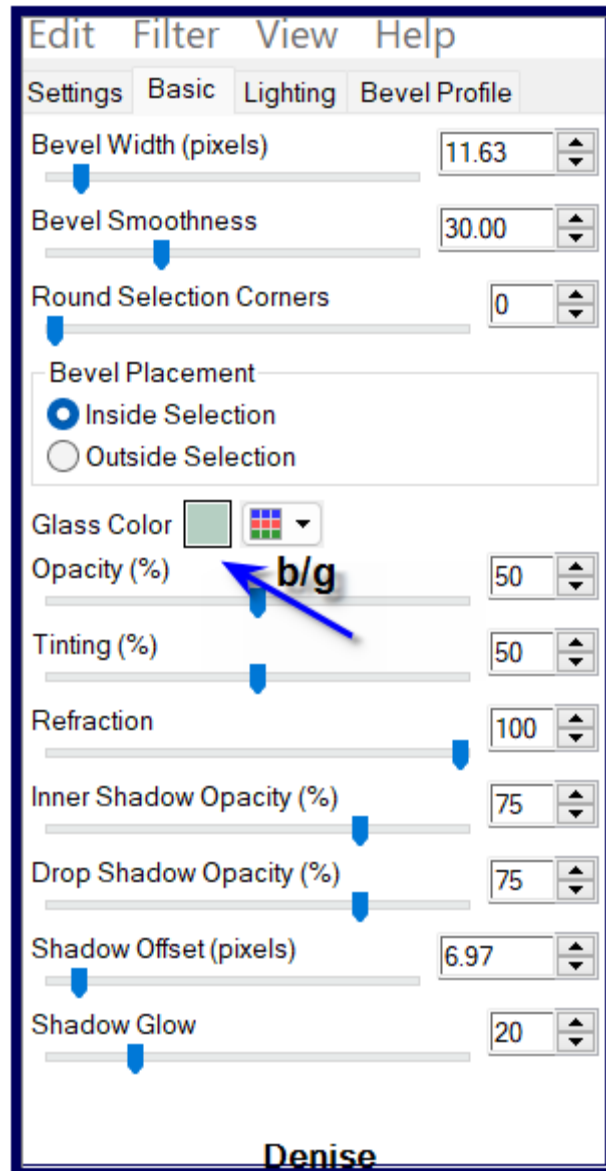
Layers/New Raster Layer
 Layers/Arrange/Move Down
 Effects/Plugins/MuRa's Meister/Cloud
 Layers/New Raster Layer
 Selections/Select All
 Maximise prettyju_irresistible_el1.png
 Edit/Copy Edit/Paste into Selection
 Change Blend Mode to Luminance Legacy or blend of your choice
 Effects/Plugins/FM Tile Tools/Saturation Emboss
 Effects/Plugins/Filters Unlimited 2.0/(AFS IMPORT)/sq border 2/Default
 Settings

Adjust/Sharpness/Sharpen More
Selections/Select None

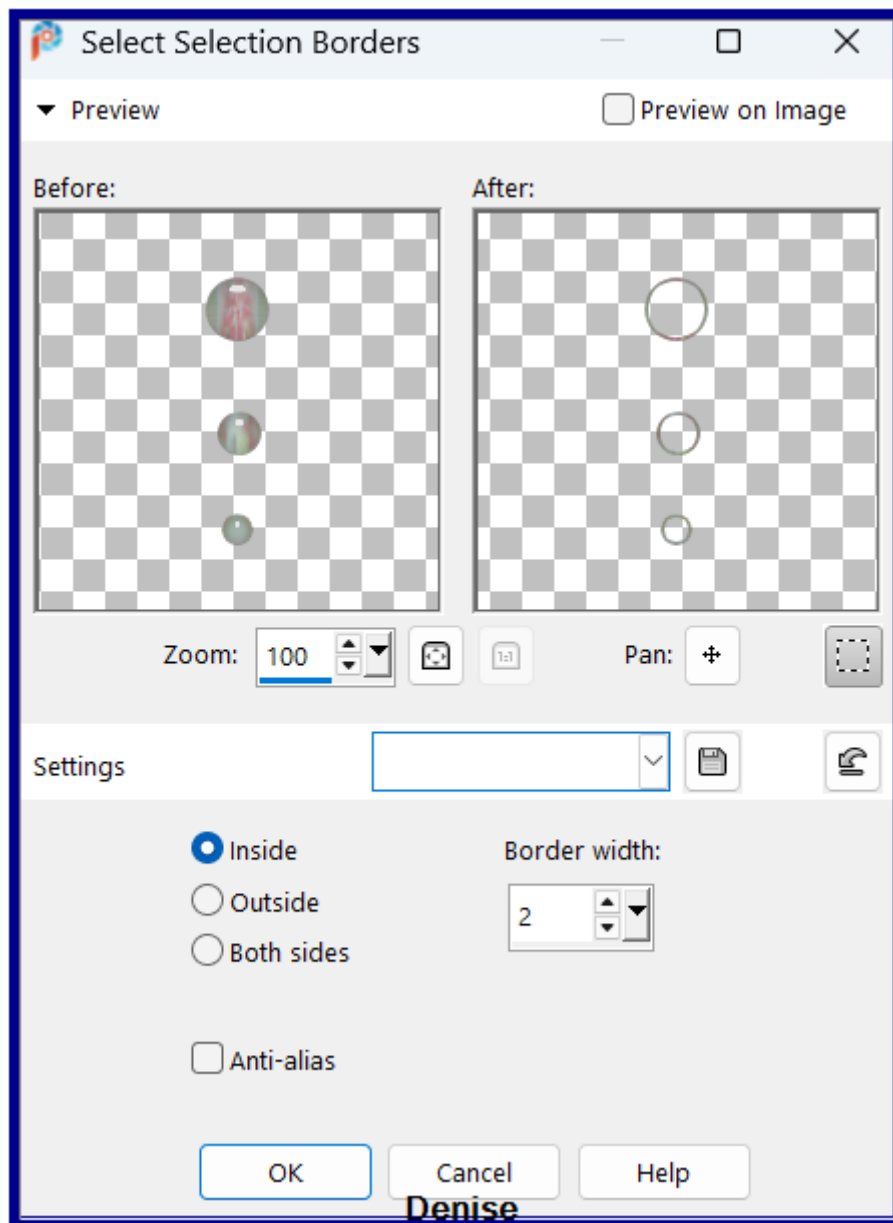
Step Ten:

Layers/New Raster Layer
Layers/Arrange/Bring to Top
Selection/Load/Save Selection/Load Selection D.D.Romance2 from Disk
Maximise Copy made earlier
Edit/Copy Edit/Paste into Selection
Effects/Plugins/Eye Candy 5/Impact/Glass/Preset D.D.RomancePreset OR
as follows:





Effects/Reflection/Rotating Mirror
Selections/Modify/Select Selection Borders as follows:



Flood fill with Background Pattern
 Selections/Select None
 Effects/Plugins/Eye Candy 4000/Shadowlab

Step Eleven:

Maximise D.D.RomanceText.png OR text of your choice
 Edit/Copy Edit/Paste as New Layer
 Objects/Align/Bottom
 Add a Drop Shadow
 Image/Add Borders/2 pixels/Foreground Colour

Step Twelve:

OPTIONAL STEP:

Effects/Plugins/AAA Filters/Custom Filter/Landscape

Maximise Signature.png
Edit/Copy Edit/Paste as New Layer
Place at the bottom of the Layer
Image/Resize/1000 pixels wide - height will adjust itself
File/Export/JPEG Optimiser/Compression Value 20

I hope you have enjoyed this tutorial
A big thank you to the ladies who test my Tutorials

TESTERS' RESULTS



BETTY



BETTY



SJOERTDJE

For other Versions of this Tutorial, please go to:

<http://escapingtopsp2.altervista.org/RomanceVersions/RomanceVersions.html>



<https://escapingtopsp2.blogspot.com/>